

COVID-19 SITUATION REPORT

SITUATION REPORT 126

Friday, 3rd July 2020



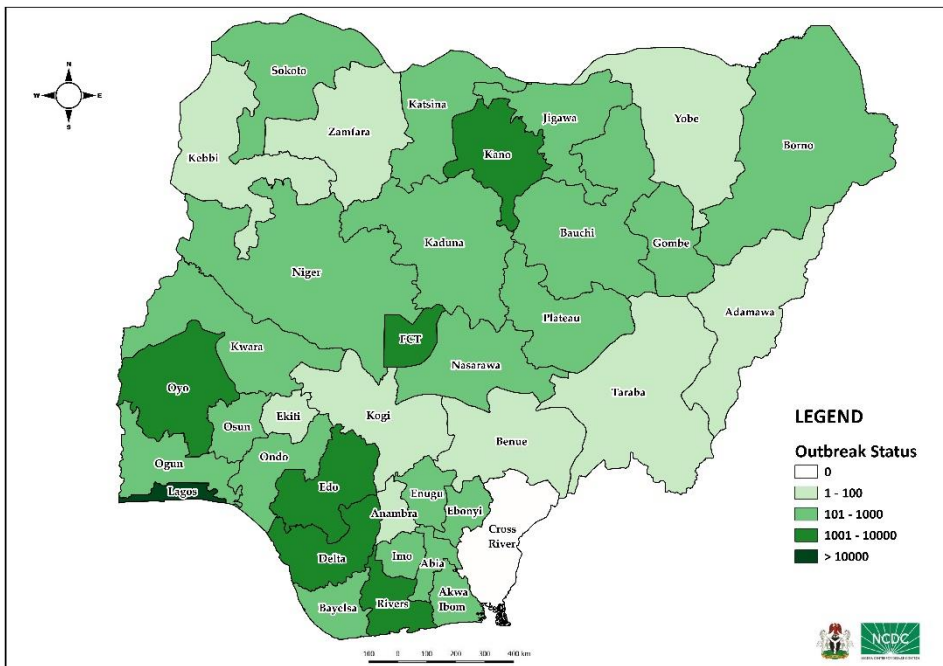
DATA AS REPORTED AND ACCURATE BY NCDC AS AT MIDNIGHT 3rd JULY 2020

HIGHLIGHTS

- Four hundred and fifty-four (**454**) confirmed cases were reported in the last 24 hours from **19** states – Lagos (87), Edo (63), FCT (60), Ondo (41), Benue (32), Abia (31), Ogun (29), Oyo (19), Kaduna (17), Delta (16), Enugu (15), Borno (14), Plateau (9), Nasarawa (8), Kano (5), Bauchi (4), Gombe (2), Katsina (1) and Kogi (1).
- No new state recorded a confirmed COVID-19 case in the last 24 hours. The total number of states including FCT that have reported at least one confirmed case in Nigeria is still 36 (35 states + FCT)
- Two hundred and sixty-eight (**268**) cases were discharged in the last 24 hours in **15** states – Edo (98), Enugu (51), Rivers (27), Kano (26), Delta (20), Osun (11), FCT (9), Bayelsa (4), Gombe (4), Kwara (4), Oyo (4), Borno (3), Kogi (3), Ogun (3) and Bauchi (1).
- Twelve (**12**) deaths were recorded in the last 24 hours in **seven** states – Edo (4), Oyo (2), Plateau (2), Sokoto (1), Kogi (1), Ogun (1) and Rivers (1).

STATE OF THE NATION

Figure 1: Map of Nigeria showing 35 states and FCT affected by COVID-19



SITUATION UPDATES

Total (New in the last 24 hours)

SAMPLES TESTED

148,188 (3,355)

CONFIRMED CASES

27,564 (454)

AFFECTED STATES INCLUDING FCT

36 (0)

DISCHARGED CASES

11,069 (268)

CONFIRMED FATALITIES

628 (12) – 2.3% CFR

DEMOGRAPHICS

MALE – 18,211 (66%)

FEMALE – 9,353 (34%)

MOST AFFECTED AGE GROUP

31 - 40 (25%)

PERSONS OF INTEREST

10,649 (Total)

10,587 (99.4% - Exceeded Follow Up)

PROVENANCE

TRAVEL HISTORY – 456 (2%)

CONTACTS – 6,832 (25%)

UNKNOWN EXPOSURE – 20,276 (73%)

GLOBAL UPDATES

TOTAL NUMBER OF CASES

10,710,005 (517,877 deaths)

COUNTRIES & TERRITORIES AFFECTED*

213

*Excluding the 2 International Conveyances

GENERAL FACT SHEET – DATA AS AT 3rd JULY 2020

Table 1: States with reported laboratory-confirmed COVID-19 cases, recoveries, deaths and days since last reported case

STATES	CONFIRMED CASES		DISCHARGED CASES		DEATHS		TOTAL ACTIVE CASES	DAYS SINCE LAST REPORTED CASE
	CUMULATIVE	NEW	CUMULATIVE	NEW	CUMULATIVE	NEW		
Lagos	10,910	87	1,631	0	132	0	9,147	0
FCT	2,080	60	617	9	35	0	1,428	0
Oyo	1,451	19	707	4	14	2	730	0
Edo	1,266	63	596	98	47	4	623	0
Kano	1,262	5	1,003	26	52	0	207	0
Delta	1,165	16	407	20	25	0	733	0
Rivers	1,114	0	714	27	39	1	361	1
Ogun	927	29	612	3	20	1	295	0
Kaduna	835	17	570	0	12	0	253	0
Katsina	579	1	441	0	23	0	115	0
Bauchi	516	4	467	1	12	0	37	0
Borno	515	14	436	3	33	0	46	0
Gombe	513	2	373	4	19	0	121	0
Ebonyi	438	0	357	0	3	0	78	4
Plateau	402	9	219	0	12	2	171	0
Ondo	394	41	110	0	20	0	264	0
Abia	382	31	207	0	3	0	172	0
Enugu	357	15	215	51	9	0	133	0
Imo	352	0	50	0	6	0	296	2
Jigawa	318	0	308	0	9	0	1	3
Kwara	269	0	146	4	9	0	114	1
Bayelsa	234	0	127	4	15	0	92	2
Nasarawa	221	8	113	0	8	0	100	0
Sokoto	152	0	121	0	16	1	15	1
Osun	148	0	59	11	6	0	83	1
Niger	116	0	45	0	7	0	64	3
Akwa Ibom	104	0	54	0	2	0	48	1
Benue	97	32	30	0	1	0	66	0
Adamawa	89	0	47	0	6	0	36	1
Kebbi	81	0	58	0	7	0	16	2
Zamfara	76	0	71	0	5	0	0	46
Anambra	73	0	57	0	9	0	7	4
Yobe	61	0	48	0	8	0	5	2
Ekiti	43	0	40	0	2	0	1	6
Taraba	19	0	10	0	0	0	9	8
Kogi	5	1	3	3	2	1	0	0
Total	27,564	454	11,069	268	628	12	15,867	

States including FCT are arranged in descending order by number of total confirmed cases

errata

Kogi – Discharged Cases – 3 announced before confirmation in last SitRep

SELECTED CHARTS

Figure 2: Daily Epidemic Curve of Confirmed Cases (WK9 – WK27)

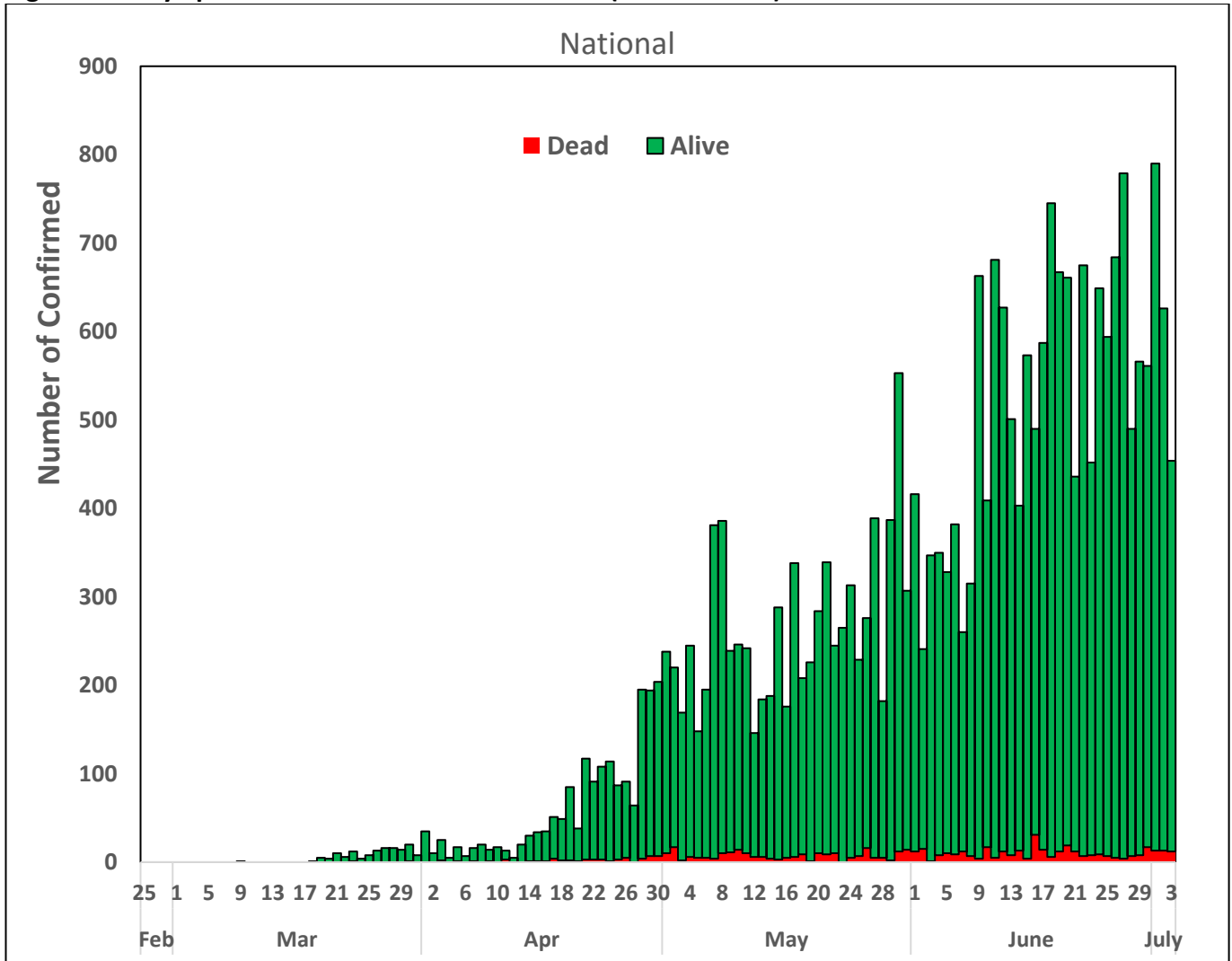
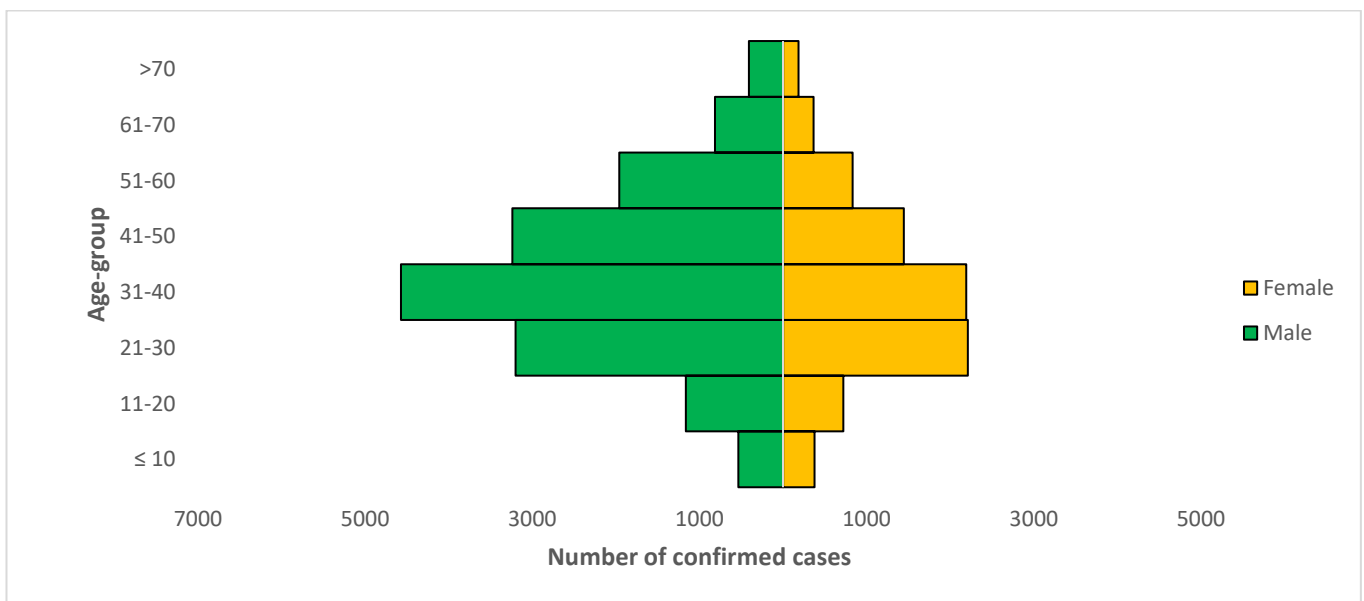


Figure 3: Age-Sex Distribution of Confirmed Cases (WK9 – WK27)



PREPAREDNESS

Since the confirmation of the first case on 27th February 2020, the NCDC has released advisories and statements to help Nigerians and affected groups in particular to respond to the pandemic

- NCDC has released [guidelines on the re-opening of places for worship](#).
- The Nigeria Police Force has released COVID-19 operational guidelines for the [Police and other Law Enforcement Agencies in Nigeria](#)
- NCDC and the Department of Hospital Services (Federal Ministry of Health) have updated the [case management guidelines](#) (version 3) with reviewed changes such as the discharge criteria and medication being used for the treatment of cases
- Guidelines have been issued for the [safe transportation of remains of persons suspected or confirmed to have died of COVID-19](#)
- Information on diagnostics of the COVID-19 virus can be found in our [detailed FAQ document](#).
- To increase our testing capacity, NCDC has issued guidelines for the [integration of private labs](#).
- Guidelines for [businesses and employers](#) have been updated.
- NCDC has updated its [case definition](#) , [community case definition](#) and [case management guide](#).
- NCDC releases periodic [public health advisories](#) to Nigerians on the COVID-19 disease.
- To adhere to post-lockdown measures, NCDC has released an [advisory on the use of face masks](#), as well as information on the [Use of Cloth face masks](#) and [how to make your cloth face masks](#).
- NCDC has released guidelines for the [management of pregnant women and nursing mothers](#) during the pandemic.
- To address burials of loved ones who die from COVID-19, guidelines have been issued to advise on the [management of dead bodies](#).
- For health centres managing cases, the following documents have been released- a guideline for the [Rational Use of Personal Protective Equipment in the care of COVID-19 cases](#).
- As part of plans to increase the testing capacity of the country, the NCDC published a [National Strategy to Scale Up Access to Coronavirus Disease Testing in Nigeria](#) document.
- The Presidential Task Force has published policies and announcements on COVID-19 [available on the website of the Presidency](#) – including presidential addresses, task force updates and information on livelihood and economic support.

RESPONSE

On 28th February 2020, a multi-sectoral Emergency Operations Centre (EOC) was activated at Level 3 – the highest emergency level in Nigeria –led by NCDC in close coordination with the State Public Health EOCs (PHEOC).

- **Deployment of additional Rapid Response Team to Kano to support state COVID-19 response activities**
- **Continued support to states on Incident Action Plan (IAP) prioritisation and implementation**
- **Received a total of 87 Persons of Interest/returnees from Sudan and all were issued COVID-19 test appointments at the airport in Abuja**
- **Optimised and activated two GeneXpert laboratories in Abia and Kwara States**
- **Assessed and supported the supervision of setting up triage points and holding areas in Health facilities in Afijio Local Government Area (LGA) of Oyo State**
- **Trained 150 health care workers in Niger State**
- **Ongoing supply of Personal Protective Equipment (PPE) and commodities across Laboratory networks in the country**
- **Development of a new distribution chart for states, treatment centres and federal hospitals across the country**
- **Conducted a coordination meeting with stateholders to align activities and optimise resources for grassroot risk communication activities**
- **Ongoing implementation of data quality improvement plans including development of wireframes for state/national level dashboards**

- Received a total of 149 returnees/Persons of Interest (POIs), males were 115 (77.2%) and female 34 (22.8%) from Kenya in FCT
- Distributed travellers' kits, guidelines and POIs/returnees were issued COVID-19 test appointments at the airport
- Participated in the first phase of External Quality Assurance (EQA) assessment for the first six COVID-19 testing labs across the country
- All education materials can be found via www.covid19.ncdc.gov.ng