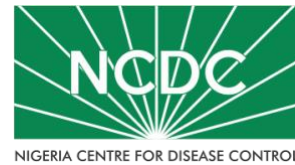


COVID-19 SITUATION REPORT

SITUATION REPORT 138

Wednesday, 15th July 2020



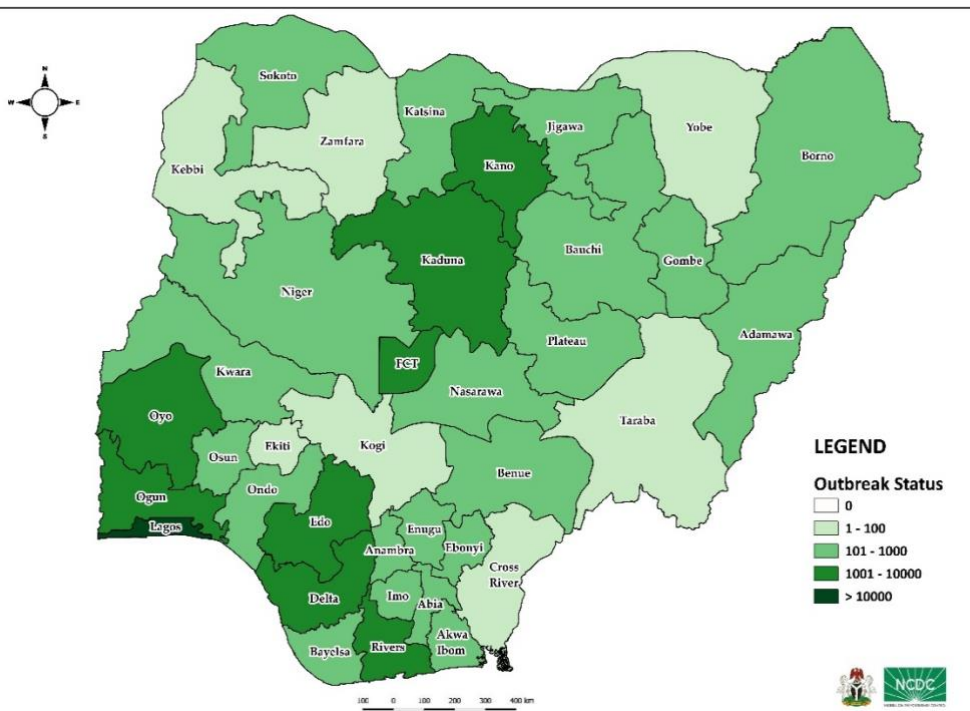
DATA AS REPORTED AND ACCURATE BY NCDC AS AT MIDNIGHT 15th JULY 2020

HIGHLIGHTS

- Six hundred and forty-three (**643**) confirmed cases were reported in the last 24 hours from **19** states - Lagos (230), Oyo (69), FCT (51), Edo (43), Osun (35), Ebonyi (30), Rivers (30), Kaduna (28), Ogun (27), Ondo (23), Plateau (20), Benue (17), Enugu (16), Imo (10), Delta (6), Kano (4), Nasarawa (2), Ekiti (1) and Kebbi (1).
- Two hundred and seven (**207**) cases were discharged in the last 24 hours in **12** states – Edo (60), Gombe (30), Ebonyi (24), Kaduna (20), Ogun (20), Lagos (13), FCT (11), Bayelsa (10), Benue (7), Rivers (6), Imo (4) and Delta (2).
- **Six (6)** deaths were recorded in the last 24 hours in **five** states – Ebonyi (2), Delta (1), Imo (1), Osun (1) and Rivers (1).
- All **36** states in Nigeria, and the FCT, have reported a confirmed case.

STATE OF THE NATION

Figure 1: Map of Nigeria showing 36 states and FCT affected by COVID-19



SITUATION UPDATES

Total (New in the last 24 hours)

SAMPLES TESTED

202,097 (3081)

CONFIRMED CASES

34,259 (643)

AFFECTED STATES INCLUDING FCT

37

DISCHARGED CASES

13,999 (207)

CONFIRMED FATALITIES

760 (6) – 2.2% CFR

DEMOGRAPHICS

MALE – 22,237 (65%)

FEMALE – 12,022 (35%)

MOST AFFECTED AGE GROUP

31 - 40 (25%)

PERSONS OF INTEREST

10,987 (Total)

10,881 (99% - Exceeded Follow Up)

PROVENANCE

TRAVEL HISTORY – 593 (2%)

CONTACTS – 8,586 (25%)

UNKNOWN EXPOSURE – 25,080 (73%)

GLOBAL UPDATES

TOTAL NUMBER OF CASES

12,964,809 (570,288 deaths)

COUNTRIES & TERRITORIES AFFECTED*

213

*Excluding the 2 International Conveyances

GENERAL FACT SHEET – DATA AS AT 15th JULY 2020

Table 1: States with reported laboratory-confirmed COVID-19 cases, recoveries, deaths, number of samples tested and days since last reported case

STATES	CONFIRMED CASES		DISCHARGED CASES		DEATHS		TOTAL ACTIVE CASES	DAYS SINCE LAST REPORTED CASE
	CUMULATIVE	NEW	CUMULATIVE	NEW	CUMULATIVE	NEW		
Lagos	12,941	230	1,948	13	175	0	10,818	0
FCT	2,738	51	821	11	39	0	1,878	0
Oyo	1,951	69	1,008	0	19	0	924	0
Edo	1,850	43	1,099	60	60	0	691	0
Rivers	1,427	30	952	6	47	1	428	0
Delta	1,398	6	585	2	35	1	778	0
Kano	1,318	4	1,035	0	52	0	231	0
Ogun	1,132	27	765	20	22	0	345	0
Kaduna	1,067	28	680	20	12	0	375	0
Ondo	770	23	138	0	21	0	611	0
Katsina	669	0	441	0	23	0	205	3
Ebonyi	646	30	532	24	8	2	106	0
Borno	593	0	464	0	35	0	94	1
Plateau	591	20	260	0	16	0	315	0
Gombe	533	0	455	30	22	0	56	2
Enugu	531	16	322	0	16	0	193	0
Bauchi	521	0	505	0	13	0	3	3
Kwara	422	0	179	0	14	0	229	1
Abia	413	0	295	0	3	0	115	1
Imo	409	10	77	4	9	1	323	0
Jigawa	321	0	308	0	11	0	2	5
Bayelsa	318	0	163	10	18	0	137	1
Osun	311	35	84	0	9	1	218	0
Nasarawa	254	2	113	0	8	0	133	0
Sokoto	153	0	136	0	16	0	1	11
Akwa Ibom	145	0	83	0	3	0	59	3
Niger	145	0	108	0	7	0	30	3
Benue	143	17	42	7	6	0	95	0
Adamawa	110	0	83	0	7	0	20	4
Anambra	101	0	65	0	9	0	27	2
Kebbi	88	1	74	0	7	0	7	0
Zamfara	76	0	71	0	5	0	0	58
Ekiti	67	1	40	0	2	0	25	0
Yobe	62	0	51	0	8	0	3	6
Taraba	30	0	11	0	0	0	19	2
Cross River	10	0	3	0	1	0	6	2
Kogi	5	0	3	0	2	0	0	12
Total	34,259	643	13,999	207	760	6	19,500	

States, including FCT, are arranged in descending order by number of total confirmed cases and then alphabetical order

SELECTED CHARTS

Figure 2: Daily Epidemic Curve of Confirmed Cases (WK9 – WK29)

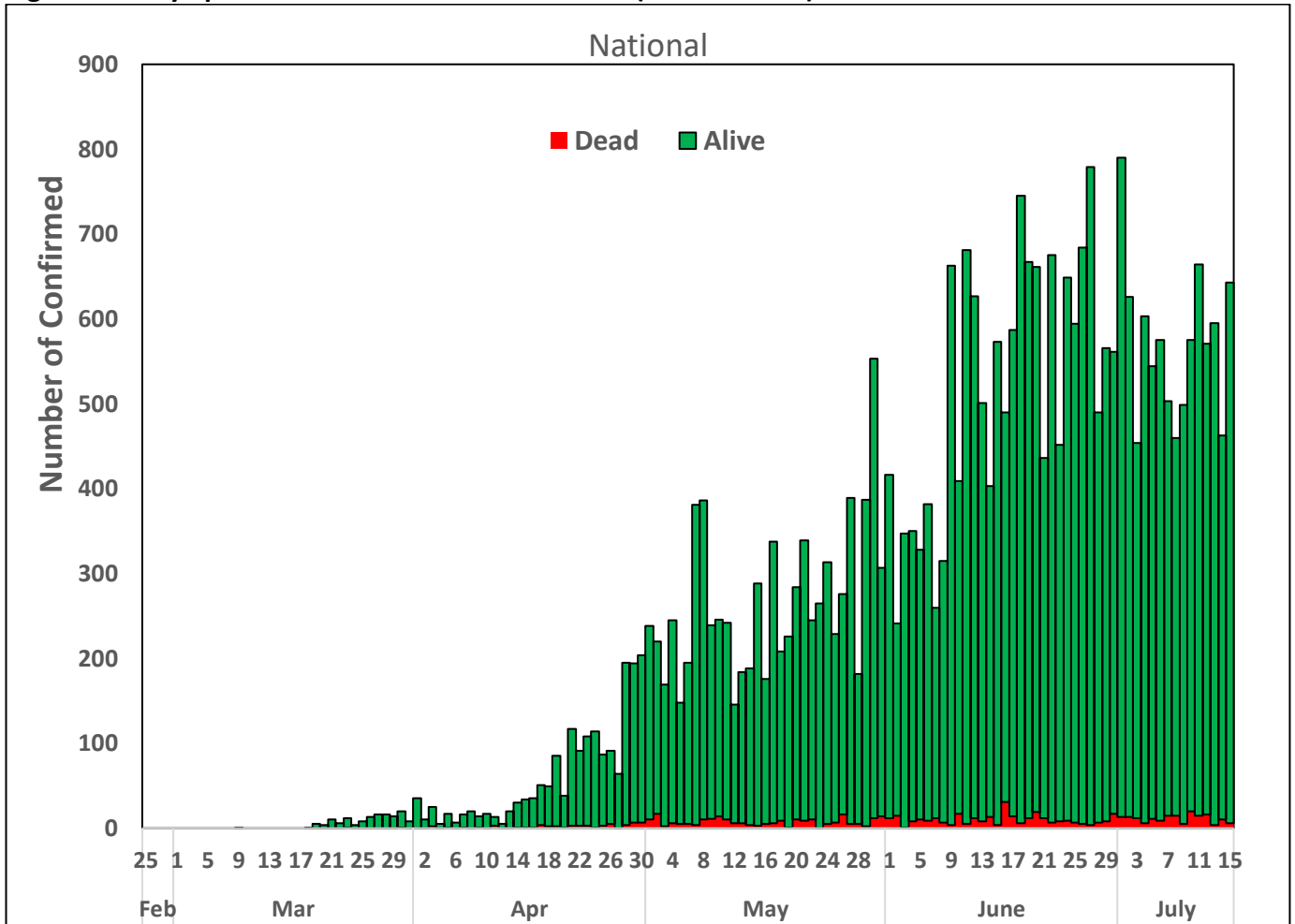
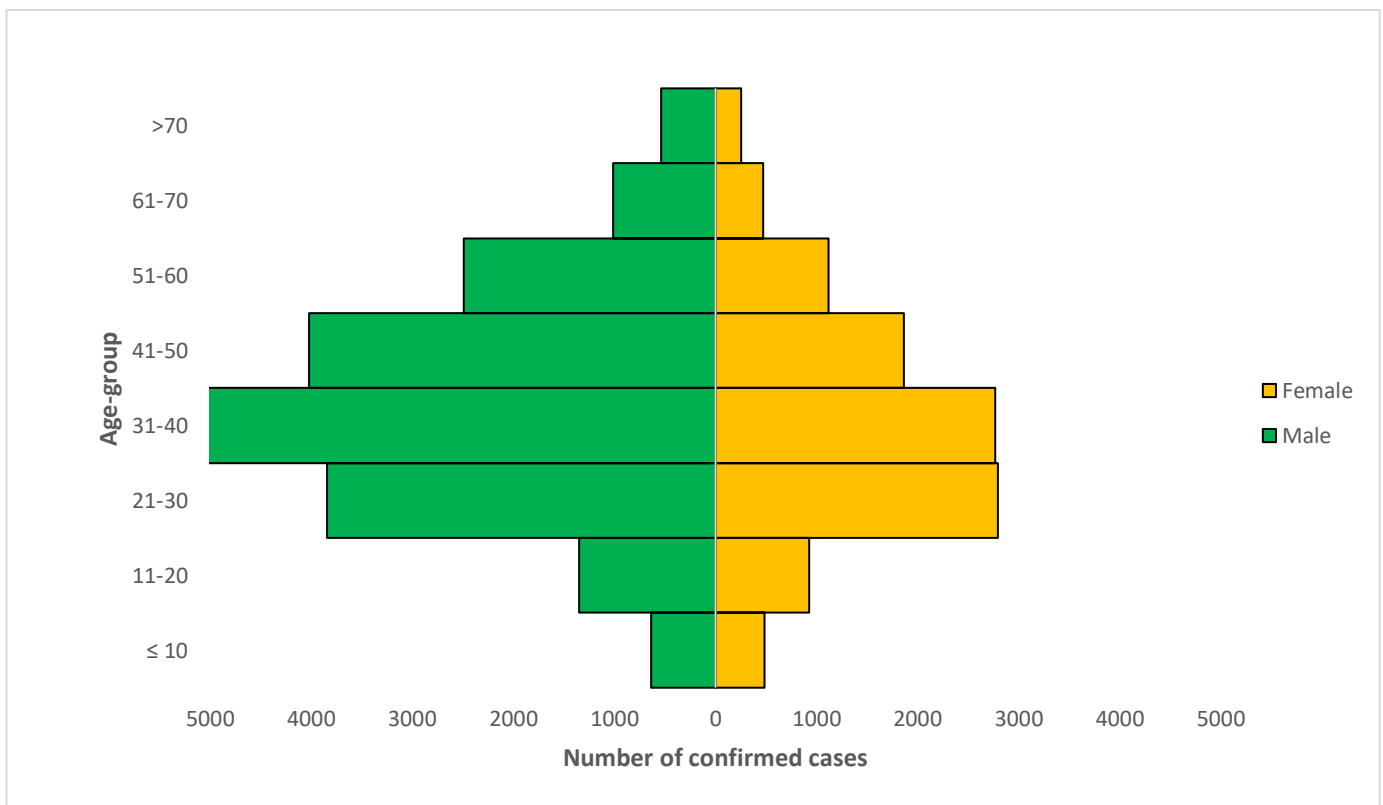


Figure 3: Age-Sex Distribution of Confirmed Cases (WK9 – WK29)



PREPAREDNESS

Since the confirmation of the first case on 27th February 2020, the NCDC has released advisories and statements to help Nigerians and affected groups in particular to respond to the pandemic

- NCDC has launched an online course on [Infection, Prevention and Control \(IPC\) for COVID-19](#) NCDC eLearning platform
- Ahead of forthcoming elections in the country, NCDC has issued [Guidelines for Conducting Elections During the COVID-19 Outbreak in Nigeria](#).
- To protect our elders, and those with pre-existing medical conditions, NCDC has issued an [Advisory for Vulnerable Groups](#).
- NCDC has released [guidelines on the re-opening of places for worship](#).
- The Nigeria Police Force has released COVID-19 operational guidelines for the [Police and other Law Enforcement Agencies in Nigeria](#)
- NCDC and the Department of Hospital Services (Federal Ministry of Health) have updated the [case management guidelines](#) (version 3) with reviewed changes such as the discharge criteria and medication being used for the treatment of cases
- Guidelines have been issued for the [safe transportation of remains of persons suspected or confirmed to have died of COVID-19](#)
- Information on diagnostics of the COVID-19 virus can be found in our [detailed FAQ document](#).
- To increase our testing capacity, NCDC has issued guidelines for the [integration of private labs](#).
- Guidelines for [businesses and employers](#) have been updated.
- NCDC has updated its [case definition](#) , [community case definition](#) and [case management guide](#).
- NCDC releases periodic [public health advisories](#) to Nigerians on the COVID-19 disease.
- To adhere to post-lockdown measures, NCDC has released an [advisory on the use of face masks](#), as well as information on the [Use of Cloth face masks](#) and [how to make your cloth face masks](#).
- NCDC has released guidelines for the [management of pregnant women and nursing mothers](#) during the pandemic.
- To address burials of loved ones who die from COVID-19, guidelines have been issued to advise on the [management of dead bodies](#).
- For health centres managing cases, the following documents have been released- a guideline for the [Rational Use of Personal Protective Equipment in the care of COVID-19 cases](#).
- As part of plans to increase the testing capacity of the country, the NCDC published a [National Strategy to Scale Up Access to Coronavirus Disease Testing in Nigeria](#) document.
- The Presidential Task Force has published policies and announcements on COVID-19 [available on the website of the Presidency](#) – including presidential addresses, task force updates and information on livelihood and economic support.

RESPONSE

On 28th February 2020, a multi-sectoral Emergency Operations Centre (EOC) was activated at Level 3 – the highest emergency level in Nigeria –led by NCDC in close coordination with the State Public Health EOCs (PHEOC).

- **Deployed Rapid Response Team to Cross River**
- **Received a total of 552 persons of Interest (POIs)/returnees from United Arab Emirates (300), UK (235) and Italy (17)**
- **All POIs/returnees were received, screened and given the travellers kit on arrival at the Nnamdi Azikiwe International Airport Abuja (NAIA). All returns were issued COVID-19 test appointment**
- **Received donation of response supplies from the Nigerian Association of Pharmacists and Pharmaceutical Scientists in the Americas, Inc(NAPPSA)**
- Supported the activation of Maitama District Hospital sample collection site in the FCT
- Finalised training materials and agenda for states' Training of Trainers (TOTs) for contact tracing and active case search
- Conducted training of Healthcare Workers on IPC in Akwa Ibom and Kebbi States

- Deployed response materials and commodities to Cross River State Ministry of Health
- Deployed Personal Protective Equipment (PPE) and commodities to the Point of Entry (POE) facilities at all the entry sites across the country
- Finalised protocols to capture study on clinical audit of management of COVID-19 cases in nine additional states
- Supported Universal Basic Education Commission (UBEC) to develop handbook for COVID- 19 prevention in schools
- All education materials can be found via www.covid19.ncdc.gov.ng