

COVID-19 SITUATION REPORT

SITUATION REPORT 160

Thursday, 6th August 2020



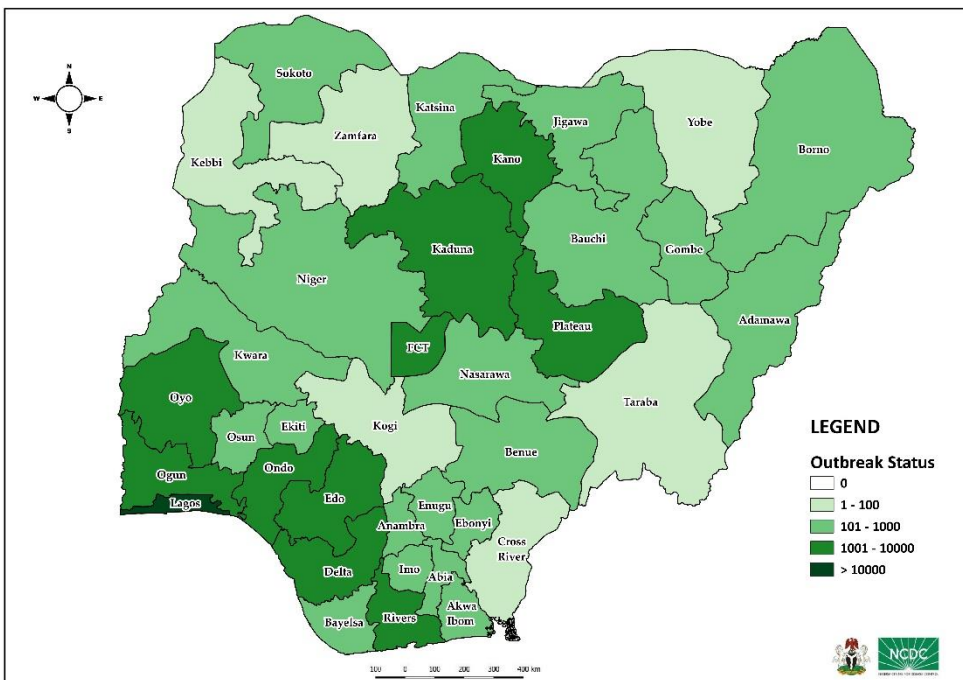
DATA AS REPORTED AND ACCURATE BY NCDC AS AT MIDNIGHT 6th AUGUST 2020

HIGHLIGHTS

- Three hundred and fifty-four (**354**) confirmed cases were reported in the last 24 hours from **17** states – FCT (78), Lagos (76), Kaduna (23), Ebonyi (19), Oyo (18), Nasarawa (17), Rivers (17), Delta (16), Kwara (15), Akwa Ibom (13), Edo (12), Ogun (12), Plateau (11), Kano (9), Bauchi (6), Borno (6) and Ekiti (6).
- Two hundred and sixty-five (**265**) cases were discharged in the last 24 hours in **12** states – Rivers (64), Delta (45), Kaduna (38), Akwa Ibom (21), Edo (26), FCT (21), Kano (16), Lagos (13), Cross River (9), Ogun (7), Yobe (3) and Ekiti (2).
- Three (**3**) deaths were recorded in the last 24 hours in **three** states – Akwa Ibom (1), Imo (1) and Oyo (1).
- All **36** states in Nigeria, and the FCT, have reported a confirmed case.

STATE OF THE NATION

Figure 1: Map of Nigeria showing 36 states and FCT affected by COVID-19



SITUATION UPDATES

Total (New in the last 24 hours)

SAMPLES TESTED

310,729 (3,835)

CONFIRMED CASES

45,244 (354)

AFFECTED STATES INCLUDING FCT

37

DISCHARGED CASES

32,430 (265)

CONFIRMED FATALITIES

930 (3) – 2.1% CFR

DEMOGRAPHICS

MALE – 29,231 (65%)

FEMALE – 16,013 (35%)

MOST AFFECTED AGE GROUP

31 - 40 (25%)

PERSONS OF INTEREST

11,241 (Total)

11,127 (99% - Exceeded Follow Up)

PROVENANCE

TRAVEL HISTORY – 847 (2%)

CONTACTS – 11,203 (25%)

UNKNOWN EXPOSURE – 33,194 (73%)

GLOBAL UPDATES

TOTAL NUMBER OF CASES

18,614,177 (702,642 deaths)

COUNTRIES & TERRITORIES AFFECTED*

214

*Excluding the 2 International Conveyance

GENERAL FACT SHEET – DATA AS AT 6th AUGUST 2020

Table 1: States with reported laboratory-confirmed COVID-19 cases, recoveries, deaths and days since last reported case

STATES	CONFIRMED CASES		DISCHARGED CASES		DEATHS		TOTAL ACTIVE CASES	DAYS SINCE LAST REPORTED CASE
	TOTAL	NEW	TOTAL	NEW	TOTAL	NEW		
Lagos	15,627	76	13,119	13	192	0	2,316	0
FCT	4,241	78	1,231	21	45	0	2,965	0
Oyo	2,825	18	1,402	0	31	1	1,392	0
Edo	2,340	12	2,073	26	93	0	174	0
Rivers	1,911	17	1,591	64	53	0	267	0
Kano	1,608	9	1,291	16	53	0	264	0
Delta	1,557	16	1,404	45	43	0	110	0
Kaduna	1,530	23	1,335	38	12	0	183	0
Ogun	1,428	12	1,204	7	24	0	200	0
Plateau	1,294	11	598	0	20	0	676	0
Ondo	1,243	0	651	0	27	0	565	2
Enugu	880	0	485	0	18	0	377	1
Ebonyi	838	19	793	0	26	0	19	0
Kwara	815	15	342	0	21	0	452	0
Katsina	746	0	457	0	24	0	265	3
Borno	634	6	569	0	35	0	30	0
Abia	625	0	517	0	5	0	103	1
Gombe	620	0	529	0	23	0	68	3
Osun	586	0	300	0	13	0	273	1
Bauchi	574	6	521	0	13	0	40	0
Imo	472	0	147	0	10	1	315	1
Nasarawa	360	17	223	0	8	0	129	0
Benue	356	0	64	0	7	0	285	4
Bayelsa	342	0	290	0	21	0	31	2
Jigawa	322	0	308	0	11	0	3	21
Akwa Ibom	234	13	171	21	8	1	55	0
Niger	226	0	133	0	12	0	81	2
Adamawa	176	0	85	0	11	0	80	2
Ekiti	159	6	76	2	2	0	81	0
Sokoto	154	0	137	0	16	0	1	12
Anambra	142	0	83	0	18	0	41	1
Kebbi	90	0	82	0	8	0	0	16
Zamfara	77	0	71	0	5	0	1	19
Taraba	72	0	55	0	4	0	13	2
Cross River	68	0	33	9	8	0	27	1
Yobe	67	0	57	3	8	0	2	7
Kogi	5	0	3	0	2	0	0	34
Total	45,244	354	32,430	265	930	3	11,884	

States, including FCT, are arranged in descending order by number of total confirmed cases and then alphabetical order

SELECTED CHARTS

Figure 2: Daily Epidemic Curve of Confirmed Cases (WK9 – WK32)

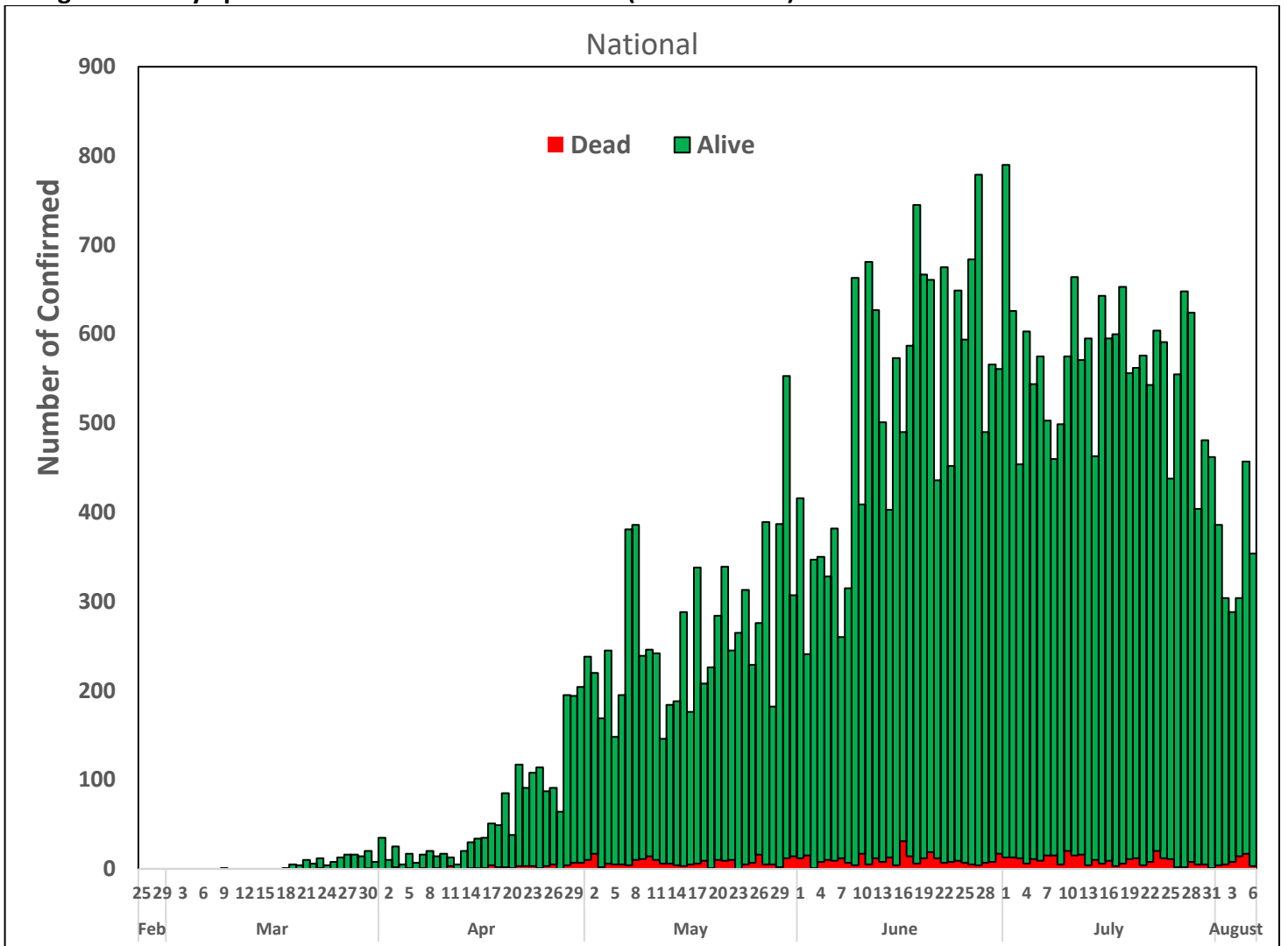
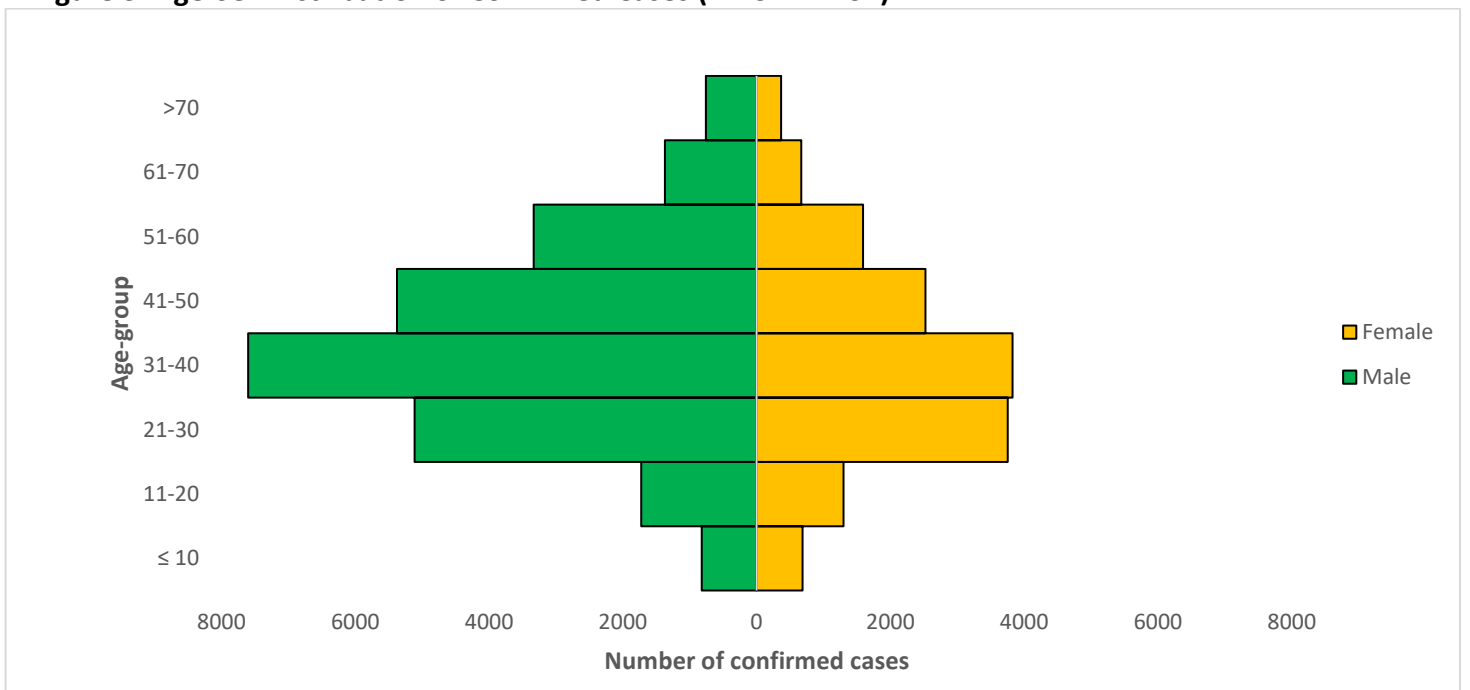


Figure 3: Age-Sex Distribution of Confirmed Cases (WK9 – WK32)



PREPAREDNESS

Since the confirmation of the first case on 27th February 2020, the NCDC has released advisories and statements to help Nigerians and affected groups in particular to respond to the pandemic

- NCDC has launched an online course on [Infection, Prevention and Control \(IPC\) for COVID-19](#) NCDC eLearning platform
- Ahead of forthcoming elections in the country, NCDC has issued [Guidelines for Conducting Elections During the COVID-19 Outbreak in Nigeria](#).
- To protect our elders, and those with pre-existing medical conditions, NCDC has issued an [Advisory for Vulnerable Groups](#).
- NCDC has released [guidelines on the re-opening of places for worship](#).
- NCDC has released [Strategies to Improve Surveillance for COVID-19 Guidance for States](#)
- The Nigeria Police Force has released COVID-19 operational guidelines for the [Police and other Law Enforcement Agencies in Nigeria](#)
- Guidelines have been issued for the [safe transportation of remains of persons suspected or confirmed to have died of COVID-19](#)
- Information on diagnostics of the COVID-19 virus can be found in our [detailed FAQ document](#).
- To increase our testing capacity, NCDC has issued guidelines for the [integration of private labs](#).
- Guidelines for [businesses and employers](#) have been updated.
- NCDC has updated its [case definition](#) , [community case definition](#) and [case management guide](#).
- NCDC releases periodic [public health advisories](#) to Nigerians on the COVID-19 disease.
- To adhere to post-lockdown measures, NCDC has released an [advisory on the use of face masks](#), as well as information on the [Use of Cloth face masks](#) and [how to make your cloth face masks](#).
- NCDC has released guidelines for the [management of pregnant women and nursing mothers](#) during the pandemic.
- To address burials of loved ones who die from COVID-19, guidelines have been issued to advise on the [management of dead bodies](#).
- For health centres managing cases, the following documents have been released- a guideline for the [Rational Use of Personal Protective Equipment in the care of COVID-19 cases](#).
- As part of plans to increase the testing capacity of the country, the NCDC published a [National Strategy to Scale Up Access to Coronavirus Disease Testing in Nigeria](#) document.
- The Presidential Task Force has published policies and announcements on COVID-19 [available on the website of the Presidency](#) – including presidential addresses, task force updates and information on livelihood and economic support.

RESPONSE

On 28th February 2020, a multi-sectoral Emergency Operations Centre (EOC) was activated at Level 3 – the highest emergency level in Nigeria –led by NCDC in close coordination with the State Public Health EOCs (PHEOC).

- **Conducted a strategic meeting with data/Surveillance and Outbreak Response Management Analysis System (SORMAS) team on developing and determining short term plan to improve data quality**
- **Ongoing optimisation of GeneXpert laboratory in Zamfara State**
- **Completed the National Training of Trainers (TOT) for case managers from Federal Tertiary Hospitals and Institutions supporting the COVID-19 outbreak response in the North East and North Central States**
- **Daily engagement of Infection Prevention and Control (IPC) focal persons at state and facility level**
- **Developed and shared Terms of Reference and Healthcare Associated Infection (HAI) prevention strategy with state IPC teams**
- **Disseminated weekly priority messages with stakeholders for further dissemination**
- **Deployed additional Personal Protective Equipment (PPE), sample collection materials and commodities to FCT sample collection Centres**
- **Finalised plans to commence distribution to the laboratory network across the country**

- Engaged with development partners for the training and deployment of Network of People living with HIV and AIDS in Nigeria (NEPWHAN) members to support COVID-19 surveillance activities in 30 Local Government Areas in 15 states
- Commenced National Training of Trainers (TOT) for case managers from Federal Teaching Hospital and Institutions supporting the COVID-19 outbreak response in the North East and North Central States
- Trained Principals, Heads of private and public secondary schools on Infection Prevention and Control (IPC) in preparation for school reopening
- Disseminated Information, Education and Communication (IEC) materials to Kogi, Cross River and States
- Deployed Personal Protective Equipment (PPE), response materials and commodities to the Laboratory Network in Bayelsa, Taraba, Nasarawa, Zamfara and Gombe
- All education materials can be found via www.covid19.ncdc.gov.ng