

COVID-19 SITUATION REPORT

SITUATION REPORT 91

Friday, 29th May 2020



DATA AS REPORTED AND ACCURATE BY NCDC by Midnight 29th May 2020

HIGHLIGHTS

- Three hundred and eighty-seven (**387**) confirmed cases were reported in the last 24 hours in fourteen (**14**) states – Lagos (254), FCT (29), Jigawa (24), Edo (22), Oyo (15), Rivers (14), Kaduna (11), Borno (6), Kano (3), Bauchi (2), Gombe (2), Plateau (2), Yobe (2) and Ondo (1).
- No new state recorded a confirmed COVID-19 case in the last 24 hours. The total number of states including FCT that have reported at least one confirmed case in Nigeria is still **36** (35 states + FCT).
- One hundred and five (**105**) cases were discharged in the last 24 hours in twelve (**12**) states – Kano (53), Kaduna (9), Imo (7), Oyo (7), Plateau (5), Rivers (5), Zamfara (5), Enugu (4), FCT (4), Bauchi (3), Borno (2) and Ondo (1).
- Two (**2**) deaths were recorded in the last 24 hours in two (**2**) states – Adamawa (1) and Kaduna (1)

SITUATION UPDATES

Total (New in the last 24 hours)

SAMPLES TESTED

60825 (2099)

CONFIRMED CASES

9302 (387)

AFFECTED STATES INCLUDING FCT

36 (0)

DISCHARGED CASES

2697 (105)

CONFIRMED FATALITIES

261 (2) – 3% CFR

DEMOGRAPHICS

MALE – 6282 (**68%**)

FEMALE – 3020 (**32%**)

MOST AFFECTED AGE GROUP

31 - 40 (**24%**)

PERSONS OF INTEREST

10023 (Total)

9,930 (99.1% - Exceeded Follow Up)

PROVENANCE

TRAVEL HISTORY – **210 (2%)**

CONTACTS – **2150 (23%)**

UNKNOWN EXPOSURE – **6942 (75%)**

GLOBAL UPDATES

TOTAL NUMBER OF CASES

5, 701, 337 (357, 688 deaths)

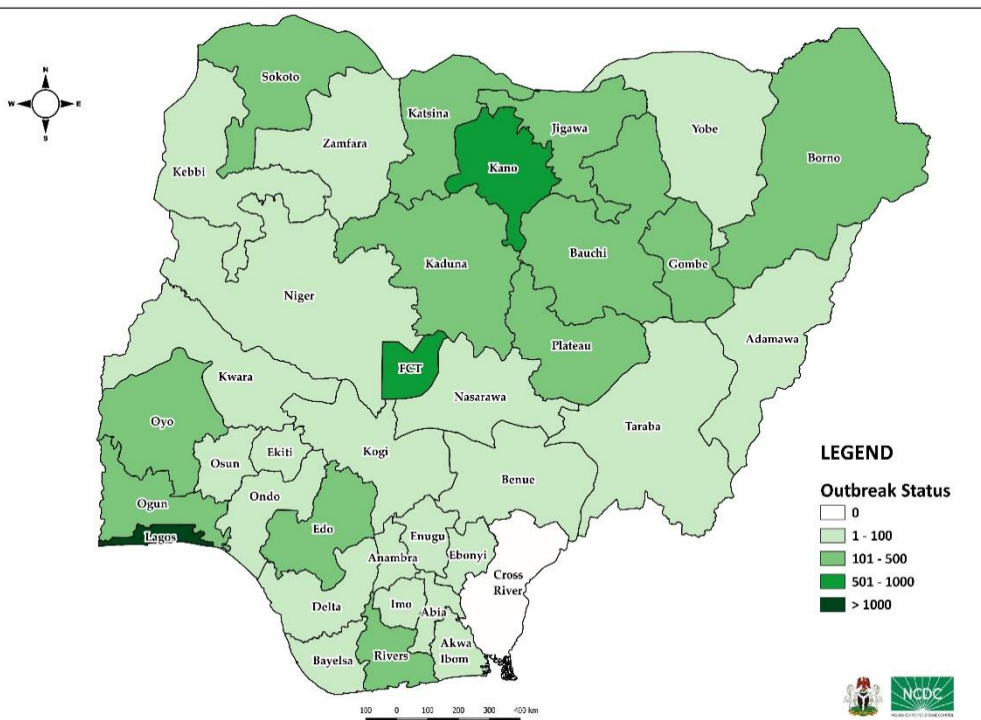
COUNTRIES & TERRITORIES AFFECTED*

213

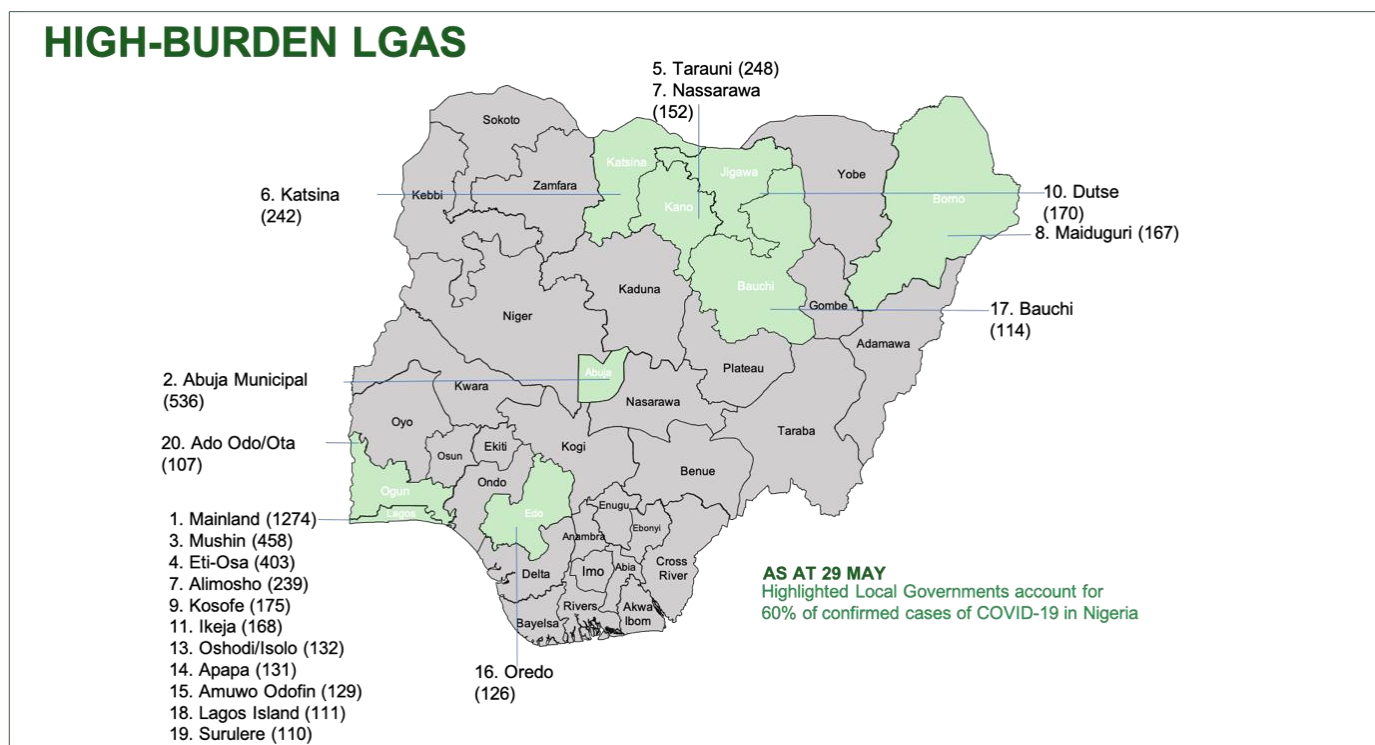
*Excluding the 2 International Conveynances

STATE OF THE NATION

Figure 1: Map of Nigeria showing 35 states and FCT affected by COVID-19



SUBJECT IN FOCUS: LOCAL GOVERNMENTS WITH HIGH CONFIRMED CASES



Throughout the response, information has been provided on the breakdown of the confirmed cases in the country by states. However, in keeping with a data-driven response, information on the most affected LGAs will be reported.

Data has shown that twenty (20) Local Government Areas (LGAs) account for 60% of the confirmed COVID-19 cases in Nigeria, mostly in metropolitan areas.

Eight (8) states and FCT account for these 20 LGAs in the country, namely Lagos, Kano, Katsina, Jigawa, Bauchi, Borno, Edo, Ogun and the FCT.

GENERAL FACT SHEET – DATA AS AT MAY 29th 2020

Table 1: States with reported laboratory-confirmed COVID-19 cases, recoveries, deaths and days since last reported case

STATES	CONFIRMED CASES		DISCHARGED CASES		DEATHS		TOTAL ACTIVE CASES	DAYS SINCE LAST REPORTED CASE
	CUMULATIVE	NEW	CUMULATIVE	NEW	CUMULATIVE	NEW		
Lagos	4377	254	745	0	47	0	3585	0
Kano	942	3	192	53	41	0	709	0
FCT	564	29	162	4	14	0	388	0
Katsina	358	0	51	0	14	0	293	2
Oyo	275	15	95	7	6	0	174	0
Jigawa	265	24	78	0	4	0	183	0
Borno	264	6	162	2	25	0	77	0
Edo	262	22	69	0	13	0	180	0
Ogun	246	0	128	0	9	0	109	1
Bauchi	236	2	208	3	7	0	21	0
Kaduna	232	11	147	9	7	1	78	0
Rivers	190	14	48	5	12	0	130	0
Gombe	156	2	119	0	3	0	34	0
Sokoto	116	0	93	0	14	0	9	7
Plateau	101	2	52	5	2	0	47	0
Kwara	87	0	37	0	1	0	49	1
Zamfara	76	0	71	5	5	0	0	11
Nasarawa	62	0	18	0	2	0	42	2
Delta	57	0	14	0	7	0	36	1
Yobe	49	2	8	0	7	0	34	0
Akwa Ibom	45	0	14	0	2	0	29	1
Osun	44	0	35	0	4	0	5	4
Ebonyi	40	0	8	0	0	0	32	1
Adamawa	38	0	20	0	4	1	14	2
Imo	34	0	14	7	0	0	20	2
Kebbi	33	0	29	0	4	0	0	1
Niger	30	0	9	0	1	0	20	2
Ondo	25	1	20	1	2	0	3	0
Ekiti	20	0	16	0	2	0	2	9
Enugu	18	0	12	4	0	0	6	6
Taraba	18	0	10	0	0	0	8	9
Bayelsa	12	0	6	0	1	0	5	4
Anambra	11	0	3	0	1	0	7	2
Abia	10	0	3	0	0	0	7	2
Benue	7	0	1	0	0	0	6	2
Kogi	2	0	0	0	0	0	2	2
TOTAL	9302	387	2697	105	261	2	6344	

States including FCT are arranged in descending order by number of total confirmed cases

SELECTED CHARTS

Figure 2: Daily Epidemic Curve of Confirmed Cases (WK9 – WK22)

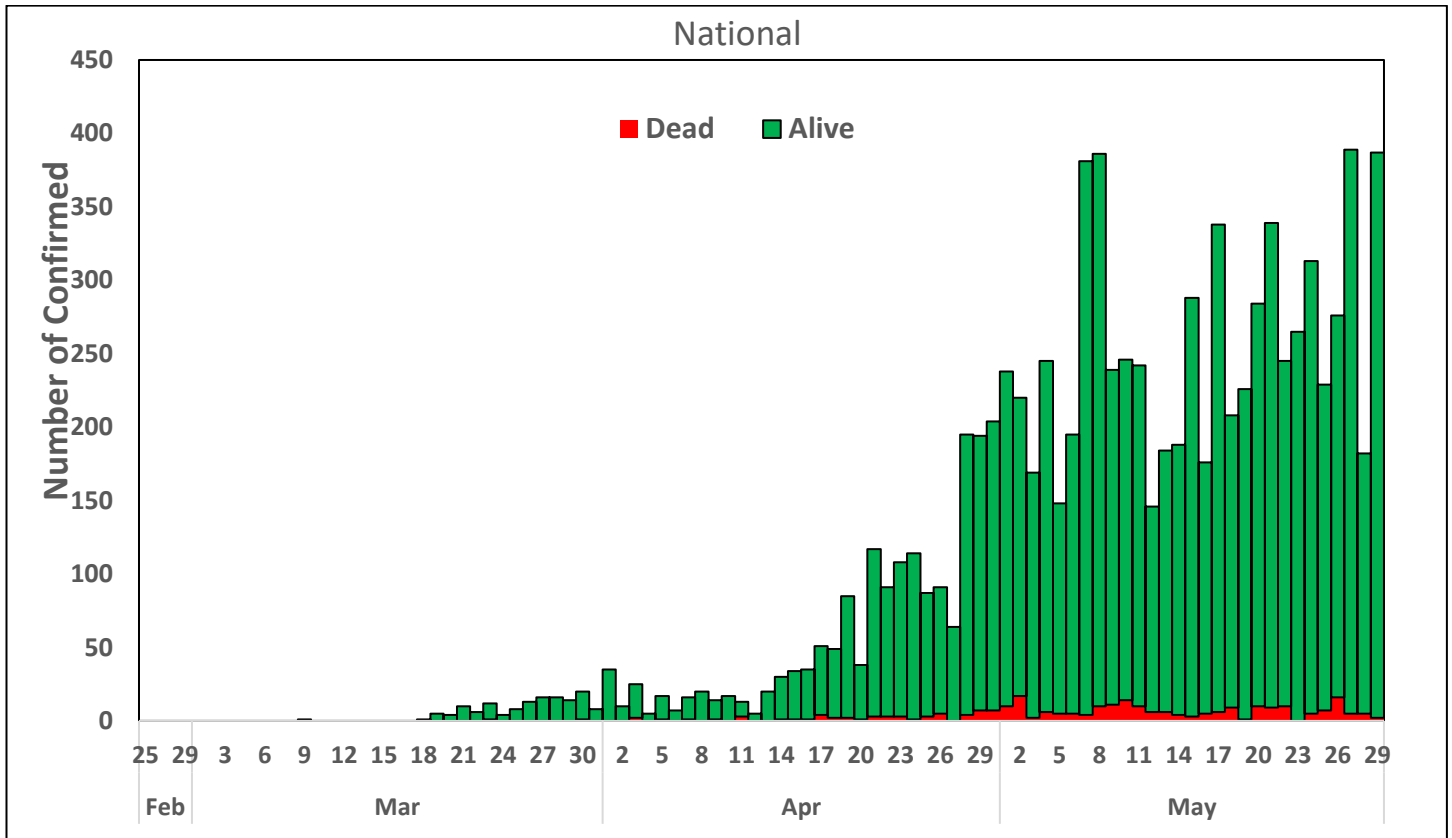
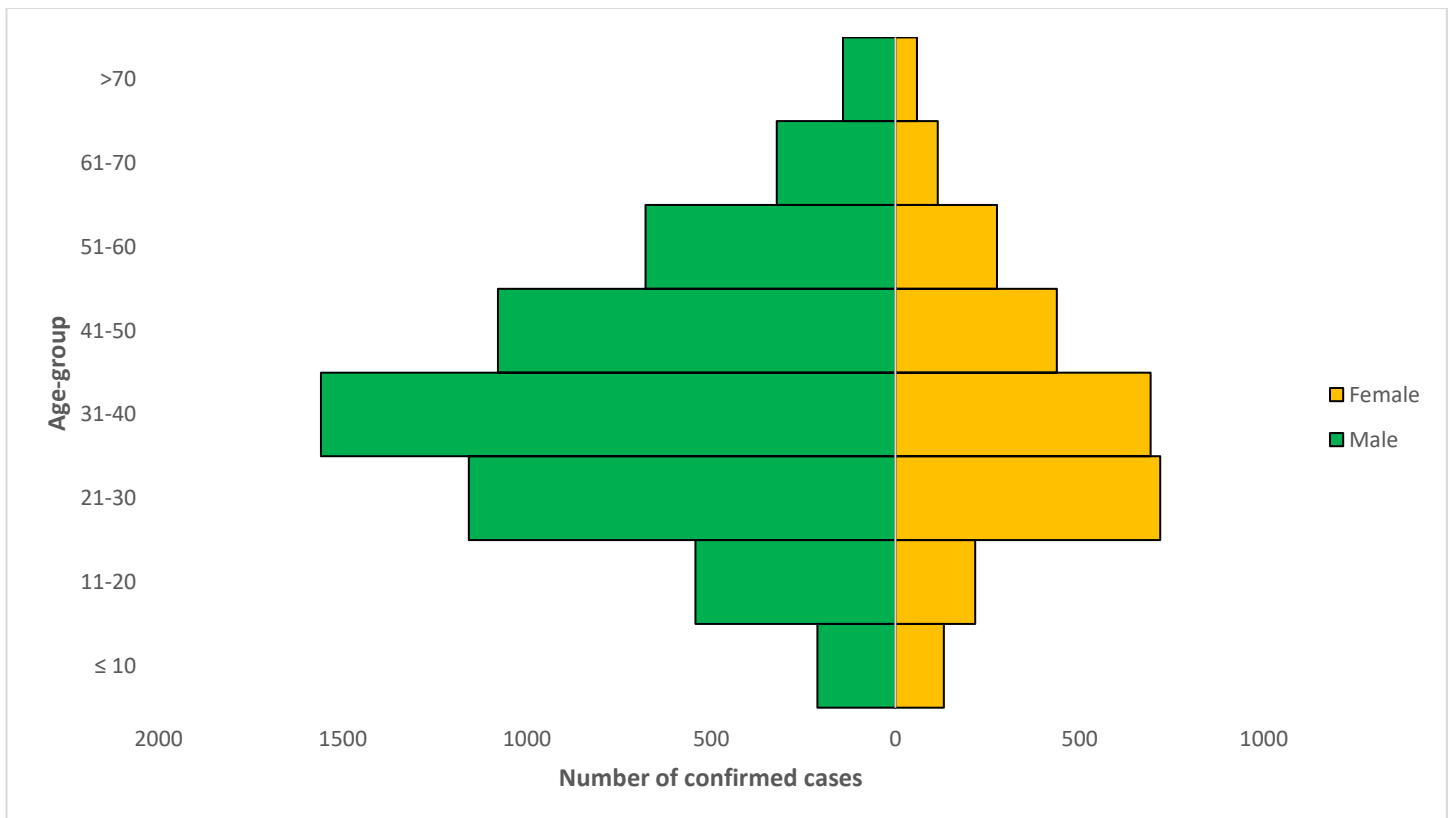


Figure 3: Age-Sex Distribution of Confirmed Cases (WK9 – WK22)



PREPAREDNESS

Since the confirmation of the first case on 27th February 2020, the NCDC has released advisories and statements to help Nigerians and affected groups in particular to respond to the pandemic

- Information on diagnostics of the COVID-19 virus can be found in our [detailed FAQ document](#)
- To increase our testing capacity, NCDC has issued guidelines for the [integration of private labs](#).
- Guidelines for [businesses and employers](#) have been updated
- NCDC has updated its [case definition](#) , [community case definition](#) and [case management guide](#).
- Ahead of the Ramadan fasting period, an [Advisory for Ramadan](#) has been issued.
- NCDC releases periodic [public health advisories](#) to Nigerians on the COVID-19 disease.
- To adhere to post-lockdown measures, NCDC has released an [advisory on the use of face masks](#), as well as information on the [Use of Cloth face masks](#) and [how to make your cloth face masks](#).
- NCDC has released guidelines for the [management of pregnant women and nursing mothers](#) during the pandemic.
- To address burials of loved ones who die from COVID-19, guidelines have been issued to advise on the [management of dead bodies](#).
- NCDC has released a [Self-Isolation and Quarantine Guide](#) and [Mandatory institutional guideline for returnees to Nigeria](#) to help those who are exposed to COVID-19 confirmed cases or returnees to Nigeria.
- For health centres managing cases, the following documents have been released- a guideline for the [Rational Use of Personal Protective Equipment in the care of COVID-19 cases](#).
- As part of plans to increase the testing capacity of the country, the NCDC published a [National Strategy to Scale Up Access to Coronavirus Disease Testing in Nigeria](#) document.
- The Presidential Task Force has published policies and announcements on COVID-19 [available on the website of the Presidency](#) – including presidential addresses, task force updates and information on livelihood and economic support.

RESPONSE

On 28th February 2020, a multi-sectoral Emergency Operations Centre (EOC) was activated at Level 3 – the highest emergency level in Nigeria –led by NCDC in close coordination with the State Public Health EOCs (PHEOC).

- **One new laboratory activated- Bauchi State Reference Molecular Laboratory, Bauchi**
- **Deployment of infection Prevention and Control (IPC) materials to Ebonyi State Ministry of Health (SMOH), Irrua Specialist Teaching Hospital, Irrua, Edo and Kwara SMOH, Ilorin**
- **Provided 316 CareKits to returnees in Abuja**
- **Continued engagement with stakeholders on development of guidelines for safe reopening of schools**
- **Conducted sensitisation of returnees on Standard Infection Prevention and Control (IPC) Precautions**
- Continued implementation of priority activities through State Infection Prevention and Control (IPC) focal persons and partners in Local Government Areas (LGAs) with high burden of cases
- Ongoing biosafety training for laboratory staff in Kano state
- Held a high-level technical session with the national laboratory and state response teams aimed at further improving turnaround time and test results communication
- All education materials can be found via www.covid19.ncdc.gov.ng