



### Highlights

- The Lassa fever (LF) outbreak is currently active<sup>i</sup> in nine states (Ogun, Bauchi, Plateau, Ebonyi, Ondo, Edo, Taraba, Nasarawa and Rivers) – *Figure 1*
- Since the onset of LF outbreak in Dec. 2016 (Week 49), a total 44, confirmed<sup>ii</sup> (37) and probable<sup>iii</sup> (7), have been reported with 24 deaths (19 deaths in confirmed and 5 in probable).
- Case Fatality Rate for confirmed/probable cases is 54.5%
- In reporting Week 5 (Jan. 30 – Feb. 3, 2017), there were sixty-nine (69) suspected cases with seven (7) laboratory confirmed cases. The new laboratory confirmed cases were in Edo (4), Ondo (2) and Bauchi (1).



Figure 1. States with confirmed cases as at Feb. 3, 2017

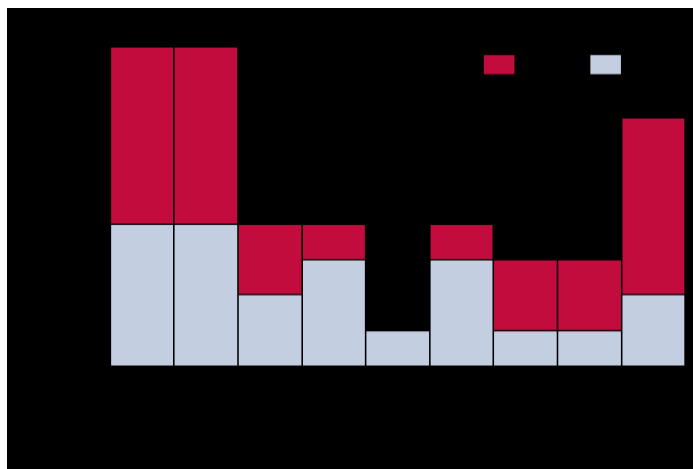


Figure 2. Cases of Lassa fever by epidemiological week in Nigeria - Dec. 2016 to Feb. 2017 (updated as at Feb. 3 2017), N = 44

<sup>i</sup> "Active" means where there has been at least one confirmed case, and contacts within 21 days post exposure

<sup>ii</sup> Any suspected case with laboratory confirmation (positive IgM antibody, PCR or virus isolation).

<sup>iii</sup> Any suspected case (see definition above) but who died without collection of specimen for laboratory testing