

# COVID-19 SITUATION REPORT

## SITUATION REPORT 93

Sunday, 31<sup>st</sup> May 2020



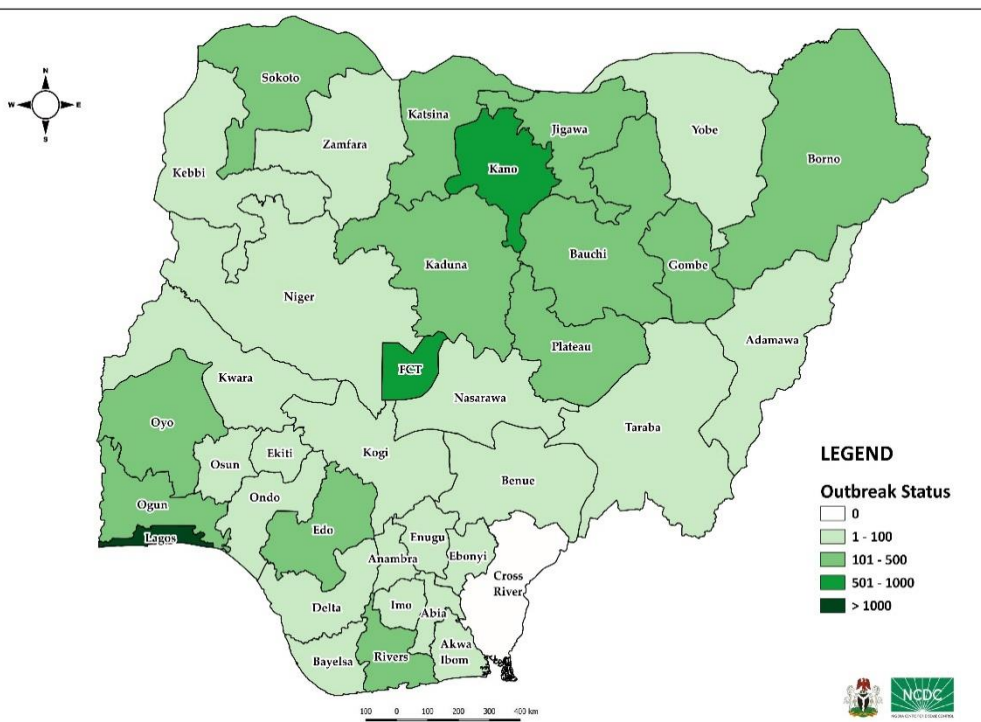
DATA AS REPORTED AND ACCURATE BY NCDC by Midnight 31<sup>st</sup> May 2020

### HIGHLIGHTS

- Three hundred and seven (**307**) confirmed cases were reported in the last 24 hours in fifteen (**15**) states – Lagos (188), FCT (44), Ogun (19), Kaduna (14), Oyo (12), Bayelsa (9), Gombe (5), Delta (3), Kano (3), Bauchi (2), Imo (2), Niger (2), Rivers (2), Kwara (1) and Plateau (1).
- No new state recorded a confirmed COVID-19 case in the last 24 hours. The total number of states including FCT that have reported at least one confirmed case in Nigeria is still **36** (35 states + FCT).
- One hundred and fifty-one (**151**) cases were discharged in the last 24 hours in eight (**8**) states – Lagos (59), Kano (40), Jigawa (26), FCT (9), Rivers (7), Bauchi (6), Ogun (3) and Delta (1)
- Fourteen (**14**) deaths were recorded in the last 24 hours in eight (**8**) states – Lagos (4), FCT (2), Gombe (2), Kano (2), Bauchi (1), Delta (1), Kaduna (1) and Rivers (1).

### STATE OF THE NATION

Figure 1: Map of Nigeria showing 35 states and FCT affected by COVID-19



### SITUATION UPDATES

Total (New in the last 24 hours)

SAMPLES TESTED

**63882 (1300)**

CONFIRMED CASES

**10162 (307)**

AFFECTED STATES INCLUDING FCT

**36 (0)**

DISCHARGED CASES

**3007 (151)**

CONFIRMED FATALITIES

**287 (14) – 3% CFR**

DEMOGRAPHICS

MALE – 6882 (68%)

FEMALE – 3280 (32%)

MOST AFFECTED AGE GROUP

31 - 40 (24%)

PERSONS OF INTEREST

**10023 (Total)**

**9,978 (99.6% - Exceeded Follow Up)**

PROVENANCE

TRAVEL HISTORY – 223 (2%)

CONTACTS – 2407 (24%)

UNKNOWN EXPOSURE – 7532 (74%)

GLOBAL UPDATES

TOTAL NUMBER OF CASES

**5,934,936 (367,166 deaths)**

COUNTRIES & TERRITORIES AFFECTED\*

**213**

\*Excluding the 2 International Conveyances

## GENERAL FACT SHEET – DATA AS AT MAY 31<sup>st</sup> 2020

Table 1: States with reported laboratory-confirmed COVID-19 cases, recoveries, deaths and days since last reported case

STATES	CONFIRMED CASES		DISCHARGED CASES		DEATHS		TOTAL ACTIVE CASES	DAYS SINCE LAST REPORTED CASE
	CUMULATIVE	NEW	CUMULATIVE	NEW	CUMULATIVE	NEW		
Lagos	4943	188	825	59	54	4	4064	0
Kano	954	3	240	40	45	2	669	0
FCT	660	44	182	9	19	2	459	0
Katsina	364	0	68	0	14	0	282	4
Oyo	292	12	97	0	6	0	189	0
Edo	284	0	69	0	13	0	202	2
Ogun	278	19	149	3	9	0	120	0
Borno	271	0	167	0	26	0	78	2
Jigawa	270	0	135	26	5	0	130	2
Kaduna	258	14	157	0	8	1	93	0
Bauchi	238	2	220	6	8	1	10	0
Rivers	206	2	59	7	14	1	133	0
Gombe	161	5	122	0	6	2	33	0
Sokoto	116	0	96	0	14	0	6	9
Plateau	105	1	53	0	2	0	50	0
Kwara	88	1	37	0	1	0	50	0
Delta	83	3	17	1	8	1	58	0
Zamfara	76	0	71	0	5	0	0	13
Nasarawa	62	0	18	0	2	0	42	4
Yobe	52	0	24	0	7	0	21	2
Akwa Ibom	45	0	14	0	2	0	29	3
Osun	45	0	35	0	4	0	6	6
Ebonyi	40	0	8	0	0	0	32	3
Adamawa	38	0	20	0	4	0	14	4
Imo	36	2	14	0	0	0	22	0
Kebbi	33	0	29	0	4	0	0	3
Niger	32	2	9	0	1	0	22	0
Ondo	25	0	20	0	2	0	3	2
Bayelsa	21	9	7	0	1	0	13	0
Ekiti	20	0	16	0	2	0	2	11
Enugu	18	0	12	0	0	0	6	8
Taraba	18	0	10	0	0	0	8	11
Anambra	11	0	3	0	1	0	7	4
Abia	10	0	3	0	0	0	7	4
Benue	7	0	1	0	0	0	6	4
Kogi	2	0	0	0	0	0	2	4
<b>TOTAL</b>	<b>10162</b>	<b>307</b>	<b>3007</b>	<b>151</b>	<b>287</b>	<b>14</b>	<b>6868</b>	

States including FCT are arranged in descending order by number of total confirmed cases

# SELECTED CHARTS

Figure 2: Daily Epidemic Curve of Confirmed Cases (WK9 – WK22)

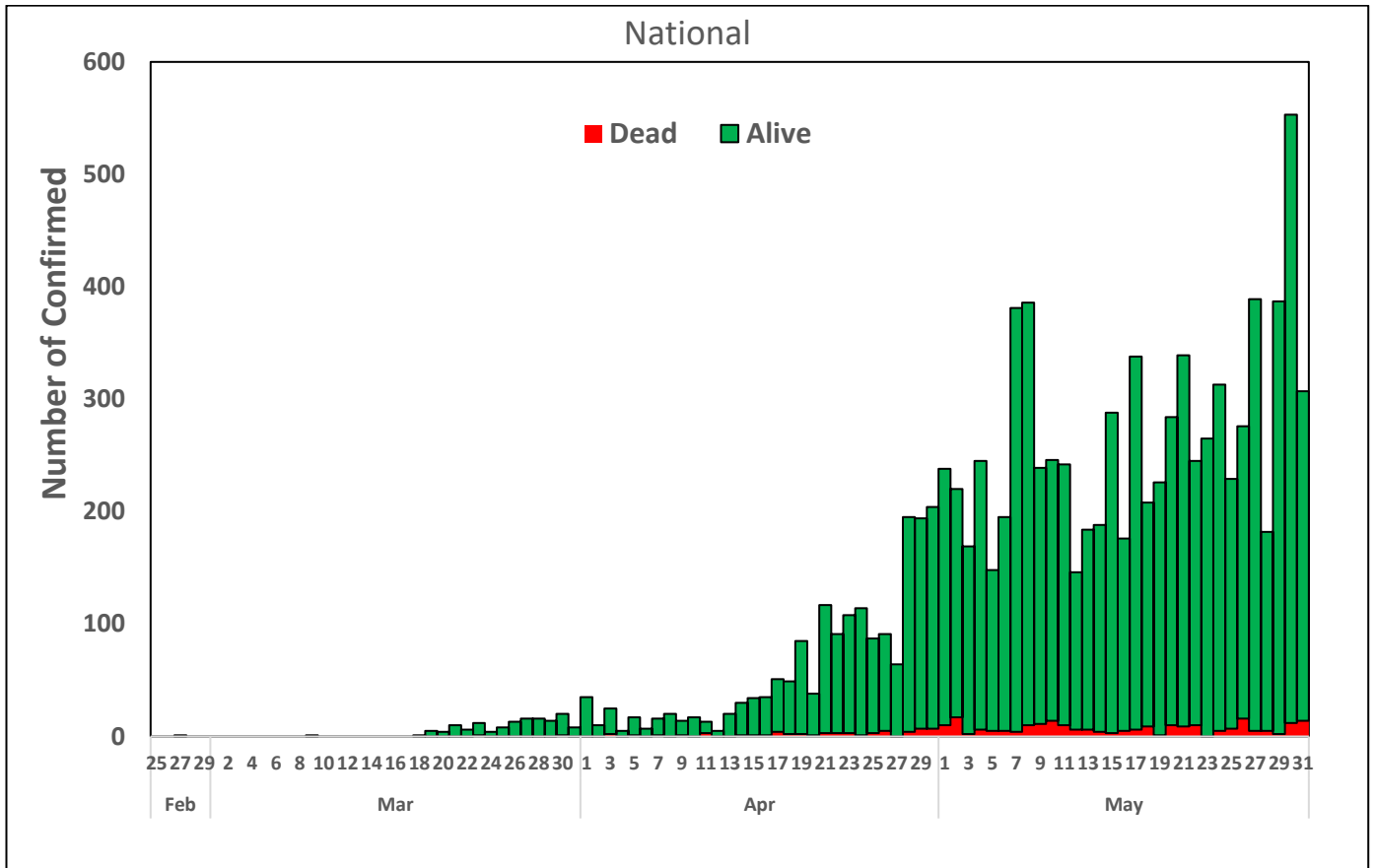
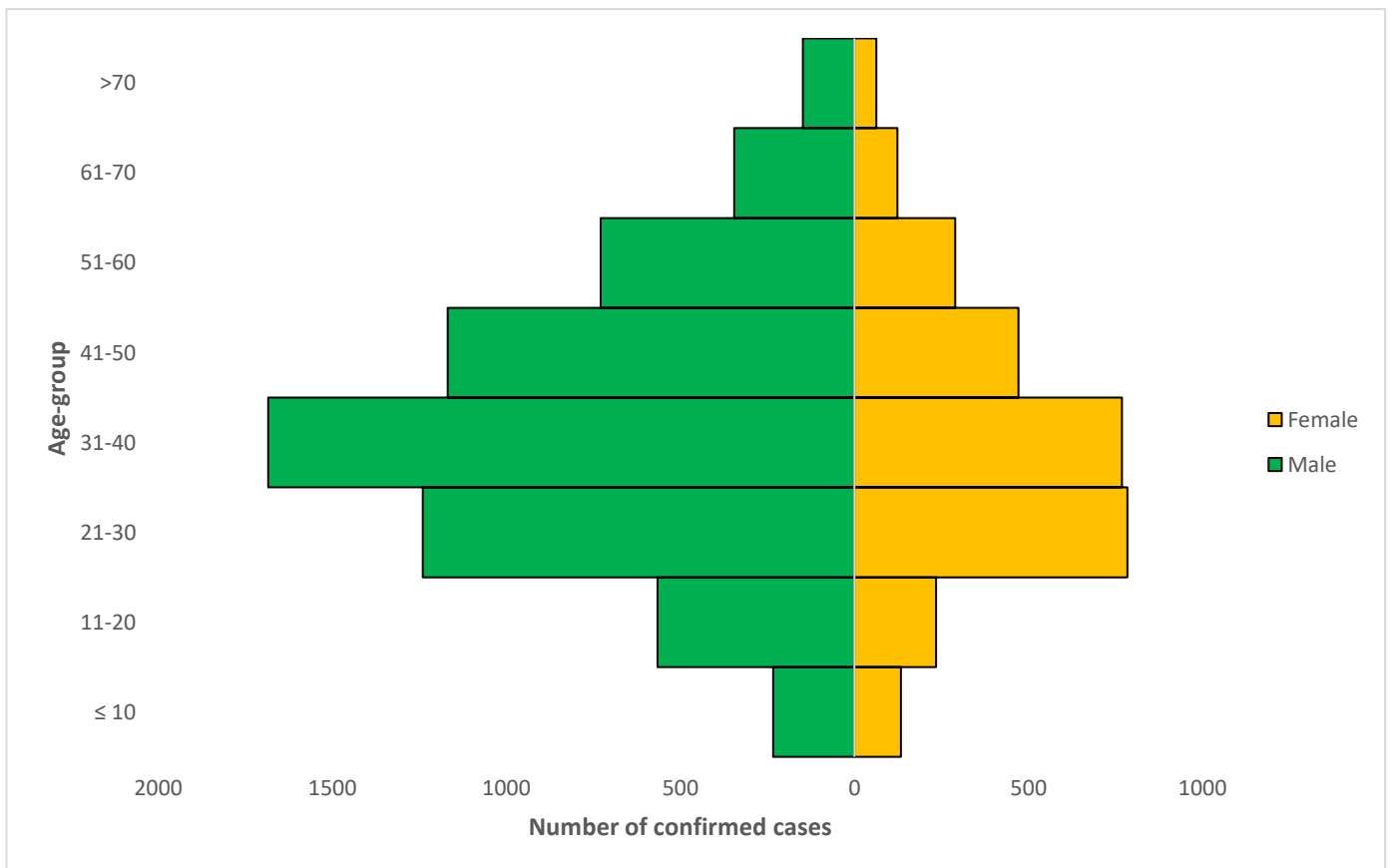


Figure 3: Age-Sex Distribution of Confirmed Cases (WK9 – WK22)



## PREPAREDNESS

Since the confirmation of the first case on 27<sup>th</sup> February 2020, the NCDC has released advisories and statements to help Nigerians and affected groups in particular to respond to the pandemic

- Information on diagnostics of the COVID-19 virus can be found in our [detailed FAQ document](#)
- To increase our testing capacity, NCDC has issued guidelines for the [integration of private labs](#).
- Guidelines for [businesses and employers](#) have been updated
- NCDC has updated its [case definition](#) , [community case definition](#) and [case management guide](#).
- Ahead of the Ramadan fasting period, an [Advisory for Ramadan](#) has been issued.
- NCDC releases periodic [public health advisories](#) to Nigerians on the COVID-19 disease.
- To adhere to post-lockdown measures, NCDC has released an [advisory on the use of face masks](#), as well as information on the [Use of Cloth face masks](#) and [how to make your cloth face masks](#).
- NCDC has released guidelines for the [management of pregnant women and nursing mothers](#) during the pandemic.
- To address burials of loved ones who die from COVID-19, guidelines have been issued to advise on the [management of dead bodies](#).
- NCDC has released a [Self-Isolation and Quarantine Guide](#) and [Mandatory institutional guideline for returnees to Nigeria](#) to help those who are exposed to COVID-19 confirmed cases or returnees to Nigeria.
- For health centres managing cases, the following documents have been released- a guideline for the [Rational Use of Personal Protective Equipment in the care of COVID-19 cases](#).
- As part of plans to increase the testing capacity of the country, the NCDC published a [National Strategy to Scale Up Access to Coronavirus Disease Testing in Nigeria](#) document.
- The Presidential Task Force has published policies and announcements on COVID-19 [available on the website of the Presidency](#) – including presidential addresses, task force updates and information on livelihood and economic support.

## RESPONSE

On 28<sup>th</sup> February 2020, a multi-sectoral Emergency Operations Centre (EOC) was activated at Level 3 – the highest emergency level in Nigeria –led by NCDC in close coordination with the State Public Health EOCs (PHEOC).

- **Updated clinical data on the Surveillance and Outbreak Response Management and Analysis System (SORMAS) platform**
- **Carried out assessment and set up triage areas at General Hospital Owutu Eda, Afikpo South and Mater Misericordiae Private Hospital Ebonyi**
- **Conducted training on safe sample collection with participants from all 33 Local Government Areas (LGAs) to drive community testing in Oyo State.**
- **Sensitised Hausa communities in Ebonyi State livestock market on proper hand and respiratory hygiene**
- **Completed biosafety training for laboratories in Kano State**
- **Ongoing engagement with relevant stakeholders to harmonise COVID-19 case management data**
- Strategic engagement with States` coordination teams in the South East zone, Borno, Jigawa and Katsina on improving sample collection and testing
- Conducted in-depth analysis of Health Care Worker Infections and identified critical control points for targeted intervention
- Finalised plan on engagement of existing community volunteers to conduct house to house sensitisation on COVID-19 at the community level in collaboration with other government agencies
- Completed commodities distribution to State Ministry of Health in Kwara and Ebonyi
- **Safety packs distributed to over 1200 returnees from other countries and quarantined in Abuja and Lagos**
- One new laboratory activated- Bauchi State Reference Molecular Laboratory, Bauchi

- Deployment of infection Prevention and Control (IPC) materials to Ebonyi state Ministry of Health (SMOH), Irrua Specialist Teaching Hospital, Irrua- Edo state and Kwara SMOH, Ilorin
- Continued engagement with stakeholders on development of guidelines for safe reopening of schools
- All education materials can be found via [www.covid19.ncdc.gov.ng](http://www.covid19.ncdc.gov.ng)