



# SITUATION REPORT

Nigeria Centre For Disease Control and Prevention (NCDC)

NCDC.GOV.NG

PLOT 800 EBITU UKIWE STREET, JABI ABUJA, NIGERIA TOLL FREE CALL: 6232 E:info@ncdc.gov.ng

@NCDCgov

<b>TITLE:</b>	<b>UPDATE ON MONKEYPOX (MPX) IN NIGERIA</b>
<b>SERIAL NUMBER:</b>	<b>25</b>
<b>EPI-WEEK:</b>	<b>41</b>
<b>DATE:</b>	<b>October 16, 2022</b>

**Table 1 – Key Indicators**

Key Indicators	Number
Total confirmed cases in Epi Week 41, 2022	22
Total suspected cases from January 1 <sup>st</sup> to October 16 <sup>th</sup> , 2022 (Epi week 1 to 41)	1351
Total confirmed cases from January 1 <sup>st</sup> to October 16 <sup>th</sup> , 2022 (Epi week 1 to 41)	552
Total deaths from January 1 <sup>st</sup> to October 16 <sup>th</sup> , 2022 (Epi week 1 to 41)	7
Total deaths Sept 2017 - October 16 <sup>th</sup> , 2022	15
Total confirmed cases in 2017	88
Total confirmed cases in 2018	49
Total confirmed cases in 2019	47
Total confirmed cases in 2020	8
Total confirmed cases in 2021	34
Grand total confirmed cases (Sept 2017 – October 16 <sup>th</sup> , 2022)	778
Grand total suspected cases (Sept 2017 – October 16 <sup>th</sup> , 2022)	1863

- Seventy-nine (79) new suspected cases reported in Epi week 41, 2022 (10<sup>th</sup> to 16<sup>th</sup> October 2022) from sixteen (16) states and FCT – Lagos (26), Bayelsa (11), Katsina (9), Ogun (9), Kaduna (5), Edo (3), Ondo (3), FCT (2), Imo (2), Rivers (2), Akwa Ibom (1), Benue (1), Kebbi (1), Kogi (1), Oyo (1), Plateau (1) and Taraba (1).
- Of Seventy-nine (79) suspected cases, twenty-two (22) new confirmed cases have been recorded in Epi week 41 from Nine (9) states and FCT – Bayelsa (5), Ogun (5), Lagos (3), Ondo (2), Rivers (2), Akwa Ibom (1), Edo (1), FCT (1), Kaduna (1) and Plateau (1).
- From 1<sup>st</sup> January to 16<sup>th</sup> October 2022, Nigeria has recorded 1351 suspected cases with 552 confirmed cases (367 male, 185 female) from thirty-one (31) states and FCT – Lagos (141), Abia (40), Bayelsa (33), Rivers (30), Ondo (29), Imo (27), Ogun (26), Delta (22), Edo (20), Anambra (18), FCT (17), Adamawa (16), Nasarawa (13), Benue (10), Oyo (10), Plateau (10), Akwa Ibom (10), Kaduna (10), Ebonyi (9), Kwara (8), Borno (8), Cross River (8), Taraba (7), Katsina (7), Kano (5), Gombe (5), Kogi (4), Osun (4), Kebbi (2), Niger (1), Bauchi (1) and Enugu (1).
- Seven (7) associated deaths were recorded from 7 states in 2022 – Delta (1), Lagos (1), Ondo (1) and Akwa Ibom (1), Kogi (1), Taraba (1) and Imo (1). **CFR 1.3%**

- Overall, since the re-emergence of monkeypox in September 2017, 1863 suspected cases have been reported from 35 states and FCT in the country. Of these 1863 suspected cases, there have been 778 (41.7%) confirmed (520 male, 258 female) from 32 states and FCT - Lagos (171), Rivers (82), Bayelsa (76), Delta (51), Abia (43), Imo (35), Edo (30), Ondo (29), Ogun (27), FCT (23), Cross River (22), Anambra (20), Akwa Ibom (17), Adamawa (16), Oyo (16), Nasarawa (15), Plateau (13), Benue (12), Ebonyi (10), Kaduna (10), Kwara (8), Borno (8), Taraba (7), Katsina (7), Kano (5), Gombe (5), Enugu (5), Kogi (4), Osun (4), Ekiti (2), Niger (2), Kebbi (2) and Bauchi (1).
- Fifteen (15) deaths have been recorded since September 2017 (CFR= 1.9%) in eleven states - Lagos (3), Edo (2), Imo (2), Cross River (1), FCT (1), Rivers (1), Ondo (1) Delta (1), Akwa Ibom (1), Taraba (1) and Kogi (1).

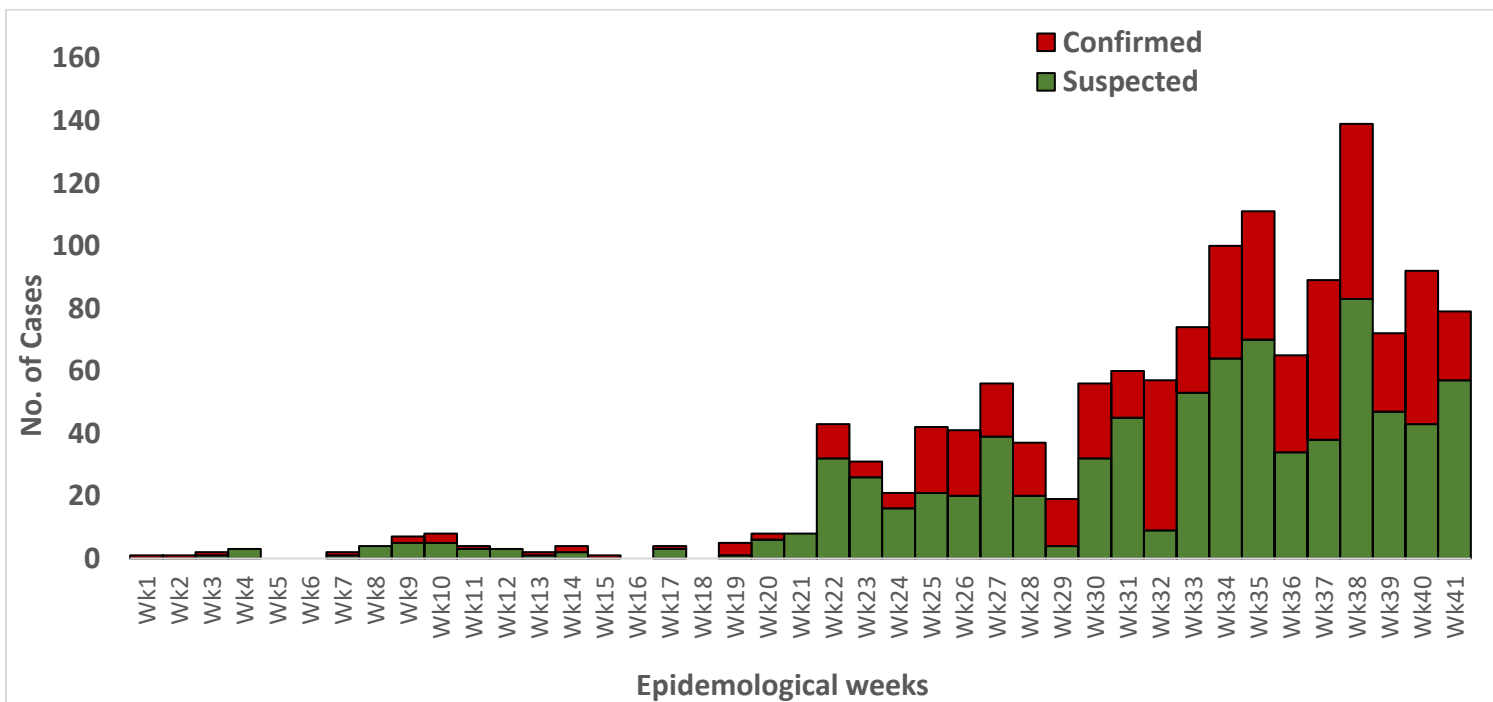


Figure 1: Epidemic Curve of Suspected & Confirmed MPX Cases from Jan. 1st, 2022, till date

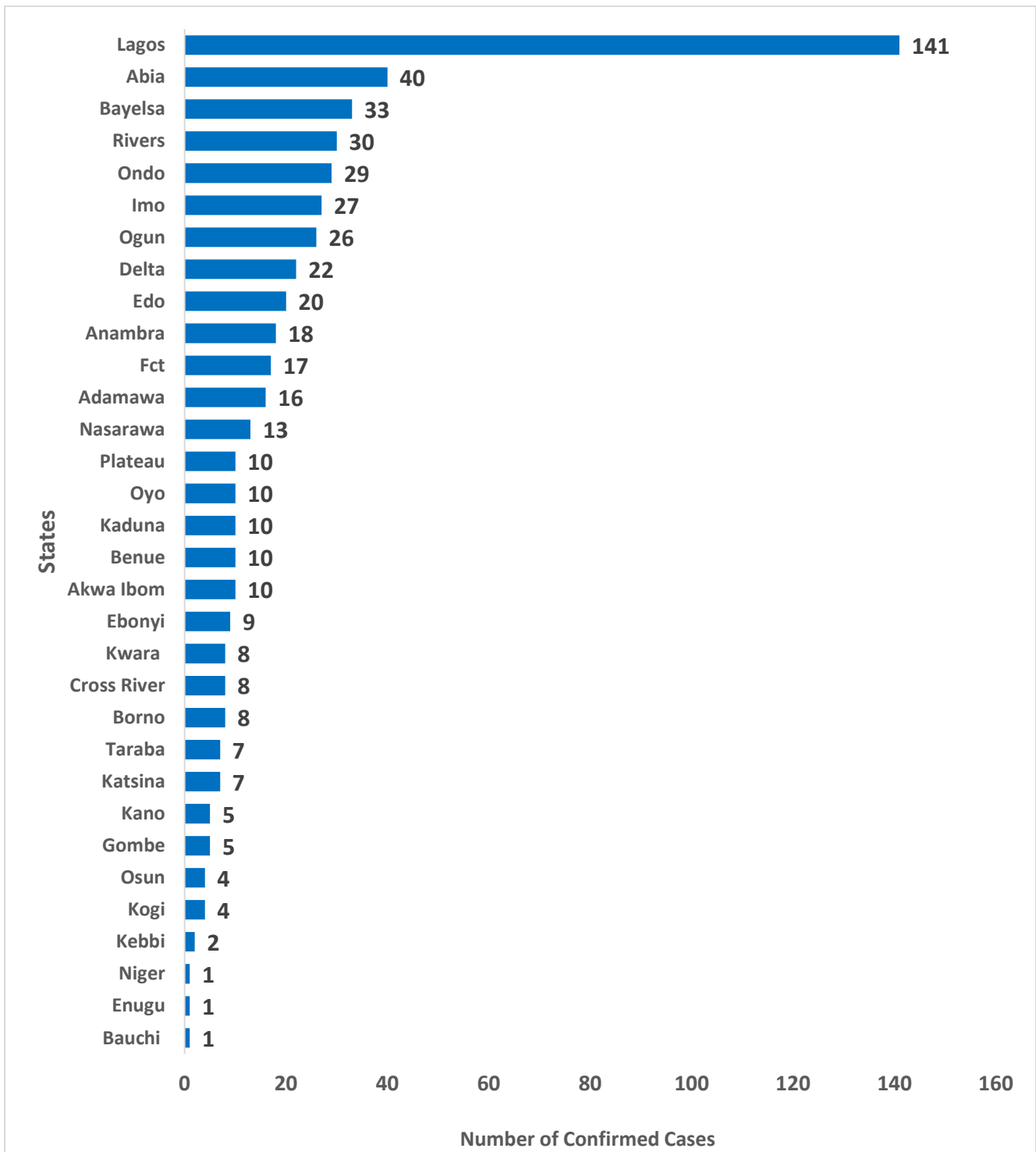


Figure 2: Bar chart Showing confirmed monkeypox cases by state from January 1<sup>st</sup> – 16<sup>th</sup> October 2022

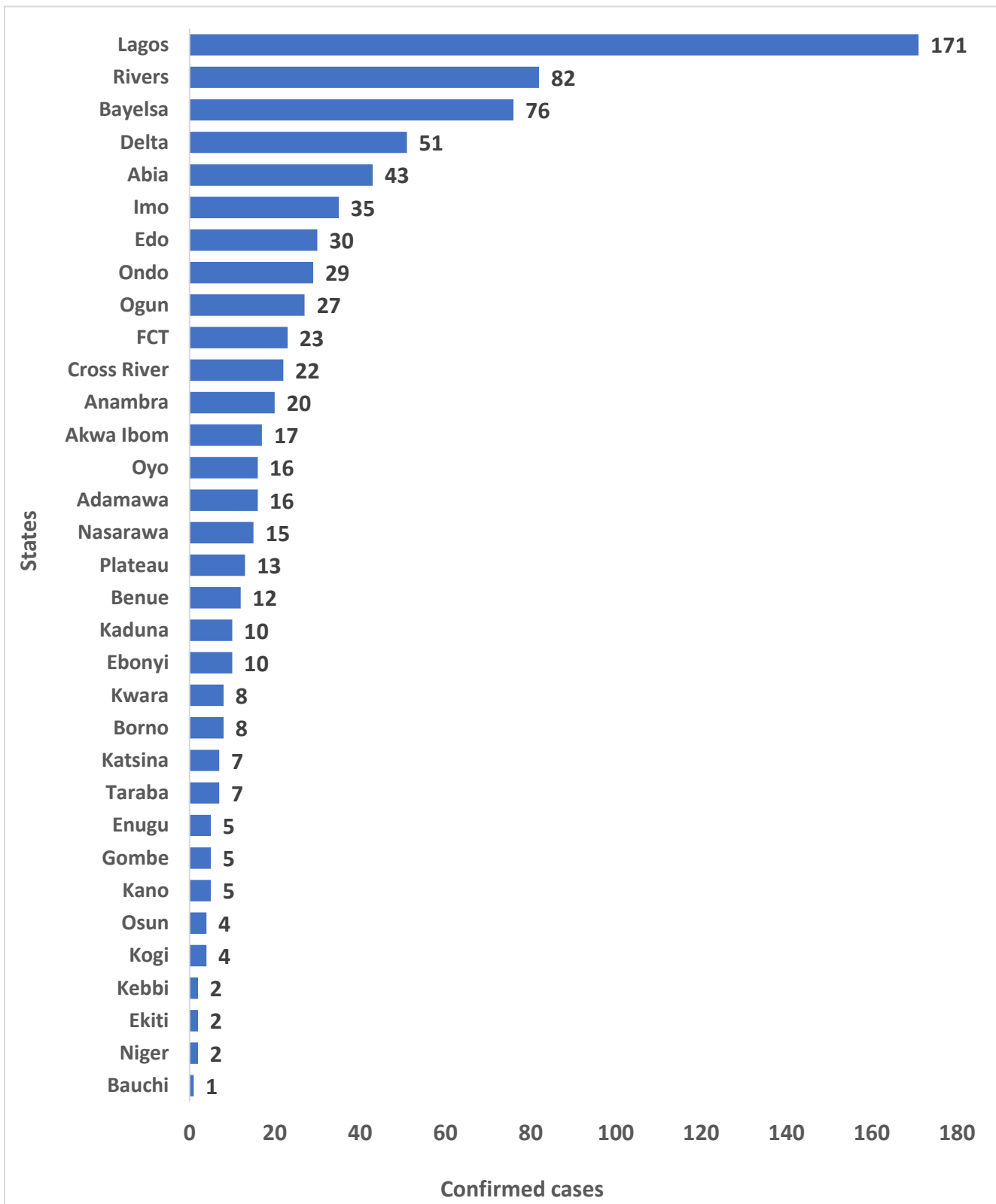
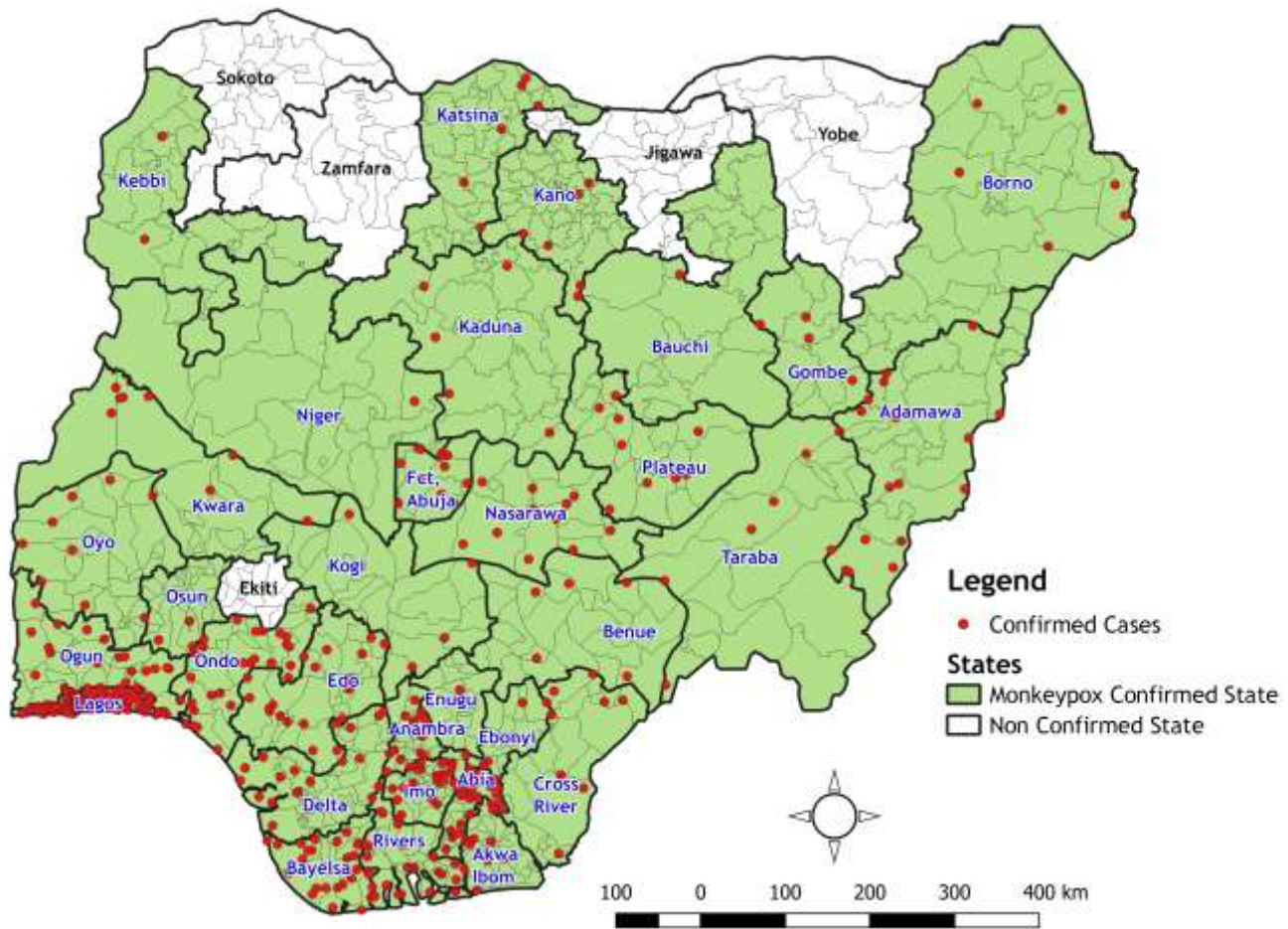


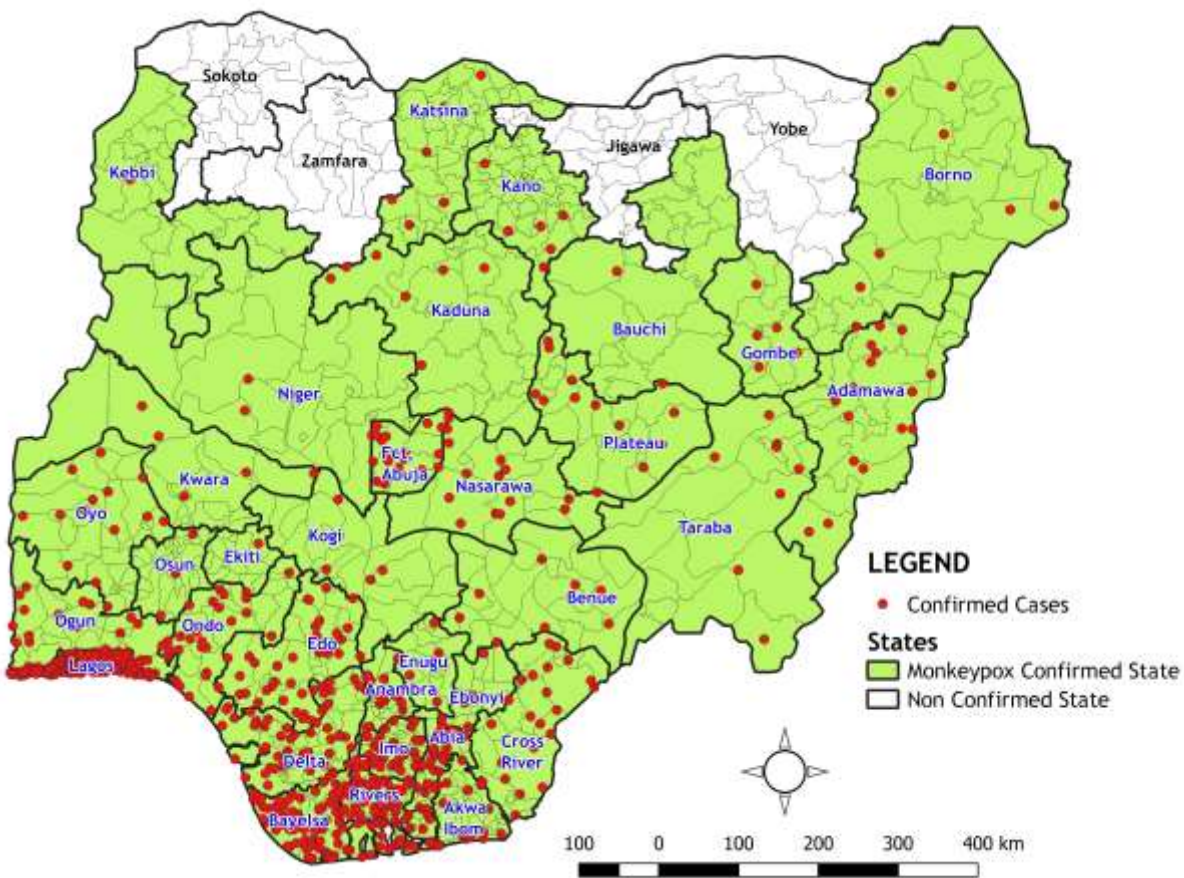
Figure 3: Bar chart Showing confirmed monkeypox cases by state, September 2017 – 16<sup>th</sup> October 2022

Table 2: Nigeria confirmed monkeypox cases by state, September 2017 – 16<sup>th</sup> October 2022

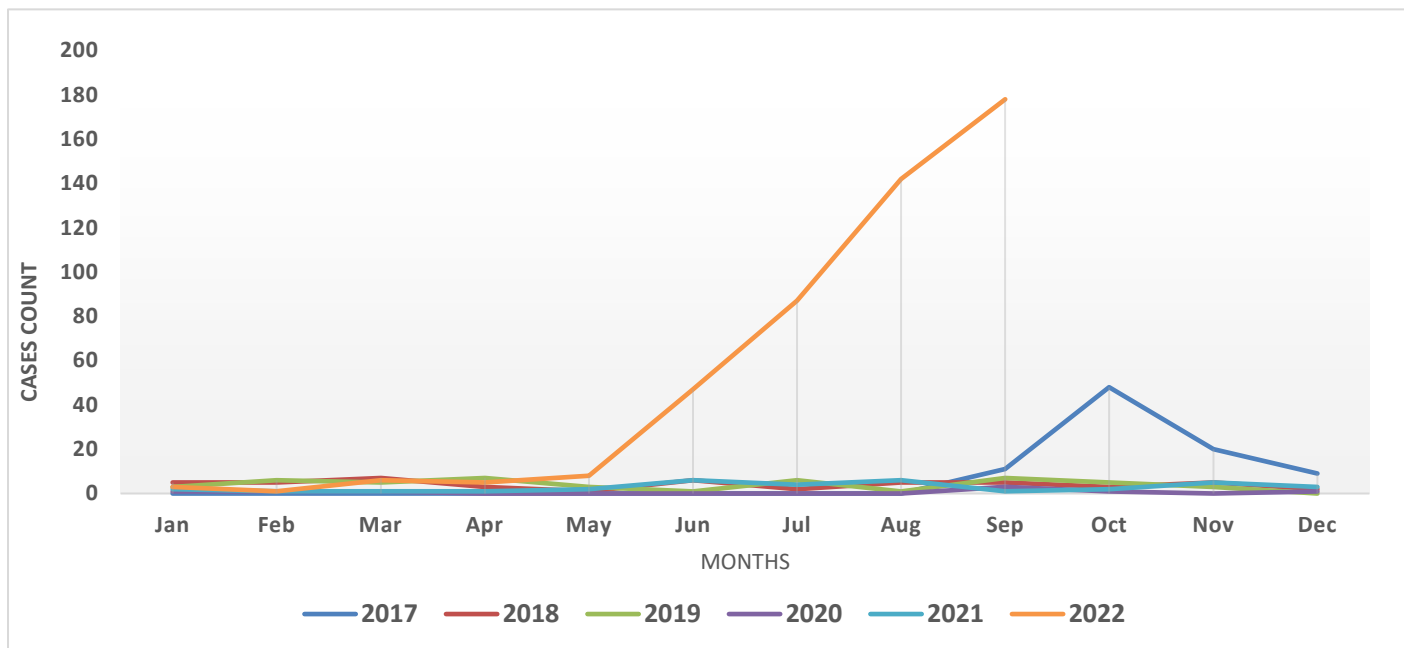
State	2017	2018	2019	2020	2021	2022	Total
Lagos	4	1	15	4	6	141	171
Rivers	25	14	7	1	5	30	82
Bayelsa	19	11	7	0	6	33	76
Delta	3	6	10	1	9	22	51
Abia	1	2	0	0	0	40	43
Imo	5	2	1	0	0	27	35
Edo	4	1	1	0	4	20	30
Ondo	0	0	0	0	0	29	29
Ogun	0	0	0	0	1	26	27
FCT	5	0	0	0	1	17	23
Cross River	9	3	1	0	1	8	22
Anambra	0	1	1	0	0	18	20
Akwa Ibom	6	0	1	0	0	10	17
Adamawa	0	0	0	0	0	16	16
Oyo	1	3	2	0	0	10	16
Nasarawa	1	1	0	0	0	13	15
Plateau	0	2	0	1	0	10	13
Benue	2	0	0	0	0	10	12
Ebonyi	0	0	0	1	0	9	10
Kaduna	0	0	0	0	0	10	10
Borno	0	0	0	0	0	8	8
Kwara	0	0	0	0	0	8	8
Taraba	0	0	0	0	0	7	7
Katsina	0	0	0	0	0	7	7
Kano	0	0	0	0	0	5	5
Gombe	0	0	0	0	0	5	5
Enugu	1	2	1	0	0	1	5
Kogi	0	0	0	0	0	4	4
Osun	0	0	0	0	0	4	4
Niger	0	0	0	0	1	1	2
Ekiti	2	0	0	0	0	0	2
Kebbi	0	0	0	0	0	2	2
Bauchi	0	0	0	0	0	1	1
<b>Grand Total</b>	<b>88</b>	<b>49</b>	<b>47</b>	<b>8</b>	<b>34</b>	<b>552</b>	<b>778</b>



**Figure 4:** Map of Nigeria Showing States with Confirmed MPX Cases from January 2022 till date (31 states and FCT)



**Figure 5:** Map of Nigeria Showing States with Confirmed MPX Cases from September 2017 till date (32 states and FCT)



**Figure 6:** Nigeria confirmed Monkeypox cases by the year of incidence- September 2017 to 30<sup>th</sup> September 2022

**Table 3:** Age distribution of confirmed Monkeypox cases September 2017 – 16<sup>th</sup> October 2022

Age Group	2017	2018	2019	2020	2021	2022	Total
0-10 Years	7	5	1	0	1	85	99
11-20 Years	12	4	1	0	4	89	110
21-30 Years	34	13	13	4	10	132	206
31- 40 Years	26	17	22	4	13	158	240
41-50 Years	9	10	9	0	5	66	99
51-60 Years	0	0	1	0	1	22	24
<b>Total</b>	<b>88</b>	<b>49</b>	<b>47</b>	<b>8</b>	<b>34</b>	<b>552</b>	<b>778</b>

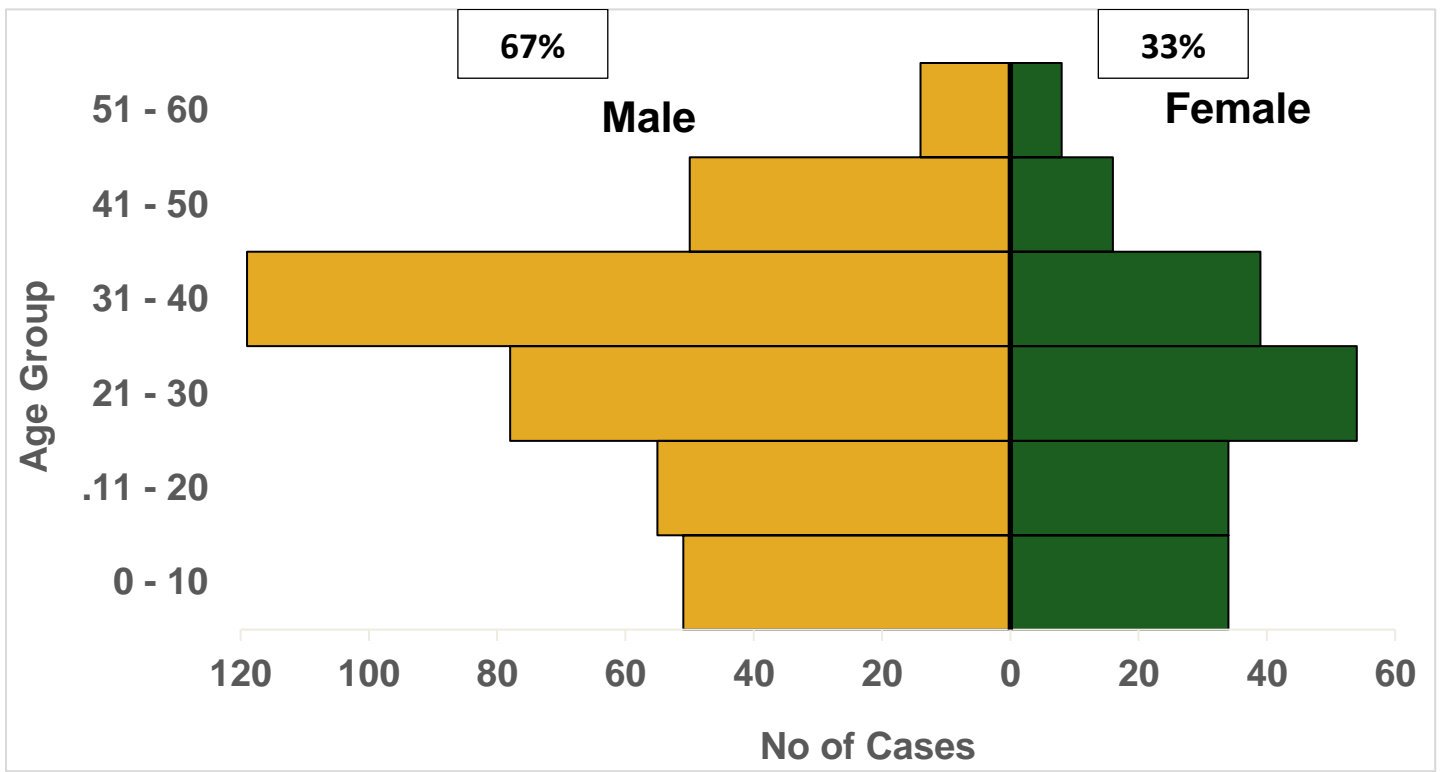


Figure 7: Age and sex distribution of Nigeria confirmed monkeypox cases January 1<sup>st</sup> – 16<sup>th</sup> October 2022

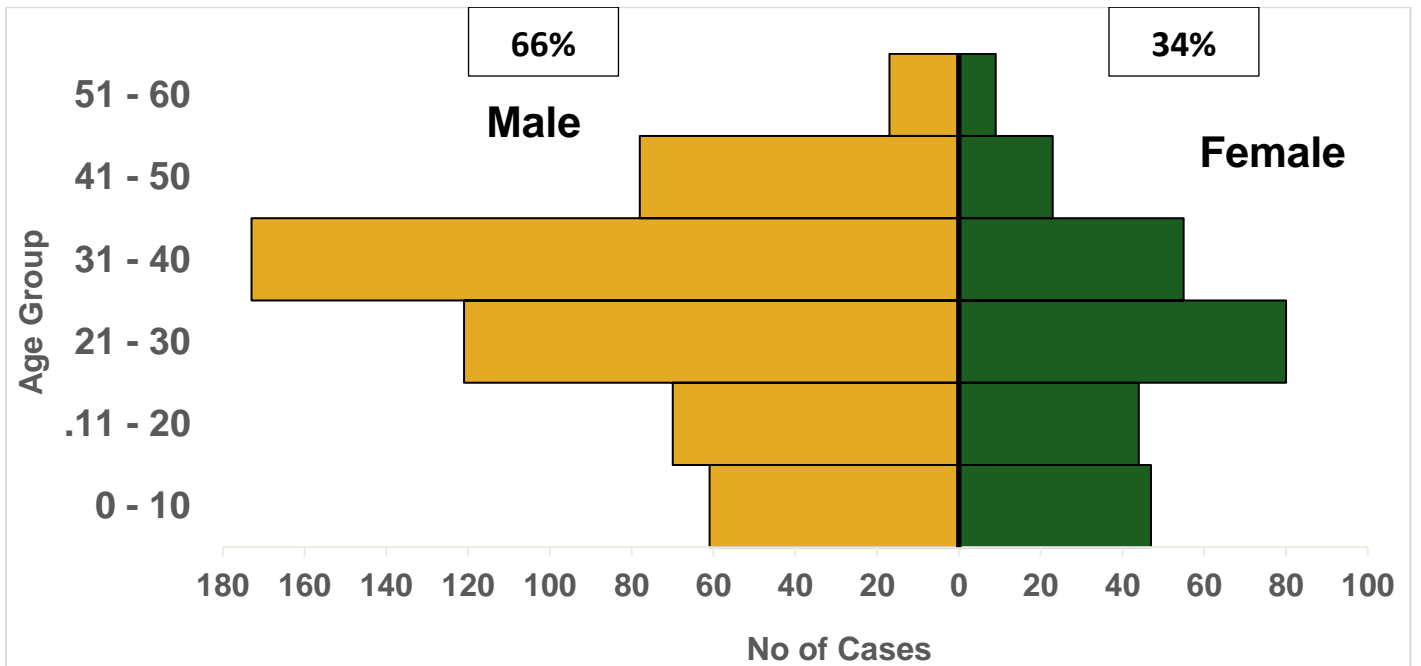


Figure 8: Age and sex distribution of Nigeria confirmed monkeypox cases September 2017 – 16<sup>th</sup> October 2022



## Response activities

Pillar	Activities to date	Next steps
<b>Coordination</b>	<ul style="list-style-type: none"> <li>Supporting the daily activities of the activated Emergency Operations Centre (EOC)</li> </ul>	<ul style="list-style-type: none"> <li>The EOC will continue coordinating ongoing response activities in the country while contributing to the global response.</li> <li>The multi-agency MPX Emergency Operation Centre coordinates monkeypox activities at NCDC.</li> </ul>
<b>Risk communication</b>	<ul style="list-style-type: none"> <li>Daily tracking, monitoring and response to rumours and misinformation of Monkeypox in Nigeria</li> <li>Collaboration with partners to develop Monkeypox-specific awareness content</li> </ul>	<ul style="list-style-type: none"> <li>Continue monitoring and analysis of Monkeypox infodemics</li> <li>Continue engagement of social media channels with key messages on Monkeypox prevention</li> </ul>
<b>Surveillance</b>	<ul style="list-style-type: none"> <li>Providing off-site support to states on case identification, reporting and response</li> </ul>	<ul style="list-style-type: none"> <li>Ensure timely uploading of cases to the SORMAS platform</li> <li>To provide off site support to states on conduct of active case searches in facilities and communities</li> <li>Follow-up calls/emails to the state's surveillance team and MPX treatment facilities.</li> </ul>
<b>IPC</b>	<ul style="list-style-type: none"> <li>Development of a screening and triage tool on MPX for health facilities</li> <li>Engagement meeting with U.S CDC team on wide range of support to the National IPC program and Orange Network</li> <li>MPX HCW infection surveillance continues across the Orange Network sites and states</li> <li>Formation of a small technical working group on MPX IPC guideline development</li> </ul>	<ul style="list-style-type: none"> <li>○</li> <li>Training of 25 IPC FPs in two (2) states (Plateau and Benue) from APIN-Orange Network on IPC workplan development and MPX</li> <li>Continuous support to states and facilities on IPC program</li> </ul>
<b>Case management</b>	<ul style="list-style-type: none"> <li>Following up with all positive cases at the state level</li> </ul>	<ul style="list-style-type: none"> <li>Ensure up-to-date statistics on cases at Treatment Centre and</li> </ul>

		those on home-based care
<b>POE</b>	<ul style="list-style-type: none"> <li>• Screening at points of entry for persons of Interest</li> </ul>	<ul style="list-style-type: none"> <li>• Continue ongoing screening activities at points of entry</li> </ul>
<b>Laboratory</b>	<ul style="list-style-type: none"> <li>• All MPX virus sequences are all clade II</li> <li>• Off-site support to states on sample collection from sites to testing lab.</li> </ul>	<ul style="list-style-type: none"> <li>• To shorten Turnaround Time of samples from point of collection to arrival at NRL</li> </ul>

## **Notes on this report**

### ***Data Source***

Information for this disease was case-based data retrieved from the National Monkeypox Emergency Operations Centre.

### **Case definitions**

#### *Suspected case*

- An acute illness with fever  $>38.3^{\circ}\text{C}$ , intense headache, lymphadenopathy, back pain, myalgia, and intense asthenia followed one to three days later by a progressively developing rash often beginning on the face (most dense) and then spreading elsewhere on the body, including soles of feet and palms of the hand

#### *Probable case*

- A case that meets the clinical case definition is not laboratory-confirmed but has an epidemiological link to a confirmed case

#### *Confirmed case*

- A clinically compatible case that is laboratory confirmed

#### *Contact*

- Any person who has been in direct or indirect contact with a confirmed case since the onset of symptoms, i.e., contact with skin lesions, oral secretions, urine, stool, vomitus, blood, sexual contact, sharing a common space (anyone who has been in proximity with or without physical contact with a confirmed case)

#### *Calculations*

- Case Fatality Rate (CFR) for this disease is reported for confirmed cases only