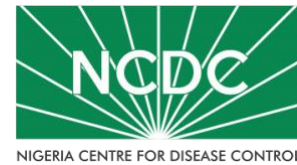


# COVID-19 SITUATION REPORT

## SITUATION REPORT 154

Friday, 31<sup>ST</sup> July 2020



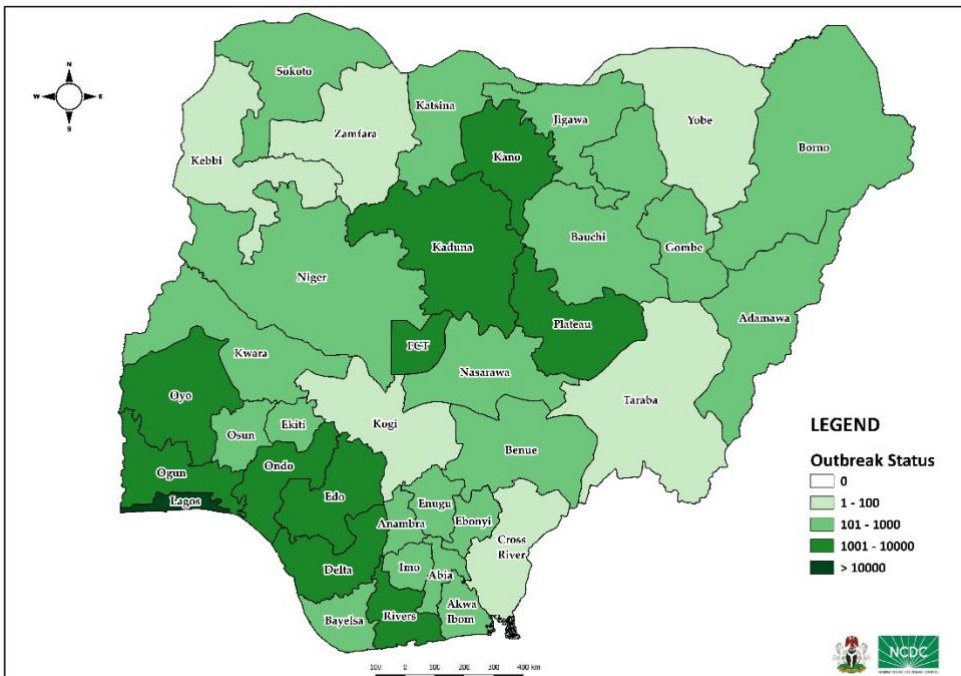
DATA AS REPORTED AND ACCURATE BY NCDC AS AT MIDNIGHT 31<sup>ST</sup> JULY 2020

### HIGHLIGHTS

- Four hundred and sixty-two (**462**) confirmed cases were reported in the last 24 hours from **16** states – FCT (93), Lagos (78), Plateau (64), Kaduna (54), Oyo (47), Ondo (32), Adamawa (23), Bauchi (19), Delta (9), Ogun (9), Rivers (9), Edo (7), Enugu (6), Kano (6), Nasarawa (5) and Osun (1).
- Two hundred and ninety-five (**295**) cases were discharged in the last 24 hours in **11** states – Edo (102), Plateau (50), Kaduna (35), Osun (35), Ogun (20), Oyo (27), Rivers (15), FCT (4), Lagos (3), Bauchi (2) and Bayelsa(2).
- One (**1**) death was recorded in the last 24 hours in **one** state – Edo.
- All **36** states in Nigeria, and the FCT, have reported a confirmed case.

### STATE OF THE NATION

Figure 1: Map of Nigeria showing 36 states and FCT affected by COVID-19



### SITUATION UPDATES

Total (New in the last 24 hours)

SAMPLES TESTED

**283,916 (4,241)**

CONFIRMED CASES

**43,151 (462)**

AFFECTED STATES INCLUDING FCT

**37**

DISCHARGED CASES

**19,565 (295)**

CONFIRMED FATALITIES

**879 (1) – 2.0% CFR**

DEMOGRAPHICS

MALE – 27,932 (65%)

FEMALE – 15,219 (35%)

MOST AFFECTED AGE GROUP

31 - 40 (25%)

PERSONS OF INTEREST

**11,197 (Total)**

**11,084 (99% - Exceeded Follow Up)**

PROVENANCE

TRAVEL HISTORY – 804 (2%)

CONTACTS – 10,621 (25%)

UNKNOWN EXPOSURE – 31,726 (73%)

GLOBAL UPDATES

TOTAL NUMBER OF CASES

**17,106,007 (668,910 deaths)**

COUNTRIES & TERRITORIES AFFECTED\*

**214**

\*Excluding the 2 International Conveyance

## GENERAL FACT SHEET – DATA AS AT 31<sup>ST</sup> JULY 2020

Table 1: States with reported laboratory-confirmed COVID-19 cases, recoveries, deaths and days since last reported case

STATES	CONFIRMED CASES		DISCHARGED CASES		DEATHS		TOTAL ACTIVE CASES	DAYS SINCE LAST REPORTED CASE
	TOTAL	NEW	TOTAL	NEW	TOTAL	NEW		
Lagos	15,121	78	2,148	3	192	0	12,781	0
FCT	3,803	93	1,122	4	42	0	2,639	0
Oyo	2,760	47	1,286	27	27	0	1,447	0
Edo	2,292	7	1,800	102	82	1	410	0
Rivers	1,791	9	1,438	15	52	0	301	0
Kano	1,597	6	1,258	0	53	0	286	0
Delta	1,510	9	1,359	0	43	0	108	0
Kaduna	1,457	54	1,176	35	12	0	269	0
Ogun	1,394	9	1,095	20	23	0	276	0
Plateau	1,188	64	519	50	19	0	650	0
Ondo	1,155	32	548	0	24	0	583	0
Enugu	807	6	425	0	18	0	364	0
Ebonyi	785	0	596	0	24	0	165	2
Kwara	753	0	213	0	19	0	521	2
Katsina	742	0	457	0	23	0	262	3
Borno	613	0	569	0	35	0	9	2
Gombe	607	0	524	0	23	0	60	3
Bauchi	560	19	520	2	13	0	27	0
Abia	545	0	426	0	5	0	114	6
Osun	524	1	266	35	12	0	246	0
Imo	468	0	119	0	9	0	340	2
Benue	346	0	58	0	6	0	282	4
Bayelsa	328	0	279	2	21	0	28	1
Jigawa	322	0	308	0	11	0	3	15
Nasarawa	317	5	223	0	8	0	86	0
Niger	223	0	133	0	12	0	78	3
Akwa Ibom	221	0	121	0	7	0	93	5
Adamawa	163	23	85	0	9	0	69	0
Sokoto	154	0	137	0	16	0	1	6
Anambra	135	0	75	0	12	0	48	2
Ekiti	132	0	55	0	2	0	75	2
Kebbi	90	0	79	0	7	0	4	10
Zamfara	77	0	71	0	5	0	1	13
Yobe	67	0	54	0	8	0	5	1
Taraba	54	0	11	0	0	0	43	10
Cross River	45	0	9	0	3	0	33	2
Kogi	5	0	3	0	2	0	0	28
<b>Total</b>	<b>43,151</b>	<b>462</b>	<b>19,565</b>	<b>295</b>	<b>879</b>	<b>1</b>	<b>22,707</b>	

States, including FCT, are arranged in descending order by number of total confirmed cases and then alphabetical order

## SELECTED CHARTS

Figure 2: Daily Epidemic Curve of Confirmed Cases (WK9 – WK31)

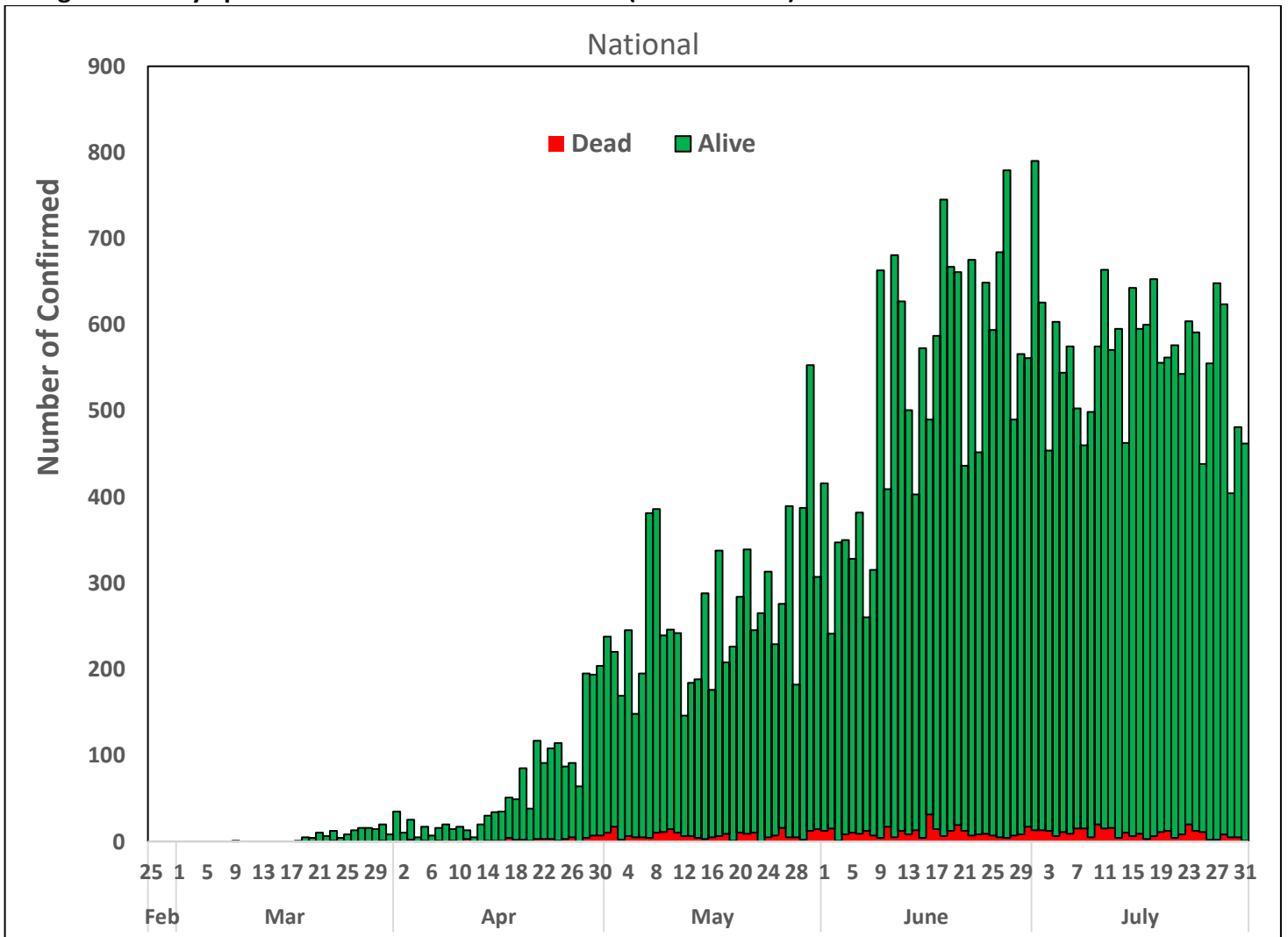
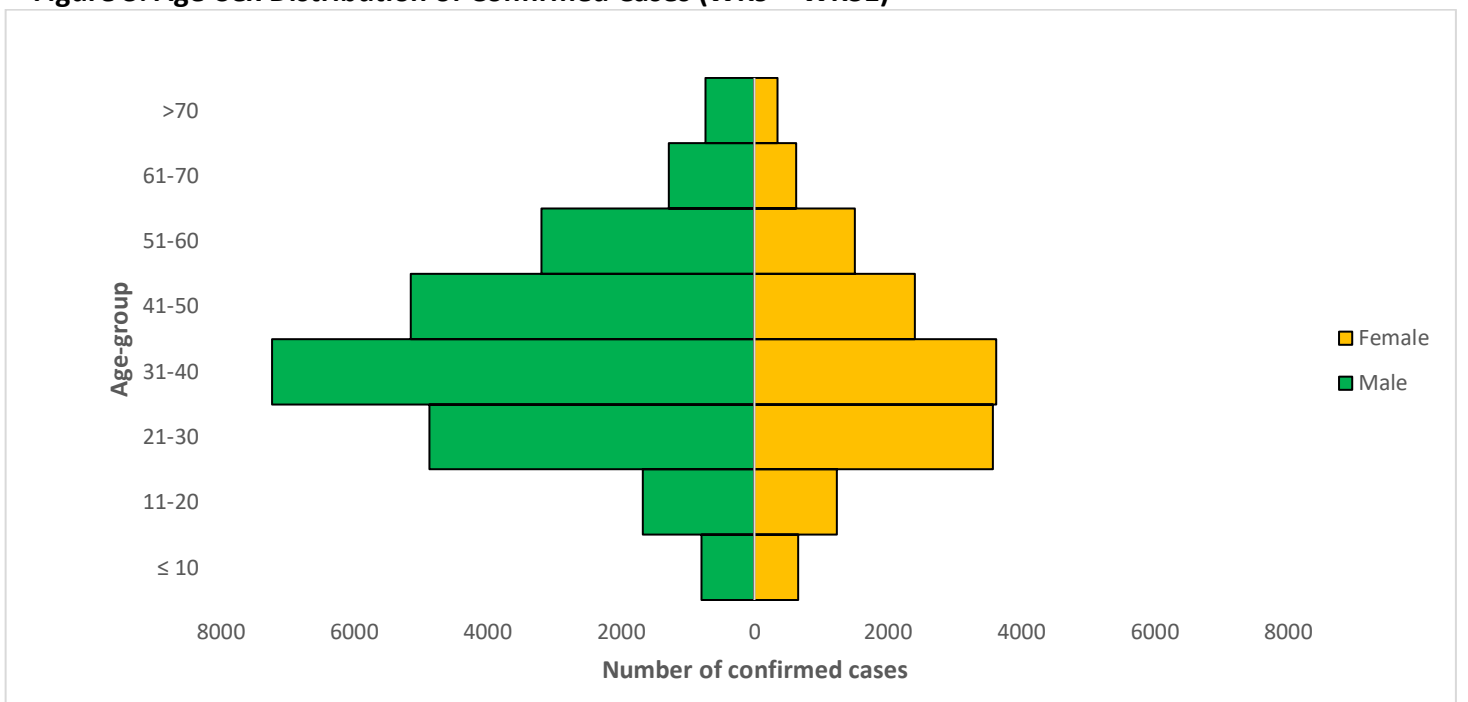


Figure 3: Age-Sex Distribution of Confirmed Cases (WK9 – WK31)



## PREPAREDNESS

Since the confirmation of the first case on 27<sup>th</sup> February 2020, the NCDC has released advisories and statements to help Nigerians and affected groups in particular to respond to the pandemic

- NCDC has launched an online course on [Infection, Prevention and Control \(IPC\) for COVID-19](#) NCDC eLearning platform
- Ahead of forthcoming elections in the country, NCDC has issued [Guidelines for Conducting Elections During the COVID-19 Outbreak in Nigeria](#).
- To protect our elders, and those with pre-existing medical conditions, NCDC has issued an [Advisory for Vulnerable Groups](#).
- NCDC has released [guidelines on the re-opening of places for worship](#).
- NCDC has released [Strategies to Improve Surveillance for COVID-19 Guidance for States](#)
- The Nigeria Police Force has released COVID-19 operational guidelines for the [Police and other Law Enforcement Agencies](#) in Nigeria
- Guidelines have been issued for the [safe transportation of remains of persons suspected or confirmed to have died of COVID-19](#)
- Information on diagnostics of the COVID-19 virus can be found in our [detailed FAQ document](#).
- To increase our testing capacity, NCDC has issued guidelines for the [integration of private labs](#).
- Guidelines for [businesses and employers](#) have been updated.
- NCDC has updated its [case definition](#) , [community case definition](#) and [case management guide](#).
- NCDC releases periodic [public health advisories](#) to Nigerians on the COVID-19 disease.
- To adhere to post-lockdown measures, NCDC has released an [advisory on the use of face masks](#), as well as information on the [Use of Cloth face masks](#) and [how to make your cloth face masks](#).
- NCDC has released guidelines for the [management of pregnant women and nursing mothers](#) during the pandemic.
- To address burials of loved ones who die from COVID-19, guidelines have been issued to advise on the [management of dead bodies](#).
- For health centres managing cases, the following documents have been released- a guideline for the [Rational Use of Personal Protective Equipment in the care of COVID-19 cases](#).
- As part of plans to increase the testing capacity of the country, the NCDC published a [National Strategy to Scale Up Access to Coronavirus Disease Testing in Nigeria](#) document.
- The Presidential Task Force has published policies and announcements on COVID-19 [available on the website of the Presidency](#) – including presidential addresses, task force updates and information on livelihood and economic support.

## RESPONSE

On 28<sup>th</sup> February 2020, a multi-sectoral Emergency Operations Centre (EOC) was activated at Level 3 – the highest emergency level in Nigeria –led by NCDC in close coordination with the State Public Health EOCs (PHEOC).

- **Received a total of 665 Persons of Interest (POIs)/returnees in the last two days: India (99), USA (294), Niger (158), Ghana (16) and Morocco (98)**
- **All POIs/returnees were received, screened and given the travellers kit on arrival at the Nnamdi Azikiwe International Airport Abuja (NAIA)**
- **All returnees were issued COVID-19 test appointment**
- **Trained staff of Yobe State Specialist Hospital laboratorians on COVID-19 testing**
- **Conducted a three-day IPC training for all health facilities healthcare workers in northern Calabar, Cross River State**
- **Supported the training of surveillance officers across the country on community engagement, managing stigma and discrimination**
- **Commenced Surveillance Outbreak and Response Management and Analysis System (SORMAS) roll out in 12 states starting with Borno and Jigawa state Roll out**
- **Supported the training of partner`s organisation 17 state coordinators on contact tracing and deployment of volunteers for surveillance activities**

- Concluded final phase of activation for COVID-19 testing using Abbott equipment in Yobe State
- Assessed the Holding Area facility in General hospital (GH), Ogoja
- Trained Patent Proprietary Medicine Vendors (PPMVs) in Jigawa State with support from partners
- Disseminated Salah COVID-19 Advisory
- Distribution of Personal Protective Equipment (PPE) commodities and Medicines to the North - Western states including the treatment centres, Teaching Hospitals and Primary Health care agencies in Kano, Kebbi, Kaduna, Katsina, Sokoto, Zamfara and Yobe
- All education materials can be found via [www.covid19.ncdc.gov.ng](http://www.covid19.ncdc.gov.ng)