

COVID-19 SITUATION REPORT

SITUATION REPORT 128

Sunday, 5TH July 2020



DATA AS REPORTED AND ACCURATE BY NCDC AS AT MIDNIGHT 5TH JULY 2020

HIGHLIGHTS

- Five hundred and forty-four (**544**) confirmed cases were reported in the last 24 hours from **19** states – Lagos (199), Ebonyi (65), Oyo (47), Ondo (46), Ogun (31), Edo (30), FCT (28), Katsina (25), Plateau (15), Bayelsa (11), Kaduna (10), Adamawa (10), Akwa Ibom (8), Gombe (7), Kano (4), Taraba (3), Abia (2), Rivers (2) and Ekiti(1).
- No new state recorded a confirmed COVID-19 case in the last 24 hours. The total number of states including FCT that have reported at least one confirmed case in Nigeria is still 36 (35 states + FCT)
- Two hundred and three (**203**) cases were discharged in the last 24 hours in **11** states – Edo (87), FCT (33), Lagos (23), Rivers (19), Akwa Ibom (17), Ebonyi (12), Kano (5), Gombe (3), Ondo (2), Bauchi (1) and Ogun (1).
- Eleven (**11**) deaths were recorded in the last 24 hours in **six** states – Oyo (5), Rivers (2), Adamawa (1), Akwa Ibom (1), Bayelsa (1) and Gombe (1)

SITUATION UPDATES

Total (New in the last 24 hours)

SAMPLES TESTED

152,952 (1831)

CONFIRMED CASES

28,711 (544)

AFFECTED STATES INCLUDING FCT

36 (0)

DISCHARGED CASES

11,665 (203)

CONFIRMED FATALITIES

645 (11) – 2.2% CFR

DEMOGRAPHICS

MALE – 18,916 (66%)

FEMALE – 9,795 (34%)

MOST AFFECTED AGE GROUP

31 - 40 (24%)

PERSONS OF INTEREST

10,649 (Total)

10,628 (99.8% - Exceeded Follow Up)

PROVENANCE

TRAVEL HISTORY – 456 (2%)

CONTACTS – 7,032 (24%)

UNKNOWN EXPOSURE – 21,223 (74%)

GLOBAL UPDATES

TOTAL NUMBER OF CASES

11,125,245 (528,204 deaths)

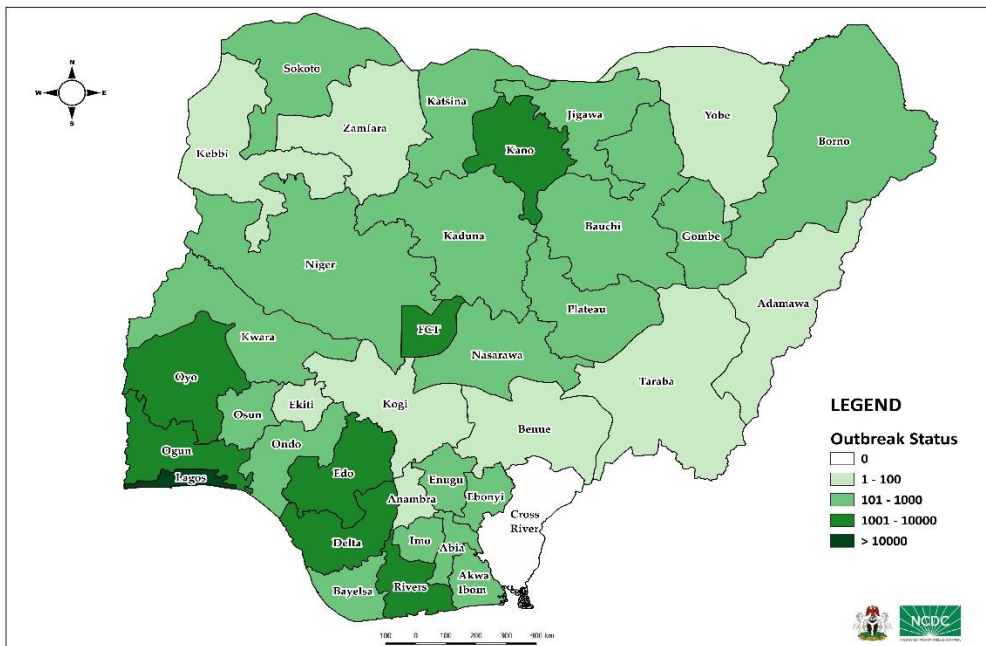
COUNTRIES & TERRITORIES

AFFECTED*

213

*Excluding the 2 International Convoys

Figure 1: Map of Nigeria showing 35 states and FCT affected by COVID-19



GENERAL FACT SHEET – DATA AS AT 5th JULY 2020

Table 1: States with reported laboratory-confirmed COVID-19 cases, recoveries, deaths and days since last reported case

STATES	CONFIRMED CASES		DISCHARGED CASES		DEATHS		TOTAL ACTIVE CASES	DAYS SINCE LAST REPORTED CASE
	CUMULATIVE	NEW	CUMULATIVE	NEW	CUMULATIVE	NEW		
Lagos	11,244	199	1,676	23	132	0	9,436	0
FCT	2,181	28	657	33	35	0	1,489	0
Oyo	1,513	47	809	0	19	5	685	0
Edo	1,383	30	805	87	47	0	531	0
Kano	1,268	4	1,029	5	52	0	187	0
Delta	1,227	0	407	0	25	0	795	1
Rivers	1,183	2	765	19	41	2	377	0
Ogun	1,005	31	637	1	21	0	347	0
Kaduna	865	10	570	0	12	0	283	0
Katsina	604	25	441	0	23	0	140	0
Borno	528	0	437	0	33	0	58	1
Gombe	520	7	376	3	20	1	124	0
Bauchi	516	0	472	1	12	0	32	2
Ebonyi	503	65	369	12	3	0	131	0
Ondo	456	46	117	2	20	0	319	0
Plateau	436	15	219	0	12	0	205	0
Abia	385	2	218	0	3	0	164	0
Enugu	372	0	215	0	9	0	148	1
Imo	352	0	50	0	6	0	296	4
Jigawa	318	0	308	0	9	0	1	5
Kwara	269	0	146	0	9	0	114	3
Bayelsa	245	11	127	0	16	1	102	0
Nasarawa	225	0	113	0	8	0	104	1
Osun	165	0	59	0	7	0	99	1
Sokoto	153	0	125	0	16	0	12	1
Niger	122	0	75	0	7	0	40	1
Akwa Ibom	112	8	71	17	3	1	38	0
Adamawa	99	10	52	0	7	1	40	0
Benue	97	0	33	0	5	0	59	2
Kebbi	84	0	58	0	7	0	19	1
Zamfara	76	0	71	0	5	0	0	48
Anambra	73	0	57	0	9	0	7	6
Yobe	61	0	48	0	8	0	5	4
Ekiti	44	1	40	0	2	0	2	0
Taraba	22	3	10	0	0	0	12	0
Kogi	5	0	3	0	2	0	0	2
Total	28,711	544	11,665	203	645	11	16,401	

States including FCT are arranged in descending order by number of total confirmed cases

SELECTED CHARTS

Figure 2: Daily Epidemic Curve of Confirmed Cases (WK9 – WK27)

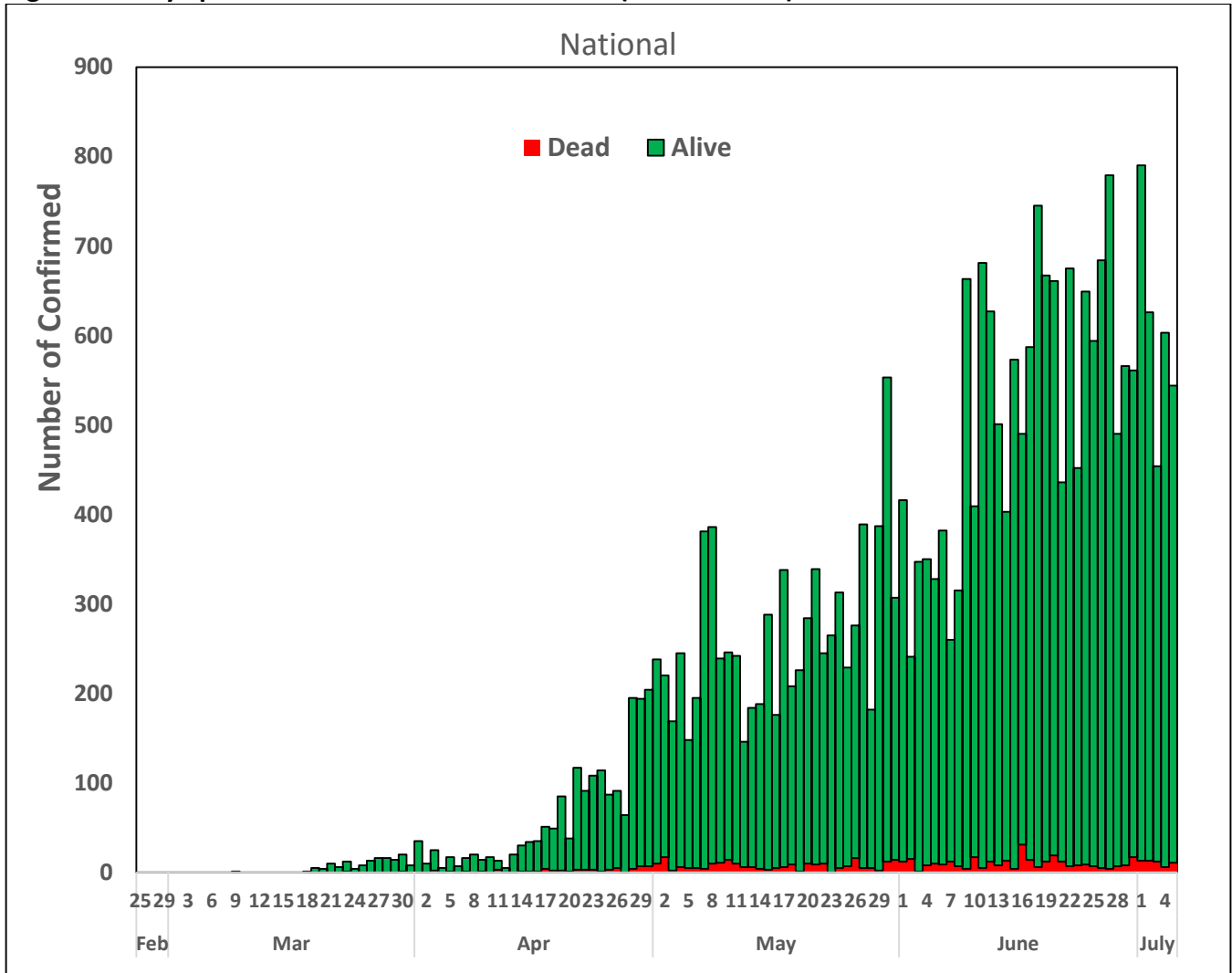
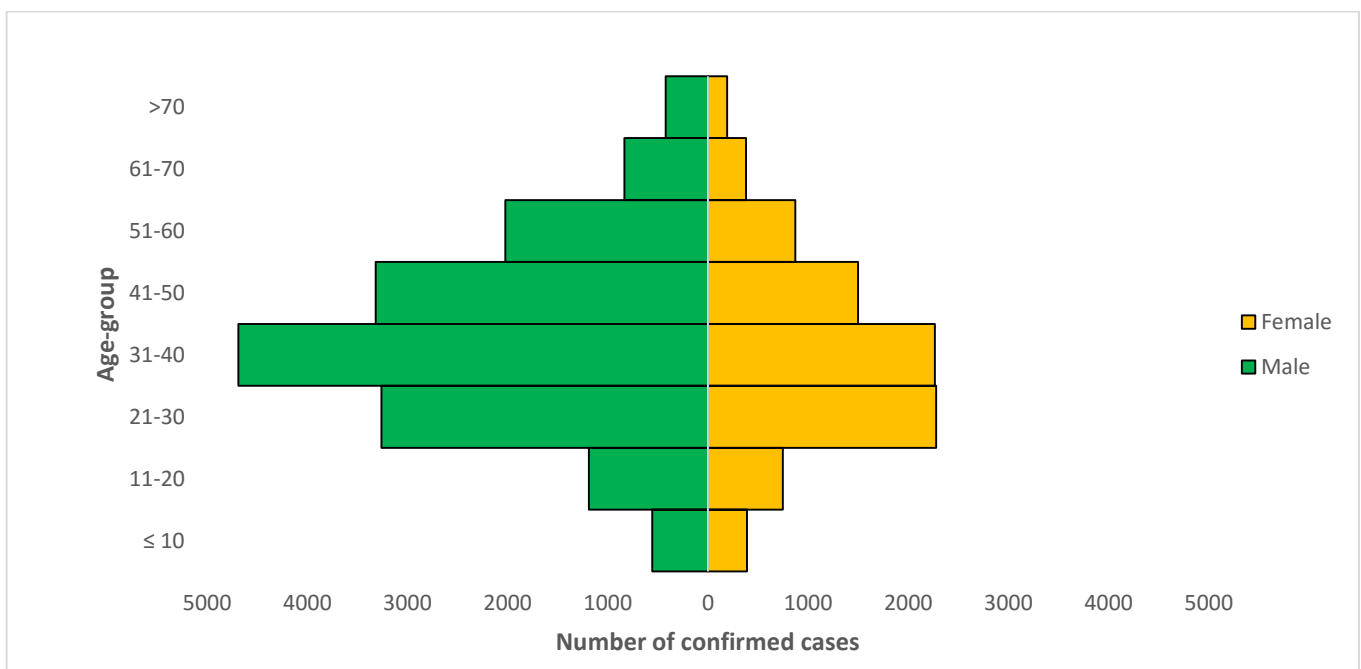


Figure 3: Age-Sex Distribution of Confirmed Cases (WK9 – WK27)



PREPAREDNESS

Since the confirmation of the first case on 27th February 2020, the NCDC has released advisories and statements to help Nigerians and affected groups in particular to respond to the pandemic

- NCDC has released [guidelines on the re-opening of places for worship](#).
- The Nigeria Police Force has released COVID-19 operational guidelines for the [Police and other Law Enforcement Agencies in Nigeria](#)
- NCDC and the Department of Hospital Services (Federal Ministry of Health) have updated the [case management guidelines](#) (version 3) with reviewed changes such as the discharge criteria and medication being used for the treatment of cases
- Guidelines have been issued for the [safe transportation of remains of persons suspected or confirmed to have died of COVID-19](#)
- Information on diagnostics of the COVID-19 virus can be found in our [detailed FAQ document](#).
- To increase our testing capacity, NCDC has issued guidelines for the [integration of private labs](#).
- Guidelines for [businesses and employers](#) have been updated.
- NCDC has updated its [case definition](#) , [community case definition](#) and [case management guide](#).
- NCDC releases periodic [public health advisories](#) to Nigerians on the COVID-19 disease.
- To adhere to post-lockdown measures, NCDC has released an [advisory on the use of face masks](#), as well as information on the [Use of Cloth face masks](#) and [how to make your cloth face masks](#).
- NCDC has released guidelines for the [management of pregnant women and nursing mothers](#) during the pandemic.
- To address burials of loved ones who die from COVID-19, guidelines have been issued to advise on the [management of dead bodies](#).
- For health centres managing cases, the following documents have been released- a guideline for the [Rational Use of Personal Protective Equipment in the care of COVID-19 cases](#).
- As part of plans to increase the testing capacity of the country, the NCDC published a [National Strategy to Scale Up Access to Coronavirus Disease Testing in Nigeria](#) document.
- The Presidential Task Force has published policies and announcements on COVID-19 [available on the website of the Presidency](#) – including presidential addresses, task force updates and information on livelihood and economic support.

RESPONSE

On 28th February 2020, a multi-sectoral Emergency Operations Centre (EOC) was activated at Level 3 – the highest emergency level in Nigeria –led by NCDC in close coordination with the State Public Health EOCs (PHEOC).

- **Ongoing review of Contact Management guidelines**
- **Received a total of 63 persons of Interest/returnees from Ghana 18, UK 9, India 36 and they were issued Covid-19 test appointments**
- **All returnees were received, screened and given NCDC travellers kit at the airport on arrival in Abuja**
- **Disseminated links for IPC training modules through various health care workers network**
- **Deployment of Personal Protective Equipment (PPE) commodities to the sample collection centres in FCT**
- **Ongoing processing of PPE requests from states and treatment centres**
- Coordinated the expansion of sample collection centres in FCT
- Weekly data quality checks and engagement with State Surveillance Officers (SSO) and state team
- Ongoing optimisation of the Shell Petroleum Development Company (SPDC) laboratory, Rivers State
- Conducted a refresher training on sample collection, packaging and transportation in FCT
- Launched E-Learning platform on Infection Prevention and Control (IPC) for healthcare workers
- Engaged with four states to reprioritise hotspots Local Government Areas (LGAs) for intervention
- All education materials can be found via www.covid19.ncdc.gov.ng