



SITUATION REPORT

Nigeria Centre For Disease Control (NCDC)

NCDC.GOV.NG

PLOT 800 EBITU UKIWE STREET, JABI ABUJA, NIGERIA TOLL FREE CALL: 6232 E:info@ncdc.gov.ng

@NCDCgov

TITLE:	UPDATE ON MPOX IN NIGERIA
SERIAL NUMBER:	31
EPI-WEEK:	47
DATE:	November 27, 2022

Table 1 – Key Indicators

Key Indicators	Number
Total confirmed cases in Epi Week 47, 2022	22
Total suspected cases from January 1 st to November 27 th , 2022 (Epi week 1 to 47)	1856
Total confirmed cases from January 1 st to November 27 th , 2022 (Epi week 1 to 47)	696
Total deaths from January 1 st to November 27 th , 2022 (Epi week 1 to 47)	7
Total deaths Sept 2017 - November 27 th , 2022	15
Total confirmed cases in 2017	88
Total confirmed cases in 2018	49
Total confirmed cases in 2019	47
Total confirmed cases in 2020	8
Total confirmed cases in 2021	34
Grand total confirmed cases (Sept 2017 – November 27 th , 2022)	922
Grand total suspected cases (Sept 2017 – November 27 th , 2022)	2368

- Sixty-four (64) new suspected cases were reported in Epi week 47, 2022 (21st to 27th November 2022) from fifteen (14) states and FCT - Zamfara (16), Delta (8), Lagos (7), Ogun (5), Ondo (5), Nasarawa (5), Kano (3), Bayelsa (3), Anambra (2), Adamawa (2), FCT (2), Akwa Ibom (1), Edo (1), Kebbi (1), Osun (1) and Plateau (1).
- Of sixty-four (64) suspected cases, twenty-two (22) new confirmed cases have been recorded in Epi week 47 from nine (9) states and FCT– Lagos (7), Delta (3), FCT (2), Ogun (2), Ondo (2), Anambra (1), Edo (1), Plateau (1), Osun (1) and Kano (1).
- From 1st January to 27th November 2022, Nigeria has recorded 1856 suspected cases with 696 confirmed cases (458 male, 238 female) from thirty-two (32) states and FCT – Lagos (171), Abia (53), Bayelsa (42), Imo (40), Ondo (35) Rivers (34), Ogun (33), Delta (29), Edo (25), Anambra (24), FCT (21), Kwara (17) Adamawa (16), Nasarawa (15), Plateau (15), Kaduna (14), Cross River (12), Akwa Ibom (11), Ebonyi (11), Benue (10), Oyo (10), Borno (10), Katsina (8), Taraba (7), Kano (7), Gombe (6), Kogi (5), Osun (5), Enugu (4), Kebbi (2), Niger (1), Bauchi (1) and Zamfara (1).
- Seven (7) associated deaths were recorded from 7 states in 2022 – Delta (1), Lagos (1), Ondo (1), Akwa Ibom (1), Kogi (1), Taraba (1), and Imo (1). **CFR 1.1%**



- Overall, since the re-emergence of Mpox in September 2017, 2368 suspected cases have been reported from 36 states and FCT in the country. Of these 2368 suspected cases, there have been 922 (39.0%) confirmed (611 male, 311 female) from 33 states and FCT - Lagos (201), Rivers (86), Bayelsa (85), Delta (58), Abia (56), Imo (48), Edo (35), Ondo (35), Ogun (34), FCT (27), Cross River (26), Anambra (26), Akwa Ibom (18), Plateau (18), Nasarawa (17), Kwara (17), Adamawa (16), Oyo (16), Kaduna (14), Benue (12), Ebonyi (12), Borno (10), Katsina (8), Enugu (8) Taraba (7), Kano (7), Gombe (6), Kogi (5), Osun (5), Ekiti (2), Niger (2), Kebbi (2), Bauchi (1) and Zamfara (1).
- Fifteen (15) deaths have been recorded since September 2017 (CFR= 1.6%) in nine (9) states - Lagos (3), Edo (2), Imo (2), Cross River (1), FCT (1), Rivers (1), Ondo (1) Delta (1), Akwa Ibom (1), Taraba (1) and Kogi (1).

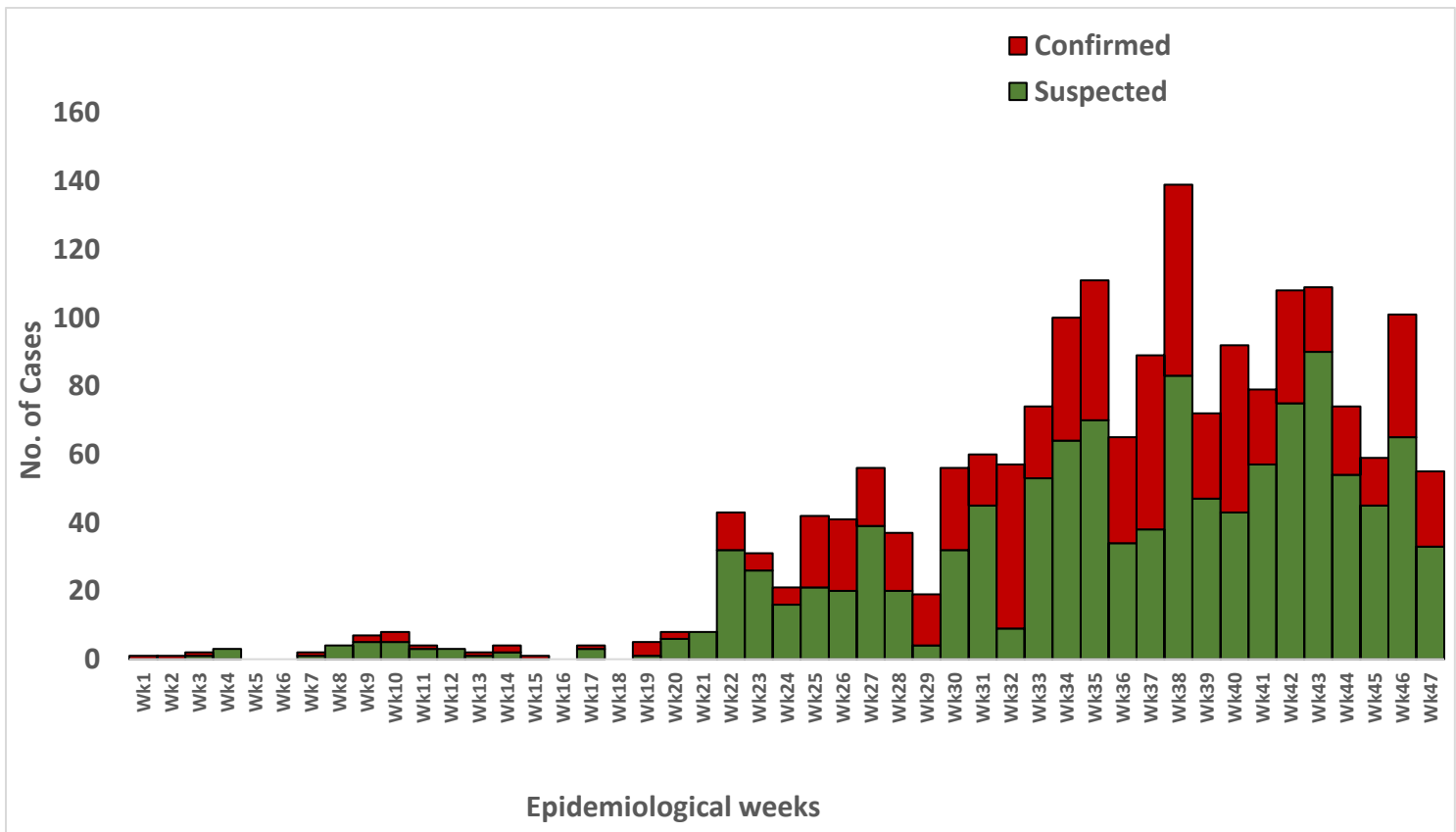


Figure 1: Epidemic Curve of Suspected & Confirmed Mpox Cases Jan. 2022 till date

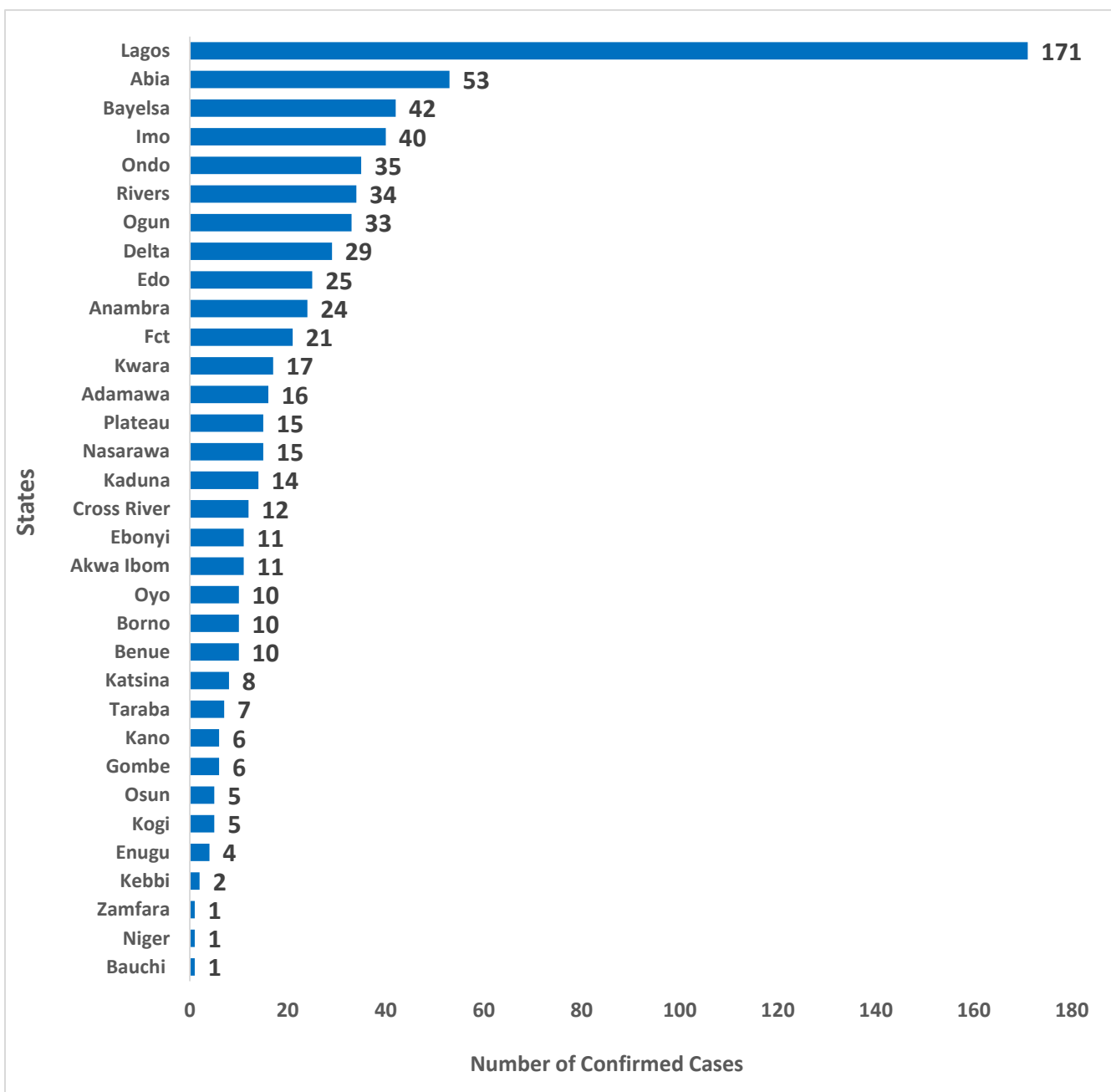


Figure 2: Bar chart Showing confirmed Mpox cases by state from January 1st – 27th November 2022

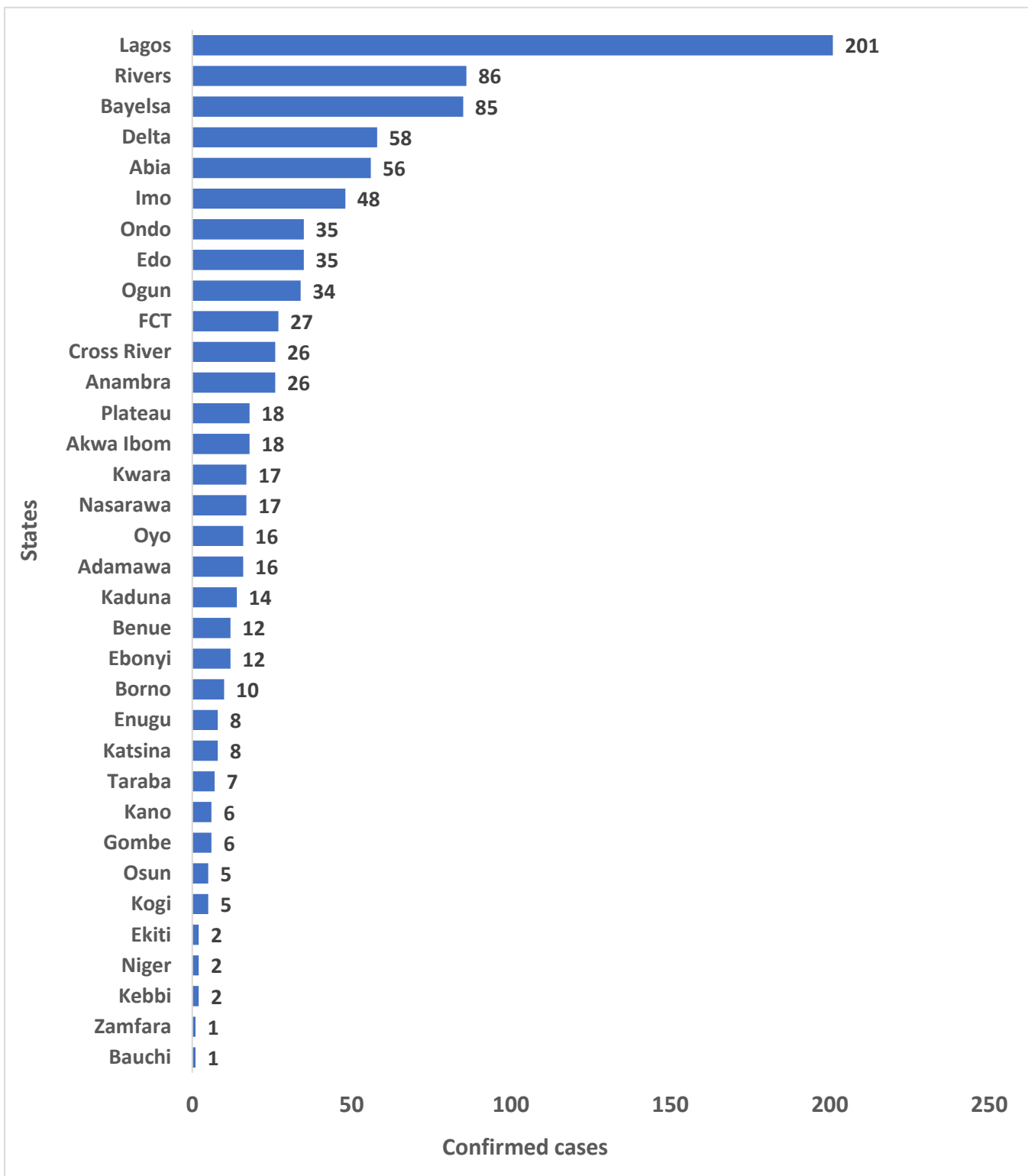


Figure 3: Bar chart Showing confirmed Mpox cases by state, September 2017 – 27th November 2022

Table 2: Nigeria confirmed Mpox cases by state, September 2017 – 27th November 2022

S/N	State	2017	2018	2019	2020	2021	2022	Total
1	Lagos	4	1	15	4	6	171	201
2	Rivers	25	14	7	1	5	34	86
3	Bayelsa	19	11	7	0	6	42	85
4	Delta	3	6	10	1	9	29	58
5	Abia	1	2	0	0	0	53	56
6	Imo	5	2	1	0	0	40	48
7	Edo	4	1	1	0	4	25	35
8	Ondo	0	0	0	0	0	35	35
9	Ogun	0	0	0	0	1	33	34
10	FCT	5	0	0	0	1	21	27
11	Anambra	0	1	1	0	0	24	26
12	Cross River	9	3	1	0	1	12	26
13	Akwa Ibom	6	0	1	0	0	11	18
14	Nasarawa	1	1	0	0	0	15	17
15	Adamawa	0	0	0	0	0	16	16
16	Plateau	0	2	0	1	0	15	18
17	Oyo	1	3	2	0	0	10	16
18	Kaduna	0	0	0	0	0	14	14
19	Ebonyi	0	0	0	1	0	11	12
20	Benue	2	0	0	0	0	10	12
21	Borno	0	0	0	0	0	10	10
22	Kwara	0	0	0	0	0	17	17
23	Katsina	0	0	0	0	0	8	8
24	Taraba	0	0	0	0	0	7	7
25	Enugu	1	2	1	0	0	4	8
26	Gombe	0	0	0	0	0	6	6
27	Kano	0	0	0	0	0	7	7
28	Kogi	0	0	0	0	0	5	5
29	Osun	0	0	0	0	0	5	5
30	Kebbi	0	0	0	0	0	2	2
31	Niger	0	0	0	0	1	1	2
32	Ekiti	2	0	0	0	0	0	2
33	Bauchi	0	0	0	0	0	1	1
34	Zamfara	0	0	0	0	0	1	1
	Grand Total	88	49	47	8	34	696	922

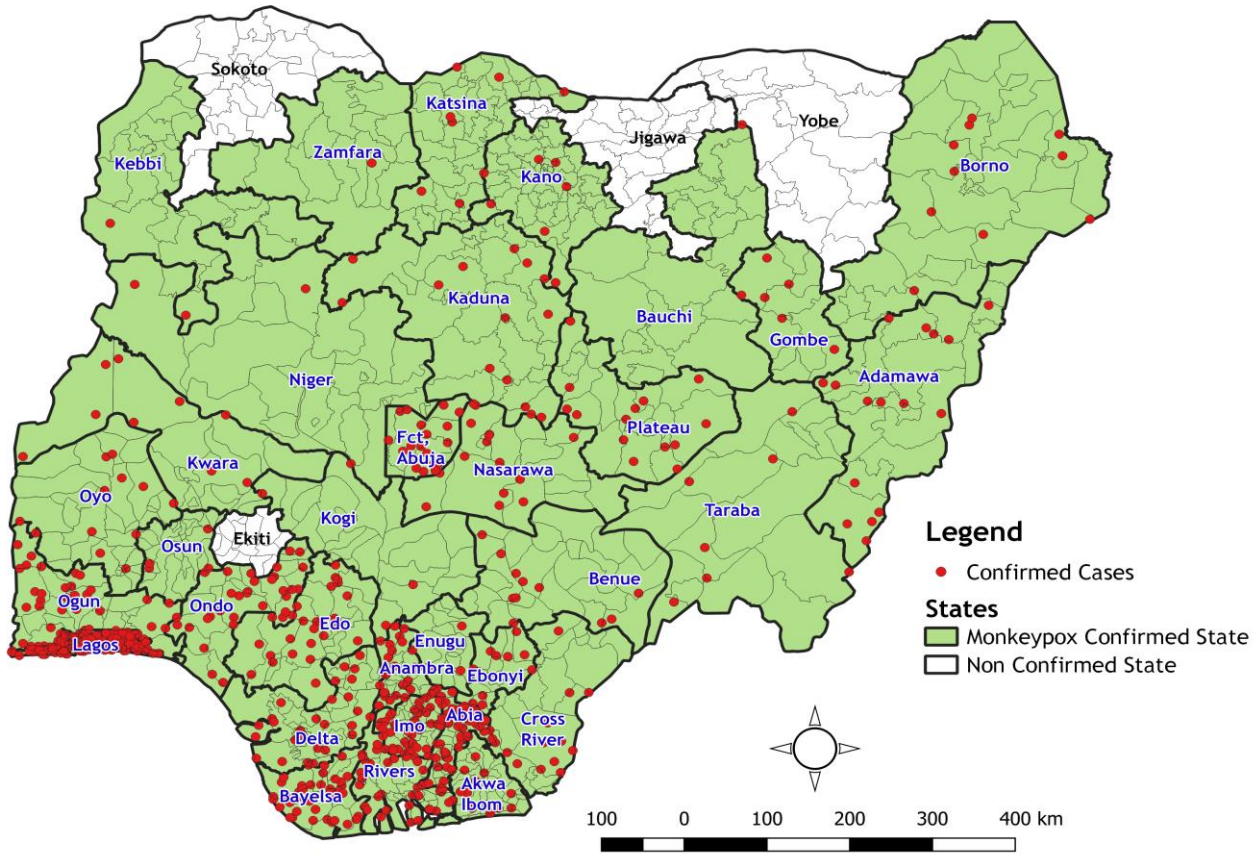


Figure 4: Map of Nigeria Showing States with Confirmed Mpox Cases from January 2022 till date (32 states and FCT)

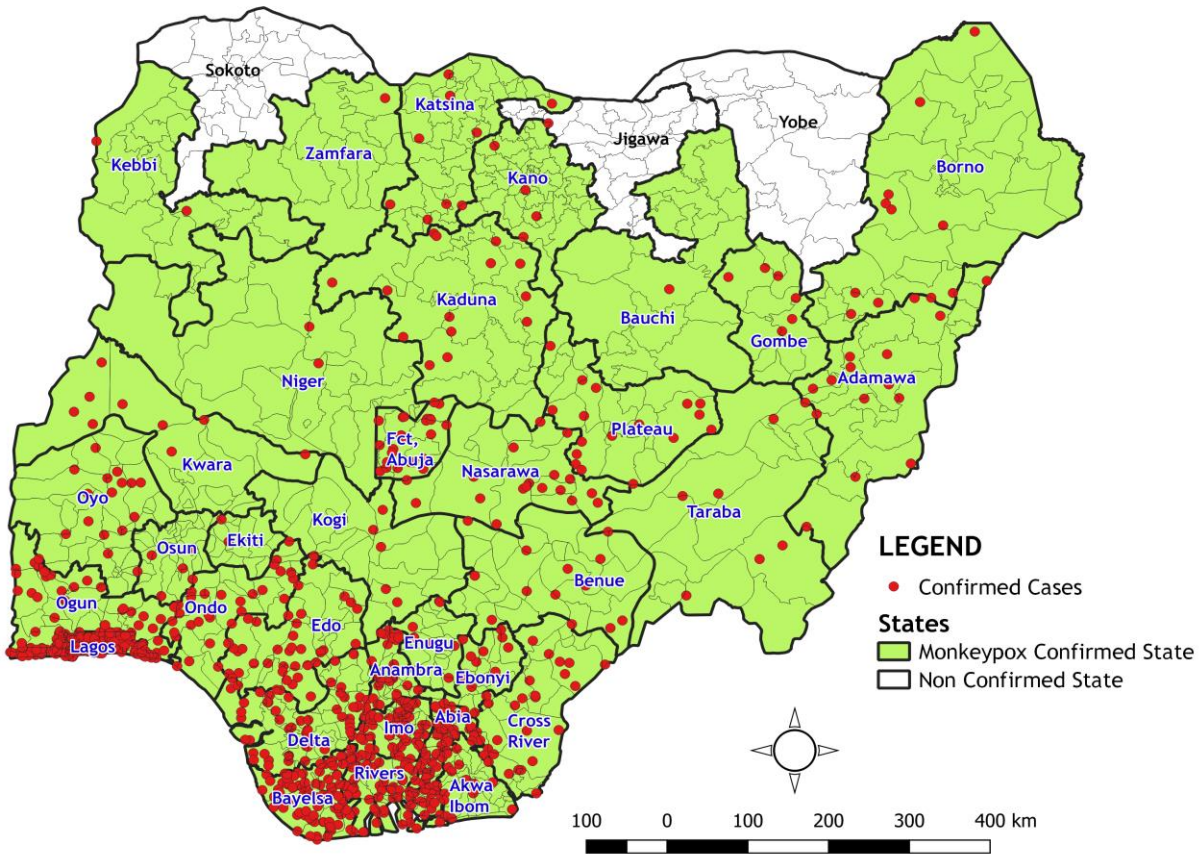


Figure 5: Map of Nigeria Showing States with Confirmed Mpox Cases from September 2017 till date (33 states and FCT)

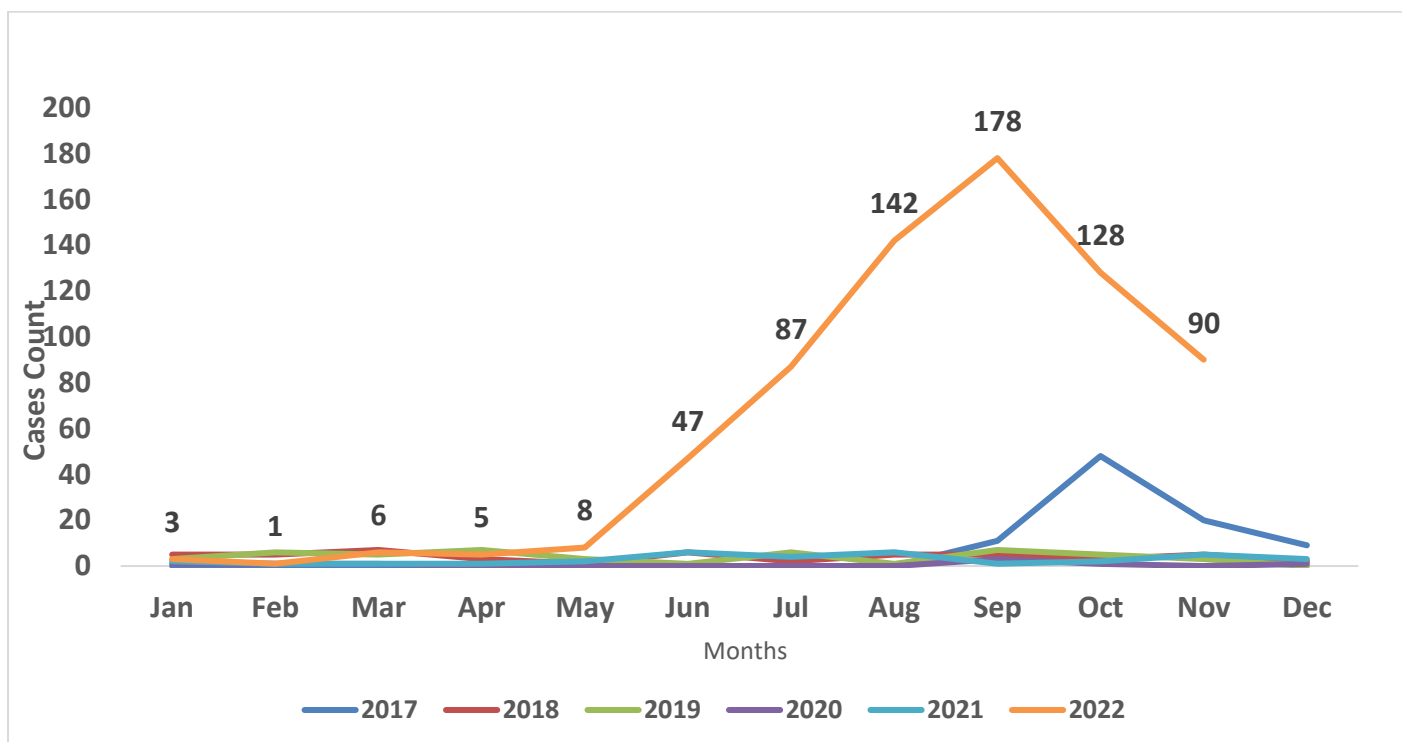


Figure 6: Nigeria confirmed Mpox cases by the year of incidence- September 2017 to 27th November 2022

Table 3: Age distribution of confirmed Mpox cases September 2017 – 27th November 2022

Age Group	2017	2018	2019	2020	2021	2022	Total
0-10 Years	7	5	1	0	1	114	128
11-20 Years	12	4	1	0	4	109	130
21-30 Years	34	13	13	4	10	171	245
31- 40 Years	26	17	22	4	13	190	272
41-50 Years	9	10	9	0	5	81	114
51-60 Years	0	0	1	0	1	31	33
Total	88	49	47	8	34	696	922

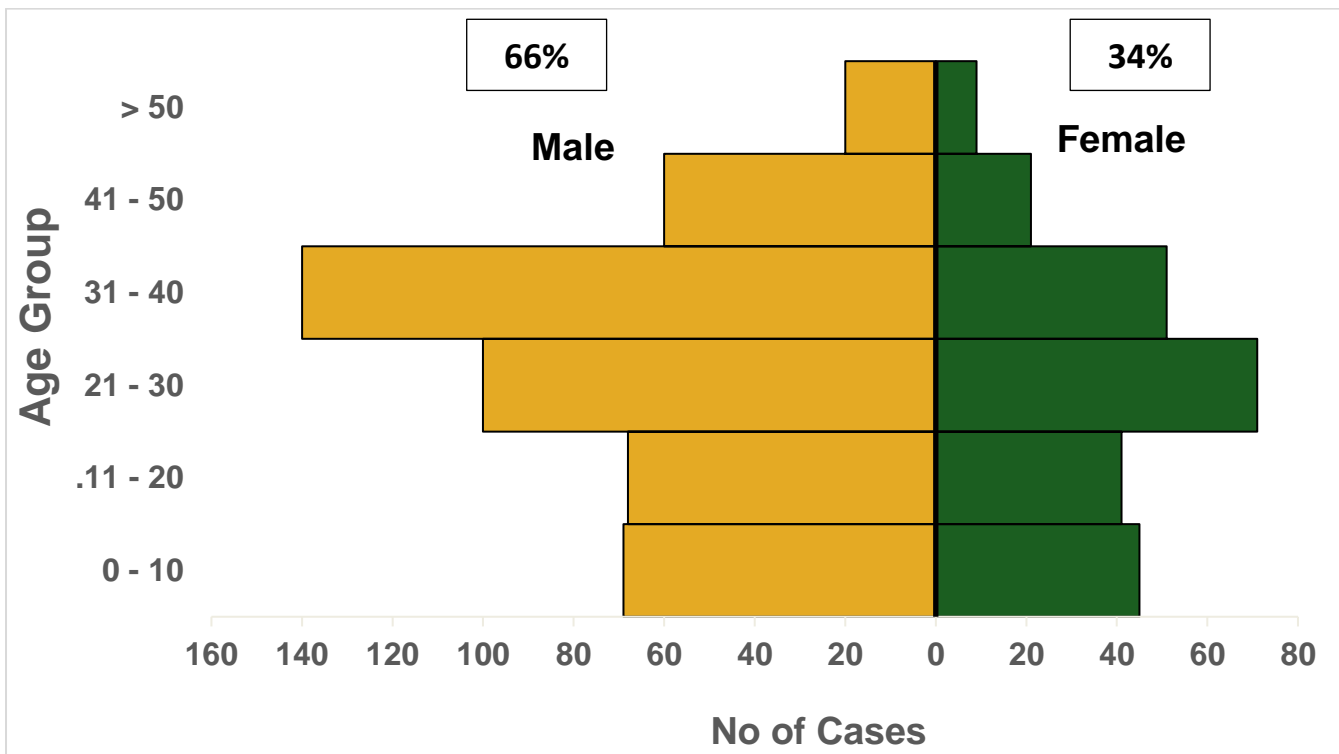


Figure 7: Age and sex distribution of Nigeria confirmed Mpox cases January 1st –27th November 2022

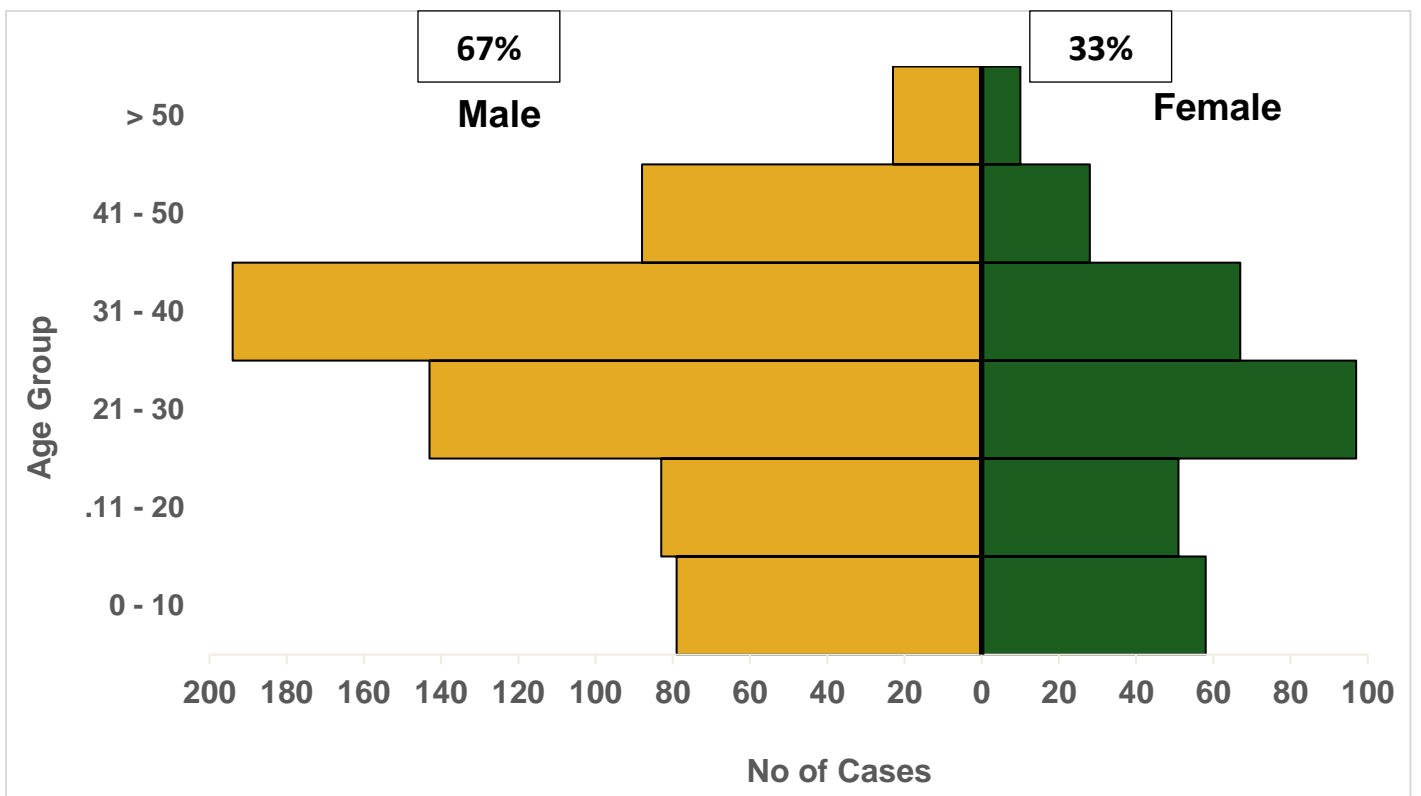


Figure 8: Age and sex distribution of Nigeria confirmed Mpox cases September 2017 – 27th November 2022

Response activities

Pillar	Activities to date	Next steps
Coordination	<ul style="list-style-type: none"> Supported the daily activities of the activated Emergency Operations Centre (EOC) 	<ul style="list-style-type: none"> Coordinate ongoing national Mpox response through the multi-agency Emergency Operation Centre at the NCDC
Risk communication and IPC	<ul style="list-style-type: none"> Tracked, monitored and responded to rumours and misinformation of Mpox in Nigeria Developed a one-stop ODK platform for the investigation of all HCW infections for priority diseases Developed the first draft of the updated Infection Prevention and Control IEC materials 	<ul style="list-style-type: none"> Continue monitoring and analysis of Mpox infodemics Review IPC IEC material drafts Print isolation precaution signages for healthcare facilities
Surveillance	<ul style="list-style-type: none"> Provided off-site support to states on case identification, reporting and response Harmonised and analysed data for the development of weekly sitrep Updated and validated data in SORMAS 	<ul style="list-style-type: none"> Follow up with SORMAS SSOs and States on completeness of data on both CIFs and SORMAS platform
Case management	<ul style="list-style-type: none"> Reviewed clinical features for Epidemic weeks 45 - 47 Followed up on the care provided to confirmed cases by states' Mpox case managers 	<ul style="list-style-type: none"> Planned adaptation of WHO Mpox case management interim guidelines
Laboratory	<ul style="list-style-type: none"> Mpox and VZV reagents have been procured and successfully validated and sent to National Reference and sh Central Public Health Laboratories 	<ul style="list-style-type: none"> Commence Mpox sequencing following momentary equipment downtime Planned training of identified states on appropriate sample collection techniques, sample packaging, and transport Planned virtual engagement with some states (Zamfara, Imo) due to high numbers of inconclusive results

Notes on this report

Data Source

Information for this disease was case-based data retrieved from the National Mpox Emergency Operations Centre.

Case definitions

Suspected case

...PROTECTING THE HEALTH OF NIGERIANS



- An acute illness with fever $>38.3^{\circ}\text{C}$, intense headache, lymphadenopathy, back pain, myalgia, and intense asthenia followed one to three days later by a progressively developing rash often beginning on the face (most dense) and then spreading elsewhere on the body, including soles of feet and palms of the hand

Probable case

- A case that meets the clinical case definition is not laboratory-confirmed but has an epidemiological link to a confirmed case

Confirmed case

- A clinically compatible case that is laboratory confirmed

Contact

- Any person who has been in direct or indirect contact with a confirmed case since the onset of symptoms, i.e., contact with skin lesions, oral secretions, urine, stool, vomitus, blood, sexual contact, sharing a common space (anyone who has been in proximity with or without physical contact with a confirmed case)

Calculations

- Case Fatality Rate (CFR) for this disease is reported for confirmed cases only