

# COVID-19 SITUATION REPORT

## SITUATION REPORT 158

Tuesday, 4<sup>th</sup> August 2020



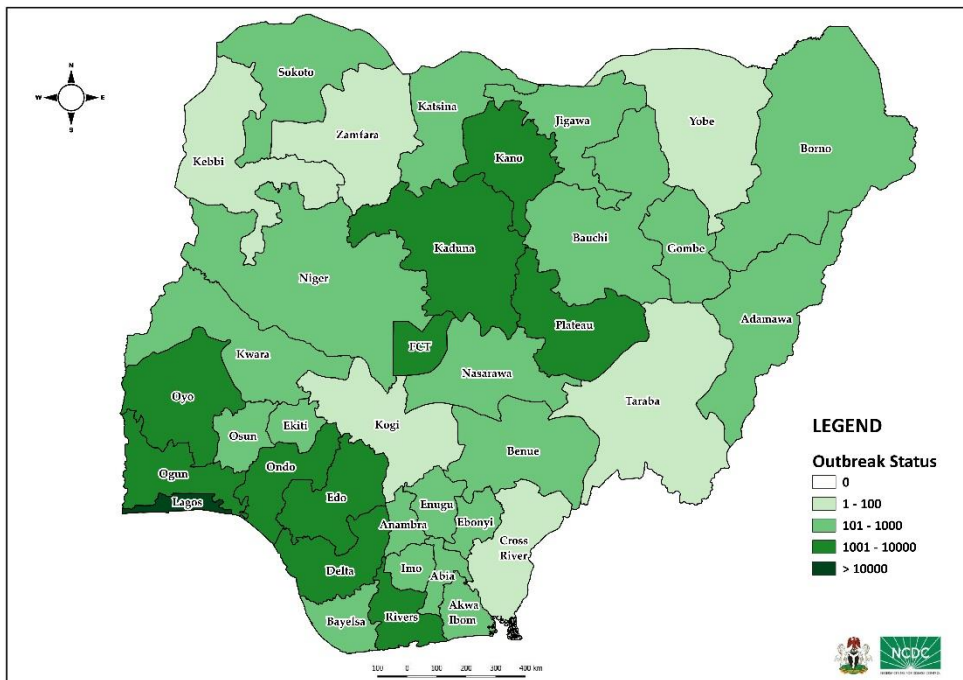
DATA AS REPORTED AND ACCURATE BY NCDC AS AT MIDNIGHT 4<sup>th</sup> AUGUST 2020

### HIGHLIGHTS

- Three hundred and four (**304**) confirmed cases were reported in the last 24 hours from **19** states – FCT (90), Lagos (59), Ondo (39), Taraba (18), Rivers (17), Borno (15), Adamawa (12), Oyo (11), Delta (9), Edo (6), Bauchi (4), Kwara (4), Ogun (4), Osun (4), Bayelsa (3), Plateau (3), Niger (3), Nasarawa (2) and Kano (1).
- Two hundred and forty-two (**242**) cases were discharged in the last 24 hours in **14** states – Plateau (63), Taraba (44), Kaduna (40), Edo (33), Rivers (22), Kwara (15), Ogun (11), Osun (6), Oyo (2), Bayelsa (2), FCT (1), Ondo (1), Bauchi (1) and Ekiti (1)
- Fourteen (**14**) deaths were recorded in the last 24 hours in **seven** states – Taraba (4), Edo (3), FCT (2), Ondo (2), Adamawa (1), Osun (1) and Plateau (1).
- All **36** states in Nigeria, and the FCT, have reported a confirmed case.

### STATE OF THE NATION

Figure 1: Map of Nigeria showing 36 states and FCT affected by COVID-19



### SITUATION UPDATES

Total (New in the last 24 hours)

SAMPLES TESTED

**304,221 (15,088)<sup>1</sup>**

CONFIRMED CASES

**44,433 (304)**

AFFECTED STATES INCLUDING FCT

**37**

DISCHARGED CASES

**31,851 (242)**

CONFIRMED FATALITIES

**910 (14) – 2.0% CFR**

DEMOGRAPHICS

MALE – 28,687 (65%)

FEMALE – 15,746 (35%)

MOST AFFECTED AGE GROUP

31 - 40 (25%)

PERSONS OF INTEREST

**11,241 (Total)**

**11,127 (99% - Exceeded Follow Up)**

PROVENANCE

TRAVEL HISTORY – 847 (2%)

CONTACTS – 10,930 (25%)

UNKNOWN EXPOSURE – 32,656 (73%)

GLOBAL UPDATES

TOTAL NUMBER OF CASES

**18,142,718 (691,013 deaths)**

COUNTRIES & TERRITORIES AFFECTED\*

**214**

\*Excluding the 2 International Conveyance

<sup>1</sup>Includes backlog in the last one week

## GENERAL FACT SHEET – DATA AS AT 4<sup>th</sup> AUGUST 2020

Table 1: States with reported laboratory-confirmed COVID-19 cases, recoveries, deaths, samples tested and days since last reported case

STATES	CONFIRMED CASES		DISCHARGED CASES		DEATHS		TOTAL ACTIVE CASES	TOTAL SAMPLES TESTED	DAYS SINCE LAST REPORTED CASE
	TOTAL	NEW	TOTAL	NEW	TOTAL	NEW			
Lagos	15,414	59	13,106	0	192	0	2,116	77,242	0
FCT	4,087	90	1,189	1	44	2	2,854	33,355	0
Oyo	2,782	11	1,398	2	28	0	1,356	17,279	0
Edo	2,317	6	2,017	33	90	3	210	12,378	0
Rivers	1,859	17	1,503	22	53	0	303	9,267	0
Kano	1,598	1	1,270	0	53	0	275	37,250	0
Delta	1,529	9	1,359	0	43	0	127	7,545	0
Kaduna	1,498	0	1,288	40	12	0	198	11,902	1
Ogun	1,411	4	1,187	11	24	0	200	8,811	0
Ondo	1,243	39	649	1	27	2	567	5,041	0
Plateau	1,243	3	598	63	20	1	625	14,965	0
Enugu	846	0	485	0	18	0	343	2,506	1
Ebonyi	808	0	733	0	26	0	49	4,622	2
Kwara	790	4	273	15	21	0	496	3,864	0
Katsina	746	0	457	0	24	0	265	8,129	1
Borno	628	15	569	0	35	0	24	8,402	0
Gombe	620	0	529	0	23	0	68	8,785	1
Abia	602	0	471	0	5	0	126	2,458	1
Osun	584	4	300	6	13	1	271	2,761	0
Bauchi	565	4	521	1	13	0	31	5,832	0
Imo	469	0	139	0	9	0	321	2,693	3
Benue	356	0	64	0	7	0	285	2,127	2
Bayelsa	342	3	286	2	21	0	35	928	0
Nasarawa	341	2	223	0	8	0	110	2,495	2
Jigawa	322	0	308	0	11	0	3	2,838	19
Niger	226	3	133	0	12	0	81	1,630	0
Akwa Ibom	221	0	150	0	7	0	64	1,291	9
Adamawa	176	12	85	0	11	1	80	1,576	0
Sokoto	154	0	137	0	16	0	1	979	10
Ekiti	152	0	68	1	2	0	82	2,153	2
Anambra	135	0	75	0	12	0	48	734	6
Kebbi	90	0	79	0	7	0	4	795	14
Zamfara	77	0	71	0	5	0	1	319	17
Taraba	72	18	55	44	4	4	13	644	0
Yobe	67	0	54	0	8	0	5	195	5
Cross River	58	0	19	0	4	0	35	333	2
Kogi	5	0	3	0	2	0	0	97	32
<b>Total</b>	<b>44,433</b>	<b>304</b>	<b>31,851</b>	<b>242</b>	<b>910</b>	<b>14</b>	<b>11,672</b>	<b>304,221</b>	

States, including FCT, are arranged in descending order by number of total confirmed cases and then alphabetical order

# SELECTED CHARTS

Figure 2: Daily Epidemic Curve of Confirmed Cases (WK9 – WK32)

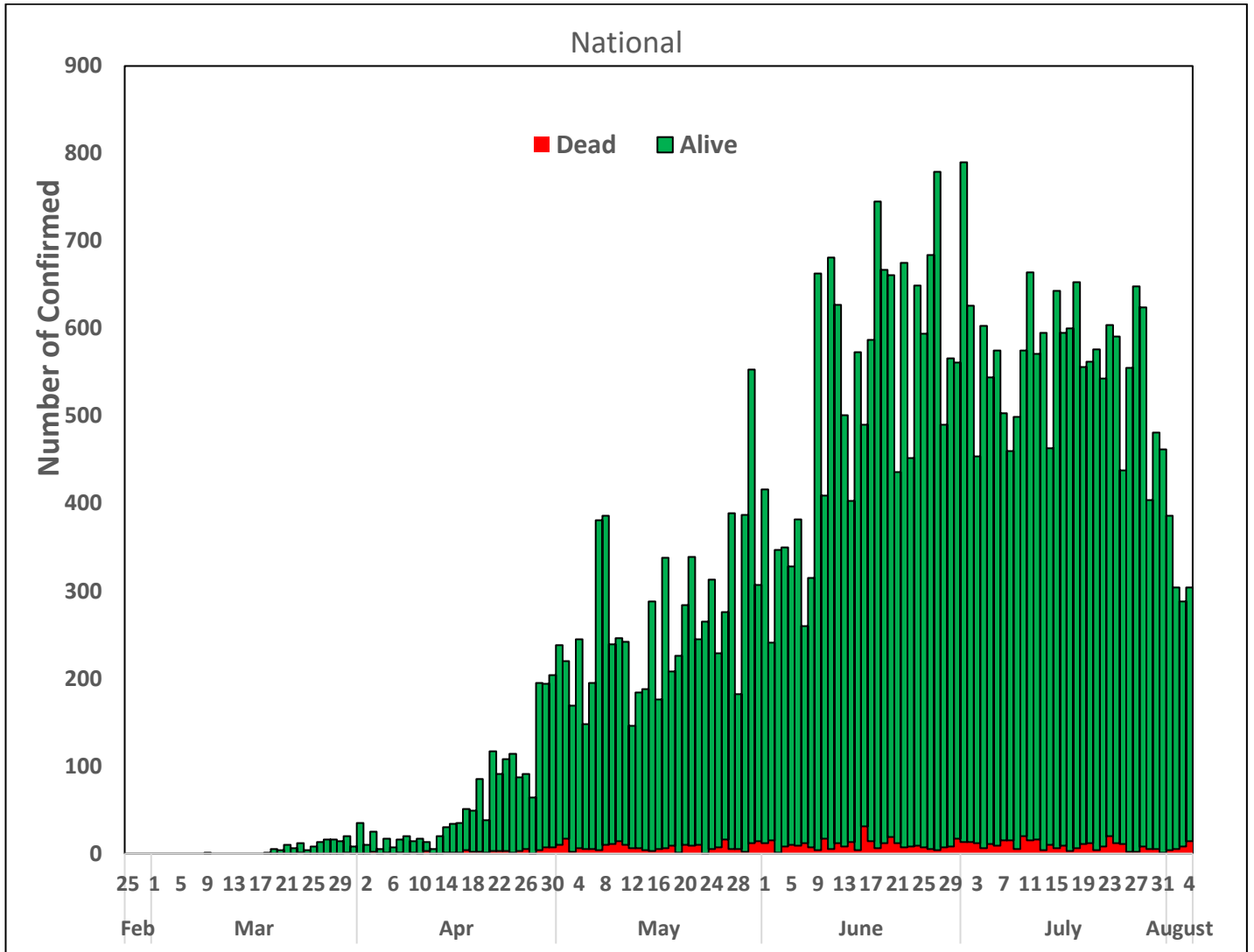
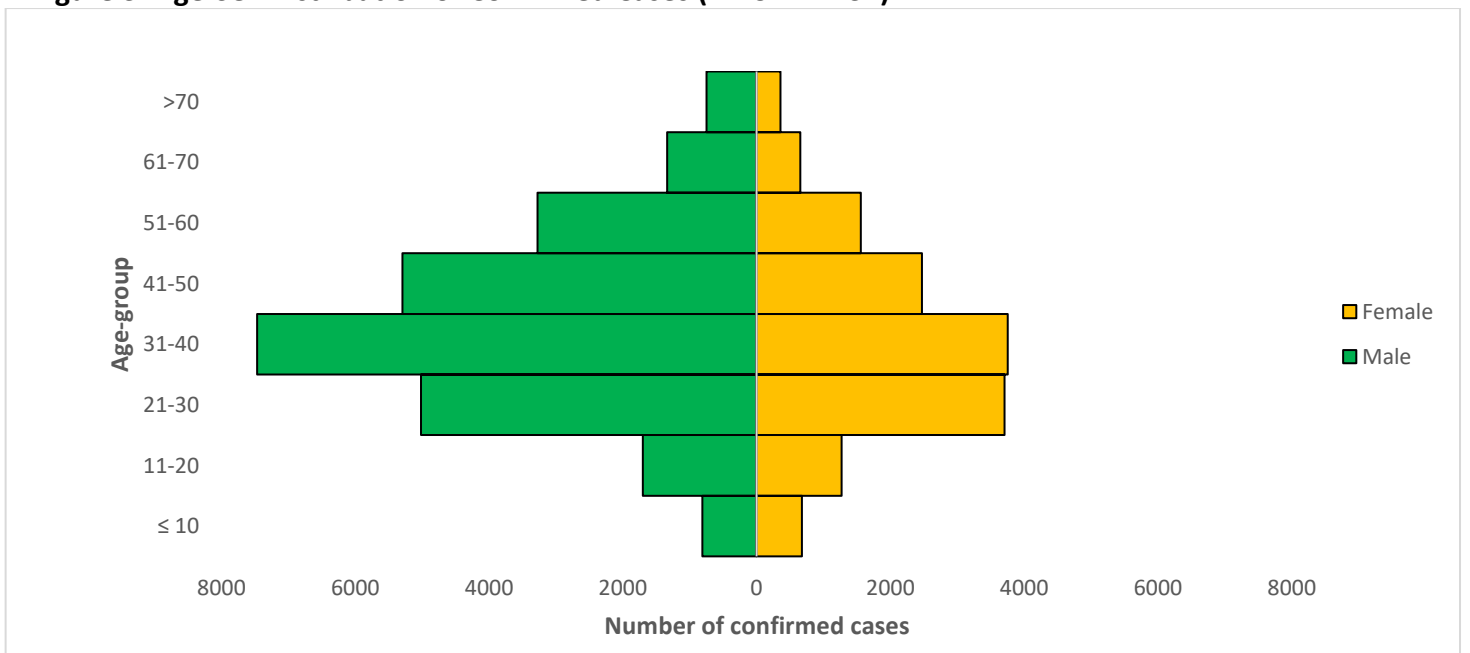


Figure 3: Age-Sex Distribution of Confirmed Cases (WK9 – WK32)



## PREPAREDNESS

Since the confirmation of the first case on 27<sup>th</sup> February 2020, the NCDC has released advisories and statements to help Nigerians and affected groups in particular to respond to the pandemic

- NCDC has launched an online course on [Infection, Prevention and Control \(IPC\) for COVID-19](#) NCDC eLearning platform
- Ahead of forthcoming elections in the country, NCDC has issued [Guidelines for Conducting Elections During the COVID-19 Outbreak in Nigeria](#).
- To protect our elders, and those with pre-existing medical conditions, NCDC has issued an [Advisory for Vulnerable Groups](#).
- NCDC has released [guidelines on the re-opening of places for worship](#).
- NCDC has released [Strategies to Improve Surveillance for COVID-19 Guidance for States](#)
- The Nigeria Police Force has released COVID-19 operational guidelines for the [Police and other Law Enforcement Agencies](#) in Nigeria
- Guidelines have been issued for the [safe transportation of remains of persons suspected or confirmed to have died of COVID-19](#)
- Information on diagnostics of the COVID-19 virus can be found in our [detailed FAQ document](#).
- To increase our testing capacity, NCDC has issued guidelines for the [integration of private labs](#).
- Guidelines for [businesses and employers](#) have been updated.
- NCDC has updated its [case definition](#) , [community case definition](#) and [case management guide](#).
- NCDC releases periodic [public health advisories](#) to Nigerians on the COVID-19 disease.
- To adhere to post-lockdown measures, NCDC has released an [advisory on the use of face masks](#), as well as information on the [Use of Cloth face masks](#) and [how to make your cloth face masks](#).
- NCDC has released guidelines for the [management of pregnant women and nursing mothers](#) during the pandemic.
- To address burials of loved ones who die from COVID-19, guidelines have been issued to advise on the [management of dead bodies](#).
- For health centres managing cases, the following documents have been released- a guideline for the [Rational Use of Personal Protective Equipment in the care of COVID-19 cases](#).
- As part of plans to increase the testing capacity of the country, the NCDC published a [National Strategy to Scale Up Access to Coronavirus Disease Testing in Nigeria](#) document.
- The Presidential Task Force has published policies and announcements on COVID-19 [available on the website of the Presidency](#) – including presidential addresses, task force updates and information on livelihood and economic support.

## RESPONSE

On 28<sup>th</sup> February 2020, a multi-sectoral Emergency Operations Centre (EOC) was activated at Level 3 – the highest emergency level in Nigeria –led by NCDC in close coordination with the State Public Health EOCs (PHEOC).

- **Intensified follow-up and support for states’ step down training on active case search and contact tracing in communities and health facilities**
- **Activated a total of 61 COVID-19 testing laboratories across states**
- **Conducted training of 27 healthcare workers at Federal College of Education (FCE), Osiele Abeokuta, Ogun State**
- **Reviewed learning materials for children on disease prevention and health promotion**
- Supported the orientation meeting of Epidemiologists engaged to oversee community volunteers for contact tracing and active case search in 10 states with 20 community volunteers each per state supported by partners
- Provided supportive supervision for decontamination of the private clinic where a confirmed case was managed in Calabar, Cross River State
- Facilitated interviews for resource persons to provide appropriate narratives on hydroxychloroquine situation

- Identified relevant resource persons to feature in the upcoming Human Rights Radio interview series supported by the Presidential Task Force
- All education materials can be found via [www.covid19.ncdc.gov.ng](http://www.covid19.ncdc.gov.ng)