

COVID-19 SITUATION REPORT

SITUATION REPORT 142

Sunday, 19th July 2020



DATA AS REPORTED AND ACCURATE BY NCDC AS AT MIDNIGHT 19th JULY 2020

HIGHLIGHTS

- Five hundred and fifty-six (**556**) confirmed cases were reported in the last 24 hours from **18** states – Edo (104), Lagos (97), FCT (70), Benue (66), Oyo (61), Kaduna (38), Plateau (28), Osun (19), Akwa Ibom (14), Katsina (13), Ondo (13), Rivers (13), Ogun (6), Kano (5), Nasarawa (4), Ekiti (2), Gombe (2) and Borno(1).
- One hundred and sixty-seven (**167**) cases were discharged in the last 24 hours in **13** states – Oyo (40), Kaduna (28), Kano (25), Ogun (16), Edo (12), Gombe (12), Borno (7), FCT (7), Lagos (6), Plateau (6), Rivers (4), Adamawa (2) and Bayelsa (2).
- Eleven (**11**) deaths were recorded in the last 24 hours in **four** states – Edo (6), Ebonyi (2), Plateau (2) and Adamawa (1).
- All **36** states in Nigeria, and the FCT, have reported a confirmed case.

STATE OF THE NATION

Figure 1: Map of Nigeria showing 36 states and FCT affected by COVID-19

SITUATION UPDATES

Total (New in the last 24 hours)

SAMPLES TESTED

214,228 (2,027)

CONFIRMED CASES

36,663 (556)

AFFECTED STATES INCLUDING FCT

37

DISCHARGED CASES

15,105 (167)

CONFIRMED FATALITIES

789 (11) – 2.2% CFR

DEMOGRAPHICS

MALE – 23,698 (65%)

FEMALE – 12,965 (35%)

MOST AFFECTED AGE GROUP

31 - 40 (25%)

PERSONS OF INTEREST

10,987 (Total)

10,899 (99.2% - Exceeded Follow Up)

PROVENANCE

TRAVEL HISTORY – 628 (2%)

CONTACTS – 10,948 (30%)

UNKNOWN EXPOSURE – 25,087 (68%)

GLOBAL UPDATES

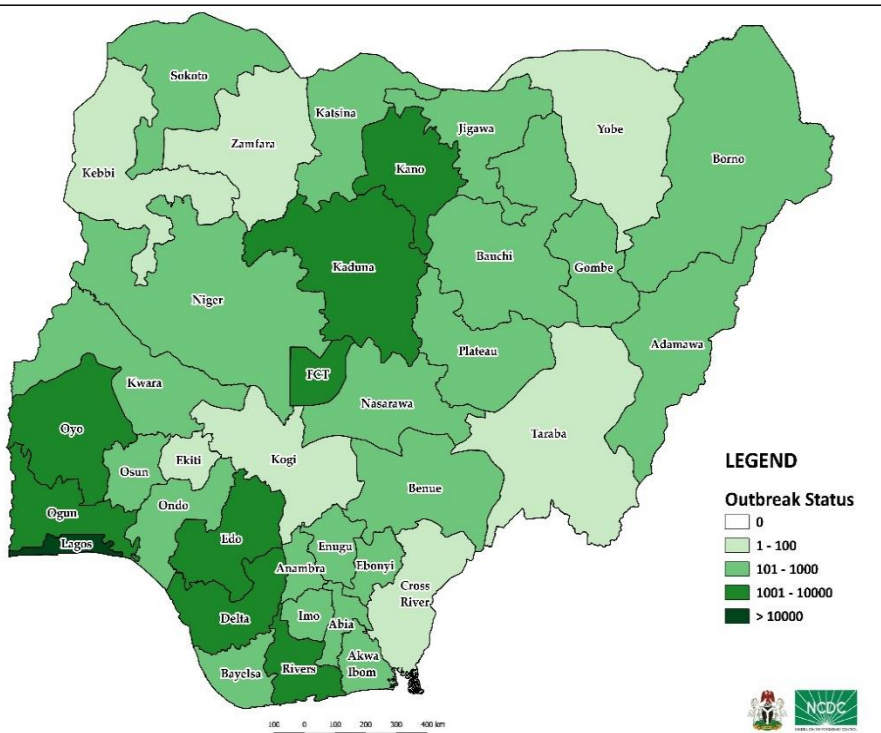
TOTAL NUMBER OF CASES

14, 043, 176 (597,583 deaths)

COUNTRIES & TERRITORIES AFFECTED*

213

*Excluding the 2 International Conveyances



GENERAL FACT SHEET – DATA AS AT 19TH JULY 2020

Table 1: States with reported laboratory-confirmed COVID-19 cases, recoveries, deaths and days since last reported case

STATES	CONFIRMED CASES		DISCHARGED CASES		DEATHS		TOTAL ACTIVE CASES	DAYS SINCE LAST REPORTED CASE
	CUMULATIVE	NEW	CUMULATIVE	NEW	CUMULATIVE	NEW		
Lagos	13,438	97	1,964	6	176	0	11,298	0
FCT	3,027	70	883	7	39	0	2,105	0
Oyo	2,167	61	1,116	40	20	0	1,031	0
Edo	1,989	104	1,220	12	68	6	701	0
Rivers	1,529	13	996	4	48	0	485	0
Delta	1,423	0	630	0	37	0	756	1
Kano	1,400	5	1,125	25	53	0	222	0
Ogun	1,174	6	850	16	22	0	302	0
Kaduna	1,156	38	857	28	12	0	287	0
Ondo	925	13	143	0	21	0	761	0
Katsina	710	13	441	0	23	0	246	0
Enugu	675	0	360	0	17	0	298	1
Ebonyi	655	0	557	0	14	2	84	1
Plateau	648	28	281	6	18	2	349	0
Borno	599	1	510	7	35	0	54	0
Gombe	546	2	505	12	22	0	19	0
Kwara	535	0	188	0	14	0	333	1
Bauchi	529	0	506	0	13	0	10	1
Abia	479	0	365	0	3	0	111	1
Imo	452	0	83	0	9	0	360	1
Osun	351	19	99	0	10	0	242	0
Bayelsa	322	0	177	2	20	0	125	1
Jigawa	322	0	308	0	11	0	3	3
Nasarawa	276	4	113	0	8	0	155	0
Benue	260	66	44	0	6	0	210	0
Akwa Ibom	176	14	121	0	3	0	52	0
Sokoto	153	0	137	0	16	0	0	15
Niger	151	0	112	0	7	0	32	2
Anambra	118	0	67	0	10	0	41	3
Adamawa	115	0	85	2	9	1	21	1
Kebbi	88	0	74	0	7	0	7	4
Ekiti	86	2	47	0	2	0	37	0
Zamfara	77	0	71	0	5	0	1	1
Yobe	64	0	53	0	8	0	3	1
Taraba	30	0	11	0	0	0	19	6
Cross River	13	0	3	0	1	0	9	1
Kogi	5	0	3	0	2	0	0	16
Total	36,663	556	15,105	167	789	11	20,769	

States, including FCT, are arranged in descending order by number of total confirmed cases and then alphabetical order

SELECTED CHARTS

Figure 2: Daily Epidemic Curve of Confirmed Cases (WK9 – WK29)

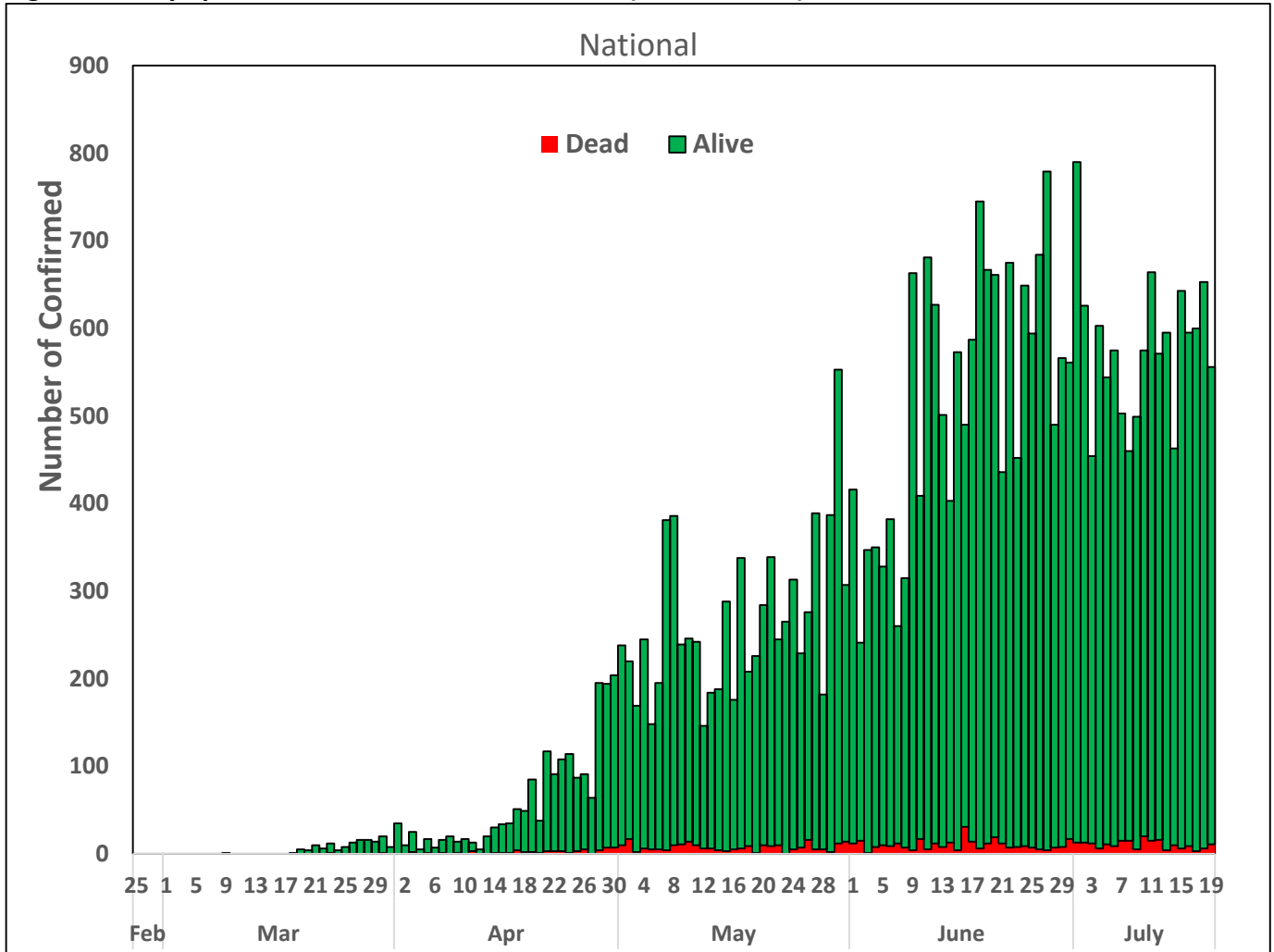
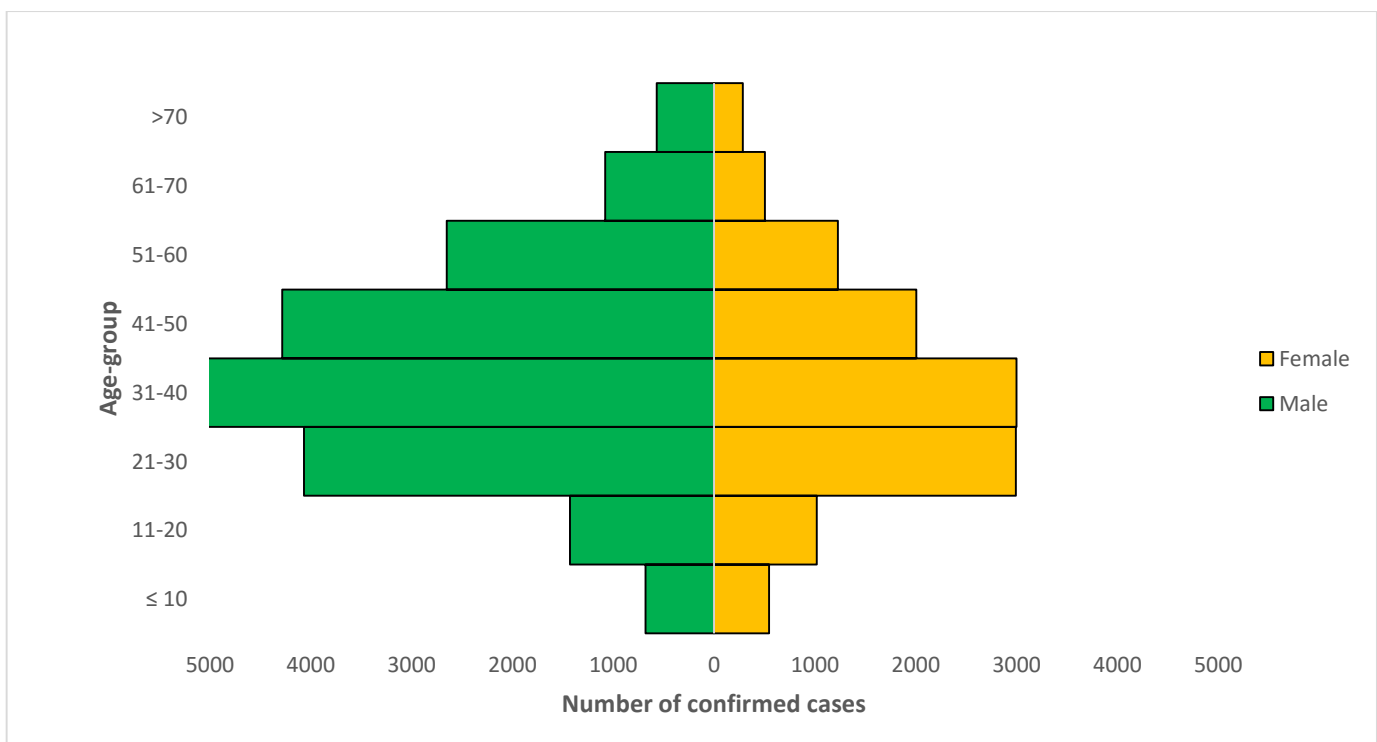


Figure 3: Age-Sex Distribution of Confirmed Cases (WK9 – WK29)



PREPAREDNESS

Since the confirmation of the first case on 27th February 2020, the NCDC has released advisories and statements to help Nigerians and affected groups in particular to respond to the pandemic

- NCDC has launched an online course on [Infection, Prevention and Control \(IPC\) for COVID-19](#) NCDC eLearning platform
- Ahead of forthcoming elections in the country, NCDC has issued [Guidelines for Conducting Elections During the COVID-19 Outbreak in Nigeria](#).
- To protect our elders, and those with pre-existing medical conditions, NCDC has issued an [Advisory for Vulnerable Groups](#).
- NCDC has released [guidelines on the re-opening of places for worship](#).
- The Nigeria Police Force has released COVID-19 operational guidelines for the [Police and other Law Enforcement Agencies](#) in Nigeria
- NCDC and the Department of Hospital Services (Federal Ministry of Health) have updated the [case management guidelines](#) (version 3) with reviewed changes such as the discharge criteria and medication being used for the treatment of cases
- Guidelines have been issued for the [safe transportation of remains of persons suspected or confirmed to have died of COVID-19](#)
- Information on diagnostics of the COVID-19 virus can be found in our [detailed FAQ document](#).
- To increase our testing capacity, NCDC has issued guidelines for the [integration of private labs](#).
- Guidelines for [businesses and employers](#) have been updated.
- NCDC has updated its [case definition](#) , [community case definition](#) and [case management guide](#).
- NCDC releases periodic [public health advisories](#) to Nigerians on the COVID-19 disease.
- To adhere to post-lockdown measures, NCDC has released an [advisory on the use of face masks](#), as well as information on the [Use of Cloth face masks](#) and [how to make your cloth face masks](#).
- NCDC has released guidelines for the [management of pregnant women and nursing mothers](#) during the pandemic.
- To address burials of loved ones who die from COVID-19, guidelines have been issued to advise on the [management of dead bodies](#).
- For health centres managing cases, the following documents have been released- a guideline for the [Rational Use of Personal Protective Equipment in the care of COVID-19 cases](#).
- As part of plans to increase the testing capacity of the country, the NCDC published a [National Strategy to Scale Up Access to Coronavirus Disease Testing in Nigeria](#) document.
- The Presidential Task Force has published policies and announcements on COVID-19 [available on the website of the Presidency](#) – including presidential addresses, task force updates and information on livelihood and economic support.

RESPONSE

On 28th February 2020, a multi-sectoral Emergency Operations Centre (EOC) was activated at Level 3 – the highest emergency level in Nigeria –led by NCDC in close coordination with the State Public Health EOCs (PHEOC).

- **Developed dashboard for national, state and LGA} level analysis of COVID-19 dData in collaboration with partners**
- **Ongoing optimisation of University of Nigeria Teaching Hospital (UNTH) laboratory, Enugu State**
- **Facilitated the training of 45 health care workers in Ekiti State**
- **Conducted supportive supervision of Infection Prevention and Control (IPC) activities provided at Karu Hospital Isolation Centre, FCT**
- **Supplied Personal Protective Equipment (PPE) and commodities to Federal Medical Centre Jabi, FCT**
- **Supported the Universal Basic Education Commission (UBEC) in the development of the a draft handbook for teachers on COVID-19 prevention in schools**

- Daily tracking of sample collection by states to monitor case finding efforts
- Received a total of 279 Persons of Interest (POIs)/returnees from China (9), Lebanon (37), India (196) and Guinea Conakry (37) at Murtala Mohammed International Airport (MMIA) Lagos
- All returnees were received, screened and given the travellers kit on arrival at the airport
- All returnees were issued COVID-19 test appointment at Infectious Disease Hospital (IDH), Yaba, Lagos
- Activated three new laboratories - Edo Specialist Hospital, Benin, Edo; Abubakar Tafawa Balewa University Teaching Hospital, Bauchi; and Indoama Company Molecular Laboratory, Rivers
- Trained 13 laboratory personnel on IPC measures for safe sample collection in Abia State
- Supplied another batch of Personal Protective Equipment (PPE) to laboratories at Bayero University, Kano and University of Benin Teaching Hospital, Edo
- All education materials can be found via www.covid19.ncdc.gov.ng