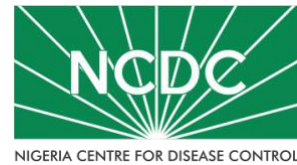


# COVID-19 SITUATION REPORT

## SITUATION REPORT 121

Sunday, 28th June 2020



NIGERIA CENTRE FOR DISEASE CONTROL

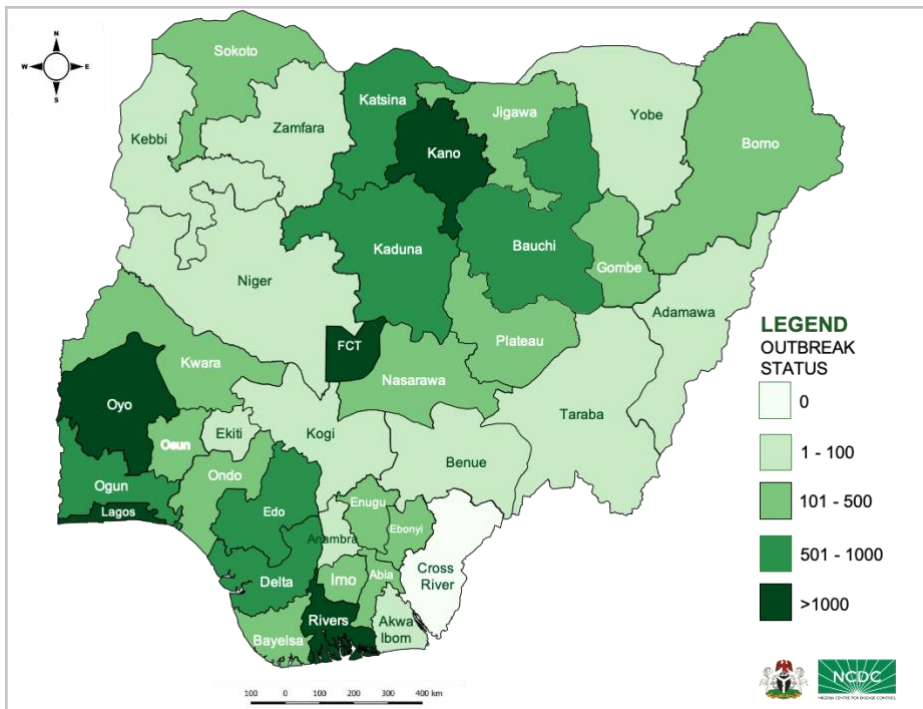
DATA AS REPORTED AND ACCURATE BY NCDC AS AT MIDNIGHT 28<sup>th</sup> JUNE 2020

### HIGHLIGHTS

- Four hundred and ninety (**490**) confirmed cases were reported in the last 24 hours from **20** states – Lagos (118), Delta (84), Ebonyi (68), FCT (56), Plateau (39), Edo (29), Katsina (21), Imo (13), Ondo (12), Adamawa (11), Ogun (8), Osun (8), Rivers (6), Kano (5), Enugu (3), Bauchi (3), Akwa Ibom (3), Bayelsa (1), Kogi (1) and Oyo (1).
- No new state recorded a confirmed COVID-19 case in the last 24 hours. The total number of states including FCT that have reported at least one confirmed case in Nigeria is still **36** (35 states + FCT)
- Three hundred and eighty-two (**382**) cases were discharged in the last 24 hours in **17** states – Ebonyi (85), Lagos (62), Bayelsa (42), Abia (34), Kano (31), Kaduna (26), Delta (20), Ondo (18), Bauchi (15), Akwa Ibom (11), Rivers (10), Edo (10), FCT (8), Enugu (6), Gombe (2), Adamawa (1) and Ekiti (1).
- Seven deaths were recorded in the last 24 hours in **five** states – Ebonyi (2), Edo (2), Imo (1), Ogun (1) and Plateau (1).

### STATE OF THE NATION

Figure 1: Map of Nigeria showing 35 states and FCT affected by COVID-19



### SITUATION UPDATES

Total (New in the last 24 hours)

SAMPLES TESTED

**132,304 (2140)**

CONFIRMED CASES

**24,567 (490)**

AFFECTED STATES INCLUDING FCT

**36 (0)**

DISCHARGED CASES

**9,007 (382)**

CONFIRMED FATALITIES

**565 (7) – 2.3% CFR**

DEMOGRAPHICS

MALE – 16,322 (66%)

FEMALE – 8,245 (34%)

MOST AFFECTED AGE GROUP

31 - 40 (24%)

PERSONS OF INTEREST

**10,567 (Total)**

**10,533 (99.7% - Exceeded Follow Up)**

PROVENANCE

TRAVEL HISTORY – 407 (2%)

CONTACTS – 5,631 (23%)

UNKNOWN EXPOSURE – 18,039 (75%)

GLOBAL UPDATES

TOTAL NUMBER OF CASES

**9,843,073 (495,760 deaths)**

COUNTRIES & TERRITORIES AFFECTED\*

**213**

\*Excluding the 2 International Conveyances

## GENERAL FACT SHEET – DATA AS AT 28<sup>th</sup> JUNE 2020

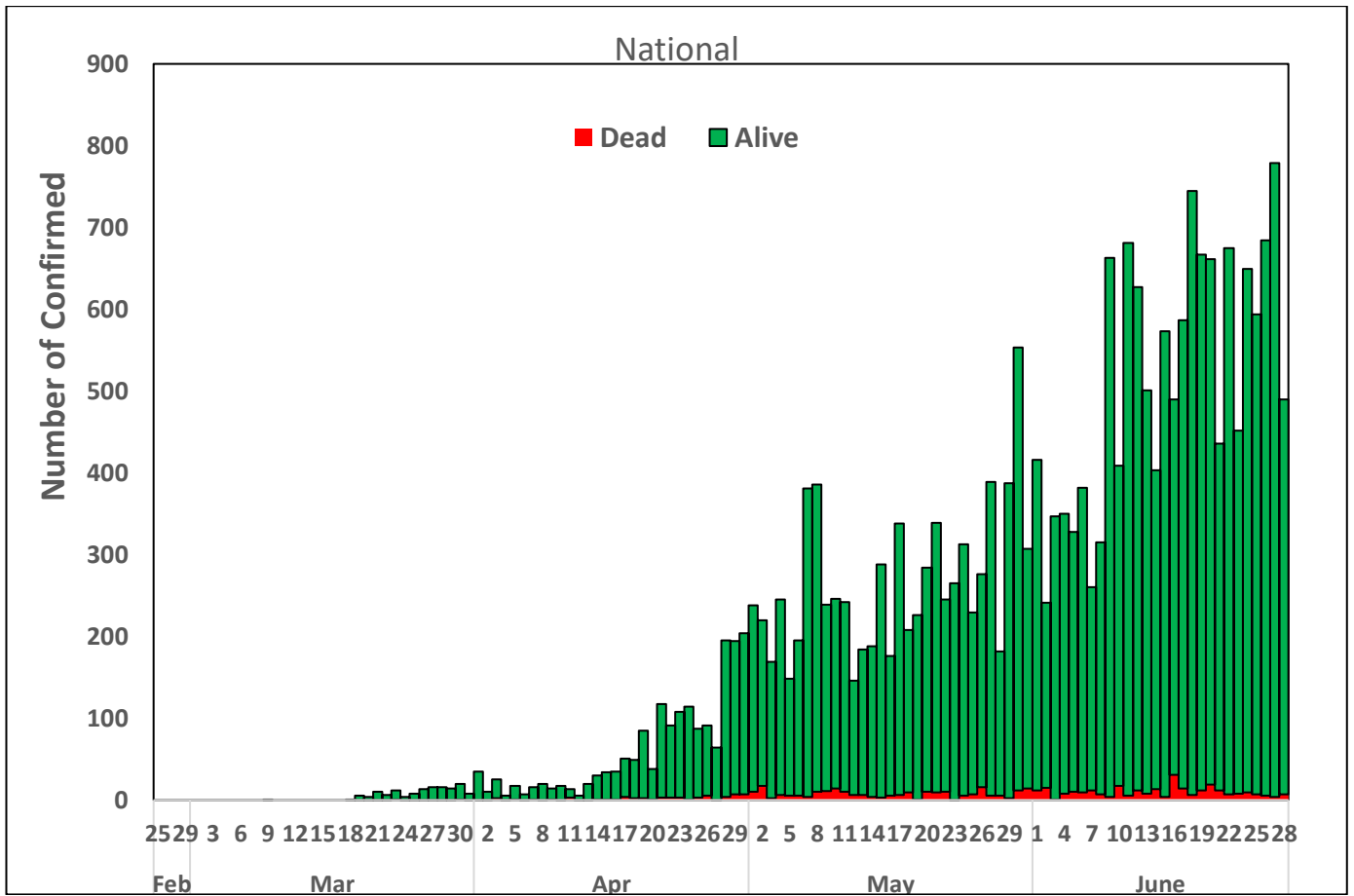
Table 1: States with reported laboratory-confirmed COVID-19 cases, recoveries, deaths and days since last reported case

STATES	CONFIRMED CASES		DISCHARGED CASES		DEATHS		TOTAL ACTIVE CASES	DAYS SINCE LAST REPORTED CASE
	CUMULATIVE	NEW	CUMULATIVE	NEW	CUMULATIVE	NEW		
Lagos	10,144	118	1,592	62	126	0	8,426	0
FCT	1,792	56	558	8	32	0	1,202	0
Oyo	1,306	1	506	0	11	0	789	0
Kano	1,200	5	866	31	51	0	283	0
Rivers	1,056	6	584	10	38	0	434	0
Edo	962	29	277	10	35	2	650	0
Delta	912	84	190	20	22	0	700	0
Ogun	782	8	539	0	18	1	225	0
Kaduna	703	0	449	26	12	0	242	1
Katsina	549	21	267	0	22	0	260	0
Bauchi	500	3	439	15	12	0	41	0
Gombe	492	0	346	2	16	0	130	1
Borno	486	0	418	0	32	0	36	1
Ebonyi	395	68	342	85	3	2	50	0
Plateau	337	39	156	0	9	1	172	0
Jigawa	317	0	191	0	6	0	120	15
Imo	303	13	38	0	4	1	261	0
Abia	302	0	207	34	3	0	92	1
Enugu	261	3	50	6	6	0	205	0
Ondo	244	12	89	18	19	0	136	0
Kwara	217	0	128	0	6	0	83	4
Nasarawa	206	0	112	0	8	0	86	1
Bayelsa	185	1	97	42	12	0	76	0
Sokoto	151	0	118	0	15	0	18	1
Osun	116	8	47	0	5	0	64	0
Akwa Ibom	86	3	54	11	2	0	30	0
Adamawa	84	11	38	1	6	0	40	0
Niger	84	0	37	0	3	0	44	3
Kebbi	76	0	42	0	6	0	28	1
Zamfara	76	0	71	0	5	0	0	41
Anambra	71	0	57	0	9	0	5	2
Yobe	59	0	48	0	8	0	3	1
Benue	47	0	15	0	1	0	31	5
Ekiti	43	0	29	1	2	0	12	1
Taraba	19	0	10	0	0	0	9	3
Kogi	4	1	0	0	0	0	4	0
<b>TOTAL</b>	<b>24,567</b>	<b>490</b>	<b>9,007</b>	<b>382</b>	<b>565</b>	<b>7</b>	<b>14,995</b>	

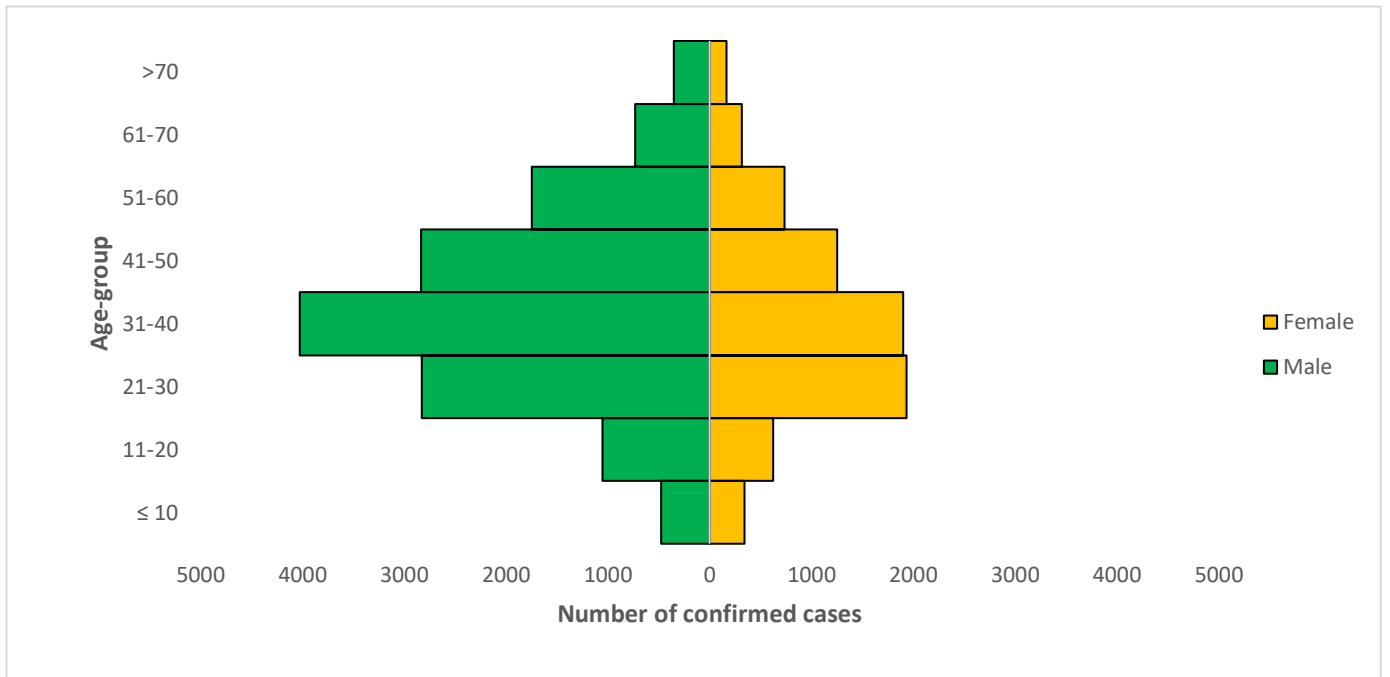
States including FCT are arranged in descending order by number of total confirmed cases

## SELECTED CHARTS

**Figure 2: Daily Epidemic Curve of Confirmed Cases (WK9 – WK26)**



**Figure 3: Age-Sex Distribution of Confirmed Cases (WK9 – WK26)**



## PREPAREDNESS

Since the confirmation of the first case on 27<sup>th</sup> February 2020, the NCDC has released advisories and statements to help Nigerians and affected groups in particular to respond to the pandemic

- NCDC has released [guidelines on the re-opening of places for worship](#).
- The Nigeria Police Force has released COVID-19 operational guidelines for the [Police and other Law Enforcement Agencies](#) in Nigeria
- NCDC and the Department of Hospital Services (Federal Ministry of Health) have updated the [case management guidelines](#) (version 3) with reviewed changes such as the discharge criteria and medication being used for the treatment of cases
- Guidelines have been issued for the [safe transportation of remains of persons suspected or confirmed to have died of COVID-19](#)
- Information on diagnostics of the COVID-19 virus can be found in our [detailed FAQ document](#).
- To increase our testing capacity, NCDC has issued guidelines for the [integration of private labs](#).
- Guidelines for [businesses and employers](#) have been updated.
- NCDC has updated its [case definition](#) , [community case definition](#) and [case management guide](#).
- NCDC releases periodic [public health advisories](#) to Nigerians on the COVID-19 disease.
- To adhere to post-lockdown measures, NCDC has released an [advisory on the use of face masks](#), as well as information on the [Use of Cloth face masks](#) and [how to make your cloth face masks](#).
- NCDC has released guidelines for the [management of pregnant women and nursing mothers](#) during the pandemic.
- To address burials of loved ones who die from COVID-19, guidelines have been issued to advise on the [management of dead bodies](#).
- For health centres managing cases, the following documents have been released- a guideline for the [Rational Use of Personal Protective Equipment in the care of COVID-19 cases](#).
- As part of plans to increase the testing capacity of the country, the NCDC published a [National Strategy to Scale Up Access to Coronavirus Disease Testing in Nigeria](#) document.
- The Presidential Task Force has published policies and announcements on COVID-19 [available on the website of the Presidency](#) – including presidential addresses, task force updates and information on livelihood and economic support.

## RESPONSE

On 28<sup>th</sup> February 2020, a multi-sectoral Emergency Operations Centre (EOC) was activated at Level 3 – the highest emergency level in Nigeria –led by NCDC in close coordination with the State Public Health EOCs (PHEOC).

- **Ongoing review of contact tracing guidelines**
- **160 returnees from New York were received and quarantined at the mandatory institutional facilities in Lagos**
- **Identified focal persons in General hospitals (GHs) and two treatment centres in Bayelsa State**
- **Disseminated key messages to states & Local Government Areas (LGAs), Media and Health Professionals Associations on Short Messaging Services (SMS) and social media**
- Deployment of additional Rapid Response Team to support sample collection in FCT
- A total of 211 Persons of Interest (POIs)/returnees from three countries: Sudan (145), South Africa (51) and Ghana (15) were received and monitored
- Of the 856 POIs so far received in Abuja, 16 have tested positive
- Trained 35 Proprietary and Patent Medical Vendors (PPMVs) on chain of infection, prevention and control (IPC) measures of COVID-19 in Kano State
- Deployment of IPC materials to Federal Medical Centres (FMC) in Owerri, Akwa Ibom and Asokoro treatment centres
- Shared key messages centered on asymptomatic cases, clarification between malaria and COVID-19 to states
- All education materials can be found via [www.covid19.ncdc.gov.ng](http://www.covid19.ncdc.gov.ng)