

COVID-19 SITUATION REPORT

SITUATION REPORT 140

Friday, 17th July 2020



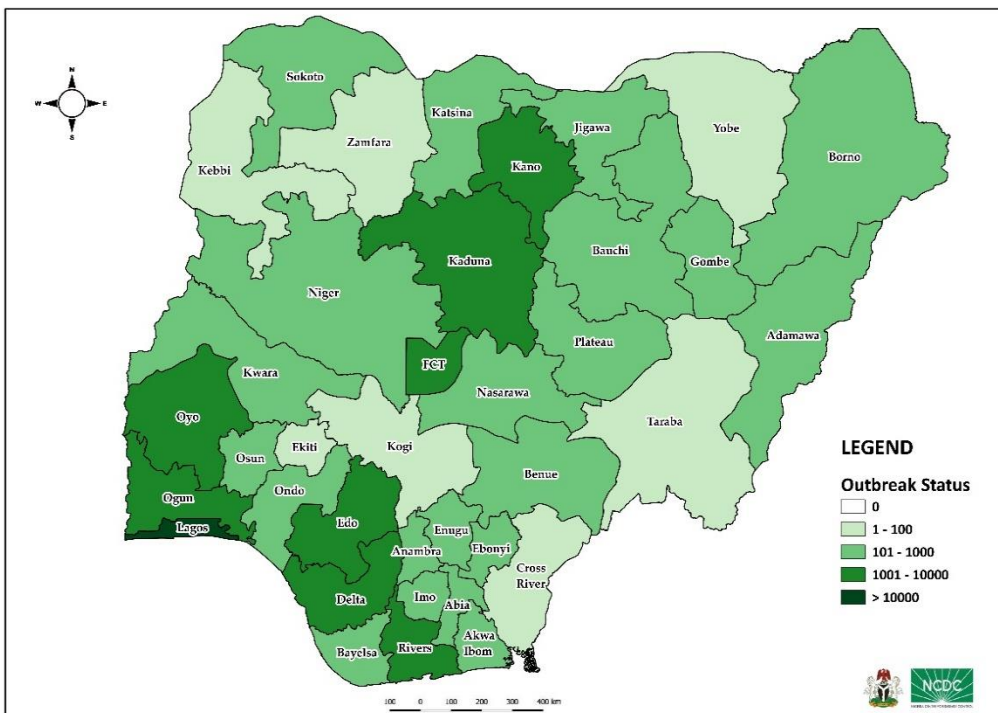
DATA AS REPORTED AND ACCURATE BY NCDC AS AT MIDNIGHT 17th JULY 2020

HIGHLIGHTS

- Six hundred (**600**) confirmed cases were reported in the last 24 hours from **19** states – Lagos (129), FCT (118), Oyo (87), Kano (55), Benue (42), Enugu (35), Kwara (28), Imo (16), Ogun (13), Kaduna (12), Ondo (12), Delta (11), Edo (11), Plateau (8), Ekiti (6), Niger (6), Abia (4), Borno (4) and Gombe (3).
- Three hundred and forty-one (**341**) cases were discharged in the last 24 hours in **15** states – Kaduna (85), Edo (58), Borno (39), Kano (36), Enugu (30), FCT (17), Rivers (17), Bayelsa (12), Lagos (10), Akwa Ibom (9), Kwara (8), Ekiti (7), Imo (5), Niger (4) and Plateau (4).
- **Three (3)** deaths were recorded in the last 24 hours in **two** states – Delta (2) and Bayelsa (1).
- All **36** states in Nigeria, and the FCT, have reported a confirmed case.

STATE OF THE NATION

Figure 1: Map of Nigeria showing 36 states and FCT affected by COVID-19



SITUATION UPDATES

Total (New in the last 24 hours)

SAMPLES TESTED

209,446 (3024)

CONFIRMED CASES

35,454 (600)

AFFECTED STATES INCLUDING FCT

37

DISCHARGED CASES

14,633 (341)

CONFIRMED FATALITIES

772 (3) – 2.2% CFR

DEMOGRAPHICS

MALE – 23,009 (65%)

FEMALE – 12,445 (35%)

MOST AFFECTED AGE GROUP

31 - 40 (25%)

PERSONS OF INTEREST

10,987 (Total)

10,881 (99% - Exceeded Follow Up)

PROVENANCE

TRAVEL HISTORY – 628 (2%)

CONTACTS – 8,758 (25%)

UNKNOWN EXPOSURE – 26,068 (73%)

GLOBAL UPDATES

TOTAL NUMBER OF CASES

13,616,593 (585,727 deaths)

COUNTRIES & TERRITORIES AFFECTED*

213

*Excluding the 2 International Conveyances

GENERAL FACT SHEET – DATA AS AT 17th JULY 2020

Table 1: States with reported laboratory-confirmed COVID-19 cases, recoveries, deaths and days since last reported case

STATES	CONFIRMED CASES		DISCHARGED CASES		DEATHS		TOTAL ACTIVE CASES	DAYS SINCE LAST REPORTED CASE
	CUMULATIVE	NEW	CUMULATIVE	NEW	CUMULATIVE	NEW		
Lagos	13,226	129	1,958	10	176	0	11,092	0
FCT	2,879	118	857	17	39	0	1,983	0
Oyo	2,076	87	1,011	0	19	0	1,046	0
Edo	1,885	11	1,208	58	62	0	615	0
Rivers	1,480	0	981	17	47	0	452	1
Delta	1,415	11	585	0	37	2	793	0
Kano	1,386	55	1,071	36	53	0	262	0
Ogun	1,159	13	777	0	22	0	360	0
Kaduna	1,099	12	829	85	12	0	258	0
Ondo	877	12	139	0	21	0	717	0
Katsina	669	0	441	0	23	0	205	5
Ebonyi	646	0	532	0	10	0	104	2
Plateau	603	8	264	4	16	0	323	0
Borno	597	4	503	39	35	0	59	0
Enugu	595	35	360	30	16	0	219	0
Gombe	540	3	475	0	22	0	43	0
Bauchi	522	0	505	0	13	0	4	1
Abia	460	4	365	0	3	0	92	0
Kwara	450	28	187	8	14	0	249	0
Imo	436	16	83	5	9	0	344	0
Osun	328	0	84	0	9	0	235	1
Jigawa	322	0	308	0	11	0	3	1
Bayelsa	318	0	175	12	20	1	123	3
Nasarawa	254	0	113	0	8	0	133	2
Benue	185	42	42	0	6	0	137	0
Akwa Ibom	162	0	121	9	3	0	38	1
Sokoto	153	0	137	0	16	0	0	13
Niger	151	6	112	4	7	0	32	0
Anambra	118	0	67	0	10	0	41	1
Adamawa	111	0	83	0	8	0	20	1
Kebbi	88	0	74	0	7	0	7	2
Ekiti	78	6	47	7	2	0	29	0
Zamfara	76	0	71	0	5	0	0	60
Yobe	63	0	51	0	8	0	4	1
Taraba	30	0	11	0	0	0	19	4
Cross River	12	0	3	0	1	0	8	1
Kogi	5	0	3	0	2	0	0	14
Total	35,454	600	14,633	341	772	3	20,049	

States, including FCT, are arranged in descending order by number of total confirmed cases and then alphabetical order

SELECTED CHARTS

Figure 2: Daily Epidemic Curve of Confirmed Cases (WK9 – WK29)

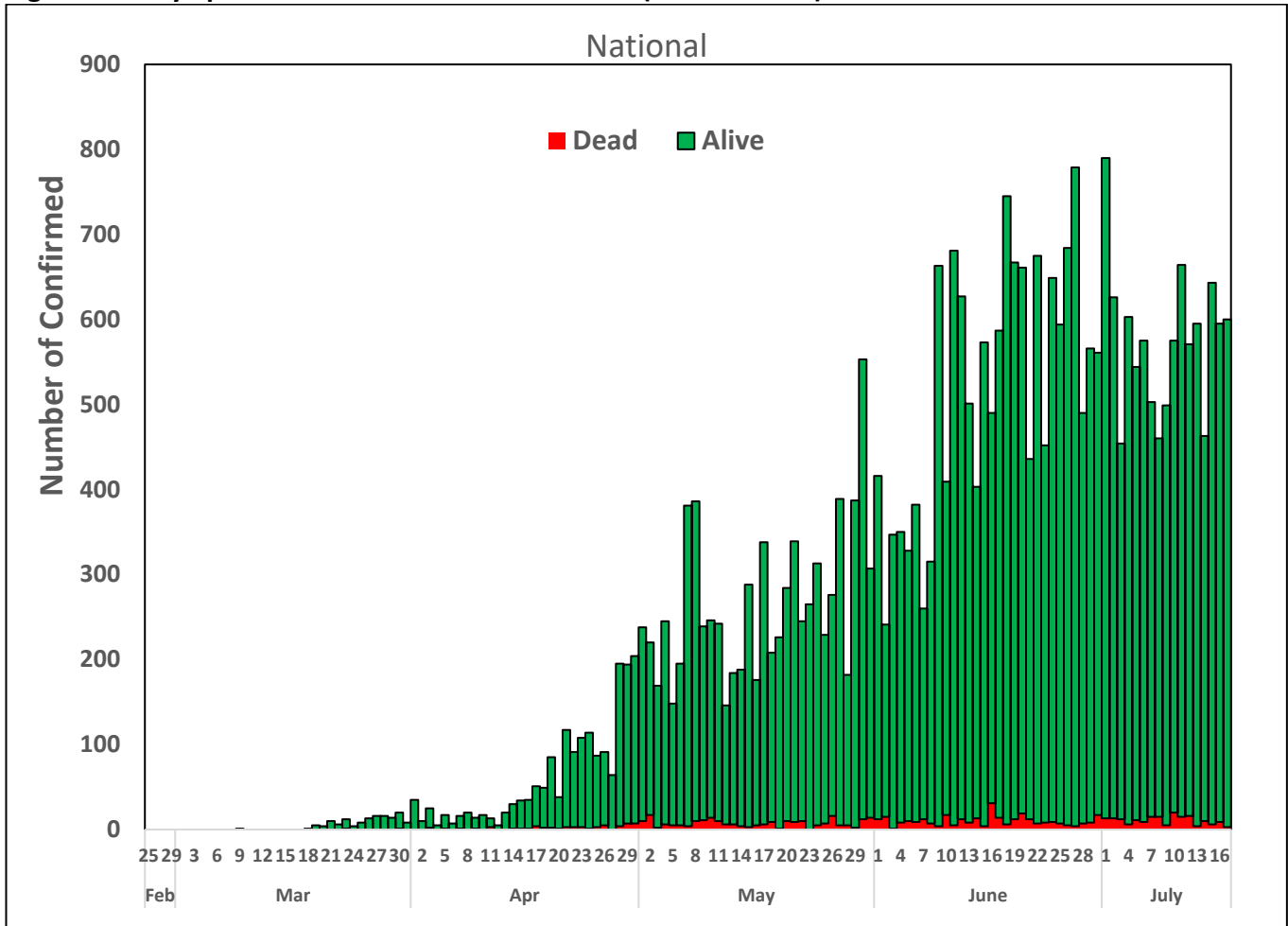
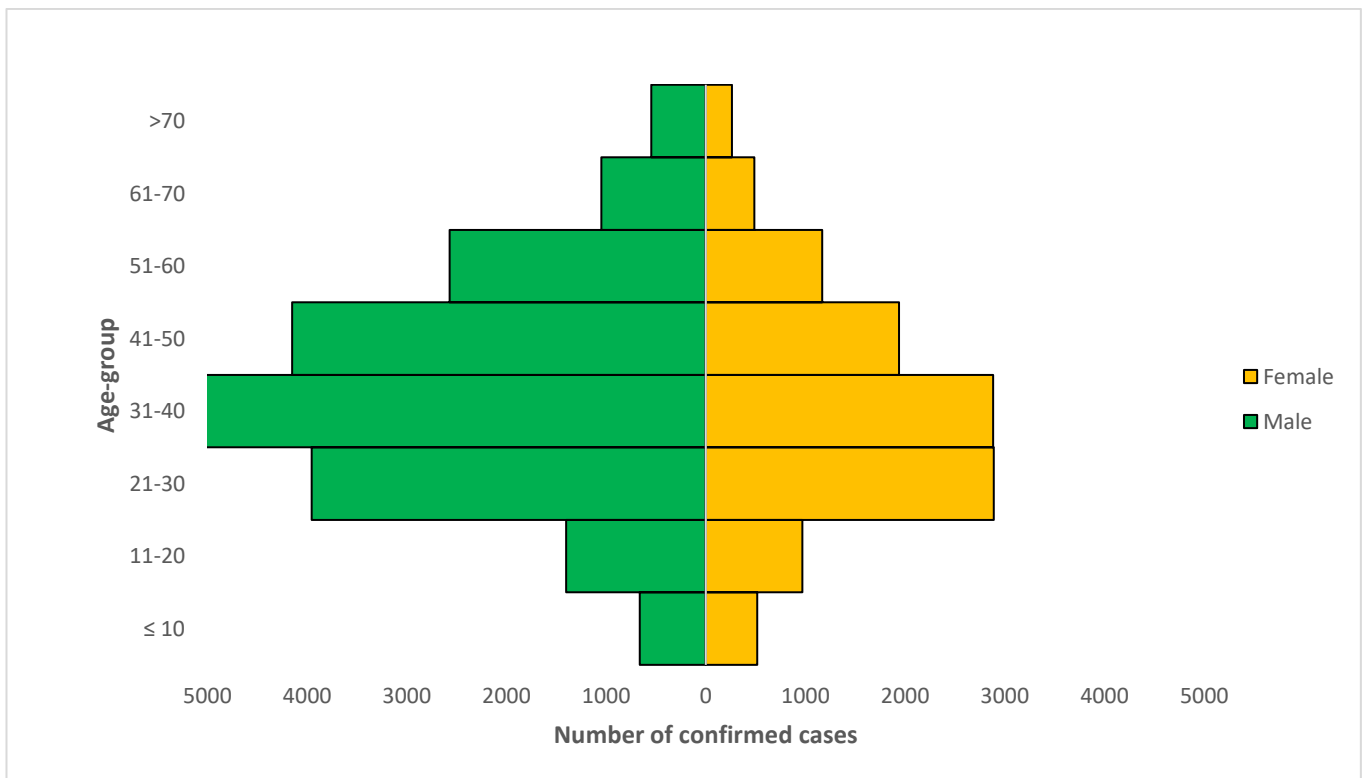


Figure 3: Age-Sex Distribution of Confirmed Cases (WK9 – WK29)



PREPAREDNESS

Since the confirmation of the first case on 27th February 2020, the NCDC has released advisories and statements to help Nigerians and affected groups in particular to respond to the pandemic

- NCDC has launched an online course on [Infection, Prevention and Control \(IPC\) for COVID-19](#) NCDC eLearning platform
- Ahead of forthcoming elections in the country, NCDC has issued [Guidelines for Conducting Elections During the COVID-19 Outbreak in Nigeria](#).
- To protect our elders, and those with pre-existing medical conditions, NCDC has issued an [Advisory for Vulnerable Groups](#).
- NCDC has released [guidelines on the re-opening of places for worship](#).
- The Nigeria Police Force has released COVID-19 operational guidelines for the [Police and other Law Enforcement Agencies in Nigeria](#)
- NCDC and the Department of Hospital Services (Federal Ministry of Health) have updated the [case management guidelines](#) (version 3) with reviewed changes such as the discharge criteria and medication being used for the treatment of cases
- Guidelines have been issued for the [safe transportation of remains of persons suspected or confirmed to have died of COVID-19](#)
- Information on diagnostics of the COVID-19 virus can be found in our [detailed FAQ document](#).
- To increase our testing capacity, NCDC has issued guidelines for the [integration of private labs](#).
- Guidelines for [businesses and employers](#) have been updated.
- NCDC has updated its [case definition](#) , [community case definition](#) and [case management guide](#).
- NCDC releases periodic [public health advisories](#) to Nigerians on the COVID-19 disease.
- To adhere to post-lockdown measures, NCDC has released an [advisory on the use of face masks](#), as well as information on the [Use of Cloth face masks](#) and [how to make your cloth face masks](#).
- NCDC has released guidelines for the [management of pregnant women and nursing mothers](#) during the pandemic.
- To address burials of loved ones who die from COVID-19, guidelines have been issued to advise on the [management of dead bodies](#).
- For health centres managing cases, the following documents have been released- a guideline for the [Rational Use of Personal Protective Equipment in the care of COVID-19 cases](#).
- As part of plans to increase the testing capacity of the country, the NCDC published a [National Strategy to Scale Up Access to Coronavirus Disease Testing in Nigeria](#) document.
- The Presidential Task Force has published policies and announcements on COVID-19 [available on the website of the Presidency](#) – including presidential addresses, task force updates and information on livelihood and economic support.

RESPONSE

On 28th February 2020, a multi-sectoral Emergency Operations Centre (EOC) was activated at Level 3 – the highest emergency level in Nigeria –led by NCDC in close coordination with the State Public Health EOCs (PHEOC).

- **Continued support to states coordination teams on implementation of State Incident Action Plan (IAP)**
- **Ongoing weekly data quality monitoring and engagement of State Epidemiologists (SEs) and State Surveillance Officers (SSO)**
- **Conducted supervisory visits to hospitals in Abuja to guide the setting up of temporary holding areas**
- **Procured and configured tablets to be distributed to states and treatment centres in order to strengthen data management of the national supply chain**
- **Distributed COVID-19 IEC materials to all states in the country**
- **Engaged development partners to increase support for state level activities**

- Received 71 Persons of Interest (POIs)/returnees from France and all were issued COVID-19 test appointment at the Infectious Disease Hospital (IDH), Yaba, Lagos State
- Facilitated a sensitisation workshop on COVID-19 Infection Prevention and Control (IPC) measures for staff and corps members at the National Youth Service Corps (NYSC) secretariat in the FCT
- Assessed the University of Uyo Teaching Hospital, Akwa Ibom on IPC measures
- Supplied Personal Protective Equipment (PPEs) commodities to laboratory facilities at National Veterinary Research Institute (NVRI), Vom and Jos University Teaching Hospital (JUTH), Jos, Plateau State
- Deployed PPE commodities and medical devices to This Day Dome Treatment Centre in FCT
- All education materials can be found via www.covid19.ncdc.gov.ng