

COVID-19 SITUATION REPORT

SITUATION REPORT 152

Wednesday, 29th July 2020



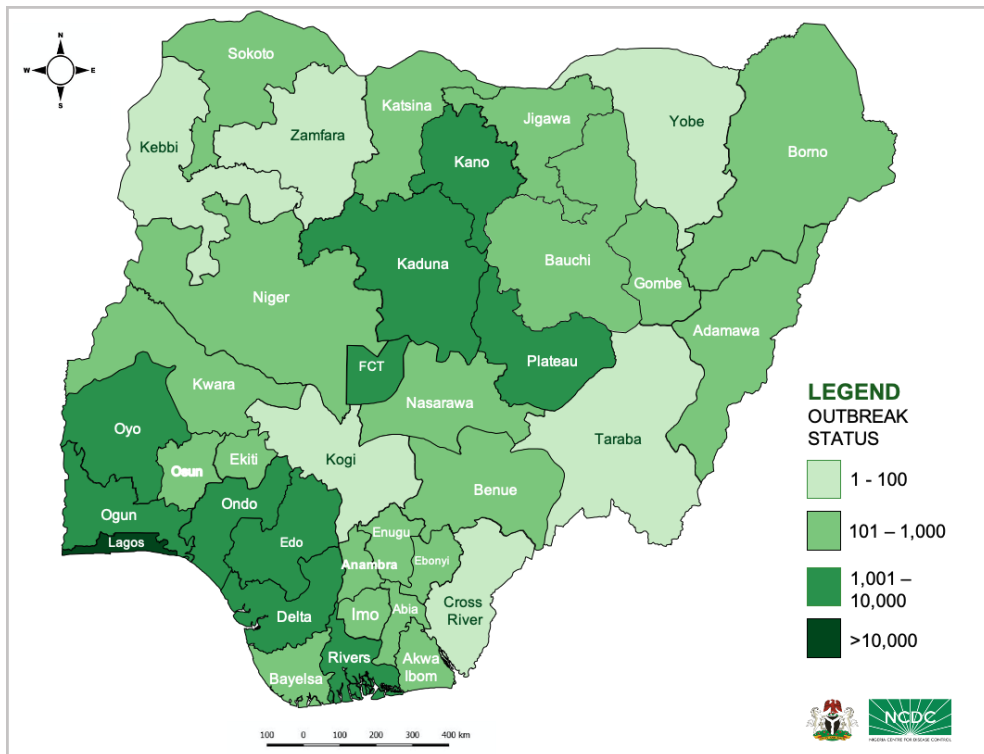
DATA AS REPORTED AND ACCURATE BY NCDC AS AT MIDNIGHT 29TH JULY 2020

HIGHLIGHTS

- Four hundred and four (**404**) confirmed cases were reported in the last 24 hours from **20** states – Lagos (106), FCT (54), Rivers (48), Plateau (40), Edo (29), Enugu (21), Oyo (20), Kano (18), Ondo (15), Ogun (10), Ebonyi (9), Ekiti (8), Kaduna (6), Cross River (5), Kwara (4), Anambra (3), Delta (3), Imo (2), Nasarawa (2) and Borno (1)
- Two hundred and forty (**240**) cases were discharged in the last 24 hours in **11** states – Edo (100), Rivers (37), Kaduna (30), Oyo (23), Lagos (14), Bayelsa (13), Osun (9), FCT (7), Gombe (3), Kwara (2) and Imo (2).
- Five (**5**) deaths were recorded in the last 24 hours in **three** states – Kwara (3), FCT (1) and Ondo (1).
- All **36** states in Nigeria, and the FCT, have reported a confirmed case.

STATE OF THE NATION

Figure 1: Map of Nigeria showing 36 states and FCT affected by COVID-19



SITUATION UPDATES

Total (New in the last 24 hours)

SAMPLES TESTED

276,053 (3,305)

CONFIRMED CASES

42,208 (404)

AFFECTED STATES INCLUDING FCT

37

DISCHARGED CASES

19,004 (240)

CONFIRMED FATALITIES

873 (5) – 2.1% CFR

DEMOGRAPHICS

MALE – 27,065 (64%)

FEMALE – 15,143 (36%)

MOST AFFECTED AGE GROUP

31 - 40 (25%)

PERSONS OF INTEREST

11,077 (Total)

11,030 (99.6% - Exceeded Follow Up)

PROVENANCE

TRAVEL HISTORY – 719 (2%)

CONTACTS – 10,424 (25%)

UNKNOWN EXPOSURE – 31,065 (73%)

GLOBAL UPDATES

TOTAL NUMBER OF CASES

16,558,289 (659,093 deaths)

COUNTRIES & TERRITORIES AFFECTED*

214

*Excluding the 2 International Conveyance

GENERAL FACT SHEET – DATA AS AT 29TH JULY 2020

Table 1: States with reported laboratory-confirmed COVID-19 cases, recoveries, deaths and days since last reported case

STATES	CONFIRMED CASES		DISCHARGED CASES		DEATHS		TOTAL ACTIVE CASES	DAYS SINCE LAST REPORTED CASE
	TOTAL	NEW	TOTAL	NEW	TOTAL	NEW		
Lagos	14,954	106	2,143	14	192	0	12,619	0
FCT	3,614	54	1,084	7	42	1	2,488	0
Oyo	2,688	20	1,210	23	27	0	1,451	0
Edo	2,241	29	1,684	100	79	0	478	0
Rivers	1,739	48	1,410	37	52	0	277	0
Kano	1,584	18	1,258	0	53	0	273	0
Delta	1,486	3	1,257	0	42	0	187	0
Kaduna	1,396	6	1,106	30	12	0	278	0
Ogun	1,336	10	1,068	0	23	0	245	0
Ondo	1,123	15	548	0	23	1	552	0
Plateau	1,056	40	469	0	19	0	568	0
Enugu	790	21	425	0	18	0	347	0
Ebonyi	785	9	596	0	24	0	165	0
Kwara	753	4	213	2	19	3	521	0
Katsina	742	0	457	0	23	0	262	1
Borno	613	1	561	0	35	0	17	0
Gombe	607	0	524	3	23	0	60	1
Abia	545	0	426	0	5	0	114	4
Bauchi	539	0	518	0	13	0	8	2
Osun	500	0	229	9	11	0	260	1
Imo	468	2	119	2	9	0	340	0
Benue	346	0	58	0	6	0	282	2
Bayelsa	327	0	277	13	21	0	29	3
Jigawa	322	0	308	0	11	0	3	13
Nasarawa	312	2	223	0	8	0	81	0
Niger	223	0	133	0	12	0	78	1
Akwa Ibom	221	0	121	0	7	0	93	3
Sokoto	154	0	137	0	16	0	1	4
Adamawa	140	0	85	0	9	0	46	4
Anambra	135	3	75	0	12	0	48	0
Ekiti	132	8	55	0	2	0	75	0
Kebbi	90	0	79	0	7	0	4	8
Zamfara	77	0	71	0	5	0	1	11
Yobe	66	0	54	0	8	0	4	4
Taraba	54	0	11	0	0	0	43	8
Cross River	45	5	9	0	3	0	33	0
Kogi	5	0	3	0	2	0	0	26
Total	42,208	404	19,004	240	873	5	22,331	

States, including FCT, are arranged in descending order by number of total confirmed cases and then alphabetical order

SELECTED CHARTS

Figure 2: Daily Epidemic Curve of Confirmed Cases (WK9 – WK31)

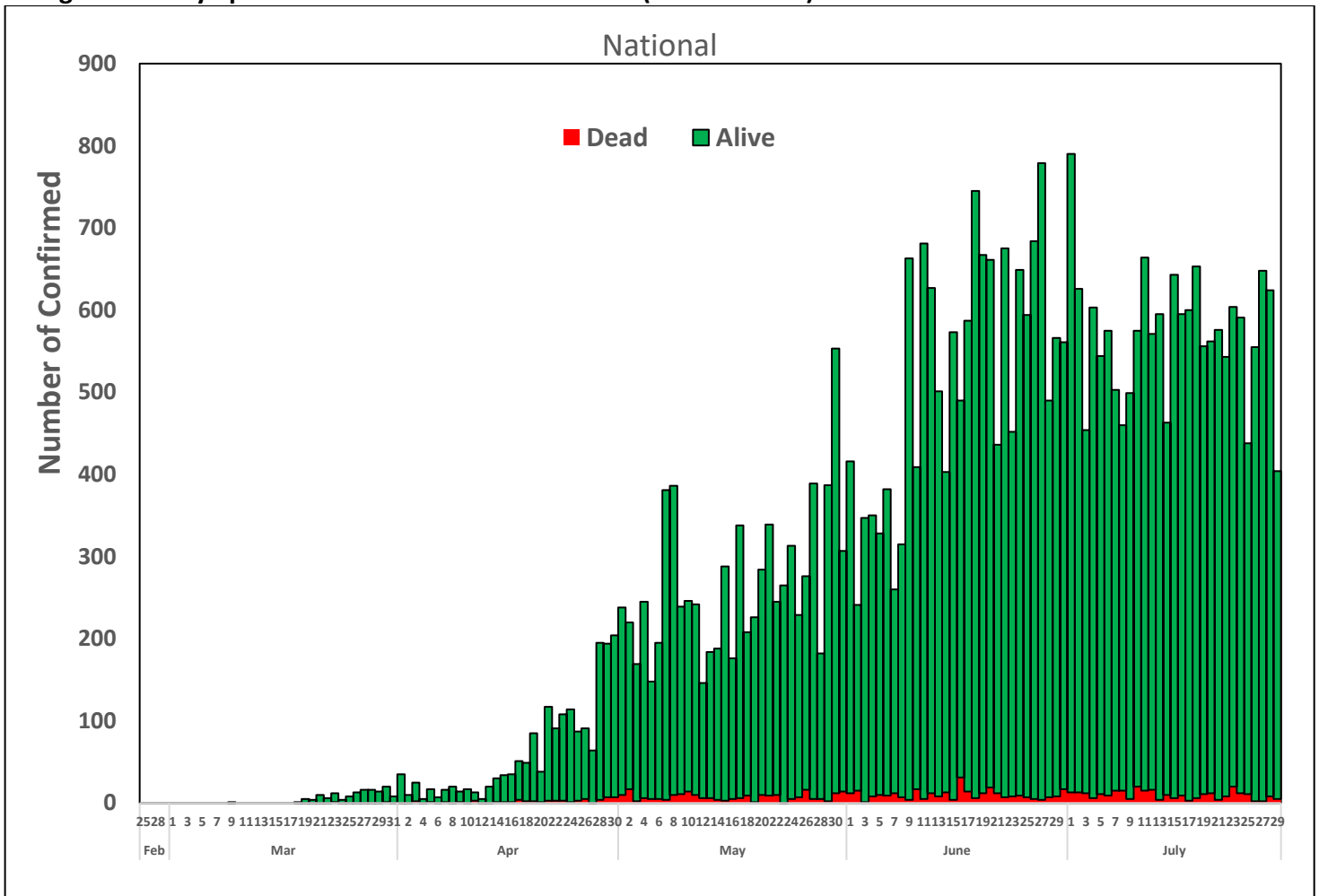
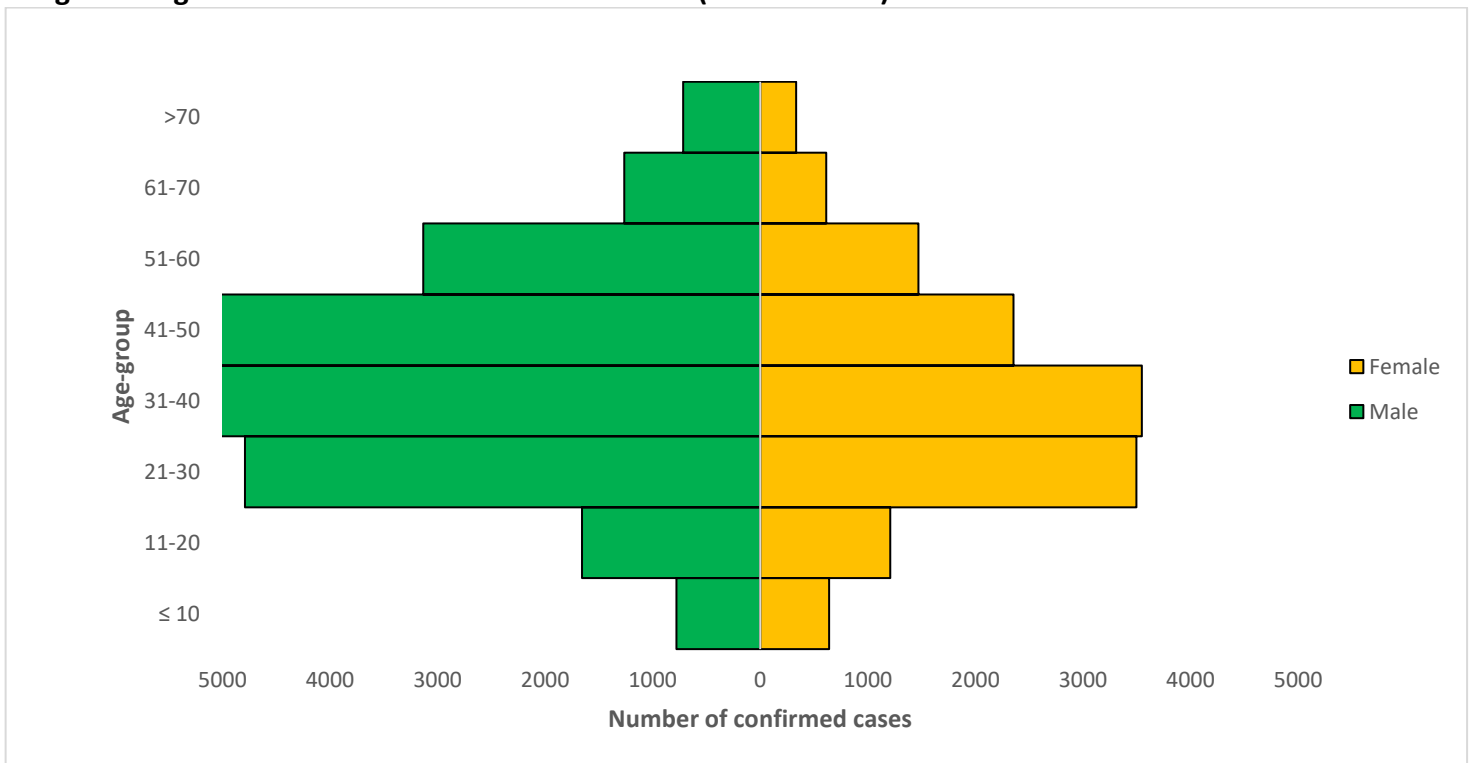


Figure 3: Age-Sex Distribution of Confirmed Cases (WK9 – WK31)



PREPAREDNESS

Since the confirmation of the first case on 27th February 2020, the NCDC has released advisories and statements to help Nigerians and affected groups in particular to respond to the pandemic

- NCDC has launched an online course on [Infection, Prevention and Control \(IPC\) for COVID-19](#) NCDC eLearning platform
- Ahead of forthcoming elections in the country, NCDC has issued [Guidelines for Conducting Elections During the COVID-19 Outbreak in Nigeria](#).
- To protect our elders, and those with pre-existing medical conditions, NCDC has issued an [Advisory for Vulnerable Groups](#).
- NCDC has released [guidelines on the re-opening of places for worship](#).
- NCDC has released [Strategies to Improve Surveillance for COVID-19 Guidance for States](#)
- The Nigeria Police Force has released COVID-19 operational guidelines for the [Police and other Law Enforcement Agencies in Nigeria](#)
- Guidelines have been issued for the [safe transportation of remains of persons suspected or confirmed to have died of COVID-19](#)
- Information on diagnostics of the COVID-19 virus can be found in our [detailed FAQ document](#).
- To increase our testing capacity, NCDC has issued guidelines for the [integration of private labs](#).
- Guidelines for [businesses and employers](#) have been updated.
- NCDC has updated its [case definition](#) , [community case definition](#) and [case management guide](#).
- NCDC releases periodic [public health advisories](#) to Nigerians on the COVID-19 disease.
- To adhere to post-lockdown measures, NCDC has released an [advisory on the use of face masks](#), as well as information on the [Use of Cloth face masks](#) and [how to make your cloth face masks](#).
- NCDC has released guidelines for the [management of pregnant women and nursing mothers](#) during the pandemic.
- To address burials of loved ones who die from COVID-19, guidelines have been issued to advise on the [management of dead bodies](#).
- For health centres managing cases, the following documents have been released- a guideline for the [Rational Use of Personal Protective Equipment in the care of COVID-19 cases](#).
- As part of plans to increase the testing capacity of the country, the NCDC published a [National Strategy to Scale Up Access to Coronavirus Disease Testing in Nigeria](#) document.
- The Presidential Task Force has published policies and announcements on COVID-19 [available on the website of the Presidency](#) – including presidential addresses, task force updates and information on livelihood and economic support.

RESPONSE

On 28th February 2020, a multi-sectoral Emergency Operations Centre (EOC) was activated at Level 3 – the highest emergency level in Nigeria –led by NCDC in close coordination with the State Public Health EOCs (PHEOC).

- **Concluded the training of community health care workers on active case search and contact tracing**
- **Trained personnel of the National Reference Laboratory, FCT on use of automated extractors**
- **Supported all health facilities in Katsina State to activate Infection Prevention and Control (IPC) committees**
- **Concluded the three-day workshop for Orange Network of IPC collaborators**
- **Distributed Personal Protective Equipment (PPE) response materials and commodities to the South - West states including the treatment centres, Teaching Hospitals and Primary Health Care Agencies in Ondo, Oyo, Ekiti, Ogun, Osun and Lagos**
- **Finalised plans for distribution of additional response materials and commodities to the North-West states**
- **Finalised the development of surveillance strategy guidance for states and management of loss to follow up**

- Optimised and operationalised molecular laboratory and GeneXpert laboratory at the University of Nigeria Teaching Hospital Enugu State
- Conducted facility level IPC supervision in high burden LGAs in Lagos (Eti-Osa, Mushin LGAs) and provided refresher training sessions to personnel
- Held stakeholders meeting to discuss sequelae and management of COVID-19 patients post discharge
- Finalised planning for distribution of additional response materials and commodities to the South-West states
- Reconciled physical stock balance with available inventory balance as at 27th July 2020
- All education materials can be found via www.covid19.ncdc.gov.ng