

# COVID-19 SITUATION REPORT

## SITUATION REPORT 96

Wednesday, 3<sup>rd</sup> June 2020



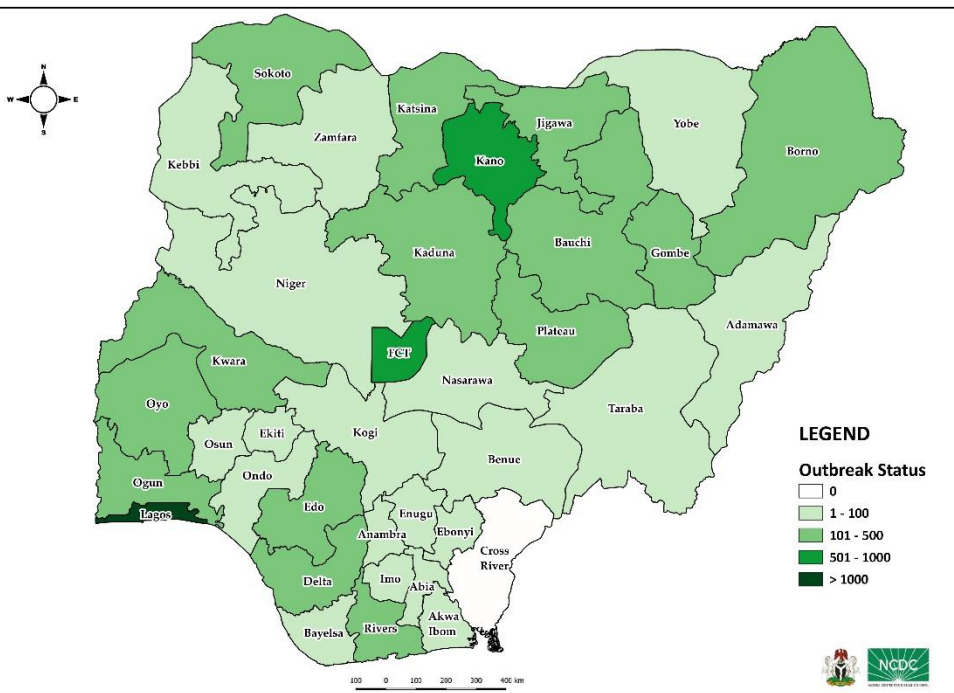
DATA AS REPORTED AND ACCURATE BY NCDC AS AT MIDNIGHT 3<sup>RD</sup> JUNE 2020

### HIGHLIGHTS

- Three hundred and forty-eight (**348**) confirmed cases were reported in the last 24 hours in nineteen (**19**) states – Lagos (163), FCT (76), Ebonyi (23), Rivers (21), Delta (8), Nasarawa (8), Niger (8), Enugu (6), Bauchi (5), Edo (5), Ekiti (5), Gombe (5), Ondo (5), Benue (4), Ogun (2), Anambra (1), Kogi (1), Osun (1) and Plateau (1).
- No new state recorded a confirmed COVID-19 case in the last 24 hours. The total number of states including FCT that have reported at least one confirmed case in Nigeria is still **36** (35 states + FCT).
- Ninety (**90**) cases were discharged in the last 24 hours in ten (**10**) states – Kano (32), Lagos (20), Plateau (13), Katsina (9), Delta (4), FCT (3), Rivers (3), Ekiti (2), Gombe (2), Jigawa (2).
- One (**1**) death was recorded in the last 24 hours in one (**1**) state – Gombe.

### STATE OF THE NATION

Figure 1: Map of Nigeria showing 35 states and FCT affected by COVID-19



### SITUATION UPDATES

Total (New in the last 24 hours)

SAMPLES TESTED

**71336 (1535)**

CONFIRMED CASES

**11166 (348)**

AFFECTED STATES INCLUDING FCT

**36 (0)**

DISCHARGED CASES

**3329 (90)**

CONFIRMED FATALITIES

**315 (1) – 3% CFR**

DEMOGRAPHICS

MALE – 7530 (67%)

FEMALE – 3636 (33%)

MOST AFFECTED AGE GROUP

31 - 40 (24%)

PERSONS OF INTEREST

**10078 (Total)**

**10043 (99.7% - Exceeded Follow Up)**

PROVENANCE

TRAVEL HISTORY – 290 (3%)

CONTACTS – 2560 (23%)

UNKNOWN EXPOSURE – 8316 (74%)

GLOBAL UPDATES

TOTAL NUMBER OF CASES

**6,194,533 (376,320 deaths)**

COUNTRIES & TERRITORIES AFFECTED\*

**213**

\*Excluding the 2 International Conveyances

## GENERAL FACT SHEET – DATA AS AT 3<sup>RD</sup> JUNE 2020

Table 1: States with reported laboratory-confirmed COVID-19 cases, recoveries, deaths and days since last reported case

STATES	CONFIRMED CASES		DISCHARGED CASES		DEATHS		TOTAL ACTIVE CASES	DAYS SINCE LAST REPORTED CASE
	CUMULATIVE	NEW	CUMULATIVE	NEW	CUMULATIVE	NEW		
Lagos	5440	163	878	20	67	0	4495	0
Kano	970	0	318	32	45	0	607	1
FCT	763	76	205	3	20	0	538	0
Katsina	371	0	108	9	19	0	244	2
Edo	341	5	77	0	14	0	250	0
Oyo	317	0	98	0	7	0	212	1
Kaduna	297	0	175	0	8	0	114	1
Borno	296	0	175	0	26	0	95	1
Ogun	282	2	160	0	9	0	113	0
Jigawa	274	0	140	2	5	0	129	1
Rivers	269	21	76	3	16	0	177	0
Bauchi	246	5	222	0	8	0	16	0
Gombe	169	5	124	2	7	1	38	0
Sokoto	115	0	97	0	14	0	4	12
Kwara	111	0	37	0	1	0	73	2
Plateau	109	1	82	13	2	0	25	0
Delta	106	8	27	4	8	0	71	0
Nasarawa	88	8	19	0	3	0	66	0
Zamfara	76	0	71	0	5	0	0	16
Ebonyi	63	23	8	0	0	0	55	0
Yobe	52	0	24	0	7	0	21	5
Osun	47	1	35	0	4	0	8	0
Akwa Ibom	45	0	14	0	2	0	29	6
Adamawa	42	0	27	0	4	0	11	2
Niger	41	8	9	0	1	0	31	0
Imo	39	0	14	0	0	0	25	2
Kebbi	33	0	29	0	4	0	0	6
Ondo	33	5	21	0	4	0	8	0
Ekiti	25	5	18	2	2	0	5	0
Enugu	24	6	12	0	0	0	12	0
Bayelsa	21	0	8	0	2	0	11	3
Taraba	18	0	10	0	0	0	8	14
Abia	15	0	7	0	0	0	8	2
Benue	13	4	1	0	0	0	12	0
Anambra	12	1	3	0	1	0	8	0
Kogi	3	1	0	0	0	0	3	0
<b>TOTAL</b>	<b>11166</b>	<b>348</b>	<b>3329</b>	<b>90</b>	<b>315</b>	<b>1</b>	<b>7522</b>	

States including FCT are arranged in descending order by number of total confirmed cases, excluding Cross River

### errata

Sokoto – Confirmed Cases – (-1)

## SELECTED CHARTS

Figure 2: Daily Epidemic Curve of Confirmed Cases (WK9 – WK23)

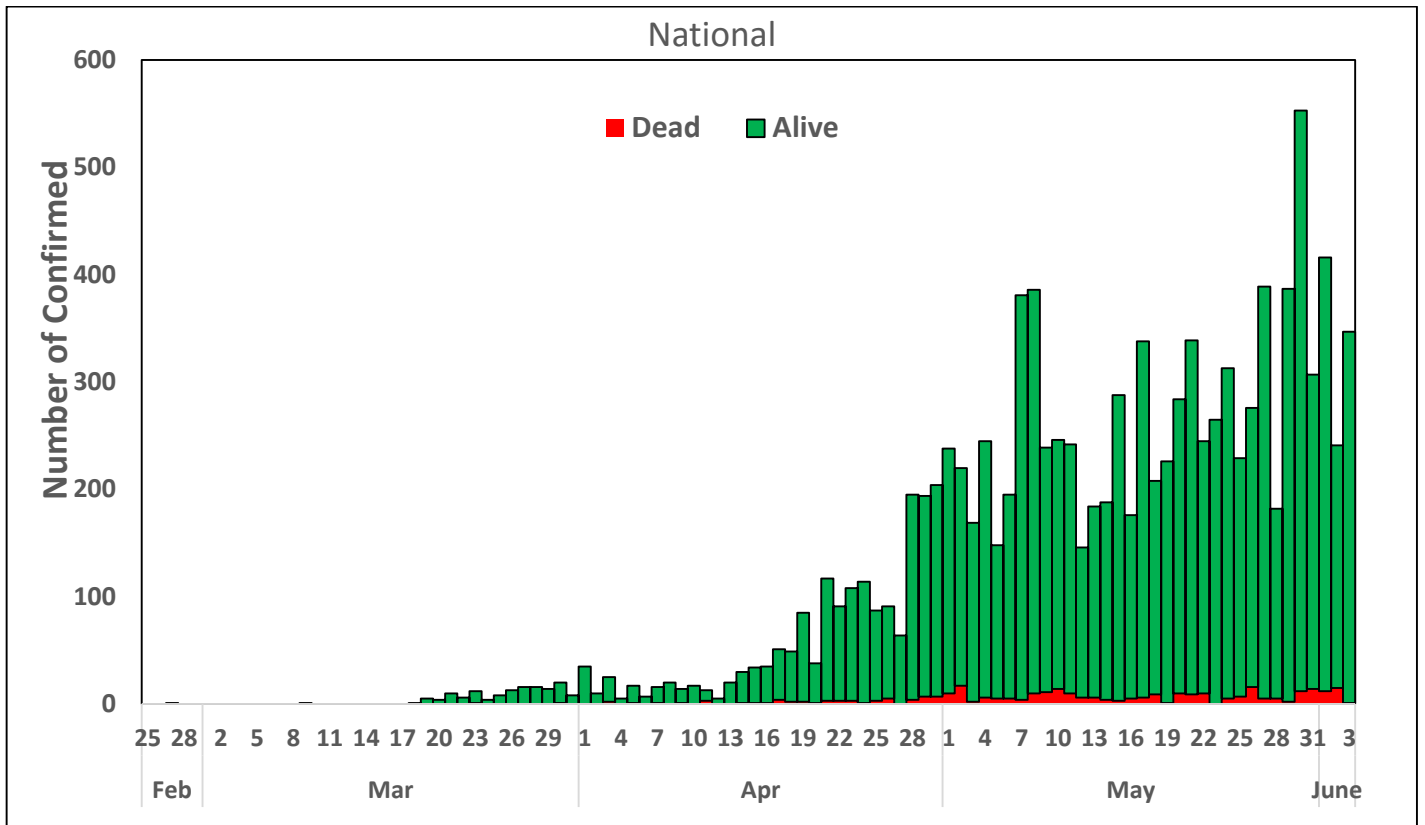
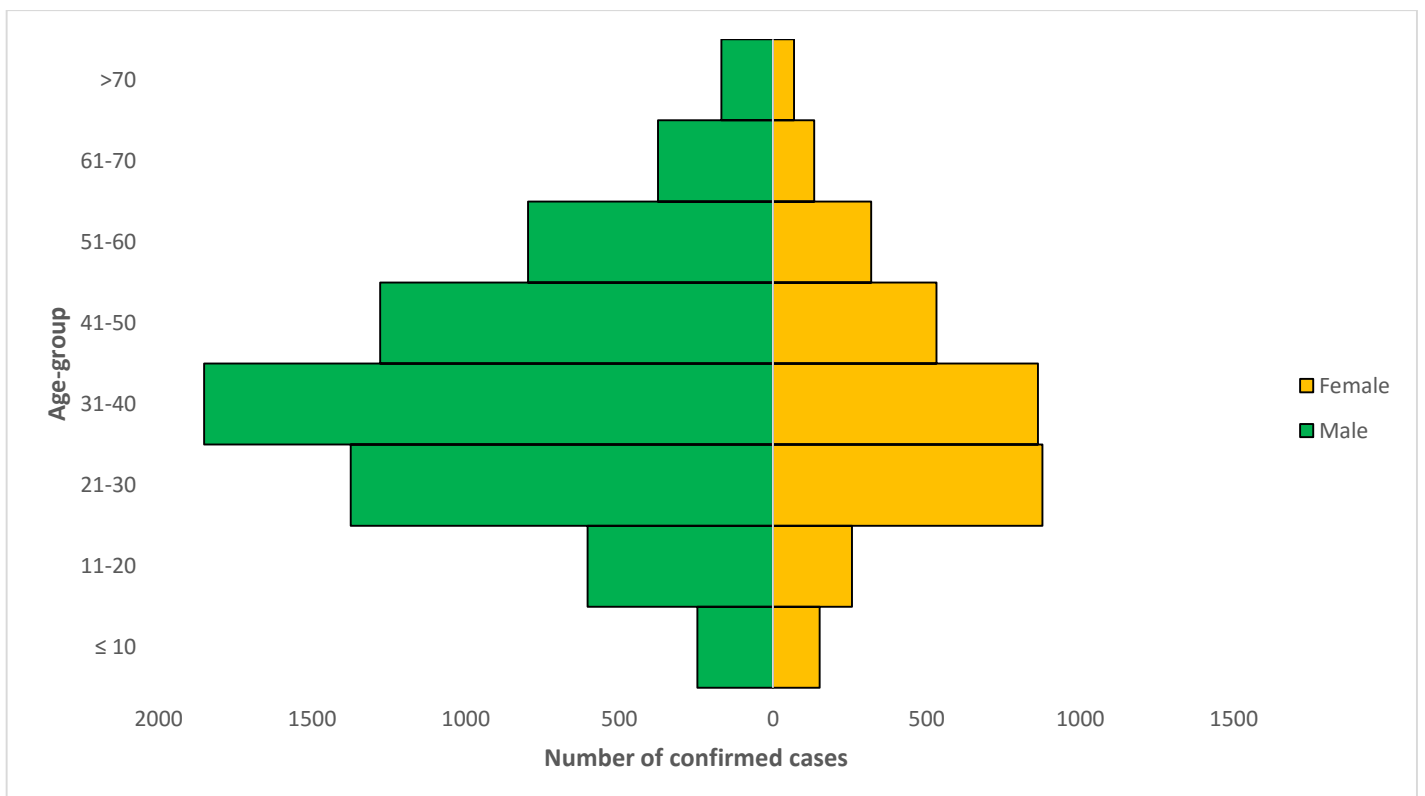


Figure 3: Age-Sex Distribution of Confirmed Cases (WK9 – WK23)



## PREPAREDNESS

Since the confirmation of the first case on 27<sup>th</sup> February 2020, the NCDC has released advisories and statements to help Nigerians and affected groups in particular to respond to the pandemic

- Information on diagnostics of the COVID-19 virus can be found in our [detailed FAQ document](#)
- To increase our testing capacity, NCDC has issued guidelines for the [integration of private labs](#).
- Guidelines for [businesses and employers](#) have been updated
- NCDC has updated its [case definition](#) , [community case definition](#) and [case management guide](#).
- Ahead of the Ramadan fasting period, an [Advisory for Ramadan](#) has been issued.
- NCDC releases periodic [public health advisories](#) to Nigerians on the COVID-19 disease.
- To adhere to post-lockdown measures, NCDC has released an [advisory on the use of face masks](#), as well as information on the [Use of Cloth face masks](#) and [how to make your cloth face masks](#).
- NCDC has released guidelines for the [management of pregnant women and nursing mothers](#) during the pandemic.
- To address burials of loved ones who die from COVID-19, guidelines have been issued to advise on the [management of dead bodies](#).
- NCDC has released a [Self-Isolation and Quarantine Guide](#) and [Mandatory institutional guideline for returnees to Nigeria](#) to help those who are exposed to COVID-19 confirmed cases or returnees to Nigeria.
- For health centres managing cases, the following documents have been released- a guideline for the [Rational Use of Personal Protective Equipment in the care of COVID-19 cases](#).
- As part of plans to increase the testing capacity of the country, the NCDC published a [National Strategy to Scale Up Access to Coronavirus Disease Testing in Nigeria](#) document.
- The Presidential Task Force has published policies and announcements on COVID-19 [available on the website of the Presidency](#) – including presidential addresses, task force updates and information on livelihood and economic support.

## RESPONSE

On 28<sup>th</sup> February 2020, a multi-sectoral Emergency Operations Centre (EOC) was activated at Level 3 – the highest emergency level in Nigeria –led by NCDC in close coordination with the State Public Health EOCs (PHEOC).

- **Engaged 1<sup>st</sup> batch of State PHEOCs (Bauchi, Enugu, Ekiti, Imo, Plateau, Sokoto and Zamfara) on IAP update for prioritisation of activities based on proposed NCDC/World Bank support**
- **A total of 80 Persons of Interest (POIs) who have recently returned to Nigeria are positive, 39 in Abuja and 41 in Lagos**
- **Ongoing finalisation of sample collection scale up strategy**
- **Developed guidelines on waste management**
- **Trained 40 Healthcare workers (HCWs) from secondary health facilities in Borno**
- **Provided supportive supervision on Infection Prevention and Control (IPC) compliance at Muhammadu Buhari Specialist Hospital Kano**
- **Trained 23 Health care facility staff and cleaners on standard IPC measures in quarantine facilities in the FCT**
- **Commenced planning for national dialogue on school reopening**
- **Completed training on design thinking for National Risk Communication officers from Ministeries, Departments and Agencies (MDAs)**
- **Deployment of IPC supplies and commodities to the FCT sample collection centre, and laboratories in Anambra and Kaduna**
- **National Emergency Operations Centre, case management team and the Presidential Task Force (PTF) have finalised strategies to support and enhance Lagos’s response efforts in identifying, isolating and managing COVID-19 cases**
- **Developed data-driven intervention plans for Bauchi due to the increasing number of healthcare worker infection.**
- **Trained additional 15 Healthcare workers on IPC in Borno**

- Ongoing onsite sample collection training in Benue and Ondo
- Engaged the 36 State Logistics Management Coordination Units to share logistics service data
- Official visit by the Presidential Task Force (PTF) to Lagos
- Trained 40 community Pharmacists and members of Civil Society Organisations on IPC in Kano
- Supported 36 States and FCT with Information, Education and Communication (IEC) materials
- All education materials can be found via [www.covid19.ncdc.gov.ng](http://www.covid19.ncdc.gov.ng)