

COVID-19 SITUATION REPORT

SITUATION REPORT 203

Friday, 18th September 2020



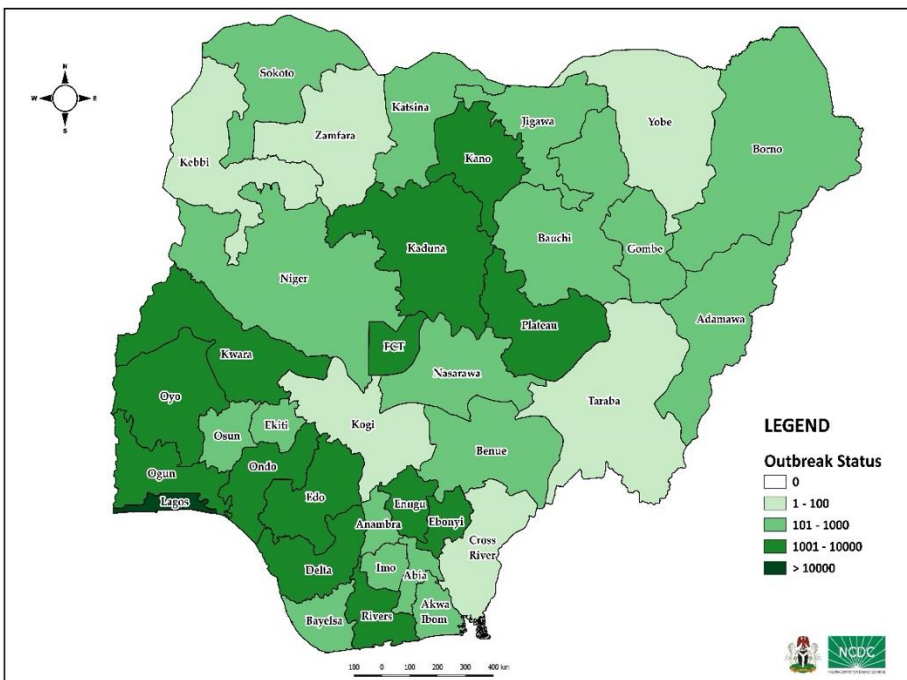
DATA AS REPORTED AND ACCURATE BY NCDC AS AT MIDNIGHT 18th SEPTEMBER 2020

HIGHLIGHTS

- Two hundred and twenty-one (**221**) confirmed cases were reported in the last 24 hours from **18** states – Lagos (59), Abia (46), FCT (22), Gombe (20), Plateau (17), Rivers (11), Bauchi (7), Benue (6), Ekiti (6), Imo (6), Kaduna (4), Kwara (4), Ondo (4), Ogun (3), Osun (3), Bayelsa (1), Edo (1) and Kano (1).
- Two hundred and thirteen (**213**) discharges have been reported in the last 24 hours in **ten** states – Oyo (100), Plateau (53), Kaduna (14), FCT (11), Abia (10), Rivers (10), Ekiti (8), Osun (4), Kano (2) and Gombe (1).
- One** death was reported in the last 24 hours in **one** state – Ekiti.
- All **36** states in Nigeria, and the FCT, have reported a confirmed case.
- There are now over **30 million** confirmed COVID-19 cases globally.

STATE OF THE NATION

Figure 1: Map of Nigeria showing 36 states and FCT affected by COVID-19



SITUATION UPDATES

Total (New in the last 24 hours)

SAMPLES TESTED

476,778 (4,587)

CONFIRMED CASES

56,956 (221)

AFFECTED STATES INCLUDING FCT

37

DISCHARGED CASES

48,305 (213)

CONFIRMED FATALITIES

1,094 (1) – 1.9% CFR

DEMOGRAPHICS

MALE – 36,193 (**64%**)

FEMALE – 20,763 (**36%**)

MOST AFFECTED AGE GROUP

31 - 40 (**26%**)

PERSONS OF INTEREST

11,777 (Total)

11,710 (99.4% - Exceeded Follow Up)

PROVENANCE

TRAVEL HISTORY – **850 (1%)**

CONTACTS – **15,213 (27%)**

UNKNOWN EXPOSURE – **40,893 (72%)**

GLOBAL UPDATES

TOTAL NUMBER OF CASES

30,055,710 (943,433 deaths)

COUNTRIES & TERRITORIES AFFECTED

216*

*Excluding the 2 International Conveyance

GENERAL FACT SHEET – DATA AS AT 18th SEPTEMBER 2020

Table 1: States with reported laboratory-confirmed COVID-19 cases, recoveries, deaths and days since last reported case

STATES	CONFIRMED CASES		DISCHARGED CASES		DEATHS		TOTAL ACTIVE CASES	DAYS SINCE LAST REPORTED CASE
	TOTAL	NEW	TOTAL	NEW	TOTAL	NEW		
Lagos	18,827	59	15,245	0	204	0	3,378	0
FCT	5,526	22	4,913	11	77	0	536	0
Oyo	3,226	0	2,202	100	39	0	985	1
Plateau	3,192	17	2,275	53	31	0	886	0
Edo	2,611	1	2,427	0	105	0	79	0
Kaduna	2,326	4	2,205	14	33	0	88	0
Rivers	2,220	11	2,130	10	59	0	31	0
Delta	1,799	0	1,638	0	49	0	112	1
Ogun	1,758	3	1,718	0	28	0	12	0
Kano	1,734	1	1,655	2	54	0	25	0
Ondo	1,594	4	1,490	0	35	0	69	0
Enugu	1,234	0	1,166	0	21	0	47	1
Ebonyi	1,035	0	1,004	0	30	0	1	1
Kwara	1,013	4	902	0	25	0	86	0
Abia	881	46	802	10	8	0	71	0
Katsina	845	0	457	0	24	0	364	1
Osun	810	3	775	4	17	0	18	0
Gombe	799	20	680	1	25	0	94	0
Borno	741	0	703	0	36	0	2	18
Bauchi	689	7	658	0	14	0	17	0
Imo	557	6	216	0	12	0	329	0
Benue	473	6	401	0	9	0	63	0
Nasarawa	447	0	298	0	12	0	137	3
Bayelsa	394	1	370	0	21	0	3	0
Jigawa	322	0	308	0	11	0	3	64
Ekiti	313	6	283	8	6	1	24	0
Akwa Ibom	288	0	264	0	8	0	16	1
Niger	250	0	232	0	12	0	6	1
Anambra	232	0	184	0	19	0	29	3
Adamawa	230	0	196	0	15	0	19	9
Sokoto	161	0	142	0	17	0	2	1
Taraba	95	0	73	0	6	0	16	7
Kebbi	93	0	84	0	8	0	1	21
Cross River	85	0	74	0	9	0	2	1
Zamfara	78	0	73	0	5	0	0	29
Yobe	73	0	59	0	8	0	6	2
Kogi	5	0	3	0	2	0	0	77
Total	56,956	221	48,305	213	1,094	1	7,557	

States, including FCT, are arranged in descending order by number of total confirmed cases and then alphabetical order

SELECTED CHARTS

Figure 2: Daily Epidemic Curve of Confirmed Cases (WK9 – WK38)

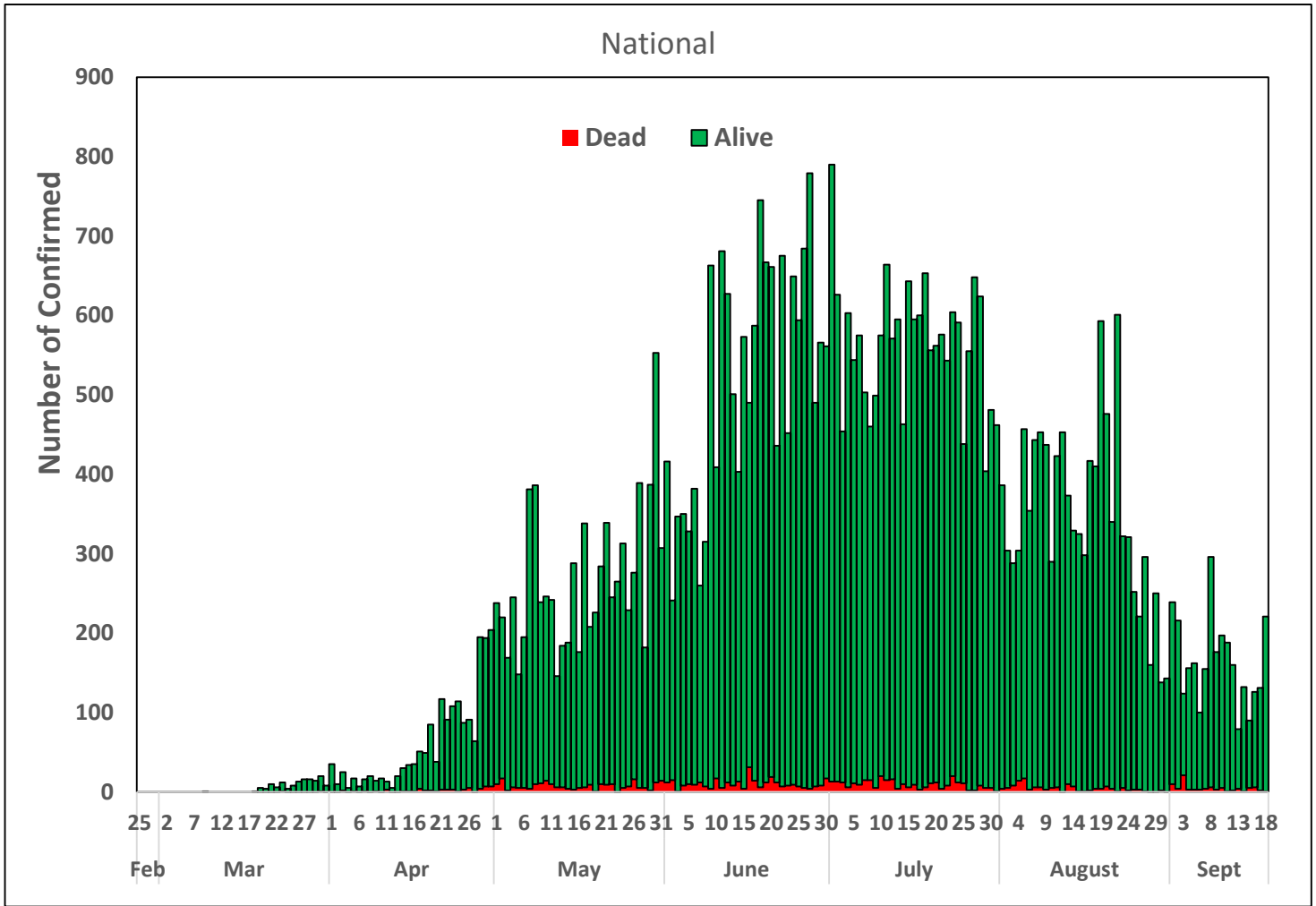
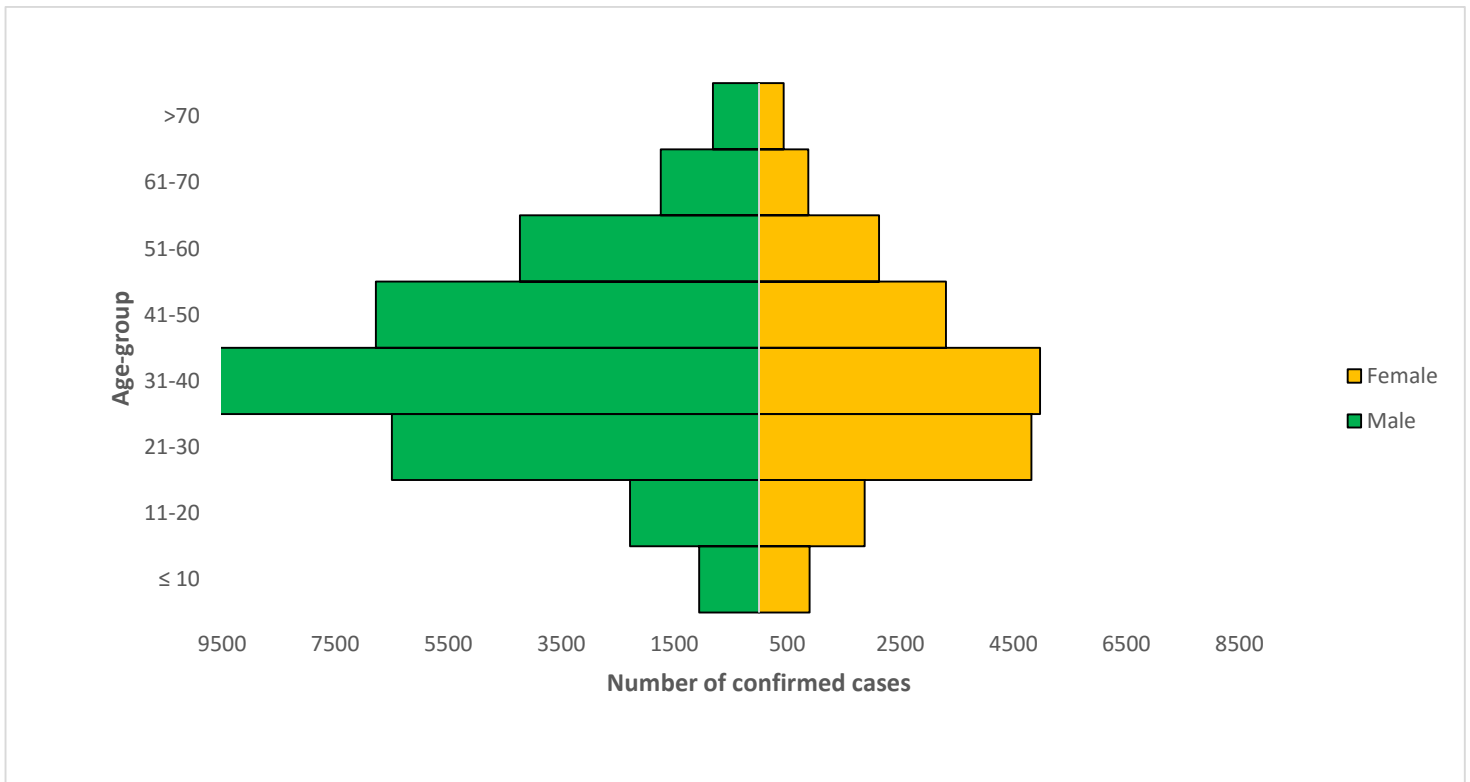


Figure 3: Age-Sex Distribution of Confirmed Cases (WK9 – WK38)



PREPAREDNESS

Since the confirmation of the first case on 27th February 2020, the NCDC has released advisories and statements to help Nigerians and affected groups in particular to respond to the pandemic

- NCDC published second interim guidance – Infection Prevention and Control: [Recommendations during health care provision for suspected and confirmed cases of COVID-19](#)
- NCDC recently published the first edition of a quick reference guide on setting up sample collection centre - [A step by step guide on setting up a sample collection centre](#)
- NCDC has launched an online course on [Infection, Prevention and Control \(IPC\) for COVID-19](#) NCDC eLearning platform
- Ahead of forthcoming elections in the country, NCDC has issued [Guidelines for Conducting Elections During the COVID-19 Outbreak in Nigeria](#).
- To protect our elders, and those with pre-existing medical conditions, NCDC has issued an [Advisory for Vulnerable Groups](#).
- NCDC has released [guidelines on the re-opening of places for worship](#).
- NCDC has released [Strategies to Improve Surveillance for COVID-19 Guidance for States](#)
- The Nigeria Police Force has released COVID-19 operational guidelines for the [Police and other Law Enforcement Agencies in Nigeria](#)
- Guidelines have been issued for the [safe transportation of remains of persons suspected or confirmed to have died of COVID-19](#)
- Information on diagnostics of the COVID-19 virus can be found in our [detailed FAQ document](#).
- To increase our testing capacity, NCDC has issued guidelines for the [integration of private labs](#).
- Guidelines for [businesses and employers](#) have been updated.
- NCDC has updated its [case definition](#) , [community case definition](#) and [case management guide](#).
- NCDC releases periodic [public health advisories](#) to Nigerians on the COVID-19 disease.
- To adhere to post-lockdown measures, NCDC has released an [advisory on the use of face masks](#), as well as information on the [Use of Cloth face masks](#) and [how to make your cloth face masks](#).
- NCDC has released guidelines for the [management of pregnant women and nursing mothers](#) during the pandemic.
- To address burials of loved ones who die from COVID-19, guidelines have been issued to advise on the [management of dead bodies](#).
- For health centres managing cases, the following documents have been released- a guideline for the [Rational Use of Personal Protective Equipment in the care of COVID-19 cases](#).
- As part of plans to increase the testing capacity of the country, the NCDC published a [National Strategy to Scale Up Access to Coronavirus Disease Testing in Nigeria](#) document.
- The Presidential Task Force has published policies and announcements on COVID-19 [available on the website of the Presidency](#) – including presidential addresses, task force updates and information on livelihood and economic support.

RESPONSE

On 28th February 2020, a multi-sectoral Emergency Operations Centre (EOC) was activated at Level 3 – the highest emergency level in Nigeria –led by NCDC in close coordination with the State Public Health EOCs (PHEOC).

COORDINATION

- Continuous support provided for COVID-19 response coordination in all states
- A total of **43** RRTs have been deployed to states by NCDC

EPIDEMIOLOGY/SURVEILLANCE AND POINT OF ENTRY

- **Ongoing collaboration with partners to train Healthcare Workers (HCW) on disease surveillance in 11 states**
- Finalised plans to implement active case search and contact tracing in 20 Local Government Areas (LGAs) in 10 States

LABORATORY

- Ongoing engagement with Ogun and Niger States on activating more laboratories to ensure wider coverage of testing

INFECTION PREVENTION AND CONTROL (IPC)

- **Supported the training of heads of schools on safe re-opening in Lagos State. There were 70 participants from private and 80 participants from public schools**
- Trained 2,454 school teachers at six sites in partnership with State Universal Basic Education Board (SUBEB), Lagelu site – 336 in Oyo State

LOGISTICS

- **Created a standard criteria for donated and procured items**
- Deployed Infection Prevention and Control commodities and materials to Edo State in preparation for the forth coming elections

RISK COMMUNICATION

- **Finalised arrangement with Federal Ministry of Education (FME) to commence the education sector stakeholders meeting in all six geopolitical zones**
- Developed and shared advisory on on safe school reopening to all states

NEXT STEPS

- **New distribution chart for Ministries, Departments and Agencies (MDA) to be generated by the logistics pillar**
- Train Nigeria security services focal persons
- Support pillars in the development of research proposals in line with the approved Research Agenda for the EOC
- Plan engagement meeting with religious leaders
- Conduct training on sample collection, packaging and transportation
- Continue to support MDAs to develop plans and guidelines, and advocate for resources to facilitate implementation
- Finalise the draft guidelines on intensified surveillance in 'silent LGAs' across the country (LGAs that have not reported a single suspected case)

INFORMATION RESOURCES

- Nigeria Centre for Disease Control: www.covid19.ncdc.gov.ng | www.ncdc.gov.ng
- Nigerian Presidency Website on COVID-19: www.statehouse.gov.ng/COVID19
- Africa CDC: www.africa.cdc.org
- WHO Coronavirus Disease (COVID-19) Dashboard (source for global updates) - <https://covid19.who.int/>