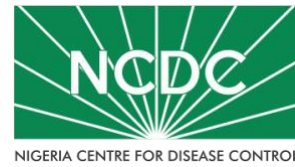


# COVID-19 SITUATION REPORT

## SITUATION REPORT 182

Friday, 28<sup>th</sup> August 2020



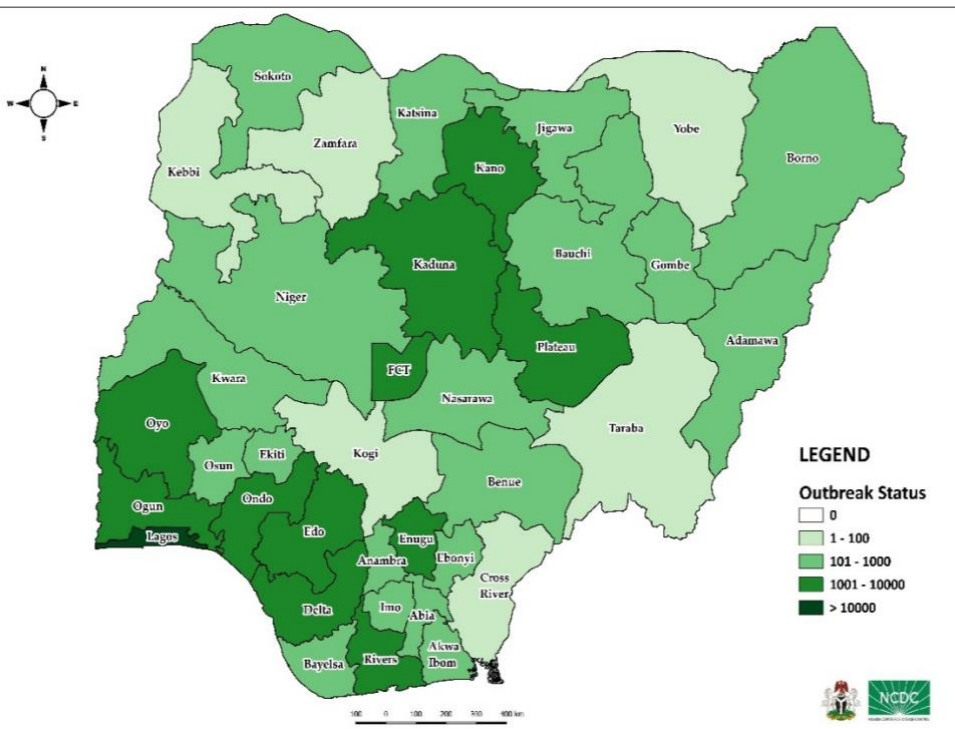
DATA AS REPORTED AND ACCURATE BY NCDC AS AT MIDNIGHT 28<sup>TH</sup> AUGUST 2020

### HIGHLIGHTS

- One hundred and sixty (**160**) confirmed cases were reported in the last 24 hours from **15** states – Plateau (44), Lagos (27), Katsina (18), Edo (15), FCT (14), Ondo (10), Oyo (9), Kwara (6), Abia (4), Nasarawa (4), Kano (3), Ekiti (2), Kaduna (2), Kebbi (1) and Ogun (1).
- Two hundred and ninety-one (**291**) discharges have been reported in the last 24 hours in **15** states – Ekiti (50), FCT (38), Kaduna (37), Oyo (34), Plateau (25), Edo (20), Kano (20), Ondo (15), Bayelsa (14), Ogun (12), Osun (11), Rivers (7), Borno (4), Cross River (3) and Lagos (1).
- No death was reported in the last 24 hours
- All **36** states in Nigeria, and the FCT, have reported a confirmed case.

### STATE OF THE NATION

Figure 1: Map of Nigeria showing 36 states and FCT affected by COVID-19



### SITUATION UPDATES

Total (New in the last 24 hours)

SAMPLES TESTED

**398,304 (3,780)**

CONFIRMED CASES

**53,477 (160)**

AFFECTED STATES INCLUDING FCT

**37**

DISCHARGED CASES

**41,017 (291)**

CONFIRMED FATALITIES

**1,011 (0) – 1.9% CFR**

DEMOGRAPHICS

MALE – 34,059 (**64%**)

FEMALE – 19,418 (**36%**)

MOST AFFECTED AGE GROUP

31 - 40 (**25%**)

PERSONS OF INTEREST

**11,622 (Total)**

**11,546 (99.3% - Exceeded Follow Up)**

PROVENANCE

TRAVEL HISTORY – **850 (1%)**

CONTACTS – **12,692 (24%)**

UNKNOWN EXPOSURE – **39,935 (75%)**

GLOBAL UPDATES

TOTAL NUMBER OF CASES

**24,299,923 (827,730 deaths)**

COUNTRIES & TERRITORIES AFFECTED

**216\***

\*Excluding the 2 International Conveyance

## GENERAL FACT SHEET – DATA AS AT 28<sup>TH</sup> AUGUST 2020

Table 1: States with reported laboratory-confirmed COVID-19 cases, recoveries, deaths and days since last reported case

STATES	CONFIRMED CASES		DISCHARGED CASES		DEATHS		TOTAL ACTIVE CASES	DAYS SINCE LAST REPORTED CASE
	TOTAL	NEW	TOTAL	NEW	TOTAL	NEW		
Lagos	18,083	27	15,228	1	202	0	2,653	0
FCT	5,108	14	1,510	38	50	0	3,548	0
Oyo	3,100	9	1,952	34	37	0	1,111	0
Edo	2,570	15	2,289	20	100	0	181	0
Plateau	2,374	44	1,261	25	29	0	1,084	0
Rivers	2,128	0	1,942	7	57	0	129	1
Kaduna	2,100	2	1,916	37	12	0	172	0
Delta	1,730	0	1,540	0	47	0	143	1
Kano	1,725	3	1,527	20	54	0	144	0
Ogun	1,638	1	1,481	12	26	0	131	0
Ondo	1,534	10	1,360	15	31	0	143	0
Enugu	1,142	0	907	0	21	0	214	1
Ebonyi	971	0	931	0	27	0	13	1
Kwara	956	6	773	0	25	0	158	0
Katsina	789	18	457	0	24	0	308	0
Osun	775	0	722	11	16	0	37	1
Abia	763	4	669	0	7	0	87	0
Borno	740	0	667	4	36	0	37	5
Gombe	722	0	609	0	23	0	90	1
Bauchi	657	0	548	0	14	0	95	1
Imo	526	0	192	0	11	0	323	2
Benue	451	0	141	0	9	0	301	4
Nasarawa	431	4	298	0	12	0	121	0
Bayelsa	378	0	345	14	21	0	12	3
Jigawa	322	0	308	0	11	0	3	43
Akwa Ibom	278	0	229	0	8	0	41	1
Ekiti	251	2	183	50	4	0	64	0
Niger	241	0	214	0	12	0	15	1
Adamawa	217	0	159	0	15	0	43	4
Anambra	207	0	159	0	18	0	30	2
Sokoto	158	0	138	0	16	0	4	5
Kebbi	93	1	82	0	8	0	3	0
Taraba	87	0	73	0	5	0	9	3
Cross River	82	0	73	3	8	0	1	4
Zamfara	78	0	72	0	5	0	1	8
Yobe	67	0	59	0	8	0	0	29
Kogi	5	0	3	0	2	0	0	56
<b>Total</b>	<b>53,477</b>	<b>160</b>	<b>41,017</b>	<b>291</b>	<b>1,011</b>	<b>0</b>	<b>11,449</b>	

States, including FCT, are arranged in descending order by number of total confirmed cases and then alphabetical order

## SELECTED CHARTS

Figure 2: Daily Epidemic Curve of Confirmed Cases (WK9 – WK35)

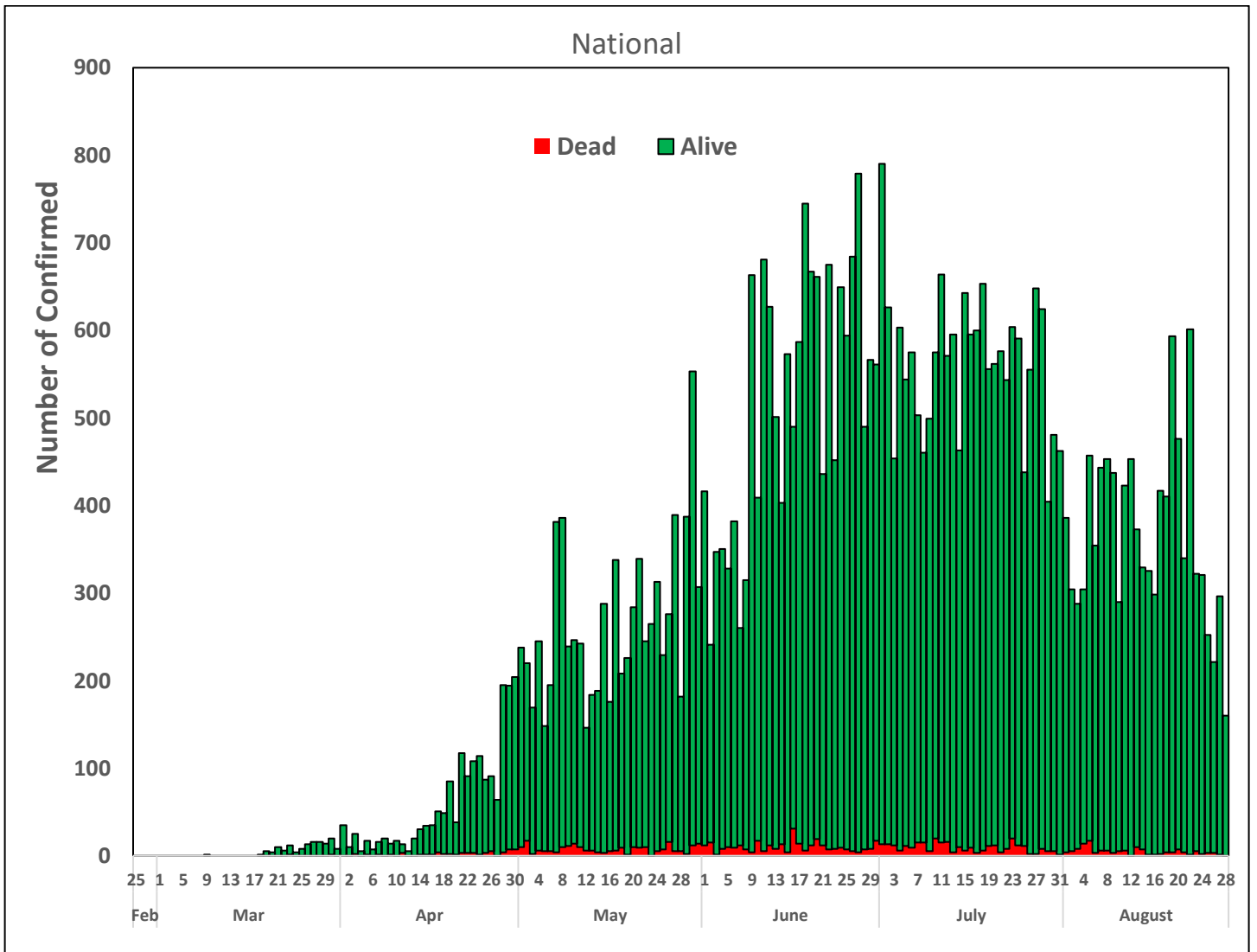
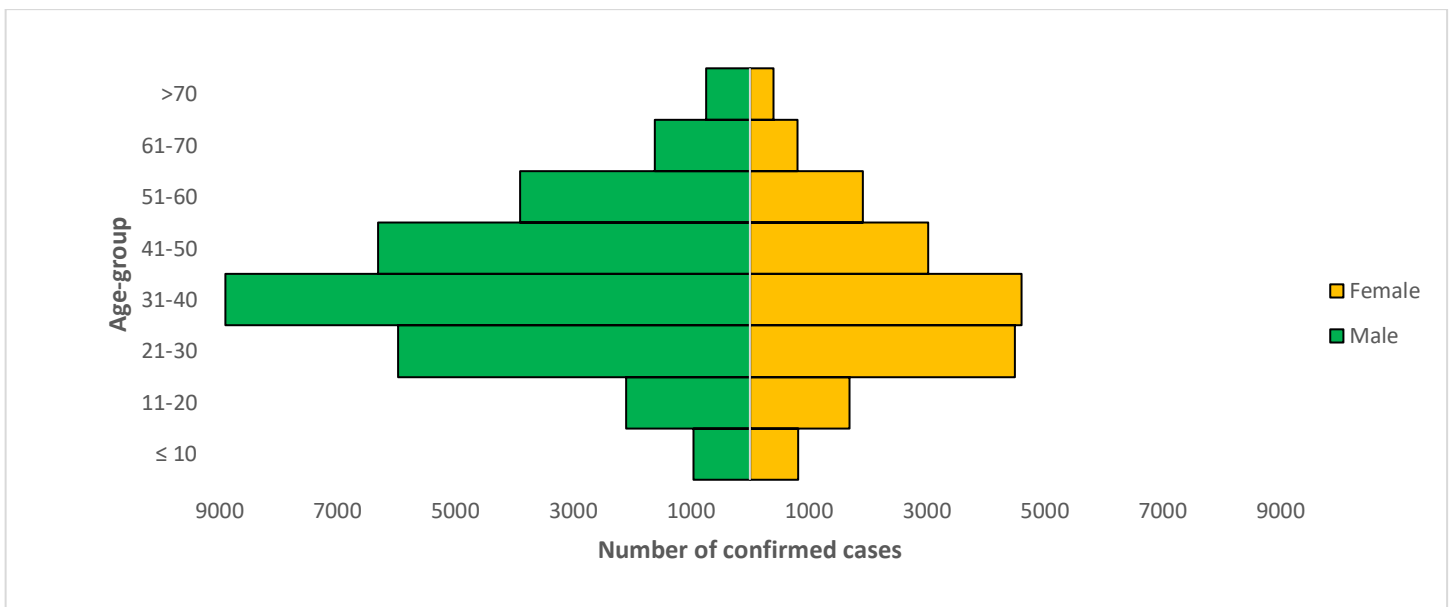


Figure 3: Age-Sex Distribution of Confirmed Cases (WK9 – WK35)



## PREPAREDNESS

Since the confirmation of the first case on 27<sup>th</sup> February 2020, the NCDC has released advisories and statements to help Nigerians and affected groups in particular to respond to the pandemic

- NCDC recently published the first edition of a quick reference guide on setting up sample collection centre - [A step by step guide on setting up a sample collection centre](#)
- NCDC has launched an online course on [Infection, Prevention and Control \(IPC\) for COVID-19](#) NCDC eLearning platform
- Ahead of forthcoming elections in the country, NCDC has issued [Guidelines for Conducting Elections During the COVID-19 Outbreak in Nigeria](#).
- To protect our elders, and those with pre-existing medical conditions, NCDC has issued an [Advisory for Vulnerable Groups](#).
- NCDC has released [guidelines on the re-opening of places for worship](#).
- NCDC has released [Strategies to Improve Surveillance for COVID-19 Guidance for States](#)
- The Nigeria Police Force has released COVID-19 operational guidelines for the [Police and other Law Enforcement Agencies](#) in Nigeria
- Guidelines have been issued for the [safe transportation of remains of persons suspected or confirmed to have died of COVID-19](#)
- Information on diagnostics of the COVID-19 virus can be found in our [detailed FAQ document](#).
- To increase our testing capacity, NCDC has issued guidelines for the [integration of private labs](#).
- Guidelines for [businesses and employers](#) have been updated.
- NCDC has updated its [case definition](#) , [community case definition](#) and [case management guide](#).
- NCDC releases periodic [public health advisories](#) to Nigerians on the COVID-19 disease.
- To adhere to post-lockdown measures, NCDC has released an [advisory on the use of face masks](#), as well as information on the [Use of Cloth face masks](#) and [how to make your cloth face masks](#).
- NCDC has released guidelines for the [management of pregnant women and nursing mothers](#) during the pandemic.
- To address burials of loved ones who die from COVID-19, guidelines have been issued to advise on the [management of dead bodies](#).
- For health centres managing cases, the following documents have been released- a guideline for the [Rational Use of Personal Protective Equipment in the care of COVID-19 cases](#).
- As part of plans to increase the testing capacity of the country, the NCDC published a [National Strategy to Scale Up Access to Coronavirus Disease Testing in Nigeria](#) document.
- The Presidential Task Force has published policies and announcements on COVID-19 [available on the website of the Presidency](#) – including presidential addresses, task force updates and information on livelihood and economic support.

## RESPONSE

On 28<sup>th</sup> February 2020, a multi-sectoral Emergency Operations Centre (EOC) was activated at Level 3 – the highest emergency level in Nigeria –led by NCDC in close coordination with the State Public Health EOCs (PHEOC).

- **Engaged five (5) South West States on automation of release of negative results**
- **Completed optimisation and biosafety cabinet certification in Bayelsa State molecular laboratory in Yenagoa**
- **Completed clinicians sensitisation workshop in University of Abuja Teaching Hospital (UATH) Gwagwalada, FCT**
- **Issued additional laboratory commodities and supplies to Kebbi States**
- **Engaged with the Nigeria Governors Forum and Commissioners for Information for synergy of effort in Risk Communication and Community Engagement (RCCE)**
- **Deployed additional Rapid Response Team (RRT) Kits to Kano, Katsina, Kebbi, Anambra, Akwa Ibom and Bayelsa States**

- Currently providing technical and Information, education and Communication (IECs) material support to Bauchi state
- All education materials can be found via [www.covid19.ncdc.gov.ng](http://www.covid19.ncdc.gov.ng)