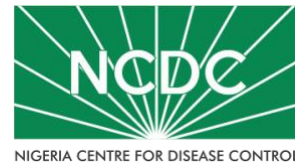


COVID-19 SITUATION REPORT

SITUATION REPORT 135

Sunday, 12TH July 2020



NIGERIA CENTRE FOR DISEASE CONTROL

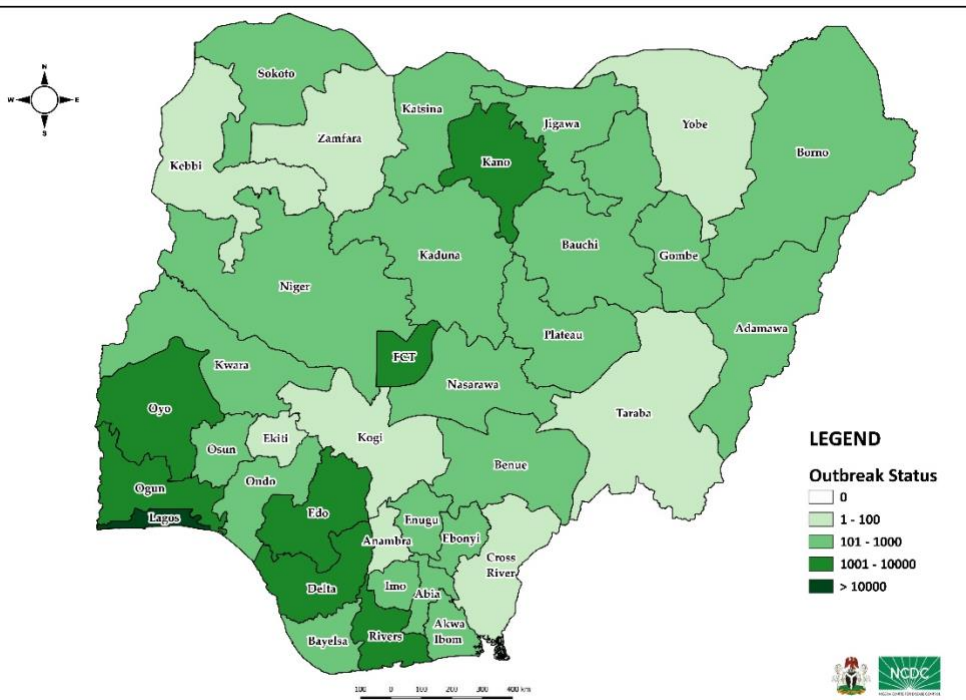
DATA AS REPORTED AND ACCURATE BY NCDC AS AT MIDNIGHT 12TH JULY 2020

HIGHLIGHTS

- Five hundred and seventy-one (**571**) confirmed cases were reported in the last 24 hours from **20** states – Lagos (152), Ebonyi (108), Edo (53), Ondo (46), FCT (38), Oyo (20), Kwara (19), Plateau (17), Bayelsa (14), Ekiti (14), Katsina (14), Osun (14), Akwa Ibom (11), Kaduna (11), Rivers (11), Niger (10), Ogun (7), Kano (6), Cross River (4) and Bauchi (2).
- Three hundred and forty-four (**344**) cases were discharged in the last 24 hours in **14** states – Lagos (111), Enugu (59), Edo (45), Ogun (31), FCT (26), Oyo (16), Ondo (14), Ebonyi (11), Kwara (11), Bauchi (7), Kaduna (5), Kebbi (4), Plateau (2) and Rivers (2).
- Sixteen (**16**) deaths were recorded in the last 24 hours in **four** states – Lagos (12), FCT (2), Enugu (1) and Gombe (1).
- All **36** states in Nigeria, and the FCT, have reported a confirmed case.

STATE OF THE NATION

Figure 1: Map of Nigeria showing 36 states and FCT affected by COVID-19



SITUATION UPDATES

Total (New in the last 24 hours)

SAMPLES TESTED

183,294 (2,046)

CONFIRMED CASES

32,558 (571)

AFFECTED STATES INCLUDING FCT

37

DISCHARGED CASES

13,447 (344)

CONFIRMED FATALITIES

740 (16) – 2.3% CFR

DEMOGRAPHICS

MALE – 21,385 (66%)

FEMALE – 11,173 (34%)

MOST AFFECTED AGE GROUP

31 - 40 (24%)

PERSONS OF INTEREST

10,881 (Total)

10,781 (99.1% - Exceeded Follow Up)

PROVENANCE

TRAVEL HISTORY – 481 (1%)

CONTACTS – 8,148 (25%)

UNKNOWN EXPOSURE – 23,929 (74%)

GLOBAL UPDATES

TOTAL NUMBER OF CASES

12,552,765 (561,617 deaths)

COUNTRIES & TERRITORIES AFFECTED*

213

*Excluding the 2 International Conveyances

GENERAL FACT SHEET – DATA AS AT 12th JULY 2020

Table 1: States with reported laboratory-confirmed COVID-19 cases, recoveries, deaths and days since last reported case

STATES	CONFIRMED CASES		DISCHARGED CASES		DEATHS		TOTAL ACTIVE CASES	DAYS SINCE LAST REPORTED CASE
	CUMULATIVE	NEW	CUMULATIVE	NEW	CUMULATIVE	NEW		
Lagos	12,427	152	1,897	111	172	12	10,358	0
FCT	2,576	38	773	26	38	2	1,765	0
Edo	1,731	53	974	45	57	0	700	0
Oyo	1,726	20	1,008	16	19	0	699	0
Rivers	1,368	11	853	2	46	0	469	0
Delta	1,359	0	583	0	31	0	745	1
Kano	1,309	6	1,030	0	52	0	227	0
Ogun	1,087	7	736	31	22	0	329	0
Kaduna	989	11	641	5	12	0	336	0
Ondo	716	46	138	14	21	0	557	0
Katsina	669	14	441	0	23	0	205	0
Ebonyi	616	108	508	11	6	0	102	0
Borno	586	0	455	0	35	0	96	2
Plateau	533	17	244	2	16	0	273	0
Gombe	530	0	407	0	22	1	101	1
Bauchi	521	2	505	7	13	0	3	0
Enugu	476	0	322	59	15	1	139	1
Abia	405	0	295	0	3	0	107	1
Imo	386	0	69	0	8	0	309	1
Kwara	330	19	179	11	12	0	139	0
Jigawa	321	0	308	0	11	0	2	2
Bayelsa	313	14	153	0	18	0	142	0
Osun	245	14	84	0	7	0	154	0
Nasarawa	244	0	113	0	8	0	123	1
Sokoto	153	0	135	0	16	0	2	8
Akwa Ibom	145	11	71	0	3	0	71	0
Niger	145	10	108	0	7	0	30	0
Benue	121	0	35	0	6	0	80	5
Adamawa	110	0	71	0	7	0	32	1
Anambra	93	0	65	0	9	0	19	4
Kebbi	86	0	67	4	7	0	12	5
Zamfara	76	0	71	0	5	0	0	55
Ekiti	63	14	40	0	2	0	21	0
Yobe	62	0	51	0	8	0	3	3
Taraba	27	0	11	0	0	0	16	5
Cross River	9	4	3	0	1	0	5	0
Kogi	5	0	3	0	2	0	0	9
Total	32,558	571	13,447	344	740	16	18,371	

States, including FCT, are arranged in descending order by number of total confirmed cases and then alphabetical order

SELECTED CHARTS

Figure 2: Daily Epidemic Curve of Confirmed Cases (WK9 – WK28)

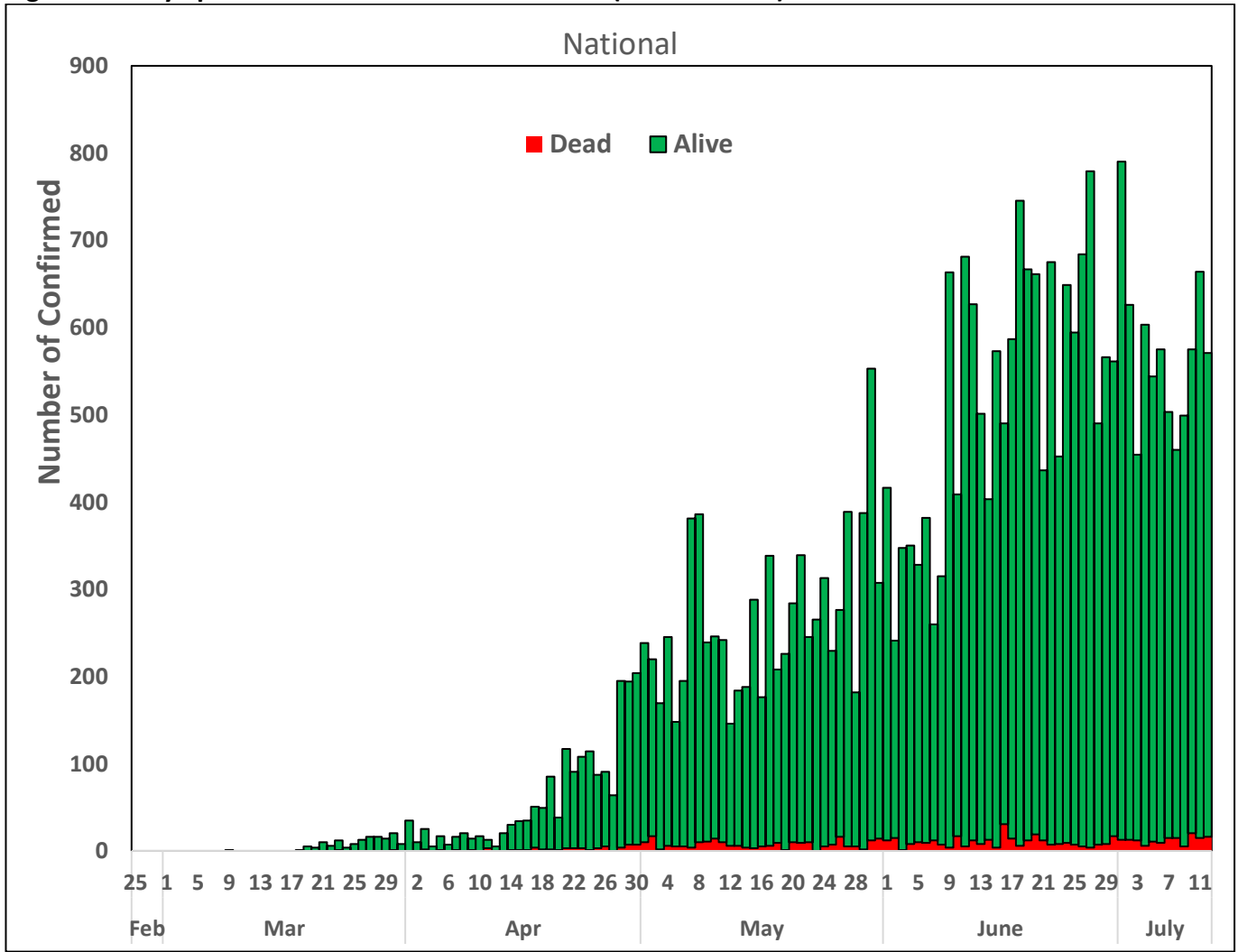
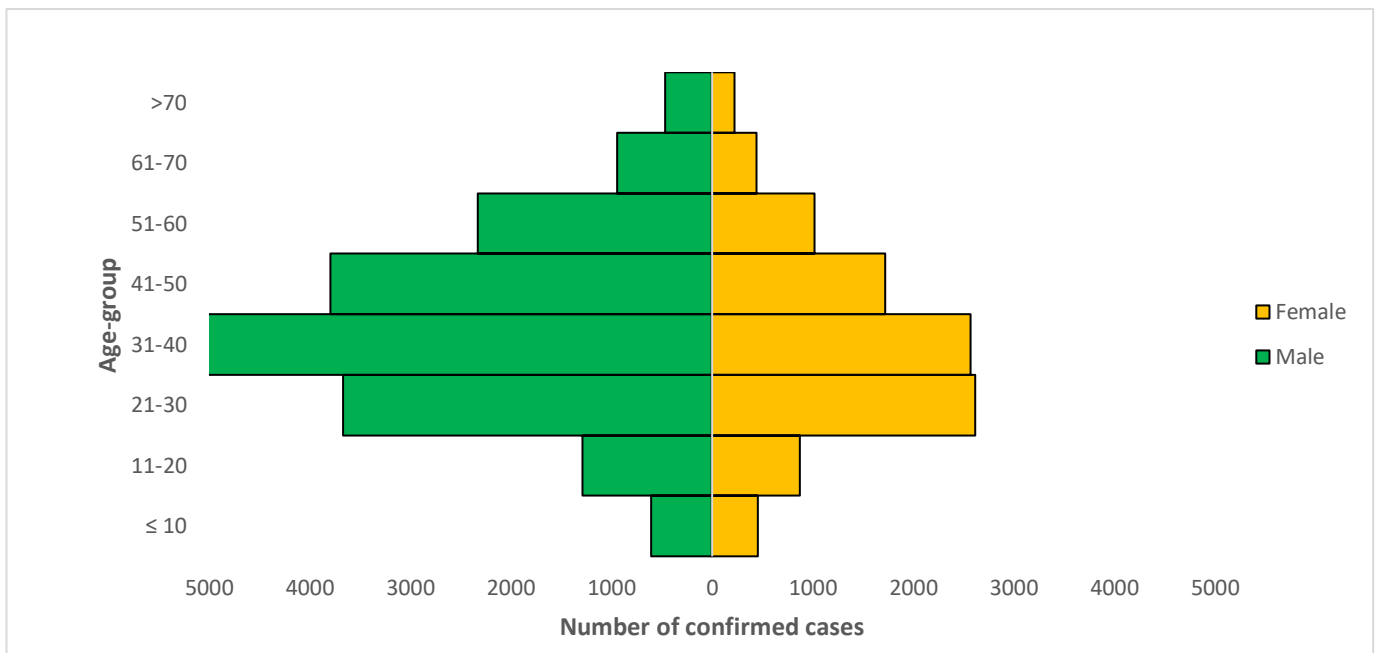


Figure 3: Age-Sex Distribution of Confirmed Cases (WK9 – WK28)



PREPAREDNESS

Since the confirmation of the first case on 27th February 2020, the NCDC has released advisories and statements to help Nigerians and affected groups in particular to respond to the pandemic

- NCDC has launched an online course on [Infection, Prevention and Control \(IPC\) for COVID-19](#) NCDC eLearning platform
- Ahead of forthcoming elections in the country, NCDC has issued [Guidelines for Conducting Elections During the COVID-19 Outbreak in Nigeria](#).
- To protect our elders, and those with pre-existing medical conditions, NCDC has issued an [Advisory for Vulnerable Groups](#).
- NCDC has released [guidelines on the re-opening of places for worship](#).
- The Nigeria Police Force has released COVID-19 operational guidelines for the [Police and other Law Enforcement Agencies in Nigeria](#)
- NCDC and the Department of Hospital Services (Federal Ministry of Health) have updated the [case management guidelines](#) (version 3) with reviewed changes such as the discharge criteria and medication being used for the treatment of cases
- Guidelines have been issued for the [safe transportation of remains of persons suspected or confirmed to have died of COVID-19](#)
- Information on diagnostics of the COVID-19 virus can be found in our [detailed FAQ document](#).
- To increase our testing capacity, NCDC has issued guidelines for the [integration of private labs](#).
- Guidelines for [businesses and employers](#) have been updated.
- NCDC has updated its [case definition](#) , [community case definition](#) and [case management guide](#).
- NCDC releases periodic [public health advisories](#) to Nigerians on the COVID-19 disease.
- To adhere to post-lockdown measures, NCDC has released an [advisory on the use of face masks](#), as well as information on the [Use of Cloth face masks](#) and [how to make your cloth face masks](#).
- NCDC has released guidelines for the [management of pregnant women and nursing mothers](#) during the pandemic.
- To address burials of loved ones who die from COVID-19, guidelines have been issued to advise on the [management of dead bodies](#).
- For health centres managing cases, the following documents have been released- a guideline for the [Rational Use of Personal Protective Equipment in the care of COVID-19 cases](#).
- As part of plans to increase the testing capacity of the country, the NCDC published a [National Strategy to Scale Up Access to Coronavirus Disease Testing in Nigeria](#) document.
- The Presidential Task Force has published policies and announcements on COVID-19 [available on the website of the Presidency](#) – including presidential addresses, task force updates and information on livelihood and economic support.

RESPONSE

On 28th February 2020, a multi-sectoral Emergency Operations Centre (EOC) was activated at Level 3 – the highest emergency level in Nigeria –led by NCDC in close coordination with the State Public Health EOCs (PHEOC).

- **Ongoing support to states to expand human resource capacity for contact tracing**
- **Completed onsite training on sample collection for personnel in Katsina State**
- **Completed optimisation of State Specialist Hospital Polymerase Chain Reaction (PCR) laboratory, Amachara in Abia State**
- **Commenced the roll out of one-week training of health care workers in Akwa-Ibom State**
- **Ongoing collaboration with Logistic Management Coordination Units (LMCUs) in states to collect utilisation data**
- **In line with ongoing clinical research, data collection commenced in treatment centres in Gombe State**

- **Ongoing engagement with stakeholders on the planned school reopening preparedness strategy**
- Conducted assessment of two additional treatment centres in Kaduna State
- Ongoing capacity building of states' Infection Prevention and Control (IPC) trainers through webinars
- Ongoing monitoring of stock status of commodities deployed to laboratories and treatment centres to forestall stockout of critical commodities
- Obtained commitment from stakeholders on the rapid resolution of call centre challenges across states
- All education materials can be found via www.covid19.ncdc.gov.ng