

COVID-19 SITUATION REPORT

SITUATION REPORT 162

Saturday, 8th August 2020



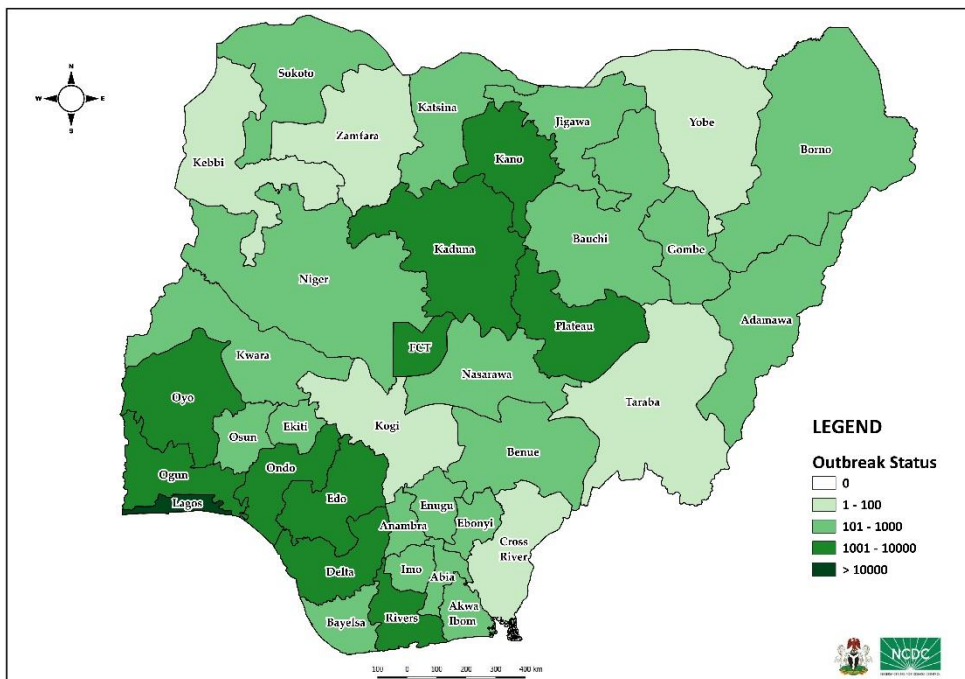
DATA AS REPORTED AND ACCURATE BY NCDC AS AT MIDNIGHT 8TH AUGUST 2020

HIGHLIGHTS

- Four hundred and fifty-three (**453**) confirmed cases were reported in the last 24 hours from **21** states – FCT (75), Lagos (71), Benue (53), Delta (39), Borno (30), Enugu (25), Plateau (24), Osun (20), Abia (19), Oyo (17), Kaduna (16), Ebonyi (13), Kano (13), Edo (9), Ogun (9), Kwara (7), Ondo (6), Gombe (3), Ekiti (2), Akwa Ibom (1) and Rivers (1).
- Four hundred and seven (**407**) cases were discharged in the last 24 hours in **13** states – Ondo (100), Kwara (63), Benue (45), Rivers (32), Gombe (29), Kaduna (27), Akwa Ibom (26), Ogun (15), FCT (10), Osun (6), Delta (5), Anambra (4) and Lagos (3).
- Six (**6**) deaths were recorded in the last 24 hours in **five** states – Benue (2), Enugu (1), FCT (1), Lagos (1) and Ondo (1).
- All **36** states in Nigeria, and the FCT, have reported a confirmed case.

STATE OF THE NATION

Figure 1: Map of Nigeria showing 36 states and FCT affected by COVID-19



SITUATION UPDATES

Total (New in the last 24 hours)

SAMPLES TESTED

317,496 (2,864)

CONFIRMED CASES

46,140 (453)

AFFECTED STATES INCLUDING FCT

37

DISCHARGED CASES

33,044 (407)

CONFIRMED FATALITIES

942 (6) – 2.0% CFR

DEMOGRAPHICS

MALE – 29,675 (64%)

FEMALE – 16,465 (36%)

MOST AFFECTED AGE GROUP

31 - 40 (25%)

PERSONS OF INTEREST

11,241 (Total)

11,153 (99.2% - Exceeded Follow Up)

PROVENANCE

TRAVEL HISTORY – 847 (2%)

CONTACTS – 11,445 (25%)

UNKNOWN EXPOSURE – 33,848 (73%)

GLOBAL UPDATES

TOTAL NUMBER OF CASES

19,187,943 (716,075 deaths)

COUNTRIES & TERRITORIES AFFECTED*

214

*Excluding the 2 International Conveyance

GENERAL FACT SHEET – DATA AS AT 8th AUGUST 2020

Table 1: States with reported laboratory-confirmed COVID-19 cases, recoveries, deaths and days since last reported case

STATES	CONFIRMED CASES		DISCHARGED CASES		DEATHS		TOTAL ACTIVE CASES	DAYS SINCE LAST REPORTED CASE
	TOTAL	NEW	TOTAL	NEW	TOTAL	NEW		
Lagos	15,768	71	13,122	3	193	1	2,453	0
FCT	4,376	75	1,247	10	46	1	3,083	0
Oyo	2,860	17	1,402	0	31	0	1,427	0
Edo	2,376	9	2,095	10	96	0	185	0
Rivers	1,939	1	1,641	32	53	0	245	0
Kano	1,622	13	1,303	0	54	0	265	0
Delta	1,596	39	1,409	5	43	0	144	0
Kaduna	1,566	16	1,379	27	12	0	175	0
Ogun	1,439	9	1,234	15	24	0	181	0
Plateau	1,421	24	629	0	20	0	772	0
Ondo	1,284	6	754	100	28	1	502	0
Enugu	905	25	485	0	19	1	401	0
Ebonyi	851	13	793	0	26	0	32	0
Kwara	833	7	406	63	21	0	406	0
Katsina	746	0	457	0	24	0	265	5
Borno	682	30	569	0	35	0	78	0
Abia	644	19	517	0	5	0	122	0
Gombe	629	3	559	29	23	0	47	0
Osun	625	20	335	6	13	0	277	0
Bauchi	576	0	526	0	14	0	36	1
Imo	476	0	148	0	10	0	318	1
Benue	409	53	109	45	9	2	291	0
Nasarawa	367	0	223	0	8	0	136	1
Bayelsa	346	0	303	0	21	0	22	1
Jigawa	322	0	308	0	11	0	3	23
Akwa Ibom	235	1	197	26	8	0	30	0
Niger	226	0	165	0	12	0	49	4
Adamawa	185	0	86	0	12	0	87	1
Ekiti	161	2	76	0	2	0	83	0
Sokoto	154	0	138	0	16	0	0	14
Anambra	142	0	119	36	18	0	5	3
Kebbi	90	0	82	0	8	0	0	18
Zamfara	77	0	71	0	5	0	1	21
Taraba	72	0	55	0	4	0	13	4
Cross River	68	0	42	0	8	0	18	3
Yobe	67	0	57	0	8	0	2	9
Kogi	5	0	3	0	2	0	0	36
Total	46,140	453	33,044	407	942	6	12,154	

States, including FCT, are arranged in descending order by number of total confirmed cases and then alphabetical order

SELECTED CHARTS

Figure 2: Daily Epidemic Curve of Confirmed Cases (WK9 – WK32)

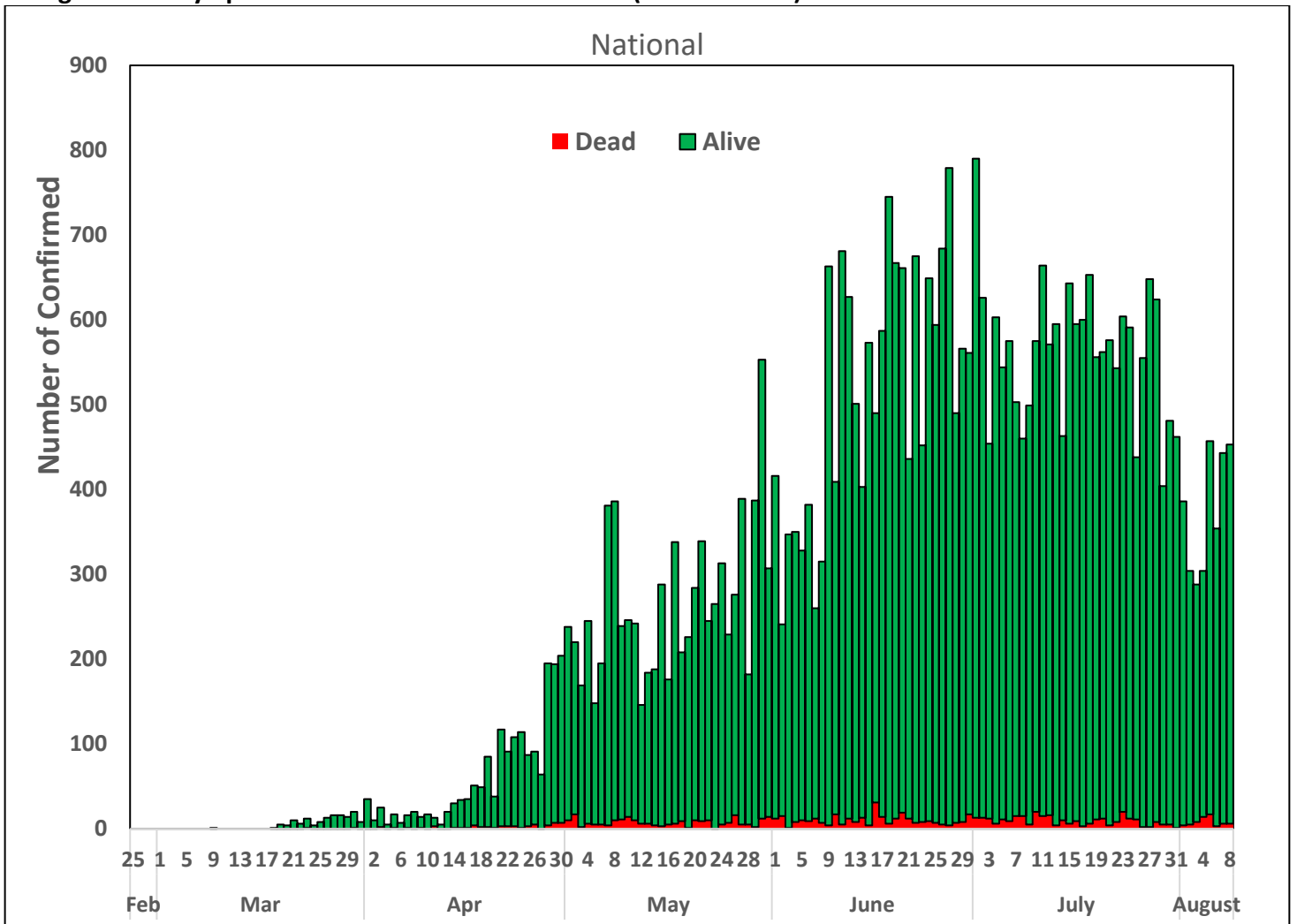
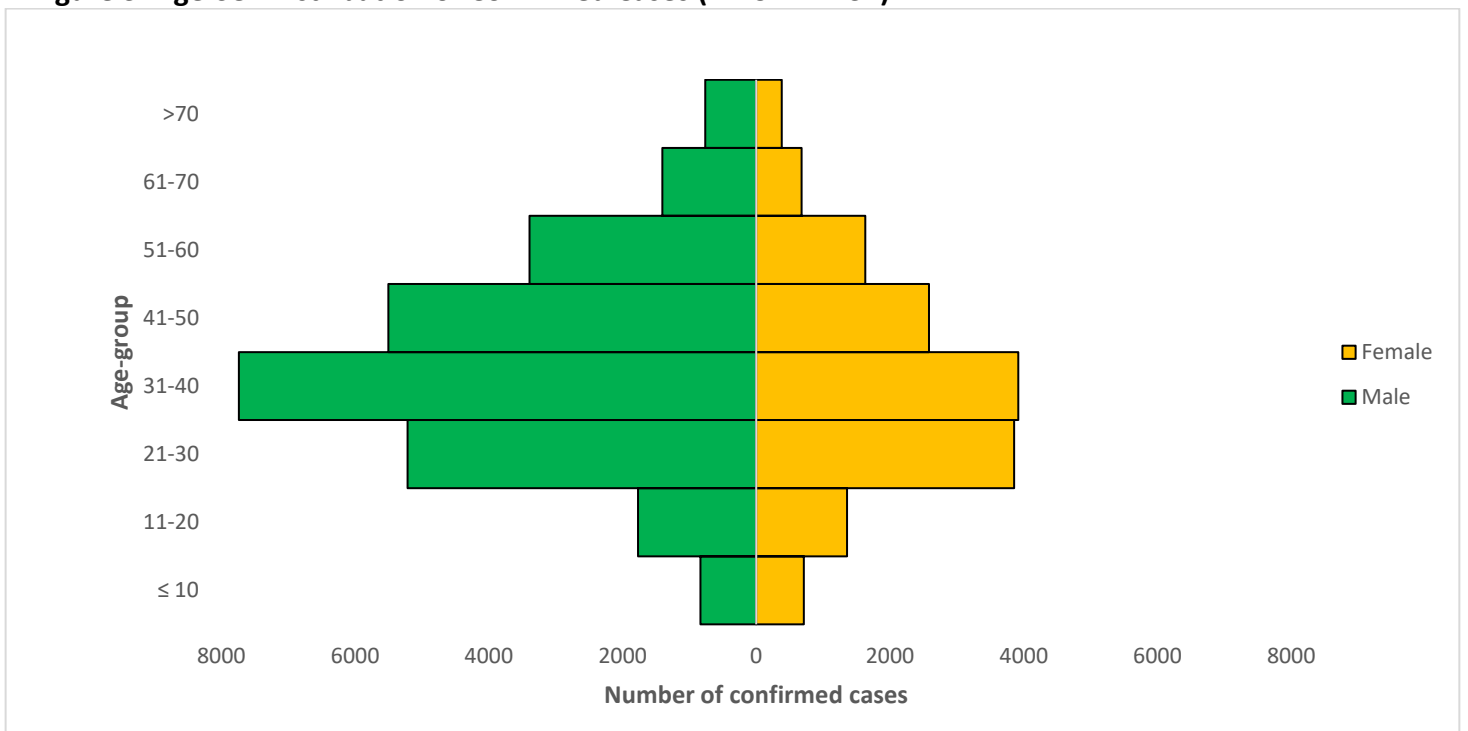


Figure 3: Age-Sex Distribution of Confirmed Cases (WK9 – WK32)



PREPAREDNESS

Since the confirmation of the first case on 27th February 2020, the NCDC has released advisories and statements to help Nigerians and affected groups in particular to respond to the pandemic

- NCDC has launched an online course on [Infection, Prevention and Control \(IPC\) for COVID-19](#) NCDC eLearning platform
- Ahead of forthcoming elections in the country, NCDC has issued [Guidelines for Conducting Elections During the COVID-19 Outbreak in Nigeria](#).
- To protect our elders, and those with pre-existing medical conditions, NCDC has issued an [Advisory for Vulnerable Groups](#).
- NCDC has released [guidelines on the re-opening of places for worship](#).
- NCDC has released [Strategies to Improve Surveillance for COVID-19 Guidance for States](#)
- The Nigeria Police Force has released COVID-19 operational guidelines for the [Police and other Law Enforcement Agencies](#) in Nigeria
- Guidelines have been issued for the [safe transportation of remains of persons suspected or confirmed to have died of COVID-19](#)
- Information on diagnostics of the COVID-19 virus can be found in our [detailed FAQ document](#).
- To increase our testing capacity, NCDC has issued guidelines for the [integration of private labs](#).
- Guidelines for [businesses and employers](#) have been updated.
- NCDC has updated its [case definition](#) , [community case definition](#) and [case management guide](#).
- NCDC releases periodic [public health advisories](#) to Nigerians on the COVID-19 disease.
- To adhere to post-lockdown measures, NCDC has released an [advisory on the use of face masks](#), as well as information on the [Use of Cloth face masks](#) and [how to make your cloth face masks](#).
- NCDC has released guidelines for the [management of pregnant women and nursing mothers](#) during the pandemic.
- To address burials of loved ones who die from COVID-19, guidelines have been issued to advise on the [management of dead bodies](#).
- For health centres managing cases, the following documents have been released- a guideline for the [Rational Use of Personal Protective Equipment in the care of COVID-19 cases](#).
- As part of plans to increase the testing capacity of the country, the NCDC published a [National Strategy to Scale Up Access to Coronavirus Disease Testing in Nigeria](#) document.
- The Presidential Task Force has published policies and announcements on COVID-19 [available on the website of the Presidency](#) – including presidential addresses, task force updates and information on livelihood and economic support.

RESPONSE

On 28th February 2020, a multi-sectoral Emergency Operations Centre (EOC) was activated at Level 3 – the highest emergency level in Nigeria –led by NCDC in close coordination with the State Public Health EOCs (PHEOC).

- **Commenced the S-Trac (sample tracking system) pilot in Niger State**
- **Supported the cascading of step-down training of Infection Prevention and Control (IPC) focal persons in 20 Local Government Areas in Bauchi State**
- **Trained Risk Communication volunteers in Kogi State**
- Received a total of 37 Persons of Interest (POIs)/returnees on the 5th of August 2020, from Sharjah United Arab Emirate
- All POIs/returnees were received, screened and given the travellers kit on arrival at the Nnamdi Azikiwe International Airport Abuja (NAIA)
- All returnees were issued COVID-19 test appointment
- Finalised plans to test run the S-Trac sample transport realtime data platform for specimens on transit across states
- Trained IPC focal persons from all Catholic Health services hospitals in Abuja Archdiocese
- Commenced campaign for World Mask Week
- All education materials can be found via www.covid19.ncdc.gov.ng