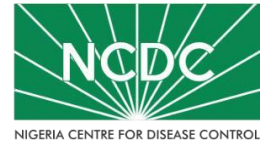


# YELLOW FEVER SITUATION REPORT

Serial Number: 004	April 2025 Monthly Sitrep
Epi Week:	15 - 19 as at 30 <sup>th</sup> April 2025
Reporting Month:	April 2025



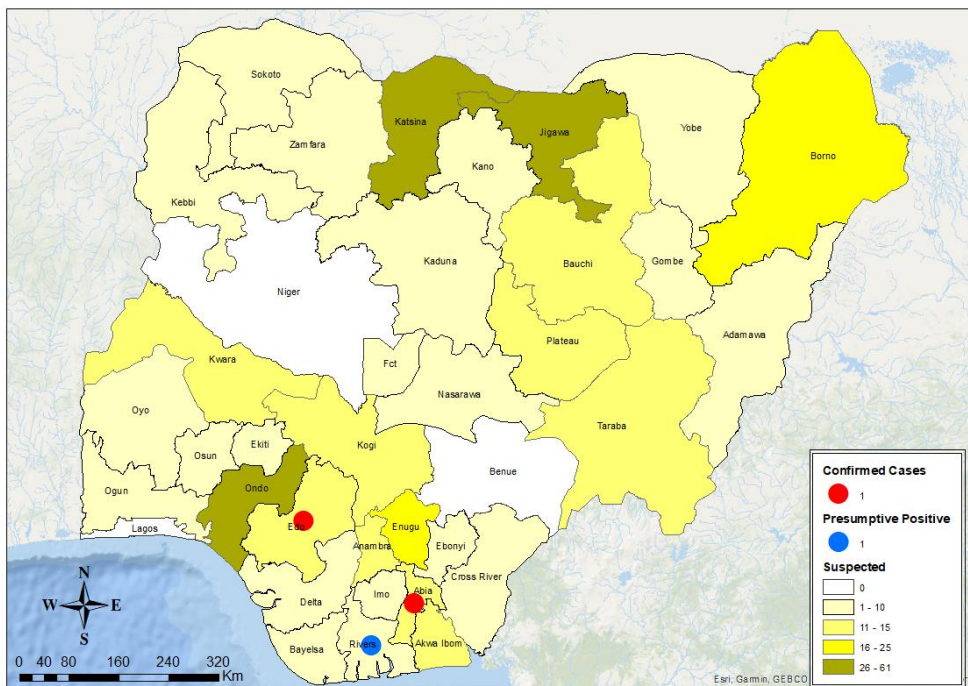
The information contained in this document is confidential, privileged and only for the intended recipient and may not be used, published, or redistributed to the public

## REPORTING MONTH: APRIL 2025

### HIGHLIGHTS

#### REPORTING PERIOD: 1<sup>ST</sup> APRIL 2025 – 30<sup>TH</sup> APRIL 2025

- The Nigeria Centre for Disease Control & Prevention (NCDC) continues to monitor reports of yellow fever cases in Nigeria.
- A total of 460 suspected cases were reported from 252 Local Government Areas (LGAs) across 36 states and the FCT. The states include Abia (11), Adamawa (9), Akwa Ibom (14), Anambra (15), Bauchi (14), Bayelsa (9), Benue (24), Borno (17), Cross River (10), Delta (2), Ebonyi (3), Edo (11), Ekiti (7), Enugu (16), FCT Abuja(1), Gombe (7), Imo (9), Jigawa (61), Kaduna (3), Kano (5), Katsina (57), Kebbi (8), Kogi (14), Kwara (14), Lagos (3), Nasarawa (8), Niger (18), Ogun (5), Ondo (26), Osun (3), Oyo (7), Plateau (11), Rivers (10), Sokoto (5), Taraba (11), Yobe (3), and Zamfara (9).
- **1** Presumptive positive case was reported from University of Benin Teaching Hospital Benin. This case was reported from: **Rivers (1)** [Ahoada West (1)].
- No inconclusive case was recorded.
- **Two (2)** confirmed cases were recorded from Abia (1) [Isiala-Ngwa South (1)] and Edo (1) [Oredo (1)] respectively.
- **No death** was recorded from both suspected and confirmed cases in the reporting month.



**460**  
SUSPECTED  
CASES

**36+ FCT**  
STATES WITH  
SUSPECTED  
CASES

**2**  
CONFIRMED  
CASES

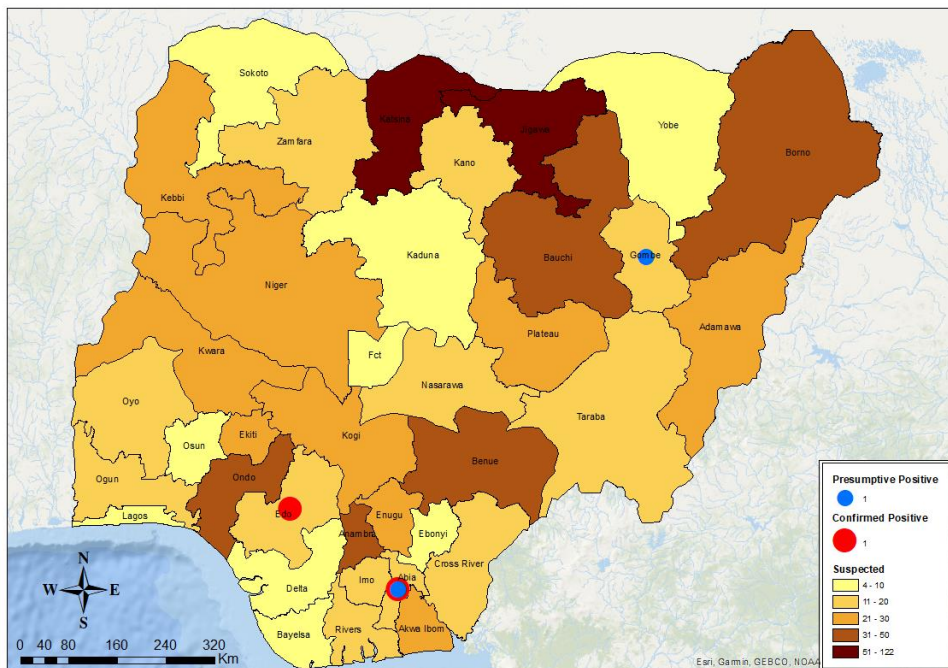
**2**  
STATE WITH  
CONFIRMED  
CASES

**0**  
STATES WITH  
DEATHS IN  
CONFIRMED  
CASES

**0**  
DEATHS IN  
CONFIRMED  
CASES

## CUMULATIVE FOR 1<sup>ST</sup> JANUARY 2025 – 30<sup>TH</sup> APRIL 2025

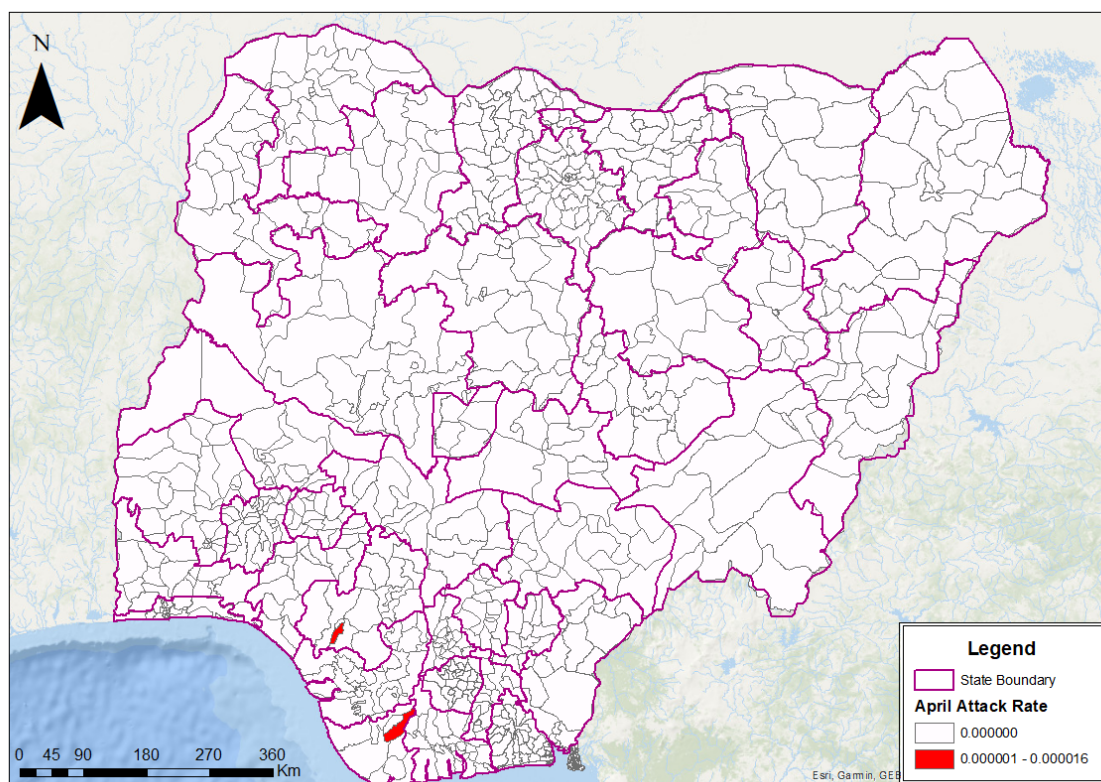
- Cumulatively from 1<sup>st</sup> January 2025 – 30<sup>th</sup> April 2025, a total of 900 suspected cases have been reported from 390 LGAs in the 36 states including the FCT.
- The cases were reported from the following states: Abia (19), Adamawa (22), Akwa Ibom (22), Anambra (37), Bauchi (42), Bayelsa (9), Benue (32), Borno (38), Cross River (15), Delta (7), Ebonyi (4), Edo (19), Ekiti (21), Enugu (28), FCT, Abuja (6), Gombe (13), Imo (18), Jigawa (122), Kaduna (7), Kano (11), Katsina (101), Kebbi (22), Kogi (26), Kwara (25), Lagos (5), Nasarawa (16), Niger (26), Ogun (19), Ondo (49), Osun (10), Oyo (20), Plateau (30), Rivers (16), Sokoto (7), Taraba (20), Yobe (4) and Zamfara (12).
- Three (3)** presumptive positive and **one (1)** inconclusive result were recorded from the Nigeria Laboratory networks.
- These presumptive positives were from UBTH Benin (2) and GSSH Gombe (1) while the **inconclusive** case was from the YDMH Kaduna (1). This case was from Jigawa (1). These samples have been shipped to IP Dakar for confirmation.
- Two (2)** confirmed cases were recorded within the reporting month From Abia (1) [Isiala-Ngwa South (1)] and Edo (1) [Oredo (1)] respectively.
- No death** has been recorded from suspected or confirmed cases [**CFR = 0%**]
- Male to female ratio for suspected cases was **1.2:1** with males 488 (54.2%) and females 412 (45.8%)
- Six hundred and ninety-two (76.8%) of suspected cases were predominantly aged 30 years and below.
- Fifty-nine (6.6%) of 900 suspected cases received at least one dose of the yellow fever vaccine.
- The NCDC coordinates response activities through the National Multi-agency Yellow Fever Technical Working Group (YF TWG).



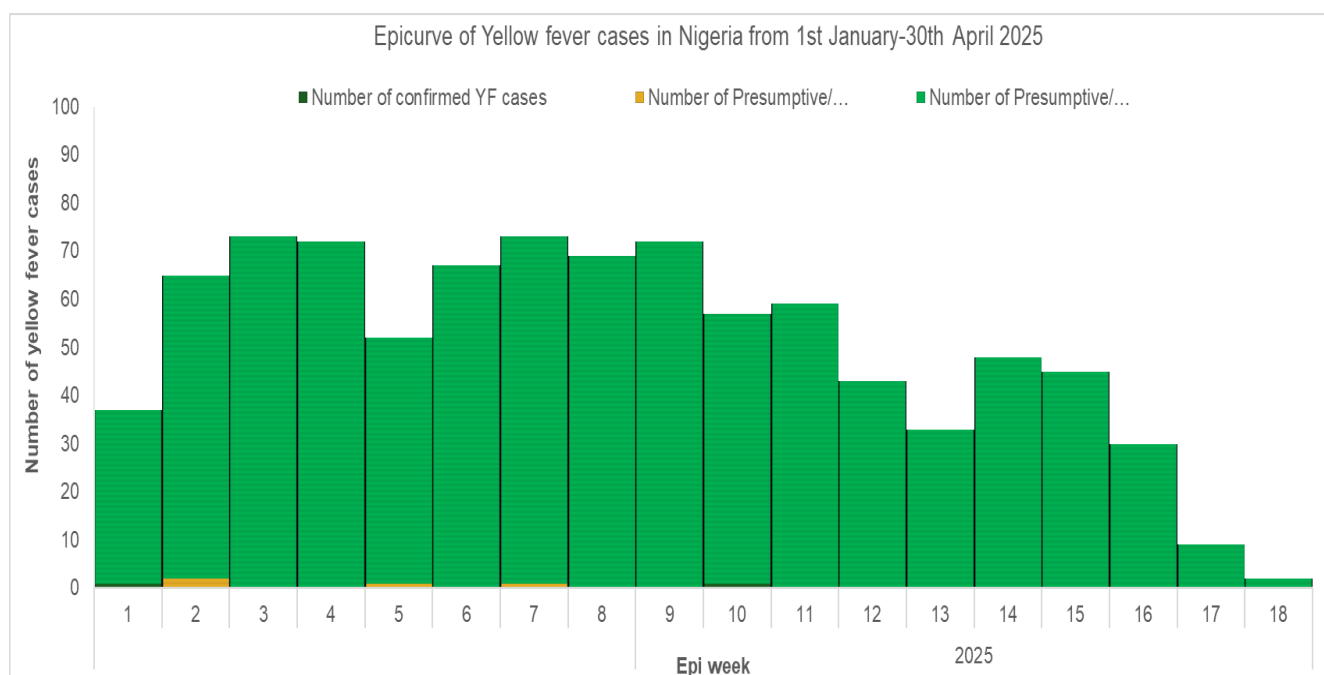
<b>900</b> SUSPECTED CASES	<b>36 + FCT</b> STATES WITH SUSPECTED CASES
<b>2</b> CONFIRMED CASES	<b>2</b> STATES WITH CONFIRMED CASES
<b>0</b> DEATHS IN CONFIRMED CASES	<b>0</b> STATES WITH DEATHS IN CONFIRMED CASES

Table 1: Summary of yellow fever cases in Nigeria from 1<sup>st</sup> January – 30<sup>th</sup> April 2025

State	# Suspected Cases	# LGAs with suspected cases	# LGAs with confirmed cases	Laboratory Results					Deaths	
				Samples positive (IgM) & Inconclusive in NG	LGAs with positive (IgM) & Inconclusive in NG	Confirmed Cases (PCR)	Confirmed Cases (IP Dakar)	Total Confirmed Cases	# Deaths among Confirmed Cases [CFR] (%)	# Deaths among All Cases [CFR](%)
Abia	19	10	1	-	-	-	1	1	-	-
Adamawa	22	12	-	-	-	-	-	-	-	-
Akwa Ibom	22	16	-	-	-	-	-	-	-	-
Anambra	37	16	-	-	-	-	-	-	-	-
Bauchi	42	15		1	1	-	-	-	-	-
Bayelsa	9	5	-	-	-	-	-	-	-	-
Benue	32	12	-	-	-	-	-	-	-	-
Borno	38	18	-	-	-	-	-	-	-	-
Cross River	15	9	-	-	-	-	-	-	-	-
Delta	7	7	-	-	-	-	-	-	-	-
Ebonyi	4	4	-	-	-	-	-	-	-	-
Edo	19	11	1	-	-	-	1	1	-	-
Ekiti	21	13	-	-	-	-	-	-	-	-
Enugu	28	13	-	-	-	-	-	-	-	-
FCT Abuja	6	3	-	-	-	-	-	-	-	-
Gombe	13	7	-	-	-	-	-	-	-	-
Imo	18	12	-	-	-	-	-	-	-	-
Jigawa	122	23	-	1	1	-	-	-	-	-
Kaduna	7	5	-	-	-	-	-	-	-	-
Kano	11	7	-	-	-	-	-	-	-	-
Katsina	101	29	-	-	-	-	-	-	-	-
Kebbi	22	11	-	-	-	-	-	-	-	-
Kogi	26	12	-	-	-	-	-	-	-	-
Kwara	25	13	-	-	-	-	-	-	-	-
Lagos	5	5	-	-	-	-	-	-	-	-
Nasarawa	16	8	-	-	-	-	-	-	-	-
Niger	26	9	-	-	-	-	-	-	-	-
Ogun	19	9	-	-	-	-	-	-	-	-
Ondo	49	12	-	-	-	-	-	-	-	-
Osun	10	9	-	-	-	-	-	-	-	-
Oyo	20	13	-	-	-	-	-	-	-	-
Plateau	30	11	-	-	-	-	-	-	-	-
Rivers	16	9	-	2	2	-	-	-	-	-
Sokoto	7	3	-	-	-	-	-	-	-	-
Taraba	20	10	-	-	-	-	-	-	-	-
Yobe	4	3	-	-	-	-	-	-	-	-
Zamfara	12	6	-	-	-	-	-	-	-	-
<b>TOTAL</b>	<b>900</b>	<b>390 (50.4%)</b>	<b>2 (0.3%)</b>	<b>4 (0.4%)</b>	<b>4 (0.5%)</b>	<b>0 (0.0%)</b>	<b>2 (0.2%)</b>	<b>2 (0.2%)</b>	<b>0(0.0%)</b>	<b>0 (0.0%)</b>

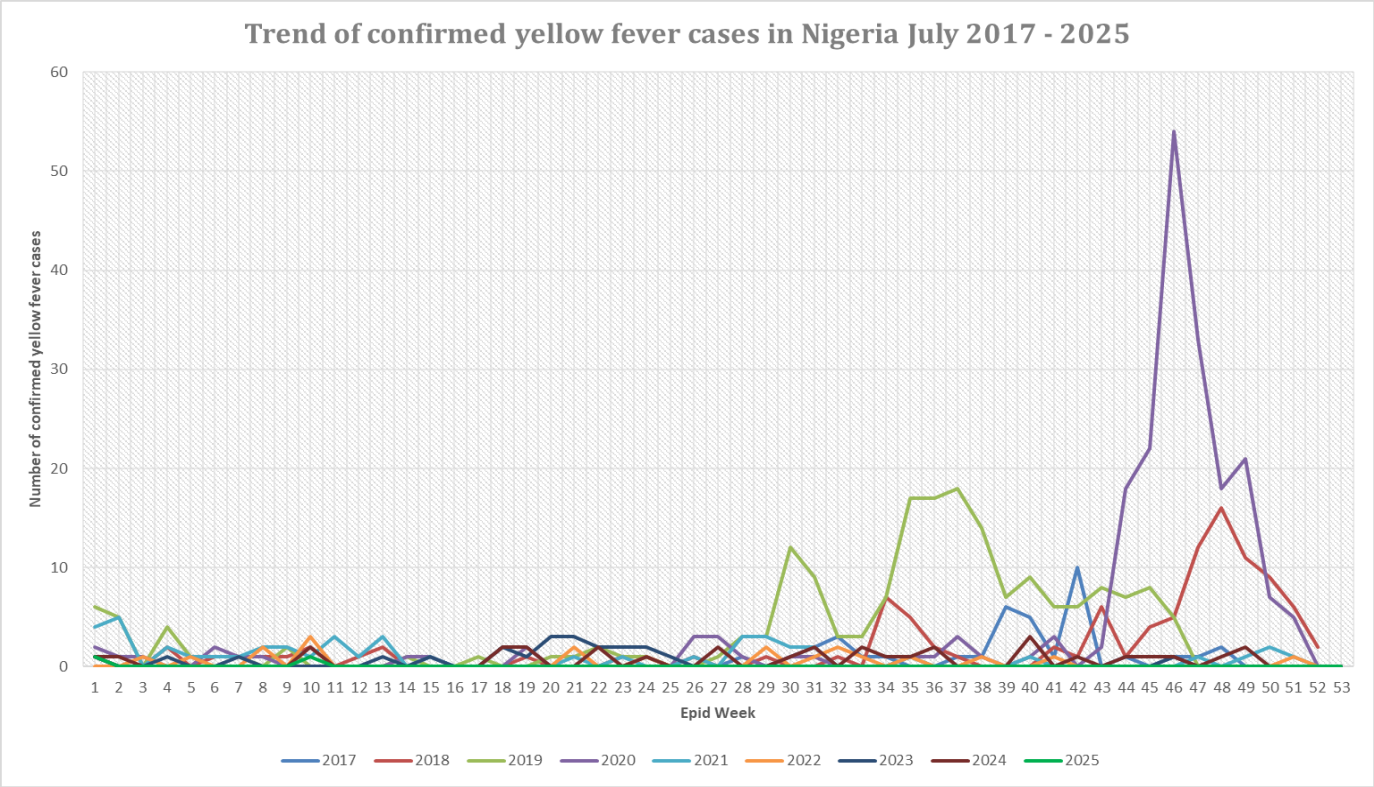


**Figure 1: Map of Nigeria showing yellow fever outbreak attack rates in affected LGAs for April 2025**

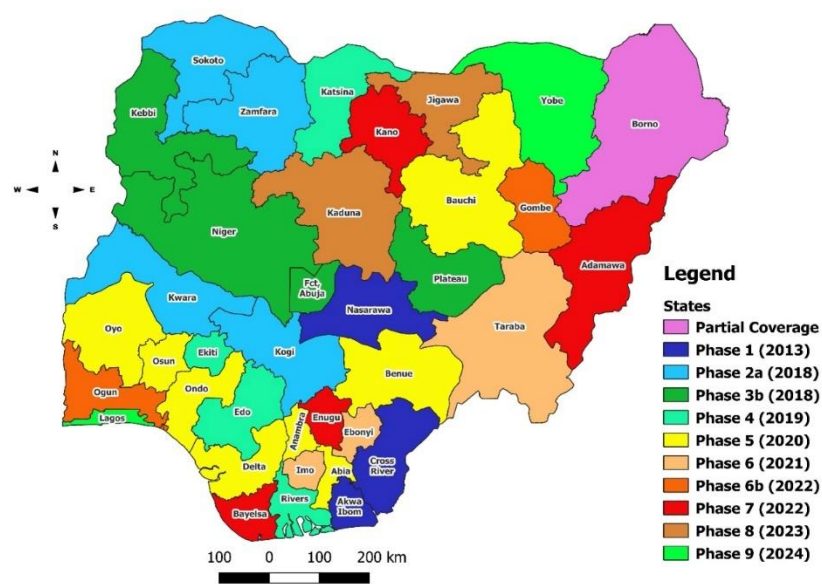


**Figure 2: Epicurve of yellow fever cases in Nigeria from 1<sup>st</sup> January – 30<sup>th</sup> April 2025**

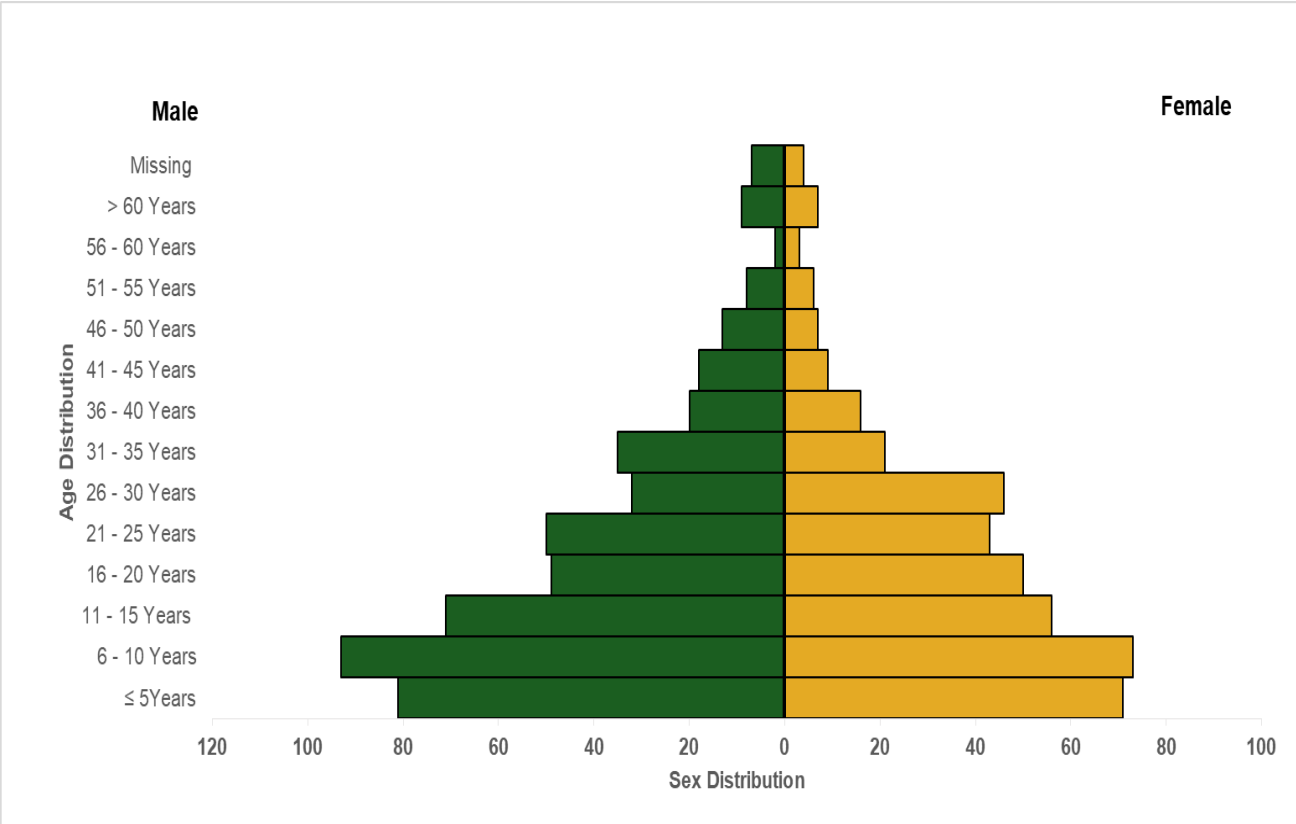




**Figure 3: Trend of confirmed yellow fever cases in Nigeria from 2017 – April 2025**



**Figure 4: Map of Nigeria showing states and years of implementation of yellow fever preventive mass vaccination campaigns (PMVC) from 2013 – 2025**



**Figure 5: Age and sex distribution of yellow fever cases in Nigeria from 1<sup>st</sup> January – 30<sup>th</sup> April 2025**

## Partners



**USAID**  
FROM THE AMERICAN PEOPLE



**Breakthrough  
ACTION**  
FOR SOCIAL & BEHAVIOR CHANGE

