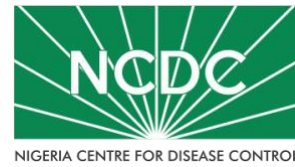


COVID-19 SITUATION REPORT

SITUATION REPORT 151

Tuesday, 28th July 2020



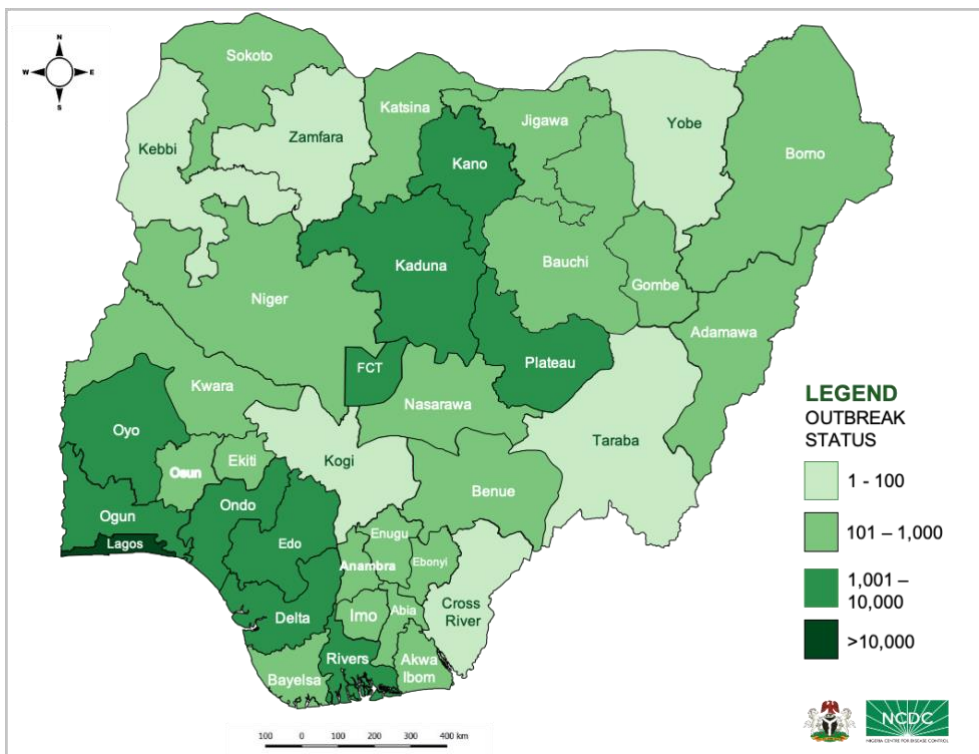
DATA AS REPORTED AND ACCURATE BY NCDC AS AT MIDNIGHT 28TH JULY 2020

HIGHLIGHTS

- Six hundred and twenty-four (**624**) confirmed cases were reported in the last 24 hours from **18** states – Lagos (212), Oyo (69), Niger (49), Kano (37), Osun (37), FCT (35), Plateau (34), Gombe (33), Edo (28), Enugu (28), Ebonyi (17), Delta (10), Katsina (9), Ogun (8), Rivers (7), Ondo (5), Kaduna (4) and Nasarawa (2).
- Five hundred and sixty-one (**561**) cases were discharged in the last 24 hours in **18** states – Edo (150), Nasarawa (110), Ondo (100), Delta (39), Lagos (25), Kaduna (23), Kano (23), Plateau (23), Ebonyi (16), Ogun (14), FCT (13), Katsina (8), Osun (6), Rivers (4), Bauchi (2), Borno (2), Oyo (2) and Imo (1).
- Eight (**8**) deaths were recorded in the last 24 hours in **four** states – Oyo (3), Delta (2), Edo (2) and Enugu (1).
- All **36** states in Nigeria, and the FCT, have reported a confirmed case.

STATE OF THE NATION

Figure 1: Map of Nigeria showing 36 states and FCT affected by COVID-19



SITUATION UPDATES

Total (New in the last 24 hours)

SAMPLES TESTED

272,748 (4,906)

CONFIRMED CASES

41,804 (624)

AFFECTED STATES INCLUDING FCT

37

DISCHARGED CASES

18,764 (561)

CONFIRMED FATALITIES

868 (8) – 2.1% CFR

DEMOGRAPHICS

MALE – 26,866 (64%)

FEMALE – 14,938 (36%)

MOST AFFECTED AGE GROUP

31 - 40 (25%)

PERSONS OF INTEREST

11,077 (Total)

11,030 (99.6% - Exceeded Follow Up)

PROVENANCE

TRAVEL HISTORY – 719 (2%)

CONTACTS – 11,273 (27%)

UNKNOWN EXPOSURE – 29,812 (71%)

GLOBAL UPDATES

TOTAL NUMBER OF CASES

16,341,920 (650,805 deaths)

COUNTRIES & TERRITORIES AFFECTED*

214

*Excluding the 2 International Conveyance

GENERAL FACT SHEET – DATA AS AT 28TH JULY 2020

Table 1: States with reported laboratory-confirmed COVID-19 cases, recoveries, deaths, samples tested and days since last reported case

| STATES | CONFIRMED CASES | | DISCHARGED CASES | | DEATHS | | TOTAL ACTIVE CASES | SAMPLES TESTED BY STATES | DAYS SINCE LAST REPORTED CASE |
|--------------|-----------------|------------|------------------|------------|------------|----------|--------------------|--------------------------|-------------------------------|
| | TOTAL | NEW | TOTAL | NEW | TOTAL | NEW | | | |
| Lagos | 14,848 | 212 | 2,129 | 25 | 192 | 0 | 12,527 | 72,225 | 0 |
| FCT | 3,560 | 35 | 1,077 | 13 | 41 | 0 | 2,442 | 29,891 | 0 |
| Oyo | 2,668 | 69 | 1,187 | 2 | 27 | 3 | 1,454 | 16,598 | 0 |
| Edo | 2,212 | 28 | 1,584 | 150 | 79 | 2 | 549 | 12,133 | 0 |
| Rivers | 1,691 | 7 | 1,373 | 4 | 52 | 0 | 266 | 8,447 | 0 |
| Kano | 1,566 | 37 | 1,258 | 23 | 53 | 0 | 255 | 29,762 | 0 |
| Delta | 1,483 | 10 | 1,257 | 39 | 42 | 2 | 184 | 7,093 | 0 |
| Kaduna | 1,390 | 4 | 1,076 | 23 | 12 | 0 | 302 | 11,121 | 0 |
| Ogun | 1,326 | 8 | 1,068 | 14 | 23 | 0 | 235 | 8,017 | 0 |
| Ondo | 1,108 | 5 | 548 | 100 | 22 | 0 | 538 | 4,516 | 0 |
| Plateau | 1,016 | 34 | 469 | 23 | 19 | 0 | 528 | 10,865 | 0 |
| Ebonyi | 776 | 17 | 596 | 16 | 24 | 0 | 156 | 4,367 | 0 |
| Enugu | 769 | 28 | 425 | 0 | 18 | 1 | 326 | 1,790 | 0 |
| Kwara | 749 | 0 | 211 | 0 | 16 | 0 | 522 | 3,039 | 1 |
| Katsina | 742 | 9 | 457 | 8 | 23 | 0 | 262 | 7,112 | 0 |
| Borno | 612 | 0 | 561 | 2 | 35 | 0 | 16 | 8,254 | 1 |
| Gombe | 607 | 33 | 521 | 0 | 23 | 0 | 63 | 7,991 | 0 |
| Abia | 545 | 0 | 426 | 0 | 5 | 0 | 114 | 1,728 | 3 |
| Bauchi | 539 | 0 | 518 | 2 | 13 | 0 | 8 | 5,517 | 1 |
| Osun | 500 | 37 | 220 | 6 | 11 | 0 | 269 | 2,287 | 0 |
| Imo | 466 | 0 | 117 | 1 | 9 | 0 | 340 | 2,588 | 4 |
| Benue | 346 | 0 | 58 | 0 | 6 | 0 | 282 | 1,989 | 1 |
| Bayelsa | 327 | 0 | 264 | 0 | 21 | 0 | 42 | 893 | 2 |
| Jigawa | 322 | 0 | 308 | 0 | 11 | 0 | 3 | 2,823 | 12 |
| Nasarawa | 310 | 2 | 223 | 110 | 8 | 0 | 79 | 2,195 | 0 |
| Niger | 223 | 49 | 133 | 0 | 12 | 0 | 78 | 1,418 | 0 |
| Akwa Ibom | 221 | 0 | 121 | 0 | 7 | 0 | 93 | 1,291 | 2 |
| Sokoto | 154 | 0 | 137 | 0 | 16 | 0 | 1 | 972 | 3 |
| Adamawa | 140 | 0 | 85 | 0 | 9 | 0 | 46 | 1,316 | 3 |
| Anambra | 132 | 0 | 75 | 0 | 12 | 0 | 45 | 688 | 8 |
| Ekiti | 124 | 0 | 55 | 0 | 2 | 0 | 67 | 1,670 | 1 |
| Kebbi | 90 | 0 | 79 | 0 | 7 | 0 | 4 | 792 | 7 |
| Zamfara | 77 | 0 | 71 | 0 | 5 | 0 | 1 | 319 | 10 |
| Yobe | 66 | 0 | 54 | 0 | 8 | 0 | 4 | 195 | 3 |
| Taraba | 54 | 0 | 11 | 0 | 0 | 0 | 43 | 499 | 7 |
| Cross River | 40 | 0 | 9 | 0 | 3 | 0 | 28 | 250 | 2 |
| Kogi | 5 | 0 | 3 | 0 | 2 | 0 | 0 | 97 | 25 |
| Total | 41,804 | 624 | 18,764 | 561 | 868 | 8 | 22,172 | 272,748 | |

States, including FCT, are arranged in descending order by number of total confirmed cases and then alphabetical order

SELECTED CHARTS

Figure 2: Daily Epidemic Curve of Confirmed Cases (WK9 – WK31)

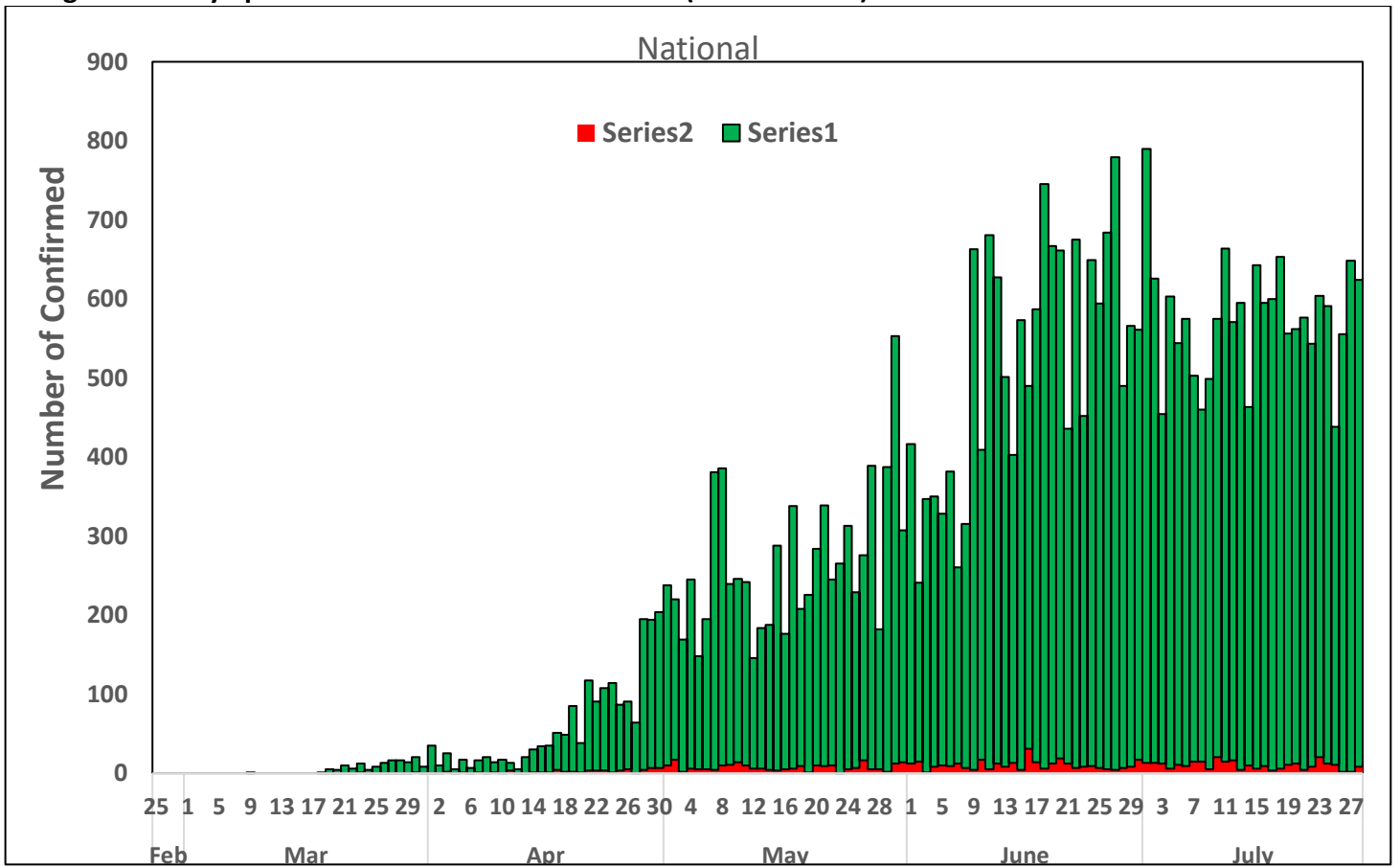
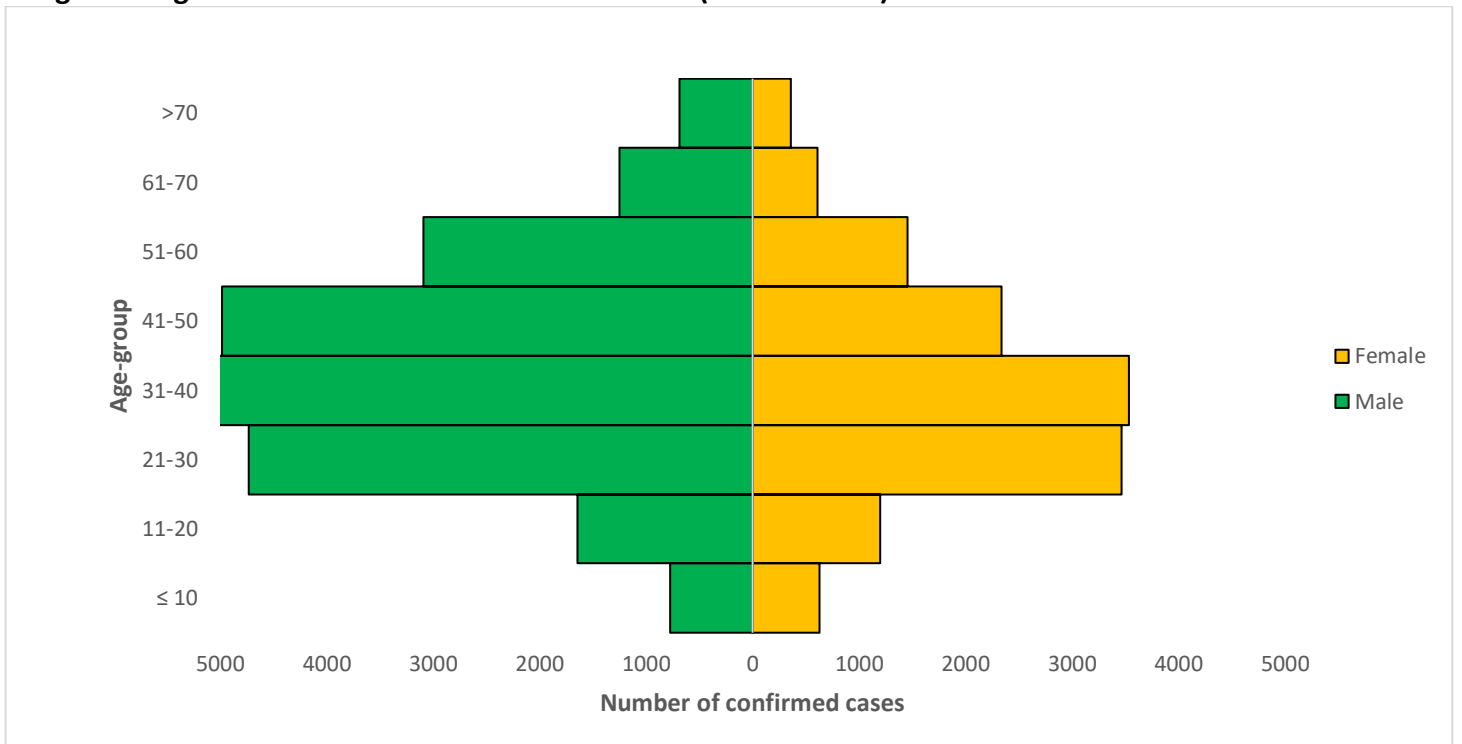


Figure 3: Age-Sex Distribution of Confirmed Cases (WK9 – WK31)



PREPAREDNESS

Since the confirmation of the first case on 27th February 2020, the NCDC has released advisories and statements to help Nigerians and affected groups in particular to respond to the pandemic

- NCDC has launched an online course on [Infection, Prevention and Control \(IPC\) for COVID-19](#) NCDC eLearning platform
- Ahead of forthcoming elections in the country, NCDC has issued [Guidelines for Conducting Elections During the COVID-19 Outbreak in Nigeria](#).
- To protect our elders, and those with pre-existing medical conditions, NCDC has issued an [Advisory for Vulnerable Groups](#).
- NCDC has released [guidelines on the re-opening of places for worship](#).
- NCDC has released [Strategies to Improve Surveillance for COVID-19 Guidance for States](#)
- The Nigeria Police Force has released COVID-19 operational guidelines for the [Police and other Law Enforcement Agencies](#) in Nigeria
- Guidelines have been issued for the [safe transportation of remains of persons suspected or confirmed to have died of COVID-19](#)
- Information on diagnostics of the COVID-19 virus can be found in our [detailed FAQ document](#).
- To increase our testing capacity, NCDC has issued guidelines for the [integration of private labs](#).
- Guidelines for [businesses and employers](#) have been updated.
- NCDC has updated its [case definition](#) , [community case definition](#) and [case management guide](#).
- NCDC releases periodic [public health advisories](#) to Nigerians on the COVID-19 disease.
- To adhere to post-lockdown measures, NCDC has released an [advisory on the use of face masks](#), as well as information on the [Use of Cloth face masks](#) and [how to make your cloth face masks](#).
- NCDC has released guidelines for the [management of pregnant women and nursing mothers](#) during the pandemic.
- To address burials of loved ones who die from COVID-19, guidelines have been issued to advise on the [management of dead bodies](#).
- For health centres managing cases, the following documents have been released- a guideline for the [Rational Use of Personal Protective Equipment in the care of COVID-19 cases](#).
- As part of plans to increase the testing capacity of the country, the NCDC published a [National Strategy to Scale Up Access to Coronavirus Disease Testing in Nigeria](#) document.
- The Presidential Task Force has published policies and announcements on COVID-19 [available on the website of the Presidency](#) – including presidential addresses, task force updates and information on livelihood and economic support.

RESPONSE

On 28th February 2020, a multi-sectoral Emergency Operations Centre (EOC) was activated at Level 3 – the highest emergency level in Nigeria –led by NCDC in close coordination with the State Public Health EOCs (PHEOC).

- **Disseminated the surveillance strategy guidance for states and management of loss to follow up**
- **Optimised and operationalised molecular and GeneXpert laboratories at the University of Nigeria Teaching Hospital Enugu State**
- **Conducted facility level Infection Prevention and Control (IPC) supervision in high burden LGAs in Lagos (Eti-Osa, Mushin LGAs) and provided refresher training sessions to personnel**
- **Finalised plan for distribution of additional response materials and commodities to the South-West states**
- Received a total of 117 Persons of Interest (POI)/returnees from Ghana (37) on the 25th July and France (67), USA (5) and Turkey (8) on the 26th July 2020
- All POIs/returnees were received, screened and given the travellers kit on arrival at the Nnamdi Azikiwe International Airport Abuja (NAIA)
- All returnees were issued COVID-19 test appointment

- Trained 15 doctors from General Hospitals (GH), 20 hygienists currently working in the treatment centre and 600 Officers-in-Charge/Community Health Extension Workers (CHEWs) at the primary health care level in Ebonyi State
- Deployed Personal Protective Equipment (PPE), response materials and commodities to the North East states including the treatment centres, Teaching Hospitals and Primary Health care agencies in Gombe, Taraba, Borno, Bauchi, Yobe and Adamawa
- Distributed PPE and commodities to the GeneXpert laboratories in University of Nigeria Teaching Hospital (UNTH) Enugu, University of Abuja Teaching Hospital (UATH), Gwagwalada, FCT and University of Calabar Teaching Hospital (UCTH) Cross River
- Supported Universal Basic Education Commission to review the draft handbook on COVID 19 prevention in schools
- All education materials can be found via www.covid19.ncdc.gov.ng